

REGIONAL MOBILITY POLICY UPDATE: POTENTIAL MOBILITY POLICY ELEMENTS AND MOST PROMISING MEASURES

Date: March 31, 2021

Department: Planning and Development

Meeting Date: April 13, 2021

Prepared by:

Kim Ellis, kim.ellis@oregonmetro.gov

Presenters: Margi Bradway, Deputy Director and Kim Ellis, Project Manager

Length: 45 minutes

ISSUE STATEMENT

Metro and the Oregon Department of Transportation (ODOT) are working together to update the policy on how we define and measure mobility in the Portland region in the Oregon Highway Plan (OHP), Regional Transportation Plan (RTP), local transportation system plans (TSPs) and corridor plans, and during the local comprehensive plan amendment process.

The current 20-year old mobility policy is contained in both the 2018 [Regional Transportation Plan](#) (RTP) and Policy 1F (Highway Mobility Policy) of the [Oregon Highway Plan](#) (OHP). The policy relies on a vehicle-based measure of mobility (and thresholds) to evaluate current and future performance of the motor vehicle network during peak travel periods. The measure, also known as the v/c ratio, is the ratio of motor vehicle volume to motor vehicle capacity of a given roadway.

The 2018 RTP failed to meet state requirements for demonstrating consistency with the OHP Highway Mobility Policy (Policy 1F) under the current mobility targets for the region. As a result, ODOT agreed to work with Metro to update the mobility policy for the Portland metropolitan area in both the 2018 RTP and OHP Policy 1F.

The 2018 RTP is built around four key priorities of advancing equity, mitigating climate change, improving safety and managing congestion. The plan recognizes that our growing and changing region needs an updated mobility policy to better align how we measure the performance and adequacy of the transportation system for both people and goods to serve planned land uses. The comprehensive set of shared regional values, goals and related desired outcomes identified in the RTP and 2040 Growth Concept, as well as local and state goals will guide to this update.

What is the Regional Mobility Policy?

State, regional and local transportation plans have many policies; the mobility policy is just one of them.

Last updated in 2000, the region's mobility policy relies on a vehicle-based measure of mobility and thresholds adopted in the Regional Transportation Plan (RTP) and Policy 1F of Oregon Highway Plan (OHP). The measure is referred to as the volume-to-capacity ratio (v/c ratio).

In the past, people often thought of mobility as our system of roads and how we use them—the way traffic flows throughout the day. And, historically, planners and engineers have evaluated performance of transportation systems using the v/c measure for these purposes:

- System planning for the future*
- Evaluating impacts of local comprehensive plan amendments*
- Mitigating development impacts
- Managing and designing roads

That is limiting for a growing region and transportation system that is far more complex. An improved mobility policy should consider and balance mobility for people riding a bus or train, biking, walking or moving goods. It should consider why, where, and when people need to travel, how long it takes to reach a destination, how reliable the trip is and if the system is safe for all users.

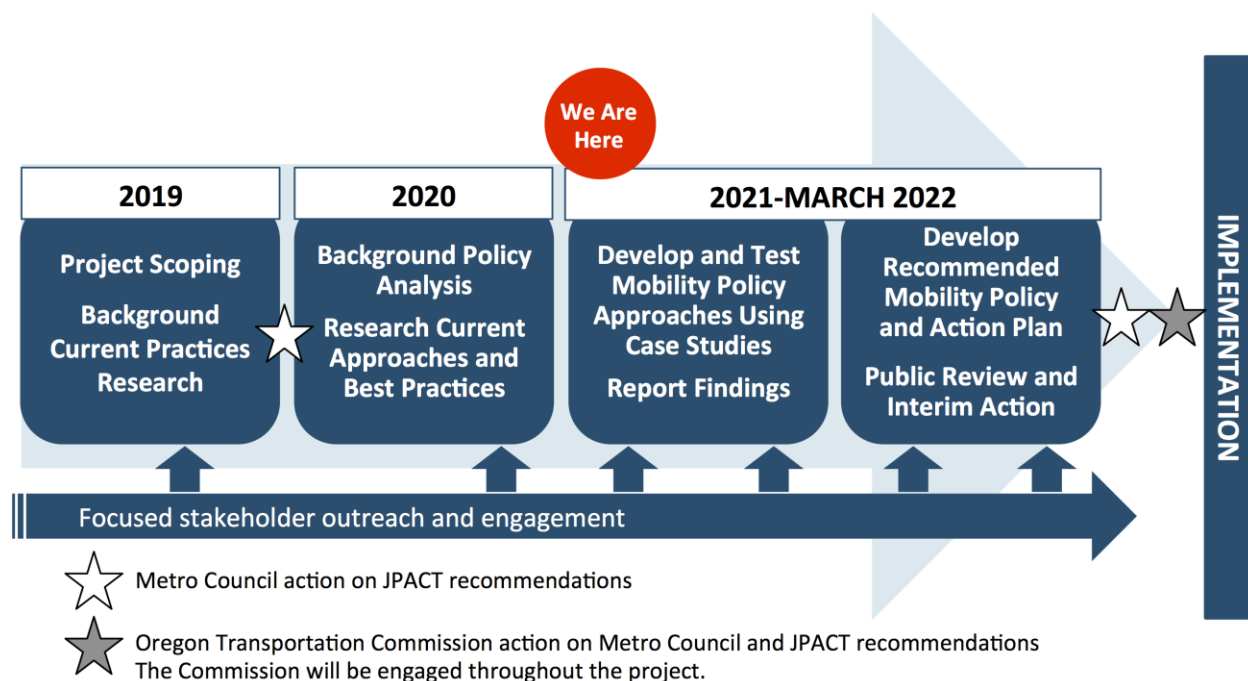
* The focus of this update.

REGIONAL MOBILITY POLICY UPDATE: POTENTIAL MOBILITY POLICY ELEMENTS AND MOST PROMISING MEASURES

Project timeline

Shown in **Figure 1**, the Regional Mobility Policy update began in 2019 and will be completed March 2022.

Figure 1. Project Timeline



A summary of activities and products completed to date follows.

2019 Activities and Products

From April to Dec. 2019, Metro and ODOT worked closely together and with local, regional and state partners to scope the project, seeking feedback on the project objectives and proposed approach. JPACT and the Metro Council approved the project work plan and engagement plan for this effort in November and December 2019, respectively.

A [Scoping Summary factsheet](#) describing the process and key themes from stakeholder feedback and a [Stakeholder Interviews Report](#) posted on the project website at: oregonmetro.gov/mobility.

Overall, there is broad support and enthusiasm for an updated policy that accounts for all modes of travel and a broader array of outcomes beyond the level of vehicle congestion. Stakeholders also broadly supported the project objectives and the need for an updated policy. See **Attachment 1** for the project objectives adopted in the work plan by JPACT and the Metro Council in 2019.

REGIONAL MOBILITY POLICY UPDATE: POTENTIAL MOBILITY POLICY ELEMENTS AND MOST PROMISING MEASURES

2020 Activities and Products

Several activities were completed in 2020 that will serve as foundational resources for the remainder of the project:

- **Consultant Selection Process.** From January to July, Metro and ODOT finalized an Intergovernmental Agreement (IGA) and completed the consultant selection process. Led by Kittelson and Associates, the selected consultant team also includes land use and transportation planners, engineers, attorneys and engagement specialists from several firms, including Fehr and Peers, Angelo Planning Group, Equitable Cities LLC, Bateman Seidel and JLA Public Involvement.
- **[Portland State University's Synthesis Research on Current Measures and Tools.](#)** From late Fall 2019 to June 2020, the Transportation Research and Education Center (TREC)/Portland State University documented current mobility-related performance measures and methods being used in the Portland region, statewide and nationally. The report reviews the existing mobility policy and summarizes current practices in measuring multimodal mobility. Intended to serve as a starting point, key findings from this work include:
 - There is no single definition of mobility throughout the transportation industry. The definition of mobility and the types of measures, methods and thresholds chosen will have significant impacts on the outcomes.
 - A variety of measures and methods are available to consider that are already used locally, regionally and by ODOT; no single measure emerged that could clearly apply to all applications (i.e., system planning, plan amendments, development review, roadway design and management/operations).
 - There is a need to consider measures that can show progress toward multiple RTP goals, including transportation equity, safety, climate leadership, accessibility, system completeness, and reliability.
 - Methods and thresholds should be well-documented and based on substantial evidence (i.e., academic/scientific research).
 - Existing data and tools cannot account for all the things we want to account for – particularly pedestrian travel and transportation demand management. The updated policy, measures and methods will drive future data collection and analysis tool development/refinement.
 - It is important that legal, planning, development review and engineering practitioners be engaged throughout the process and especially around how the policy gets implemented.
- **[ODOT Oregon Highway Plan Mobility Policy White Paper.](#)** The Oregon Transportation Commission (OTC) will be updating the Oregon Transportation Plan and Oregon Highway Plan during the next couple of years and will conduct its own statewide stakeholder engagement process to inform those plan updates. This project provides an opportunity for coordination and for the region to help inform those efforts. In August 2020, ODOT prepared a complementary white paper documenting the history and current use of the mobility policy statewide as well as considerations and potential approaches for updating the policy. The white paper includes a summary of

REGIONAL MOBILITY POLICY UPDATE: POTENTIAL MOBILITY POLICY ELEMENTS AND MOST PROMISING MEASURES

stakeholder interviews. A factsheet summarizing [key findings from the white paper](#) is provided in **Attachment 2**.

- Research on Examples of Current Approaches in the Portland Area.** Since the 1990's, the current regional mobility policy has guided how streets and highways are planned for and managed in communities in the greater Portland area. The project team worked with individual cities and counties and county coordinating committees technical advisory committees (TACs) to identify and document examples of how the current mobility policy has been applied in the Portland region – in transportation system plans (TSPs), a corridor plan, several comprehensive plan amendments, local development review proposals with a transportation impact analysis and project design.

Figure 2. Applications of the current mobility policy



The research found the v/c ratio is more strictly applied as we move from system planning to plan amendments to development review to project design. It is a target in system plans and but often used as a standard in the other three applications.

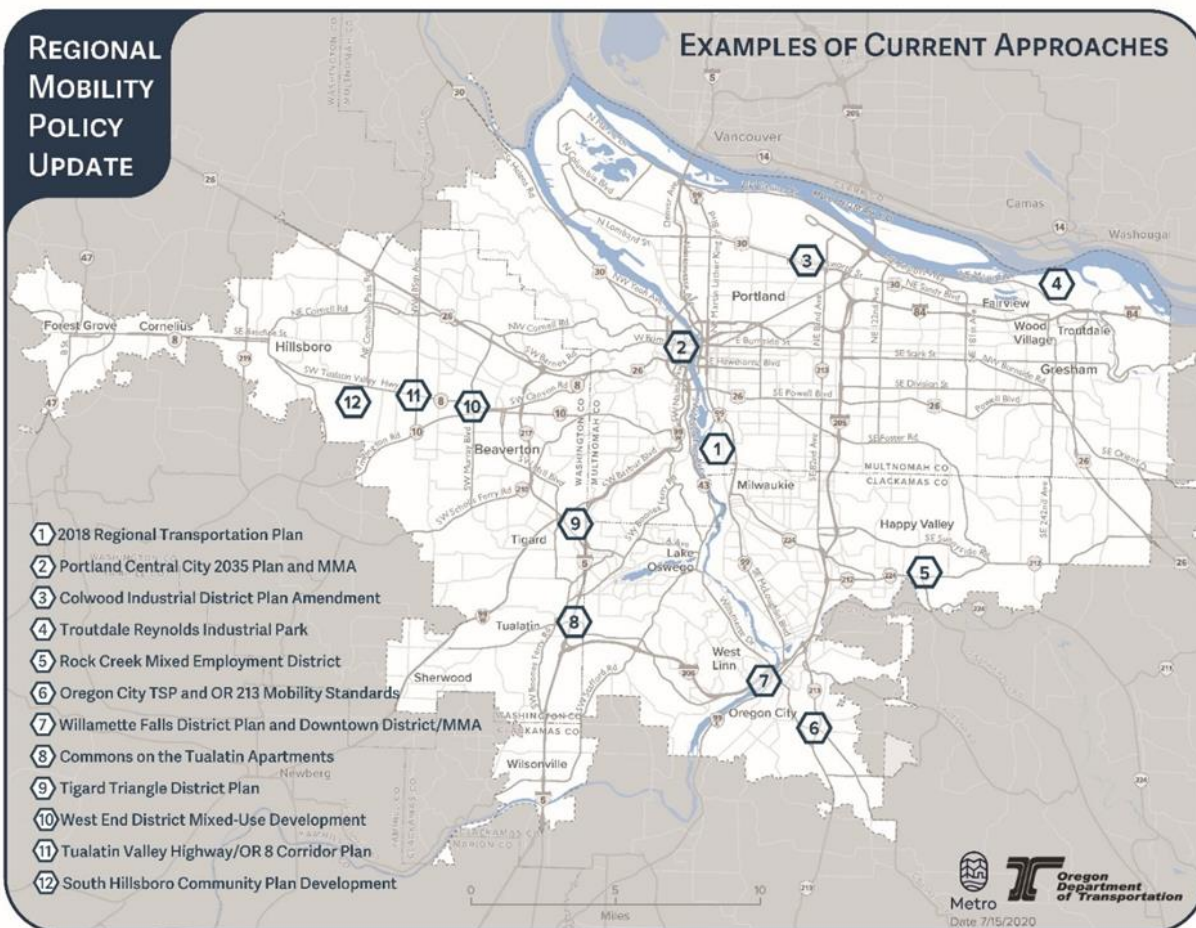


Shown in **Figure 3**, the selected examples cover a range of state and regional transportation facilities (i.e., throughways¹ and state- and locally-owned arterials, including state and regional freight routes and enhanced transit corridors), 2040 land use contexts, geographies and availability of travel options. The research identifies strengths and weaknesses of the current v/c measure and policy as well as opportunities for improvement to be addressed with the updated mobility policy for the Portland area.

¹ Throughways are designated in the 2018 RTP and generally correspond to Expressways designated in the OHP.

REGIONAL MOBILITY POLICY UPDATE: POTENTIAL MOBILITY POLICY ELEMENTS AND MOST PROMISING MEASURES

Figure 3. Locations of Examples of Current Approaches



Key findings from this work include:

Transportation system planning

- The current mobility policy and v/c measures are typically used in combination with other multimodal policies and measures in the development of transportation system plans and are not a barrier to good decision-making in transportation system plans.
- The v/c ratio as the only measure of mobility is not consistent with the current view of mobility being about people and goods, not just motor vehicles. The updated mobility policy and measures need to reflect the many aspects of mobility, including all users' ability to get to the places they want or need to go by a range of modes. Flexibility is needed to apply different approaches in different areas based on land use and transportation contexts and multimodal functions of transportation facilities.

System Planning

Under Oregon's land use program, system planning results in a land use decision that integrates land use and transportation to provide long-range direction on the development of transportation facilities and services for all modes to serve adopted land use plans. System planning includes regional and local transportation system plans, corridor plans, ODOT facility plans and other area plans.

REGIONAL MOBILITY POLICY UPDATE: POTENTIAL MOBILITY POLICY ELEMENTS AND MOST PROMISING MEASURES

- The financially constrained RTP project list developed during system planning serves as the basis for making subsequent plan amendment decisions under the Transportation Planning Rule (Section 0060). Unlike the RTP, local TSPs are not required to include a financially constrained project list, though some jurisdictions choose to do so.
- Metro applies the RTP RMP v/c targets on arterial roadway links during development of the RTP while local governments and ODOT apply the RTP and OHP v/c targets at both the roadway link and intersection levels. The OHP v/c targets are applied to state transportation facilities.

Plan amendments

- ODOT and local agencies would like more multi-modal measures that could be applied to plan amendments.
- Plan amendments should focus more on consistency with an adopted local transportation system plan not just consistency with the mobility policy v/c standard as the primary evaluation method.
- While the TPR provides more flexibility in evaluating plan amendments than is being utilized (Section -0060 references the facility owner' or operators' performance standards), many local governments evaluate transportation impacts of plan amendments using the OHP v/c standard because it constitutes the best known, most easily used and widely accepted measure.
- The OHP Policy 1F Table 7 mobility policy v/c thresholds are applied as standards to determine whether the plan amendment has a significant effect on state transportation facilities.
- There are a variety of mitigation options available (provided in Section -0060) to help meet the mobility policy when the OHP Table 7 v/c standard cannot be met on state transportation facilities, including safety improvements, multimodal improvements, and transportation system and demand management actions. However, the process of agreeing on methods and assumptions in pursuing these options can be time-consuming and costly.
- The v/c target used during system planning is often not met in many locations in financially constrained TSPs. This makes it difficult for subsequent plan amendments to meet the adopted mobility standard.
- In effect, the OHP v/c standard has more importance in plan amendments than during system planning.

Plan Amendments

Under Oregon's land use program, plan amendments are city or county land use decisions that change a comprehensive plan or zoning text or map within their boundary. Plan amendments must comply with the Oregon Transportation Planning Rule (Section -0060). This means a jurisdiction must determine if there are any significant impacts to planned transportation facilities and if so, mitigate those impacts.

The series of individual factsheets are being finalized and will be published on the [project website](#) in April. The examples will provide a starting point for testing potential measures and updated policy approaches this summer through 4 to 6 case studies.

REGIONAL MOBILITY POLICY UPDATE: POTENTIAL MOBILITY POLICY ELEMENTS AND MOST PROMISING MEASURES

- **Research on State and Regional Policy Framework and Past Stakeholder Input on Mobility Shape Key Policy Elements and Potential Measures to Consider for Testing.** The project team reviewed existing state and regional policy documents and [past stakeholder input](#) from the 2018 Regional Transportation Plan update, development of the Get Moving 2020 funding measure and the [Scoping Engagement Process](#) for this effort.

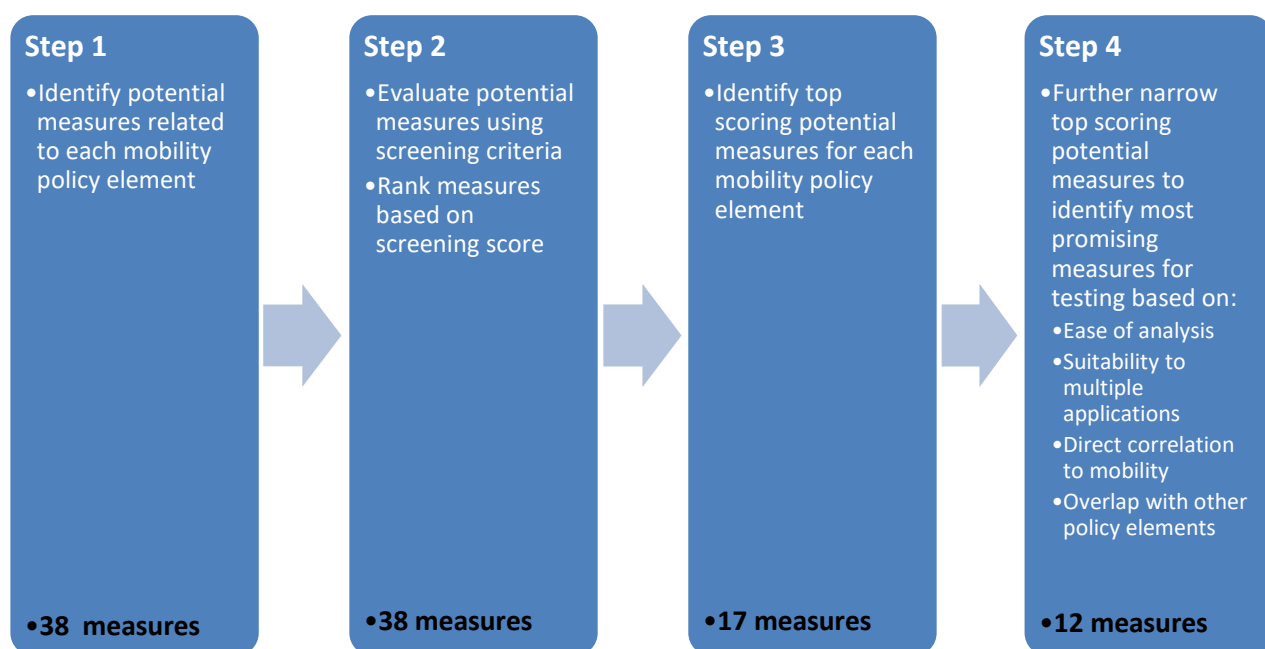
Based on this review and subsequent feedback received through two workshops with the Transportation Policy Alternatives Committee (TPAC) and Metro Technical Advisory Committee (MTAC) in fall 2020, five key transportation outcomes were identified as integral to how we view mobility in the Portland region:

Potential Mobility Policy Elements

- **Access** – All people and goods can get where they need to go.
- **Time Efficiency** – People and goods can get where they need to go in a reasonable amount of time.
- **Reliability** – Travel time is reliable or predictable for all modes.
- **Safety** – Available travel options are safe for all users.
- **Travel Options** – People can get where they need to go by a variety of travel options or modes.

TPAC and MTAC also provided feedback on criteria to be used to screen and select potential mobility performance measures for testing that address one or more mobility policy elements. Since January 2021, the Consultant team applied the criteria through a four-step process (shown in **Figure 4**) to narrow a list of 38 potential mobility measures to 12 potential mobility measures that appear most promising for testing through case studies this summer.

Figure 4: Screening Process to Inform Selection of Potential Mobility Measures for Testing



REGIONAL MOBILITY POLICY UPDATE: POTENTIAL MOBILITY POLICY ELEMENTS AND MOST PROMISING MEASURES

At this work session, staff will seek Metro Council initial feedback and direction on the potential policy elements and most promising measures these outcomes. **Attachment 3** summarizes the potential mobility policy elements and most promising measures for testing.

As shown in **Attachment 4**, throughout April and May, Metro and ODOT will engage regional advisory committees (JPACT and the Metro Policy Advisory Committee), county coordinating committees (staff and policy-levels), and other stakeholders to seek feedback on the key policy elements and most promising measures identified to date.

ACTION REQUESTED

Staff seeks Metro Council discussion and feedback on the key policy elements and most promising measures identified to date.

IDENTIFIED POLICY OUTCOMES

As directed by the 2018 RTP, this project will update the 20-year old “interim” mobility policy that is used to define and measure mobility in regional and local transportation system plans (TSPs), corridor plans, and during the plan amendment process in the Portland area. The project will develop a holistic alternative mobility policy and associated measures, targets, and methods for the Portland region. The project will advance the RTP policy goals for addressing equity, climate, safety and congestion as well as support other state, regional and local policy objectives, including implementation of the 2040 Growth Concept and the region’s Climate Smart Strategy.

In addition, this project will develop guidance to jurisdictions on how to balance multiple policy objectives and document adequacy, i.e. consistency with the RTP and OHP, in both transportation system plans (TSPs) and plan amendments, when there are multiple measures and targets in place. Finally, the project will recommend considerations for future local, regional and state actions outside the scope of this project to implement the new policy and to reconcile differences between the new TSP and plan amendment measures and targets and those used in development review and project design processes.

POLICY QUESTIONS

1. Thinking about the different ways that people travel and goods move in our region, are the elements identified the most important elements of mobility to include in an updated state and regional mobility policy for the Portland region?
2. Does the Council have initial feedback on the most promising performance measures being considered for testing through case studies?

POLICY OPTIONS FOR COUNCIL TO CONSIDER

Policy options for Council to consider include:

- **Option 1: Council supports the key policy elements and most promising measures**, as presented.
- **Option 2: Council provides feedback and direction to staff**, if the key policy elements and potential ways to measure them do not fully reflect Council’s desired mobility outcomes.

REGIONAL MOBILITY POLICY UPDATE: POTENTIAL MOBILITY POLICY ELEMENTS AND MOST PROMISING MEASURES

STAFF RECOMMENDATIONS

Staff recommends that Council discuss and provide feedback on the key policy elements to include in the updated policy and most promising measures being considered for testing, pending feedback gathered during stakeholder engagement activities planned for April and May.

Together, the technical screening process and stakeholder input will help shape staff's recommendation to JPACT and Council on the key policy elements and measures recommended for testing through case studies. In June, staff will report back on stakeholder feedback received and seek JPACT and Council direction on the key policy elements and measures to be recommended for testing through case studies.

In summer, 2021, the project team will test the potential measures through case studies. In Fall 2021, staff will report the results of the case studies to stakeholders and decision-makers. Staff will continue to engage TPAC and MTAC in developing an updated regional mobility policy and implementation plan for public review and discussion in early 2022 by JPACT, MPAC, and the Metro Council.

STRATEGIC CONTEXT & FRAMING COUNCIL DISCUSSION

When the mobility policy update was defined and adopted unanimously in Chapter 8 of the 2018 RTP, JPACT and the Metro Council recognized this work must holistically advance the RTP policy goals for addressing equity, climate, safety, and congestion as well as support other state, regional and local policy objectives, including implementation of the 2040 Growth Concept and the region's Climate Smart Strategy. This understanding and direction provided by the Metro Council is reflected in the project work plan and engagement plan adopted by the Metro Council in 2019.

Legal Antecedents

- **Ordinance No. 18-1421** (For the Purpose of Amending the 2014 Regional Transportation Plan to Comply with Federal and State Law and Amending the Regional Framework Plan), adopted December 6, 2018.
- **Resolution No. 20-5086** (For the Purpose of Adopting the Fiscal Year 2020-21 Unified Planning Work Program and Certifying that the Portland Metropolitan Region is in Compliance with Federal Transportation Planning Requirements), adopted May 21, 2020.

Anticipated Effects

This project will recommend amendments to the mobility policy contained in the 2018 RTP and Policy 1F of the OHP for the Portland metropolitan region for consideration by JPACT, the Metro Council and the OTC.

Pending "tentative" approval and direction by the JPACT, the Metro Council and expressed support from the OTC, the updated policy will be applied in the next update to the RTP (due in Dec. 2023). In addition, the recommended policy will be forwarded to the OTC for consideration as an amendment to the OHP 1F (Table 7 and related policies for the state-owned facilities in the Portland region). Pending adoption in the 2023 RTP by JPACT and the Metro Council and amendment of the OHP by the OTC, the updated policy will guide

REGIONAL MOBILITY POLICY UPDATE: POTENTIAL MOBILITY POLICY ELEMENTS AND MOST PROMISING MEASURES

development of regional and local transportation plans and studies, and the evaluation of potential impacts of plan amendments and zoning changes subject to the Transportation Planning Rule.

Financial Implications

This project is accounted for in the 2020-21 budget approved by the Metro Council on June 18, 2020 and the 2020-2021 Unified Planning Work Program (UPWP) approved by the Metro Council on May 21, 2020. The project will rely on a combination of Metro's federal transportation planning grants and ODOT resources per the intergovernmental agreement between Metro and ODOT.

ATTACHMENTS

- Is legislation required for Council action? Not at this time
- What other materials are you presenting today?
 1. Adopted Project Objectives
 2. ODOT Oregon Highway Plan Mobility Policy White Paper
 3. Potential Mobility Policy Elements and Most Promising Performance Measures for Testing
 4. Stakeholder and Public Engagement - Spring 2021