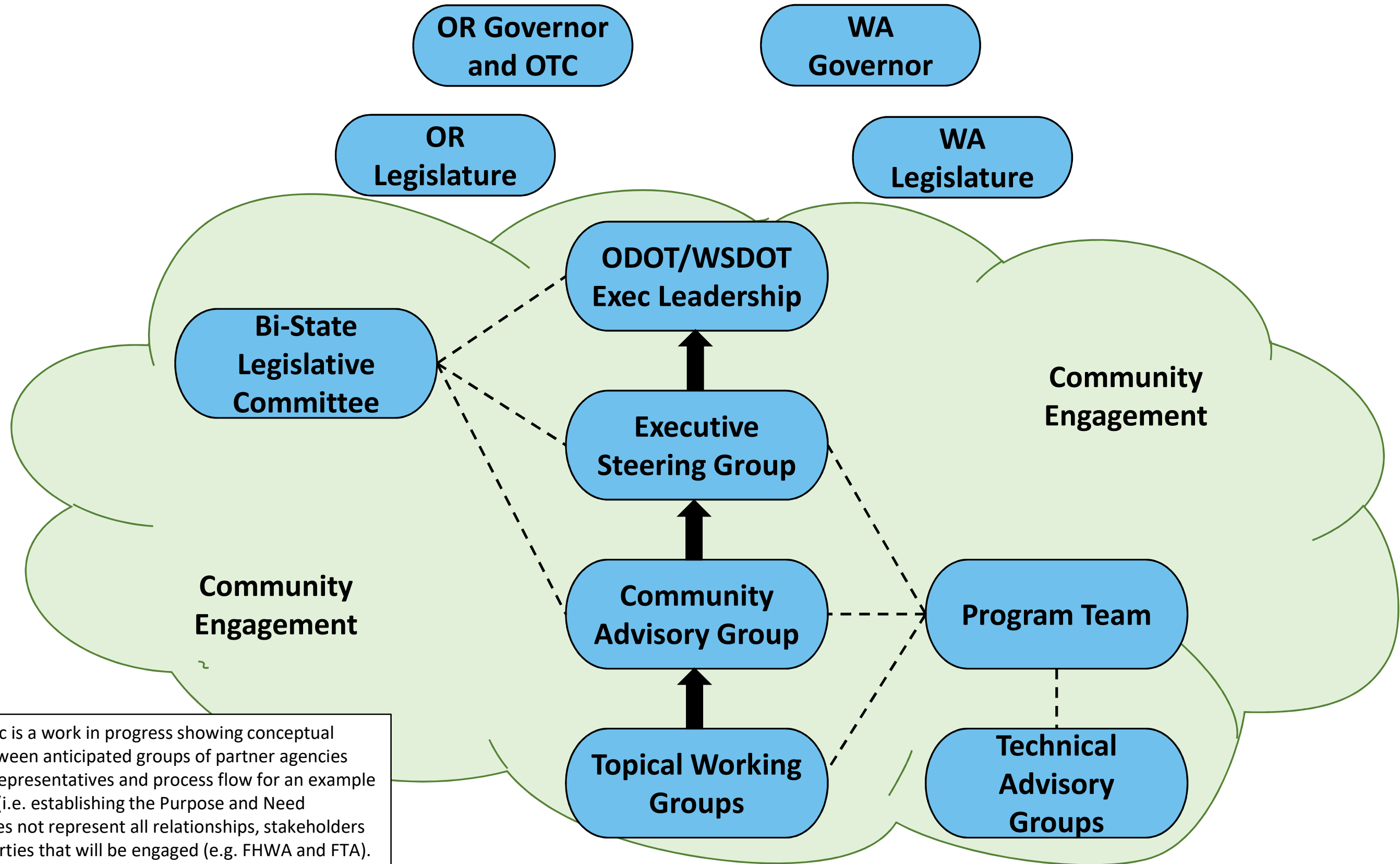


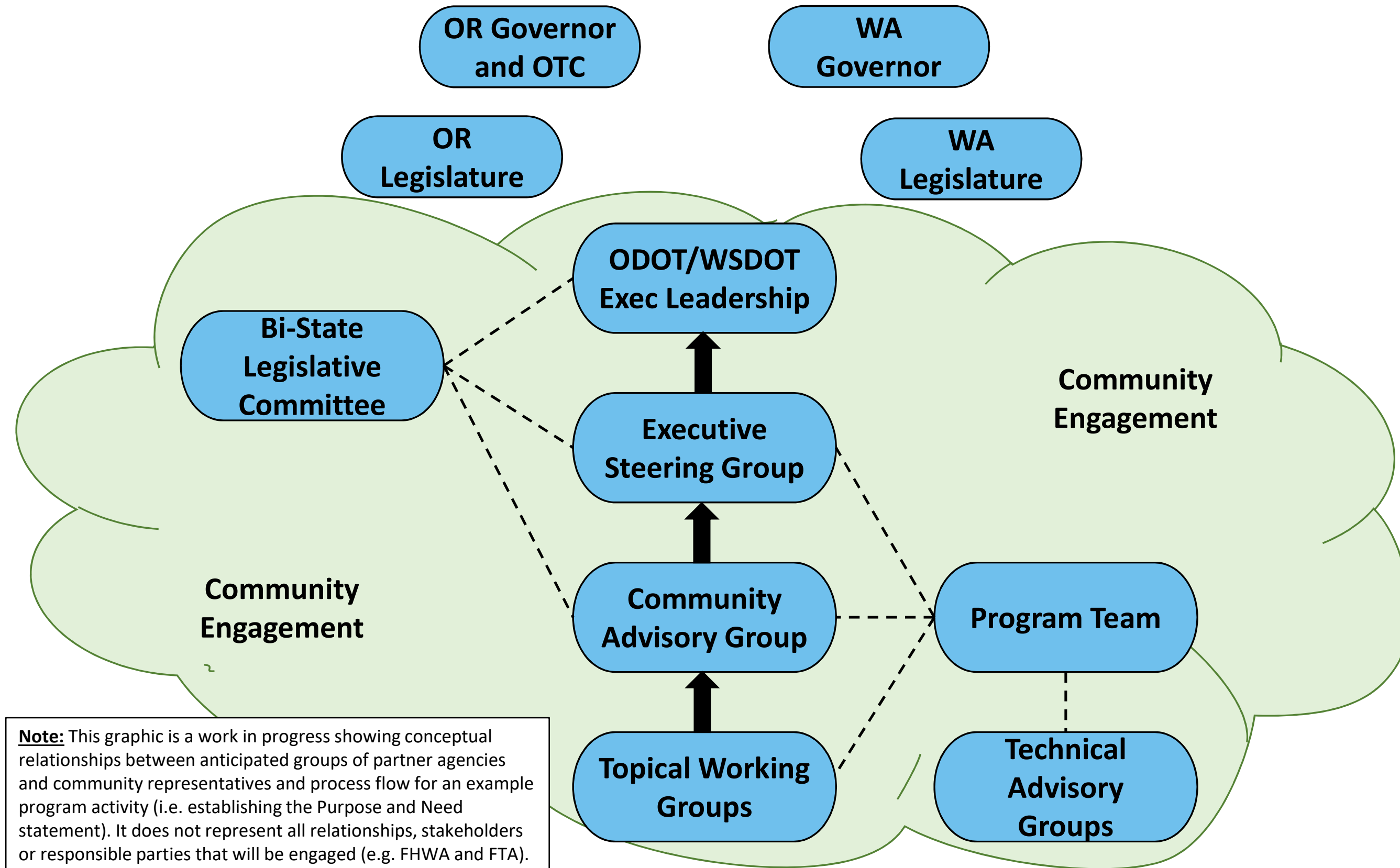
Interstate Bridge Replacement Program

Working Draft Process Diagram – Purpose and Need

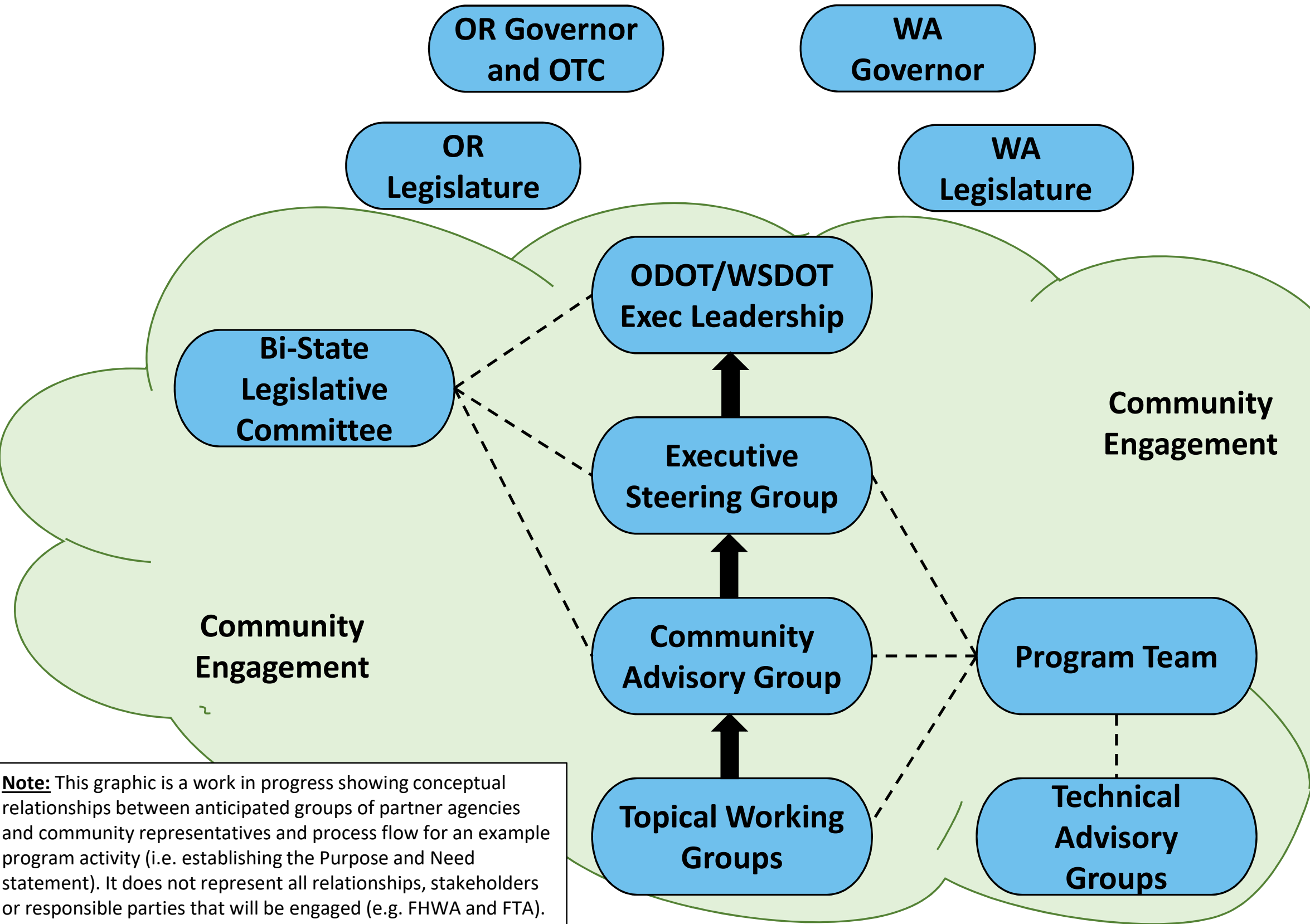


Interstate Bridge Replacement Program

Working Draft Process Diagram – Purpose and Need



Interstate Bridge Replacement Program
Working Draft Process Diagram – Purpose and Need

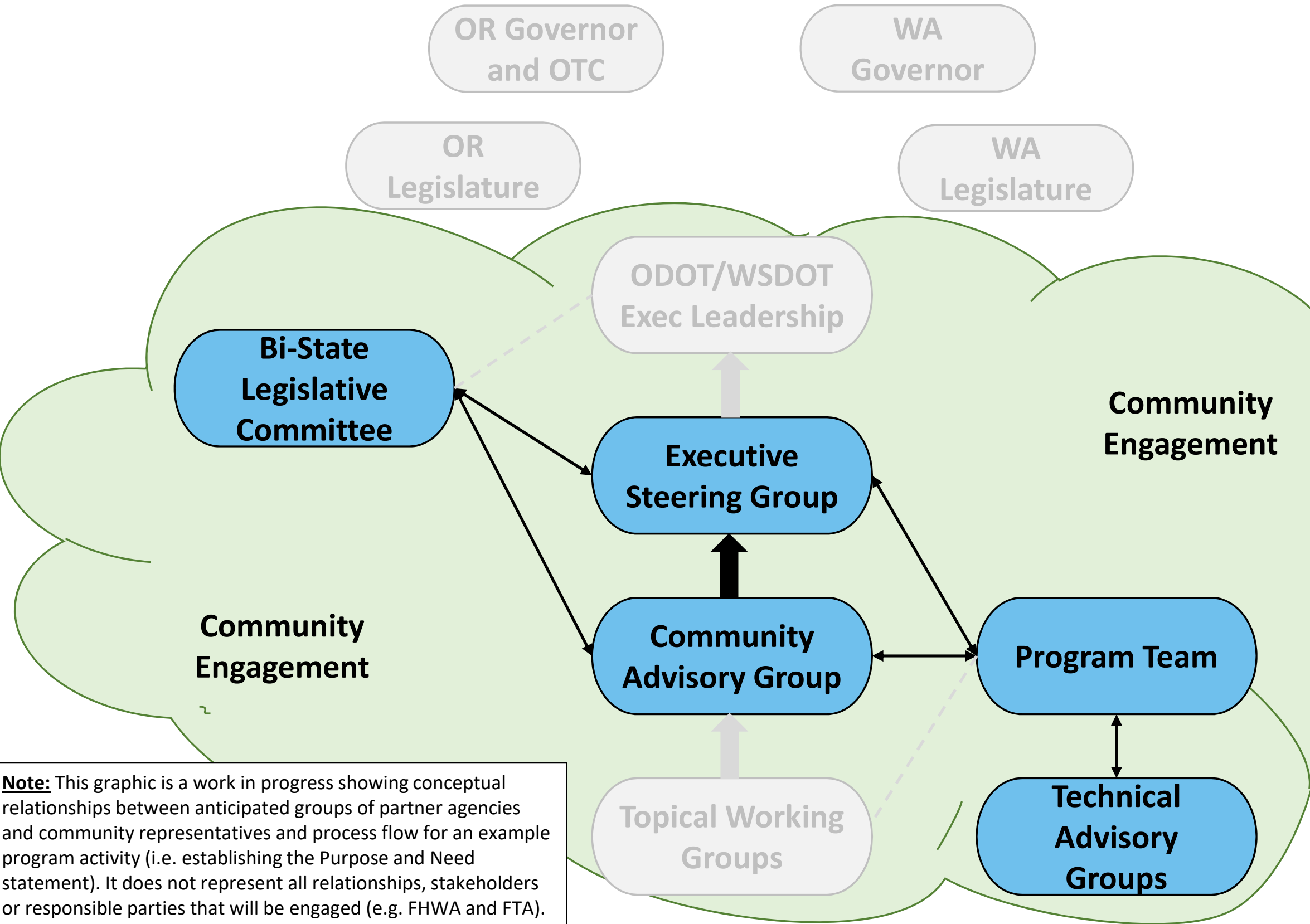


IBR Program Purpose and Need

- Review previous planning efforts
- Develop approach to identify the program purpose and need (P&N)
- Determine if needs have been addressed (other projects/programs)
- Identify new data that is required to draft P&N
- Review new data and determine if there are new problems to address with the P&N
- Develop a DRAFT IBR Purpose and Need
- CAG/Program Team recommend DRAFT P&N to ESG
- ESG provides feedback on DRAFT IBR P&N
- Draft IBR P&N is presented to Bi-State Legislative Committee
- Develop FINAL IBR P&N
- ESG Recommends FINAL IBR Purpose and Need to ODOT/WSDOT

Note: This graphic is a work in progress showing conceptual relationships between anticipated groups of partner agencies and community representatives and process flow for an example program activity (i.e. establishing the Purpose and Need statement). It does not represent all relationships, stakeholders or responsible parties that will be engaged (e.g. FHWA and FTA).

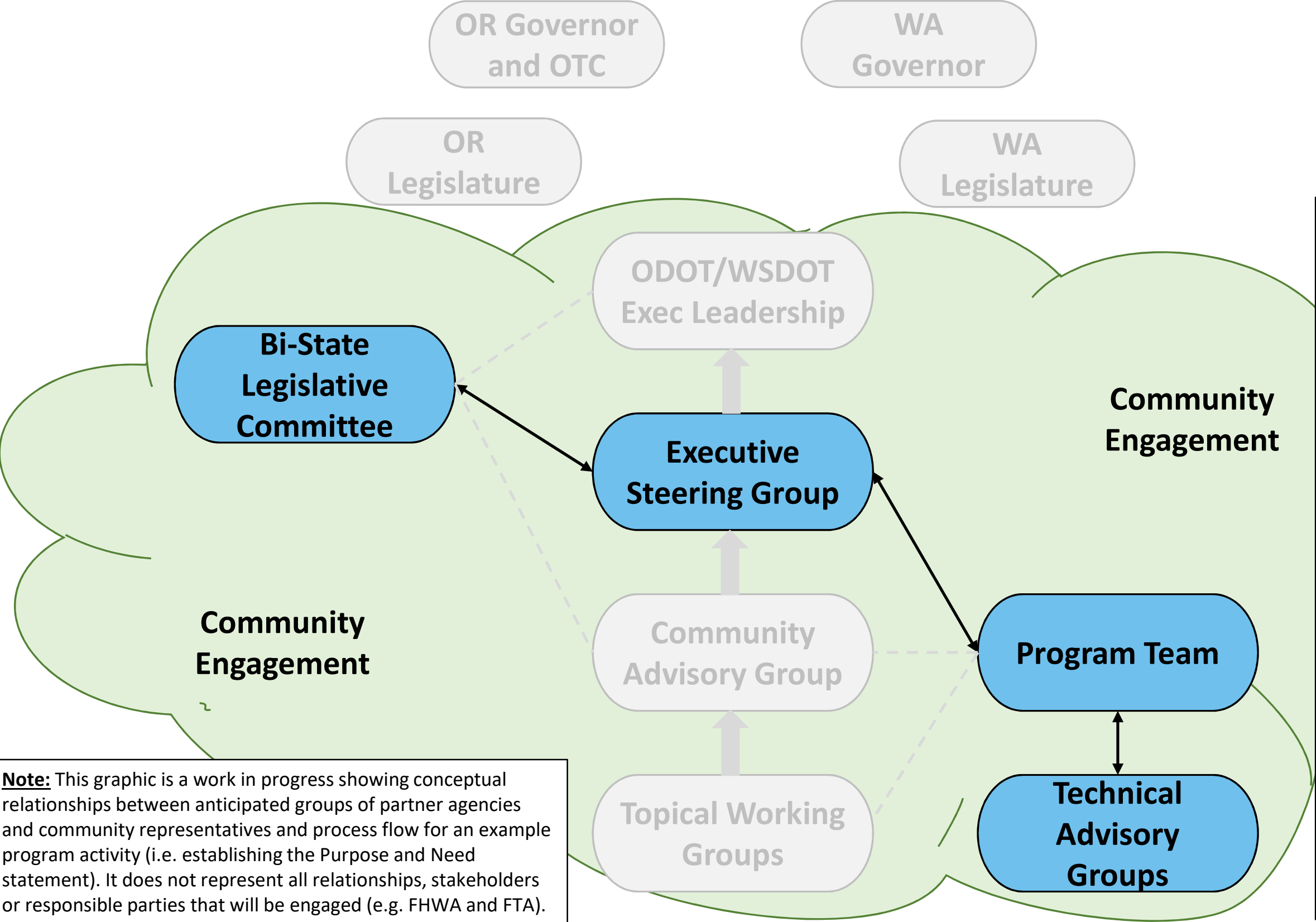
**Interstate Bridge Replacement Program
Working Draft Process Diagram – Purpose and Need**



- IBR Program Purpose and Need**
- **Review previous planning efforts**
 - Develop approach to identify the program purpose and need (P&N)
 - Determine if needs have been addressed (other projects/programs)
 - Identify new data that is required to draft P&N
 - Review new data and determine if there are new problems to address with the P&N
 - Develop a DRAFT IBR Purpose and Need
 - CAG/Program Team recommend DRAFT P&N to ESG
 - ESG provides feedback on DRAFT IBR P&N
 - Draft IBR P&N is presented to Bi-State Legislative Committee
 - Develop FINAL IBR P&N
 - ESG Recommends FINAL IBR Purpose and Need to ODOT/WSDOT

Note: This graphic is a work in progress showing conceptual relationships between anticipated groups of partner agencies and community representatives and process flow for an example program activity (i.e. establishing the Purpose and Need statement). It does not represent all relationships, stakeholders or responsible parties that will be engaged (e.g. FHWA and FTA).

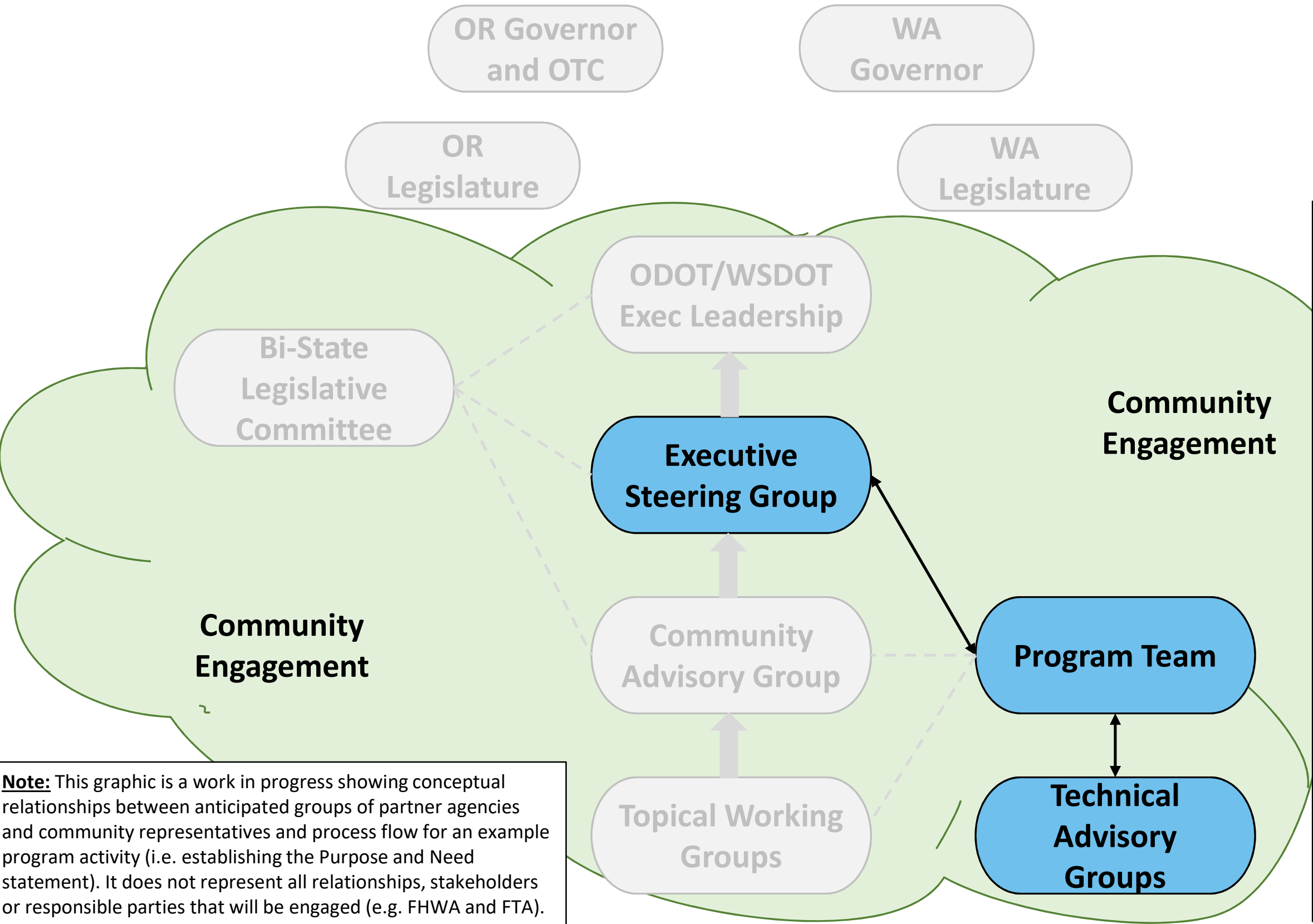
Interstate Bridge Replacement Program
Working Draft Process Diagram – Purpose and Need



- IBR Program Purpose and Need**
- Review previous planning efforts
 - **Develop approach to identify the program purpose and need (P&N)**
 - Determine if needs have been addressed (other projects/programs)
 - Identify new data that is required to draft P&N
 - Review new data and determine if there are new problems to address with the P&N
 - Develop a DRAFT IBR Purpose and Need
 - CAG/Program Team recommend DRAFT P&N to ESG
 - ESG provides feedback on DRAFT IBR P&N
 - Draft IBR P&N is presented to Bi-State Legislative Committee
 - Develop FINAL IBR P&N
 - ESG Recommends FINAL IBR Purpose and Need to ODOT/WSDOT

Note: This graphic is a work in progress showing conceptual relationships between anticipated groups of partner agencies and community representatives and process flow for an example program activity (i.e. establishing the Purpose and Need statement). It does not represent all relationships, stakeholders or responsible parties that will be engaged (e.g. FHWA and FTA).

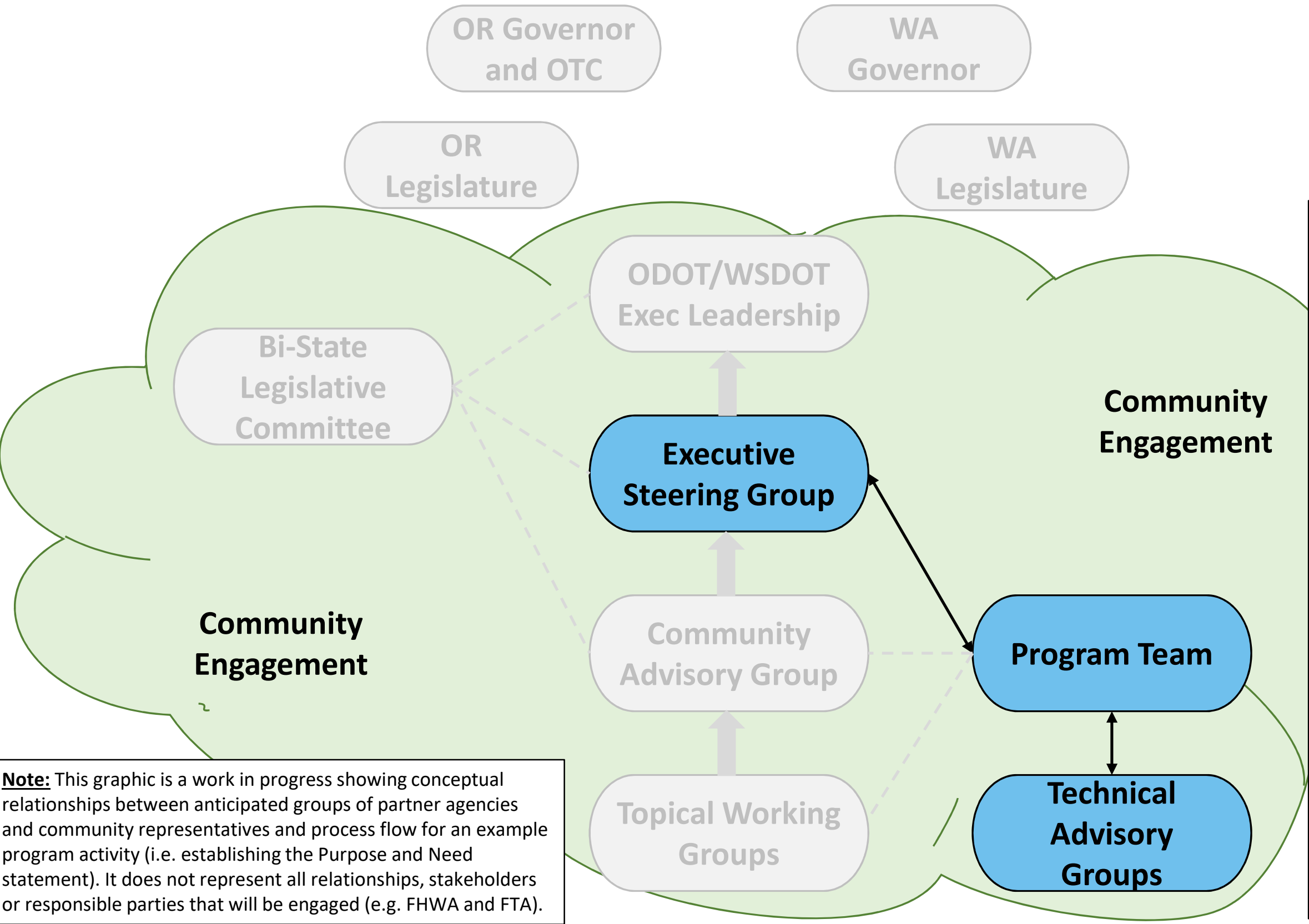
Interstate Bridge Replacement Program
Working Draft Process Diagram – Purpose and Need



IBR Program Purpose and Need

- Review previous planning efforts
- Develop approach to identify the program purpose and need (P&N)
- **Determine if needs have been addressed (other projects/programs)**
- Identify new data that is required to draft P&N
- Review new data and determine if there are new problems to address with the P&N
- Develop a DRAFT IBR Purpose and Need
- CAG/Program Team recommend DRAFT P&N to ESG
- ESG provides feedback on DRAFT IBR P&N
- Draft IBR P&N is presented to Bi-State Legislative Committee
- Develop FINAL IBR P&N
- ESG Recommends FINAL IBR Purpose and Need to ODOT/WSDOT

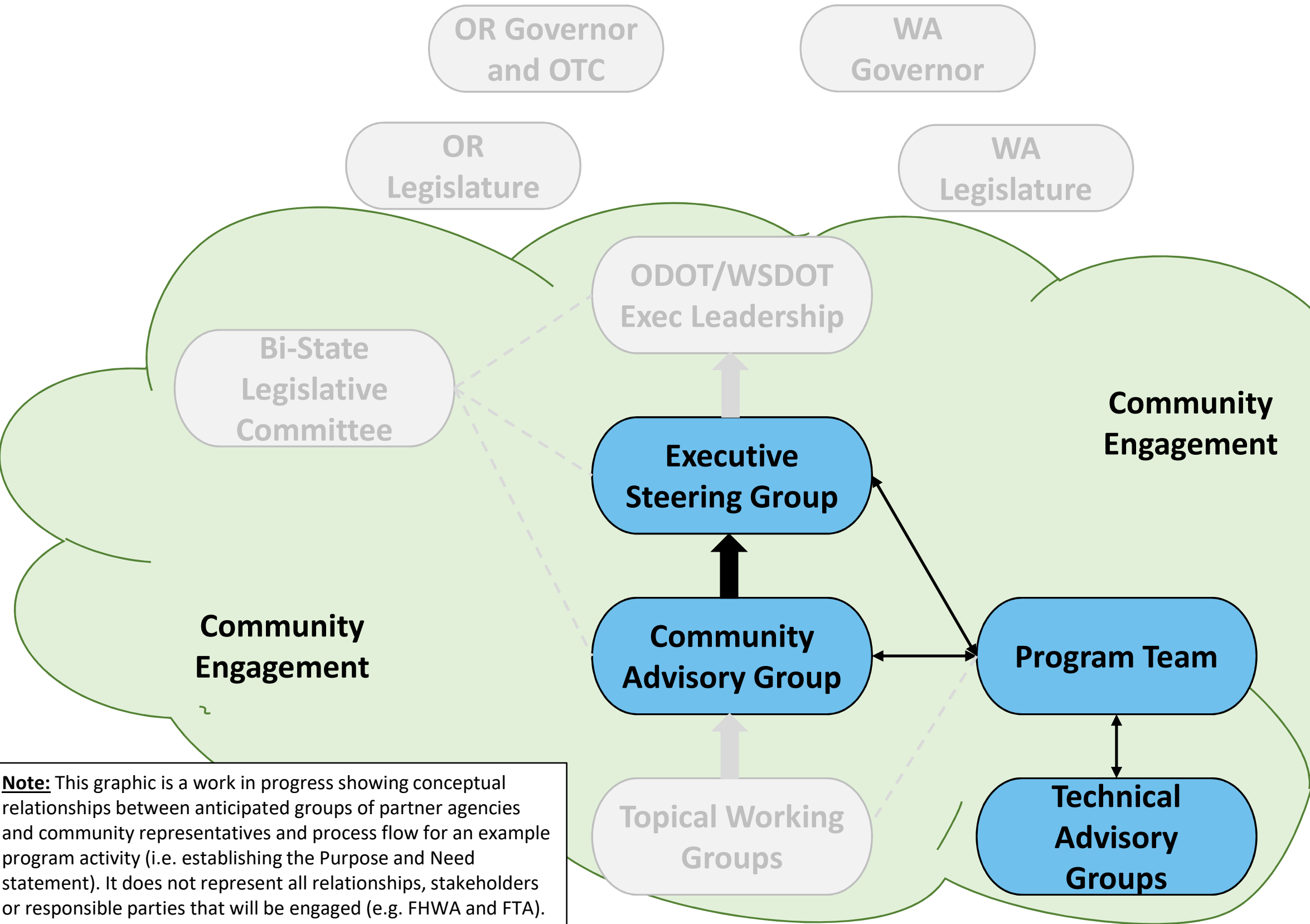
Interstate Bridge Replacement Program
Working Draft Process Diagram – Purpose and Need



- IBR Program Purpose and Need**
- Review previous planning efforts
 - Develop approach to identify the program purpose and need (P&N)
 - Determine if needs have been addressed (other projects/programs)
 - **Identify new data that is required to draft P&N**
 - Review new data and determine if there are new problems to address with the P&N
 - Develop a DRAFT IBR Purpose and Need
 - CAG/Program Team recommend DRAFT P&N to ESG
 - ESG provides feedback on DRAFT IBR P&N
 - Draft IBR P&N is presented to Bi-State Legislative Committee
 - Develop FINAL IBR P&N
 - ESG Recommends FINAL IBR Purpose and Need to ODOT/WSDOT

Note: This graphic is a work in progress showing conceptual relationships between anticipated groups of partner agencies and community representatives and process flow for an example program activity (i.e. establishing the Purpose and Need statement). It does not represent all relationships, stakeholders or responsible parties that will be engaged (e.g. FHWA and FTA).

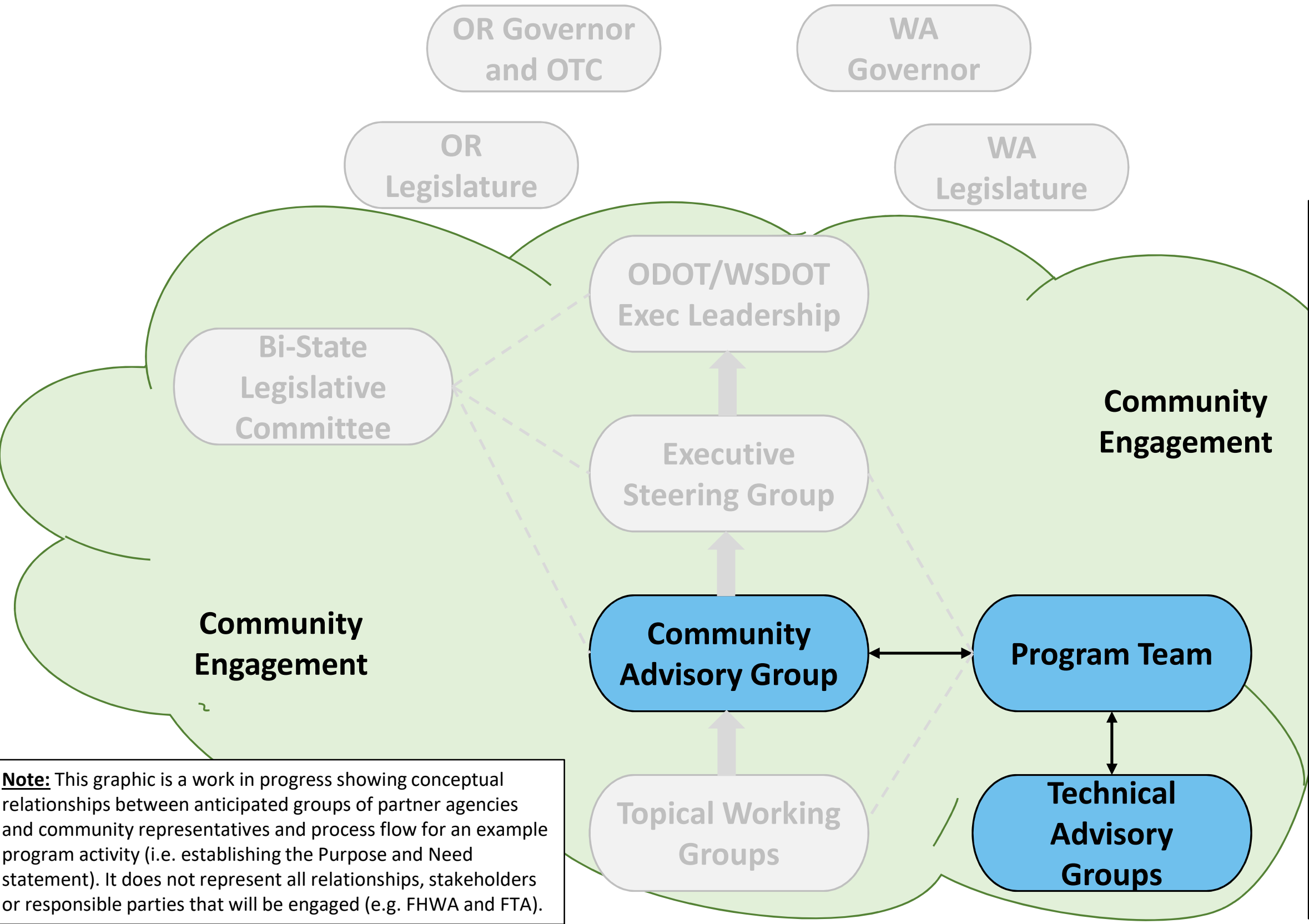
Interstate Bridge Replacement Program
Working Draft Process Diagram – Purpose and Need



- IBR Program Purpose and Need**
- Review previous planning efforts
 - Develop approach to identify the program purpose and need (P&N)
 - Determine if needs have been addressed (other projects/programs)
 - Identify new data that is required to draft P&N
 - **Review new data and determine if there are new problems to address with the P&N**
 - Develop a DRAFT IBR Purpose and Need
 - CAG/Program Team recommend DRAFT P&N to ESG
 - ESG provides feedback on DRAFT IBR P&N
 - Draft IBR P&N is presented to Bi-State Legislative Committee
 - Develop FINAL IBR P&N
 - ESG Recommends FINAL IBR Purpose and Need to ODOT/WSDOT

Note: This graphic is a work in progress showing conceptual relationships between anticipated groups of partner agencies and community representatives and process flow for an example program activity (i.e. establishing the Purpose and Need statement). It does not represent all relationships, stakeholders or responsible parties that will be engaged (e.g. FHWA and FTA).

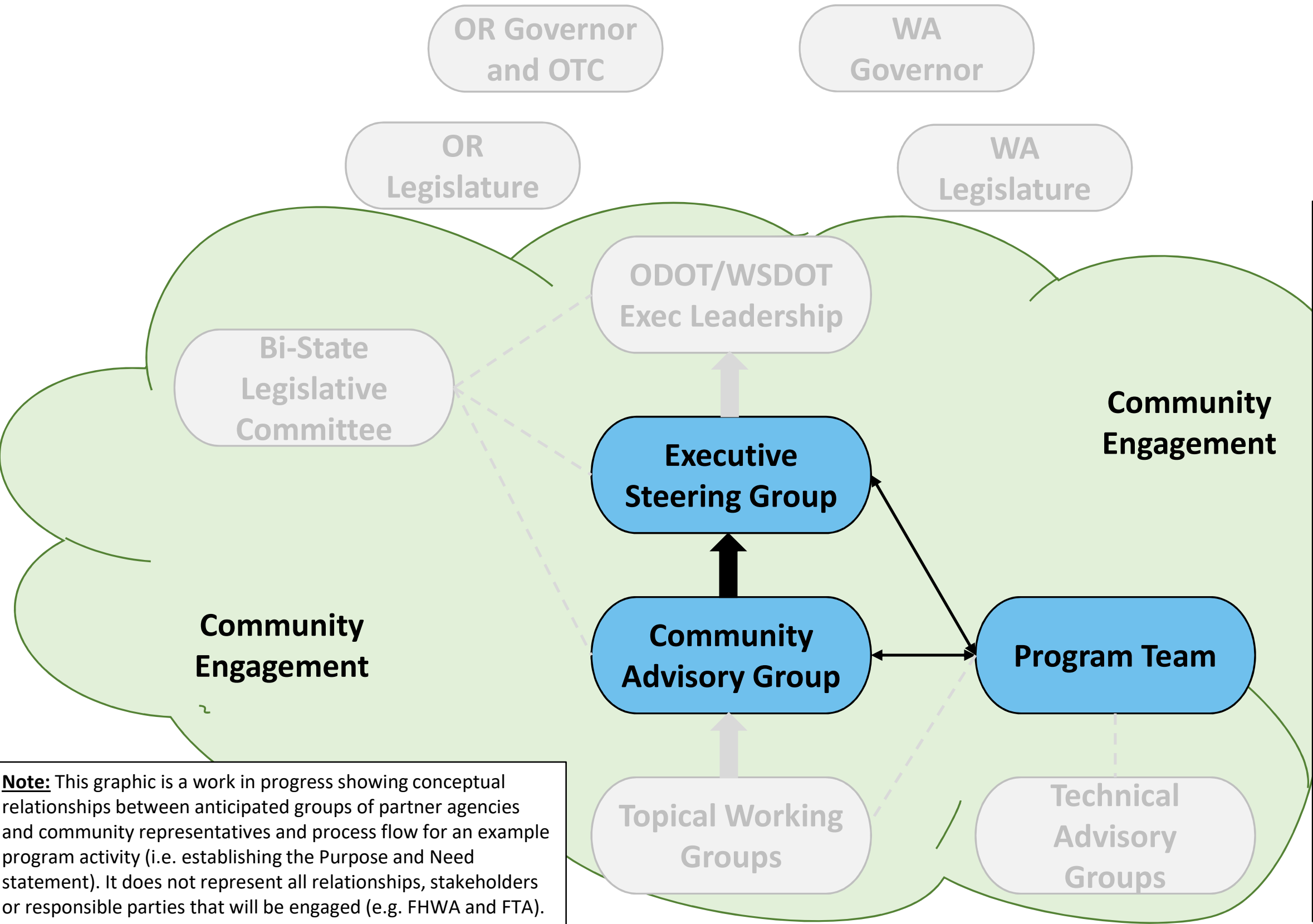
Interstate Bridge Replacement Program
Working Draft Process Diagram – Purpose and Need



- IBR Program Purpose and Need**
- Review previous planning efforts
 - Develop approach to identify the program purpose and need (P&N)
 - Determine if needs have been addressed (other projects/programs)
 - Identify new data that is required to draft P&N
 - Review new data and determine if there are new problems to address with the P&N
 - **Develop a DRAFT IBR Purpose and Need**
 - CAG/Program Team recommend DRAFT P&N to ESG
 - ESG provides feedback on DRAFT IBR P&N
 - Draft IBR P&N is presented to Bi-State Legislative Committee
 - Develop FINAL IBR P&N
 - ESG Recommends FINAL IBR Purpose and Need to ODOT/WSDOT

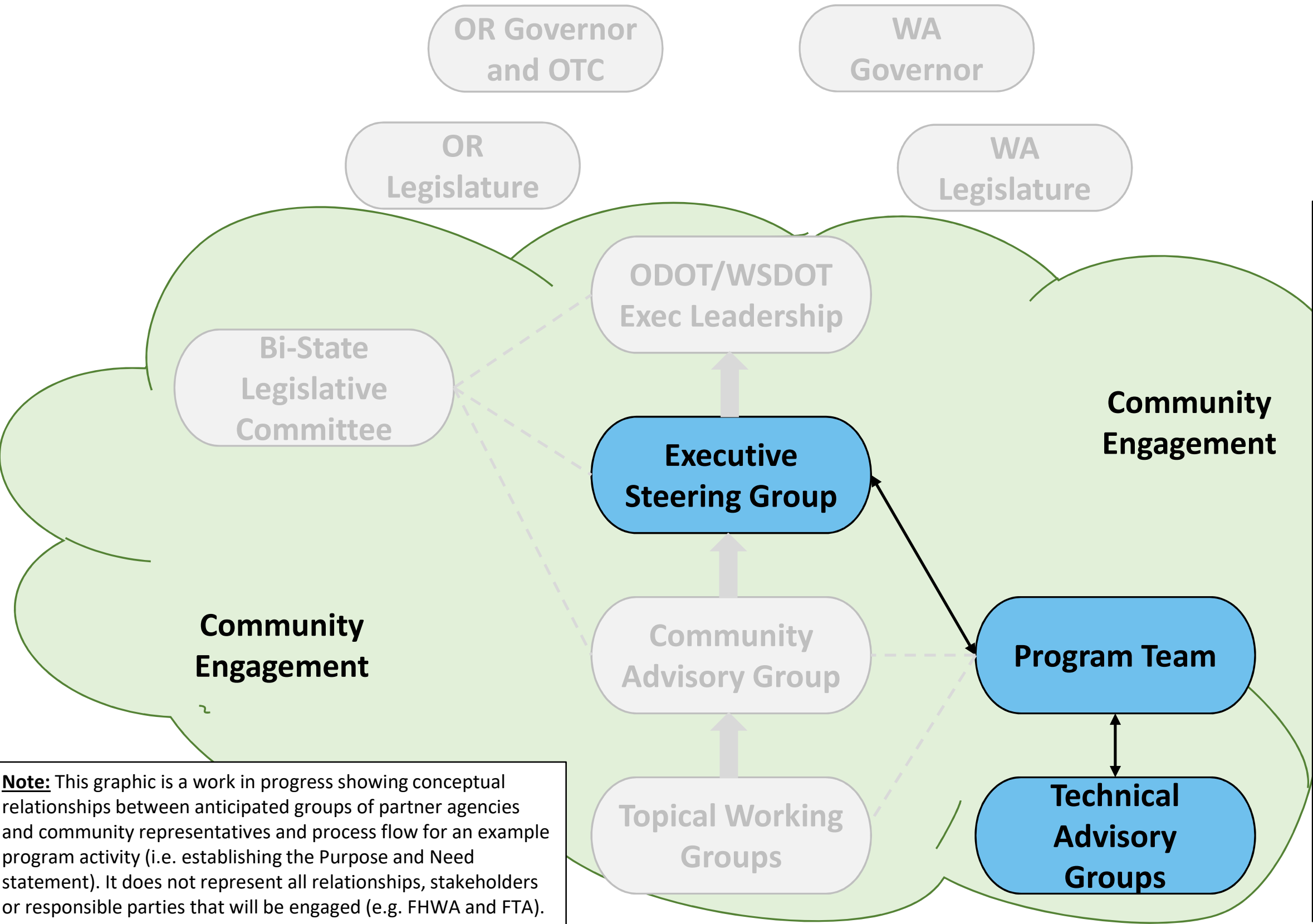
Note: This graphic is a work in progress showing conceptual relationships between anticipated groups of partner agencies and community representatives and process flow for an example program activity (i.e. establishing the Purpose and Need statement). It does not represent all relationships, stakeholders or responsible parties that will be engaged (e.g. FHWA and FTA).

Interstate Bridge Replacement Program
Working Draft Process Diagram – Purpose and Need



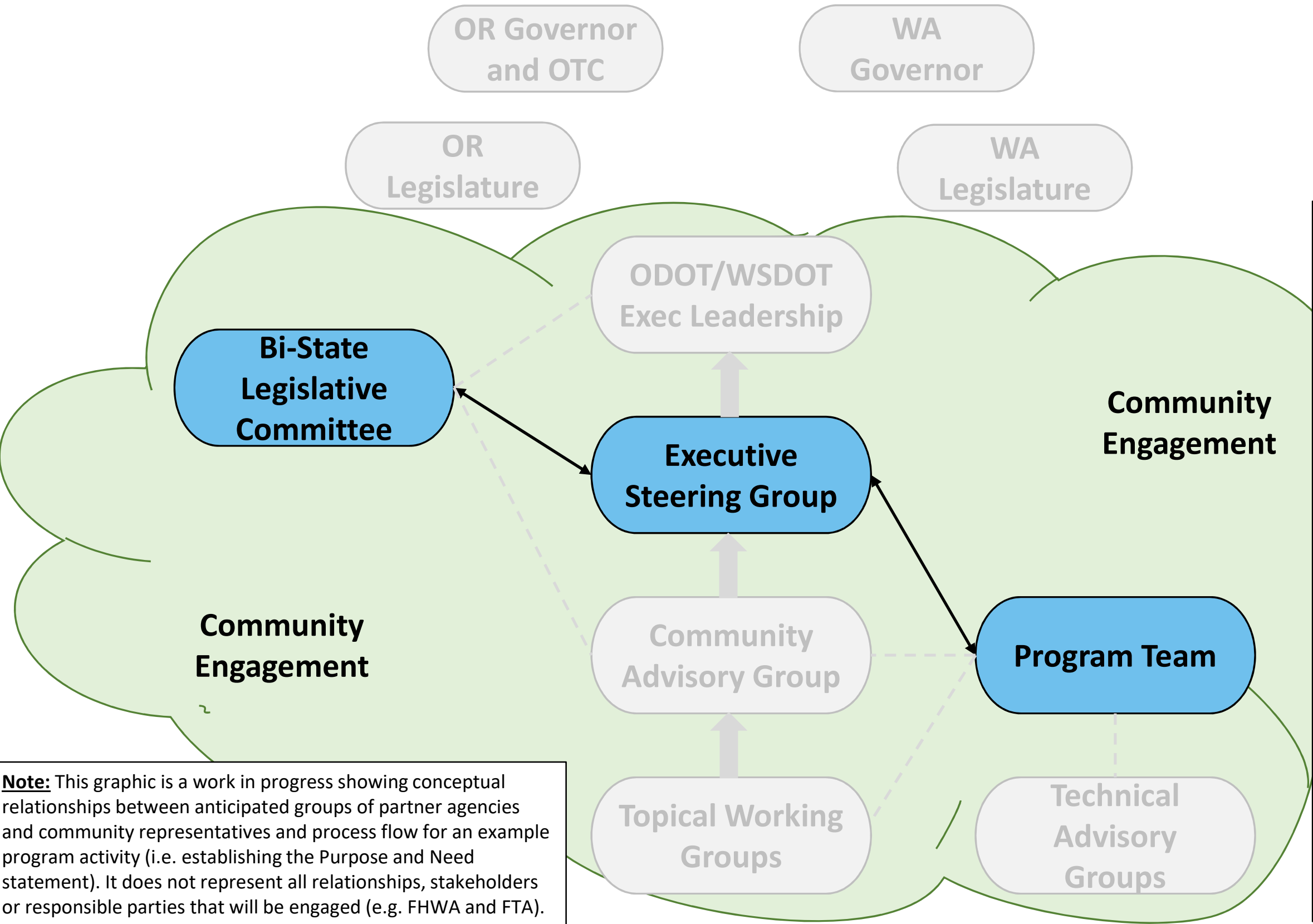
- IBR Program Purpose and Need**
- Review previous planning efforts
 - Develop approach to identify the program purpose and need (P&N)
 - Determine if needs have been addressed (other projects/programs)
 - Identify new data that is required to draft P&N
 - Review new data and determine if there are new problems to address with the P&N
 - Develop a DRAFT IBR Purpose and Need
 - **CAG/Program Team recommend DRAFT P&N to ESG**
 - ESG provides feedback on DRAFT IBR P&N
 - Draft IBR P&N is presented to Bi-State Legislative Committee
 - Develop FINAL IBR P&N
 - ESG Recommends FINAL IBR Purpose and Need to ODOT/WSDOT

Interstate Bridge Replacement Program
Working Draft Process Diagram – Purpose and Need



- IBR Program Purpose and Need**
- Review previous planning efforts
 - Develop approach to identify the program purpose and need (P&N)
 - Determine if needs have been addressed (other projects/programs)
 - Identify new data that is required to draft P&N
 - Review new data and determine if there are new problems to address with the P&N
 - Develop a DRAFT IBR Purpose and Need
 - CAG/Program Team recommend DRAFT P&N to ESG
 - **ESG provides feedback on DRAFT IBR P&N**
 - Draft IBR P&N is presented to Bi-State Legislative Committee
 - Develop FINAL IBR P&N
 - ESG Recommends FINAL IBR Purpose and Need to ODOT/WSDOT

Interstate Bridge Replacement Program
Working Draft Process Diagram – Purpose and Need

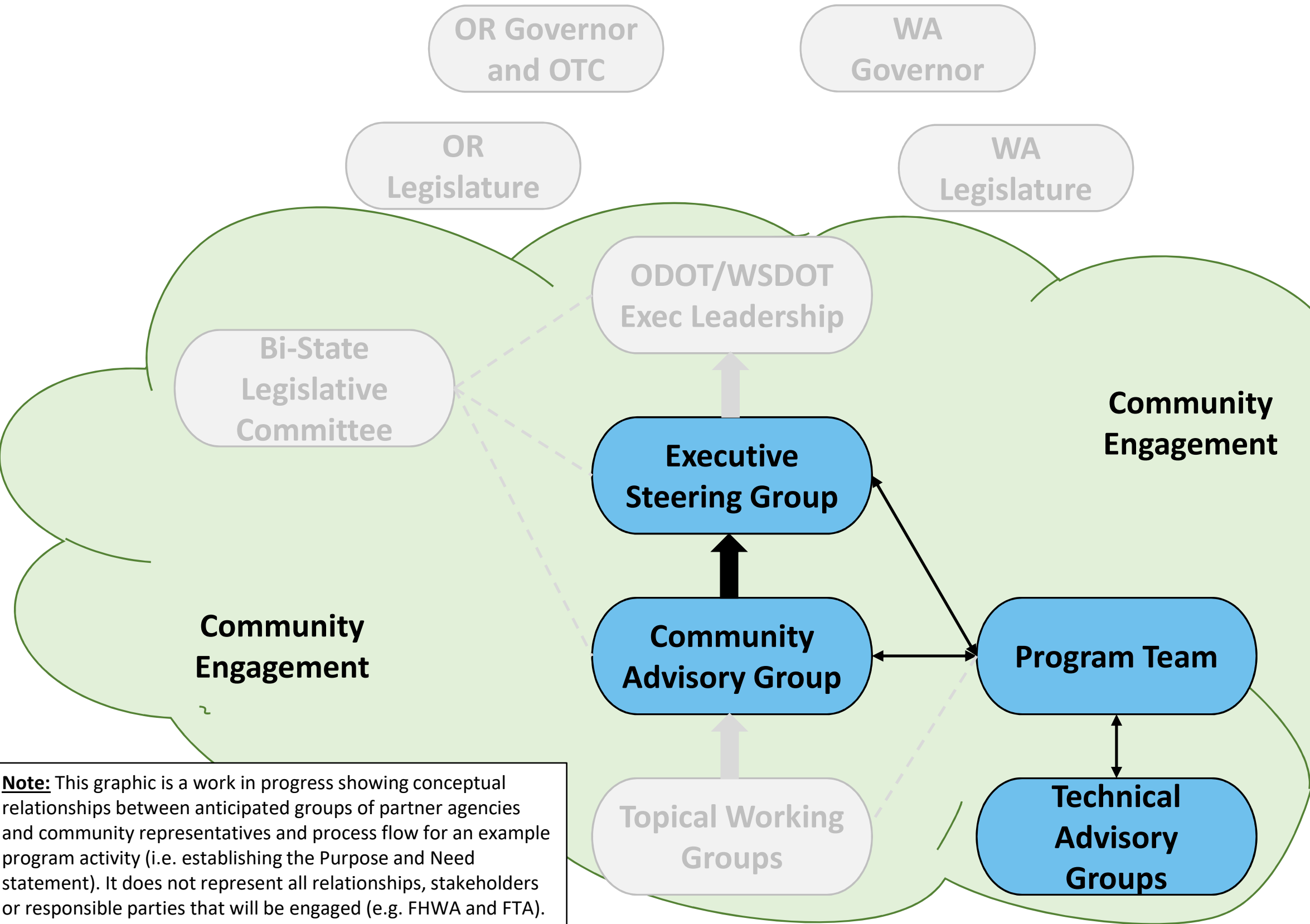


IBR Program Purpose and Need

- Review previous planning efforts
- Develop approach to identify the program purpose and need (P&N)
- Determine if needs have been addressed (other projects/programs)
- Identify new data that is required to draft P&N
- Review new data and determine if there are new problems to address with the P&N
- Develop a DRAFT IBR Purpose and Need
- CAG/Program Team recommend DRAFT P&N to ESG
- ESG provides feedback on DRAFT IBR P&N
- **Draft IBR P&N is presented to Bi-State Legislative Committee**
- Develop FINAL IBR P&N
- ESG Recommends FINAL IBR Purpose and Need to ODOT/WSDOT

Note: This graphic is a work in progress showing conceptual relationships between anticipated groups of partner agencies and community representatives and process flow for an example program activity (i.e. establishing the Purpose and Need statement). It does not represent all relationships, stakeholders or responsible parties that will be engaged (e.g. FHWA and FTA).

Interstate Bridge Replacement Program
Working Draft Process Diagram – Purpose and Need

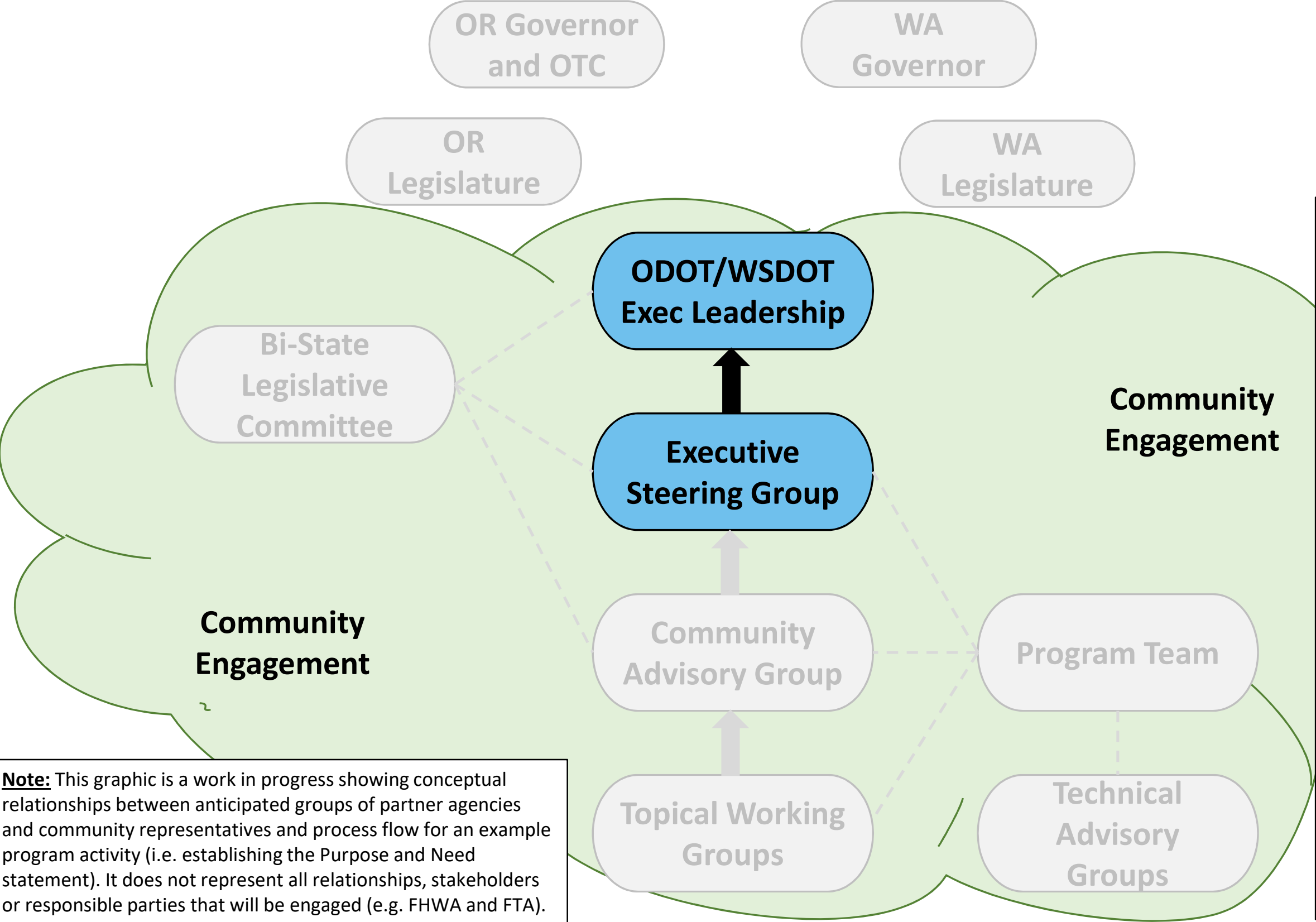


- IBR Program Purpose and Need**
- Review previous planning efforts
 - Develop approach to identify the program purpose and need (P&N)
 - Determine if needs have been addressed (other projects/programs)
 - Identify new data that is required to draft P&N
 - Review new data and determine if there are new problems to address with the P&N
 - Develop a DRAFT IBR Purpose and Need
 - CAG/Program Team recommend DRAFT P&N to ESG
 - ESG provides feedback on DRAFT IBR P&N
 - Draft IBR P&N is presented to Bi-State Legislative Committee
 - **Develop FINAL IBR P&N**
 - ESG Recommends FINAL IBR Purpose and Need to ODOT/WSDOT

Note: This graphic is a work in progress showing conceptual relationships between anticipated groups of partner agencies and community representatives and process flow for an example program activity (i.e. establishing the Purpose and Need statement). It does not represent all relationships, stakeholders or responsible parties that will be engaged (e.g. FHWA and FTA).

Interstate Bridge Replacement Program
Working Draft Process Diagram – Purpose and Need

Note: Federal Leads (FHWA/FTA) approval required for Purpose and Need



IBR Program Purpose and Need

- Review previous planning efforts
- Develop approach to identify the program purpose and need (P&N)
- Determine if needs have been addressed (other projects/programs)
- Identify new data that is required to draft P&N
- Review new data and determine if there are new problems to address with the P&N
- Develop a DRAFT IBR Purpose and Need
- CAG/Program Team recommend DRAFT P&N to ESG
- ESG provides feedback on DRAFT IBR P&N
- Draft IBR P&N is presented to Bi-State Legislative Committee
- Develop FINAL IBR P&N
- **ESG Recommends FINAL IBR Purpose and Need to ODOT/WSDOT**