

# Transportation Measure Tier 1 Staff Recommendation Overview

Council Work Session  
Nov. 19, 2019



Metro





# #GetMoving Measure structure

Tier 1 corridor  
projects

Tier 2 corridors

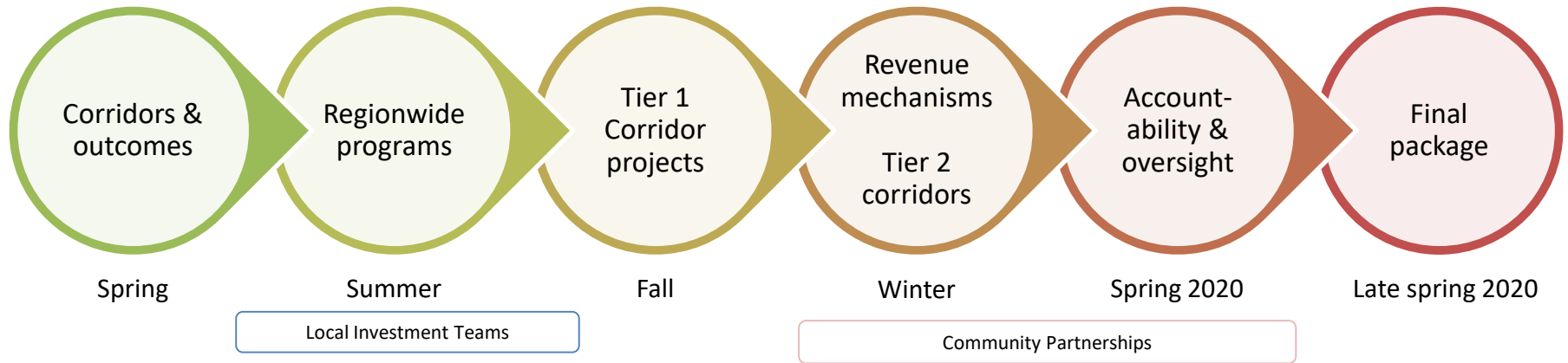
Regionwide  
programs

Oversight &  
accountability

Advancing  
regional policy



# #GetMoving Timeline overview

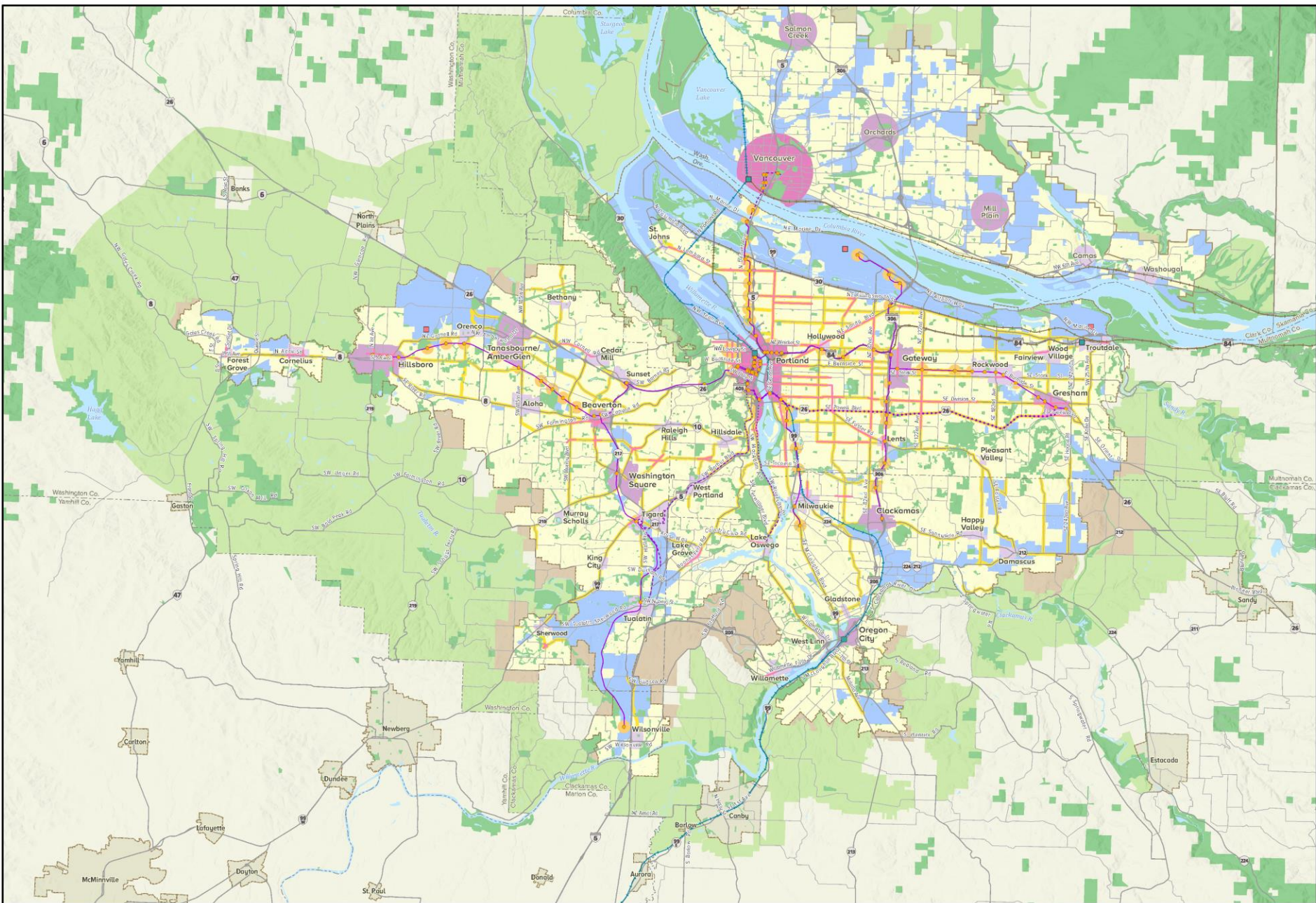


# Council/Task Force:

## Priority measure outcomes

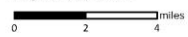
- Improve safety
- Prioritize investments supporting communities of color
- Make it easier to get around
- Address climate change
- Support resiliency
- Support clean air and water and healthy ecosystems
- Drive economic growth
- Leverage regional and local investments





# 2040 Growth Concept Map

September 2014



This information on this map was derived from digital data obtained from MetroGIS. One was taken in the creation of this map. Metro cannot accept any responsibility for errors, omissions, or positional accuracy. There are no warranties, expressed or implied, including the warranty of merchantability or fitness for a particular purpose, acceptance of the product, however, collection of any errors are appreciated.

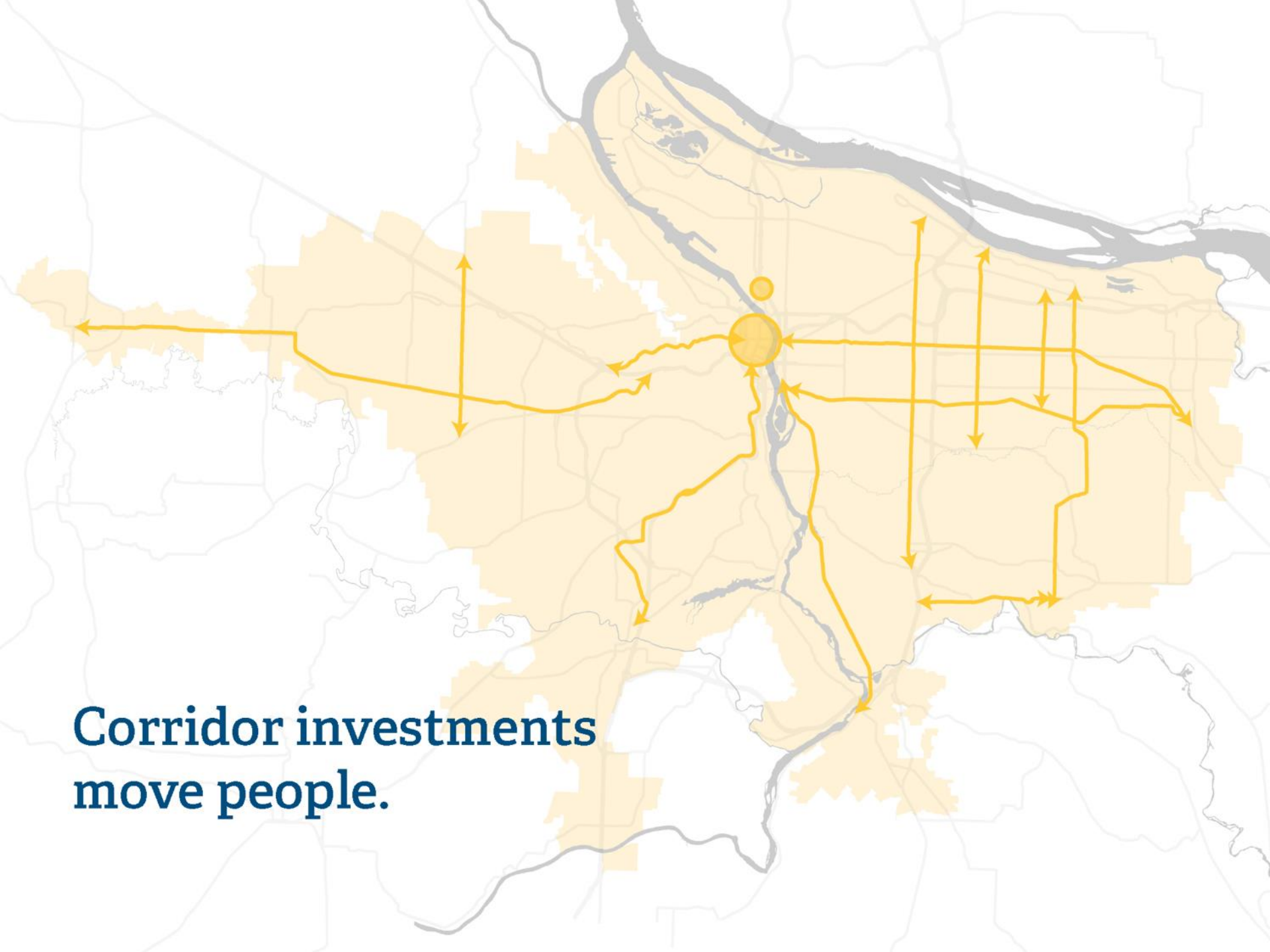
The Metro 2040 Growth Concept defines the form of regional growth and development for the Portland metropolitan region. The Growth Concept was adopted in December 1995 through the Region 2040 planning and public involvement process. This concept is intended to provide long term growth management of the region.

The map highlights elements of parallel planning efforts including: the 2035 Regional Transportation Plan that outlines investments in multiple modes of transportation, and a commitment to local policies and investments that will help the region better accommodate growth within its centers, corridors and employment areas.

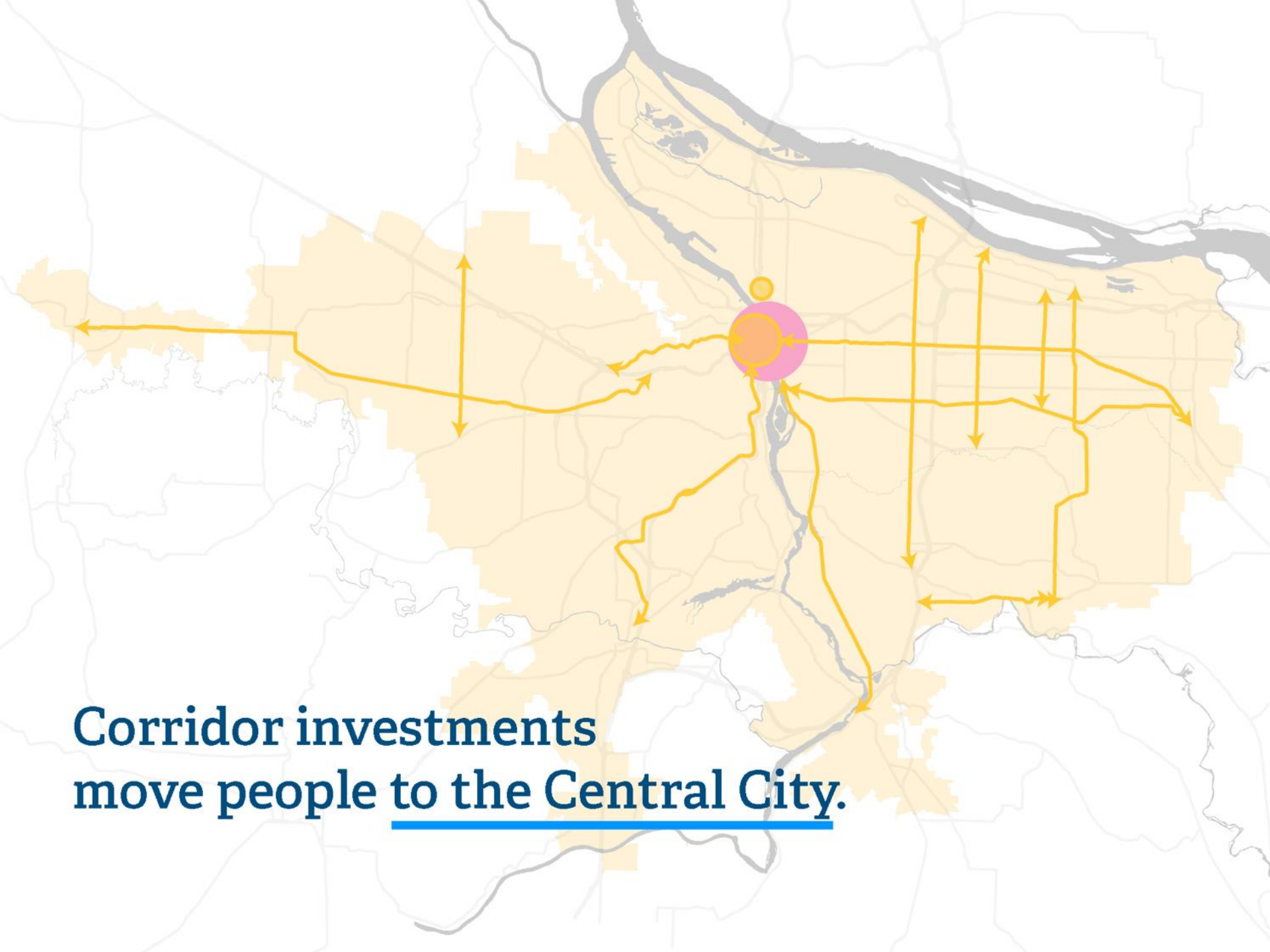
For more information on these initiatives, visit [www.metrogis.com](http://www.metrogis.com).

- Central city
- Regional center
- Town center
- Station communities
- Main streets
- Corridors
- Employment land
- Parks and natural areas
- Neighborhood
- Rural reserve
- Urban reserve
- Urban growth boundaries
- County boundaries
- Existing high capacity transit
- Planned high capacity transit
- Proposed high capacity transit tier 1
- Mainline freight
- High speed rail
- County boundaries
- Neighboring cities
- Airports
- Inter-city rail terminal





**Corridor investments  
move people.**



**Corridor investments  
move people to the Central City.**

**Corridor investments  
move people to Regional Centers.**





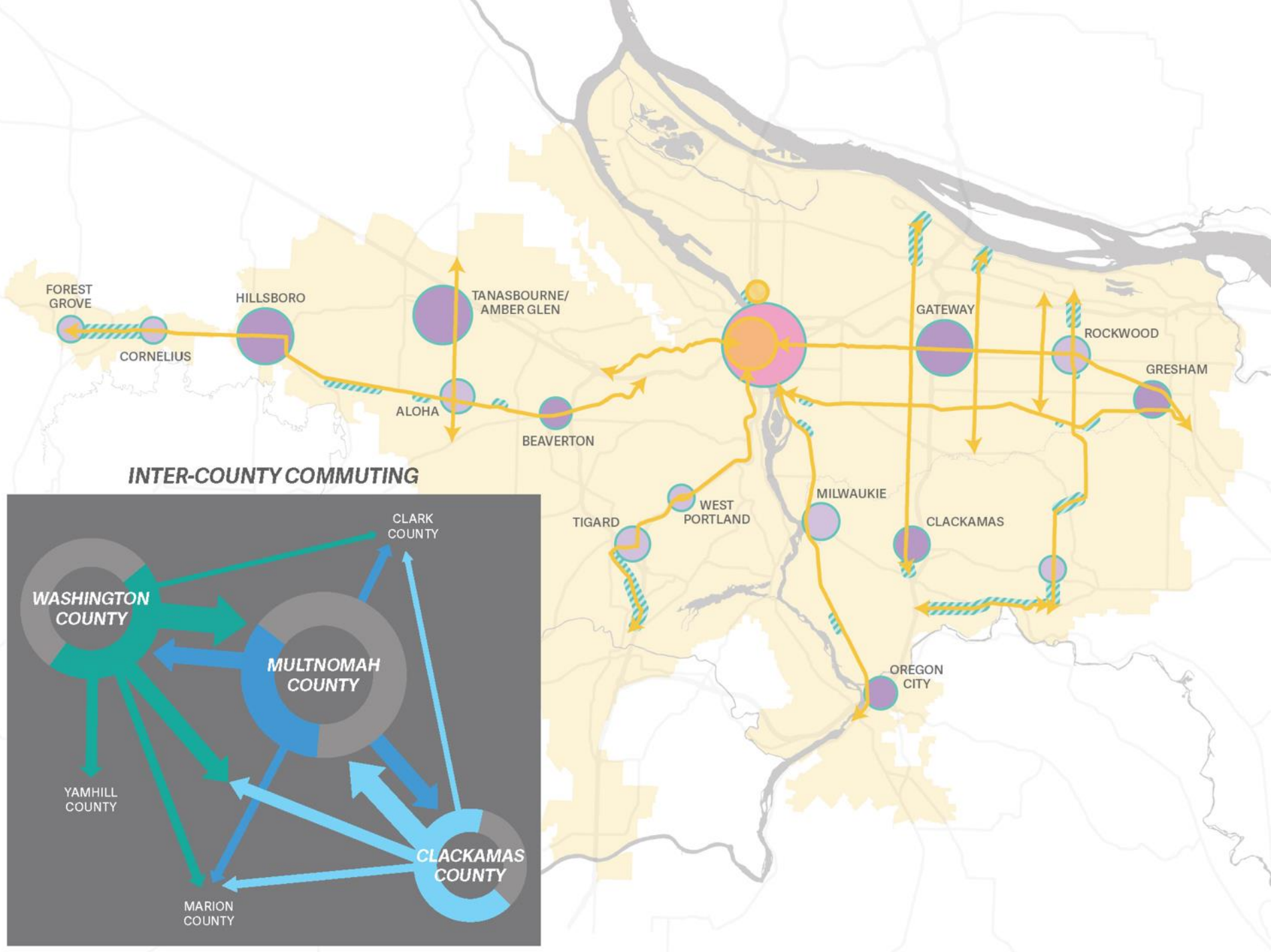
**Corridor investments  
move people to Town Centers.**





**Corridor investments  
move people to jobs and opportunity.**





# Staff Tier 1 project recommendation

## Key factors:

Performance-based analysis

Council/Task Force outcomes

LIT/Community input

Public partner collaboration

Risk & readiness





# Staff Tier 1 project recommendation overview

PROPOSED  
CORRIDOR FUNDING

**\$3.11B**

+

POTENTIAL  
LEVERAGED FUNDS

**\$2.13B**

=

TOTAL CORRIDOR  
INVESTMENT

**\$5.24B**

*Does not include potential Tier 2 corridor projects or regionwide programs*



Illustrative images of investment types in recommendation

# Staff Tier 1 recommendation: Potential benefits

**Investment in transit:** \$1.92 billion –  
975 hours of daily passenger delay saved

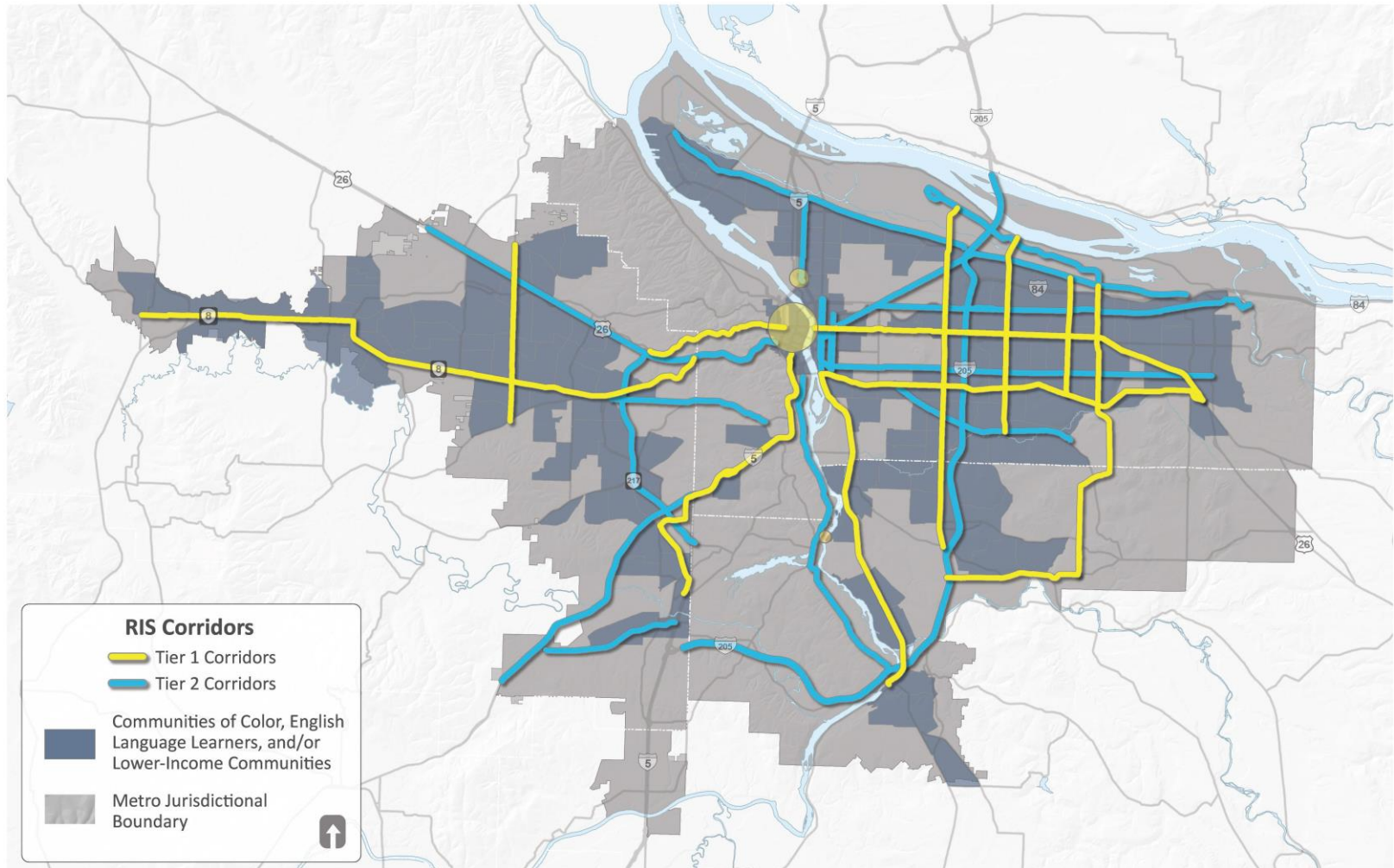
**Investment in equity focus areas:** \$2.33 billion

**Investments in safety:** \$1.06 billion –  
addressing 20% of region's serious crashes

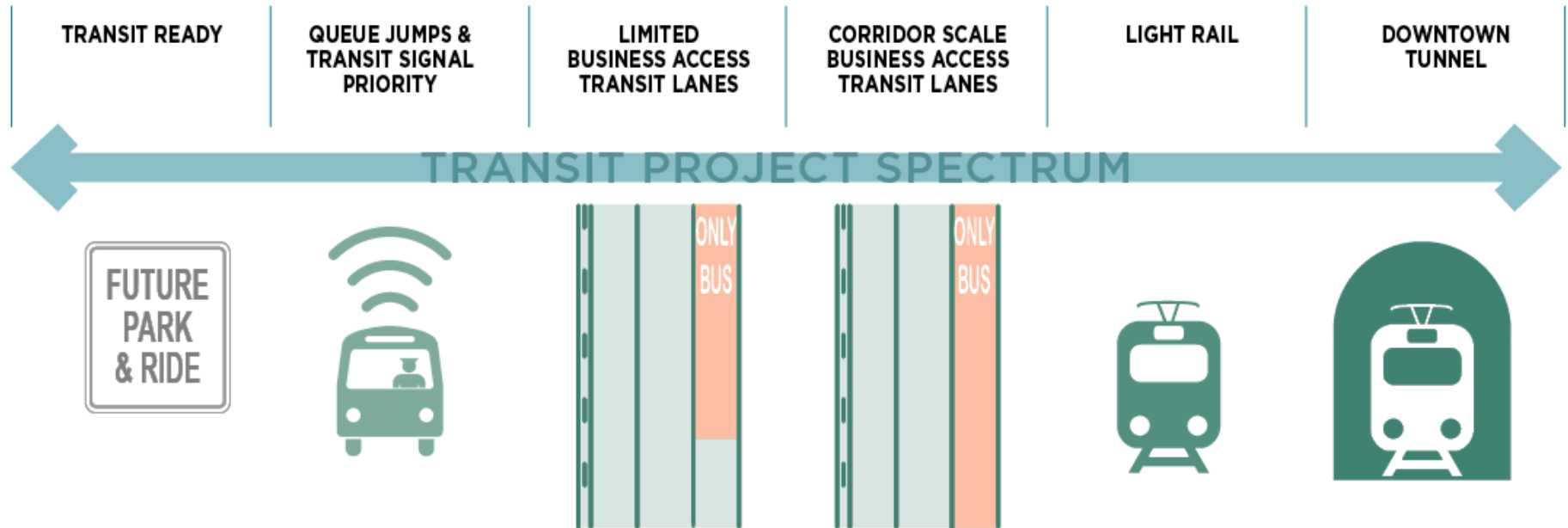
*(Figures do not include benefits of regionwide programs or possible Tier 2 corridor investments)*



# Advancing racial equity with access to opportunity



# Making transit better



# Staff Project Recommendation: Transit highlights

## SW Corridor light rail

### McLoughlin

Enhanced transit, Lines 33 and 99

Park Ave. Park & Ride expansion

Future corridor planning

### TV Highway

Enhanced transit, Line 57

Improved Hillsboro Transit Center

Future corridor planning

### E 82<sup>nd</sup> Ave.

Enhanced transit/BRT, Line 72

MAX station access planning

### E 122<sup>nd</sup> Ave.

Enhanced transit, Line 73

### Burnside

Enhanced transit, Line 20

Sunset & Gresham transit center planning

### SW 185<sup>th</sup> Ave.

New MAX overcrossing

Enhanced transit, Line 52

### Powell

Future HCT planning

### Central City

MAX Tunnel planning



# Tier 1 Safety & Active Transportation highlights

## SW Corridor

Marquam Hill Connector  
Barbur sidewalks, crossings, bikeways  
Tigard Triangle  
Downtown Tigard access

## Sidewalks, safe crossings, lighting, safe bikeways

McLoughlin  
TV Highway  
82<sup>nd</sup>  
122<sup>nd</sup>  
162<sup>nd</sup>  
181<sup>st</sup>

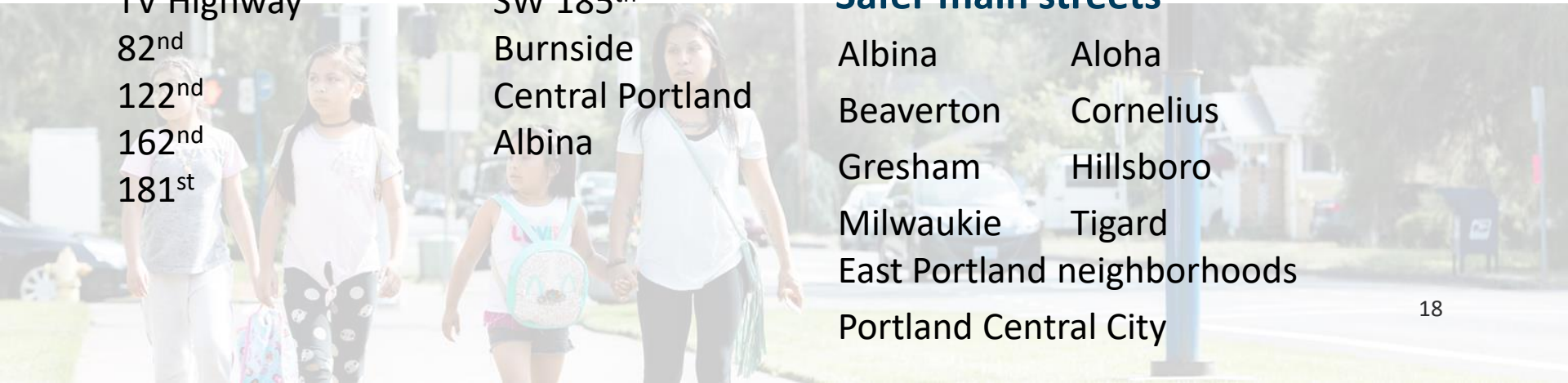
Highway 212  
SW 185<sup>th</sup>  
Burnside  
Central Portland  
Albina

## Trails/Off-Street Options

Albina/Lloyd  
Willamette Falls Bike/Ped Plan  
Trolley Trail bridge planning  
162<sup>nd</sup> Ave RR undercrossing  
Alderwood trail planning  
122<sup>nd</sup> I-84 Trail connection

## Safer main streets

Albina                      Aloha  
Beaverton                Cornelius  
Gresham                 Hillsboro  
Milwaukie               Tigard  
East Portland neighborhoods  
Portland Central City



# Stable Communities

Working with community and partners to create anti-displacement and equitable development strategies

**Proposal:** 2% of each corridor's funding



*Metro Council direction*

# Programs to develop further



**Safe Routes  
To School**



**Active Transportation  
Regional Connections**



**Student Fare  
Affordability**



**Safety Hot Spots**



**Bus Electrification**



**Protecting/Preserving  
Multifamily Housing**



**Better Bus**



**Main Streets  
Revitalization**



**Future Corridor  
Planning**



# Next steps for projects

<b>Nov. 20</b>	<b>Task Force meeting</b> Tier 1 project amendment discussion
<b>Dec. 18</b>	<b>Task Force meeting</b> <b>Clackamas C.C., Harmony Campus</b> Tier 1 project recommendation
<b>Jan. 7</b>	<b>Metro Council work session</b> Receive Task Force Tier 1 project recommendation
<b>Jan. 9</b>	<b>Metro Council public hearing</b> PCC Southeast
<b>Jan. 14</b>	<b>Metro Council work session</b> Tier 1 project direction
<b>Feb. 19</b>	<b>Task Force meeting</b> Tier 2 corridors discussion



# Task Force proposed Tier 1 project amendments

Eight members proposed about 30 total amendments: Add, increase funding, modify or remove projects

Most of Recommendation:  
No proposed amendments

Most proposed amendments  
focused on a few corridors



# Where we're at: Measure scope

## Corridors

Staff Recommendation

Tier 1 Measure investments:

**\$3.11B**

Leveraged FTA & Local

Investments:

**\$2.13B**

Total Tier 1

Corridor Investments

**\$5.24B**

## Programs

**\$50 million/year for 20 years**

**\$1B**

**Total Investments \$6.24B**

**Total revenue stream needed \$7-9B**

*\$350-\$450 million annually for 20 years*



**#getmoving2020**  
**getmoving2020.org**

