



Planning parks and nature with communities of color

Connect with Nature

Gabbert Butte Nature Park

July 11, 2019

Connect with Nature

Inclusive process => inclusive outcomes

Planning parks in
collaboration with
people of color



Welcoming parks that
serve people of color



Guiding principles

- Create space for community to lead
- Change “business as usual” to remove barriers to full participation



Exploring new ways to work



- Project team led by organizations serving people of color
- Community members facilitate workshop activities
- Stipends



Multilingual workshops

- Sharing nature experiences
- Visiting Gabbert Butte
- Designing Gabbert Butte
- Designing nature park features



*“Nature is the
foundation.
Everything comes
after that.”*



Spiritual connection

“I feel a connection to nature, to Oregon and the present moment when I am outside.”



Belonging

Gabbert Butte site visit



What would it take to bring your family here?

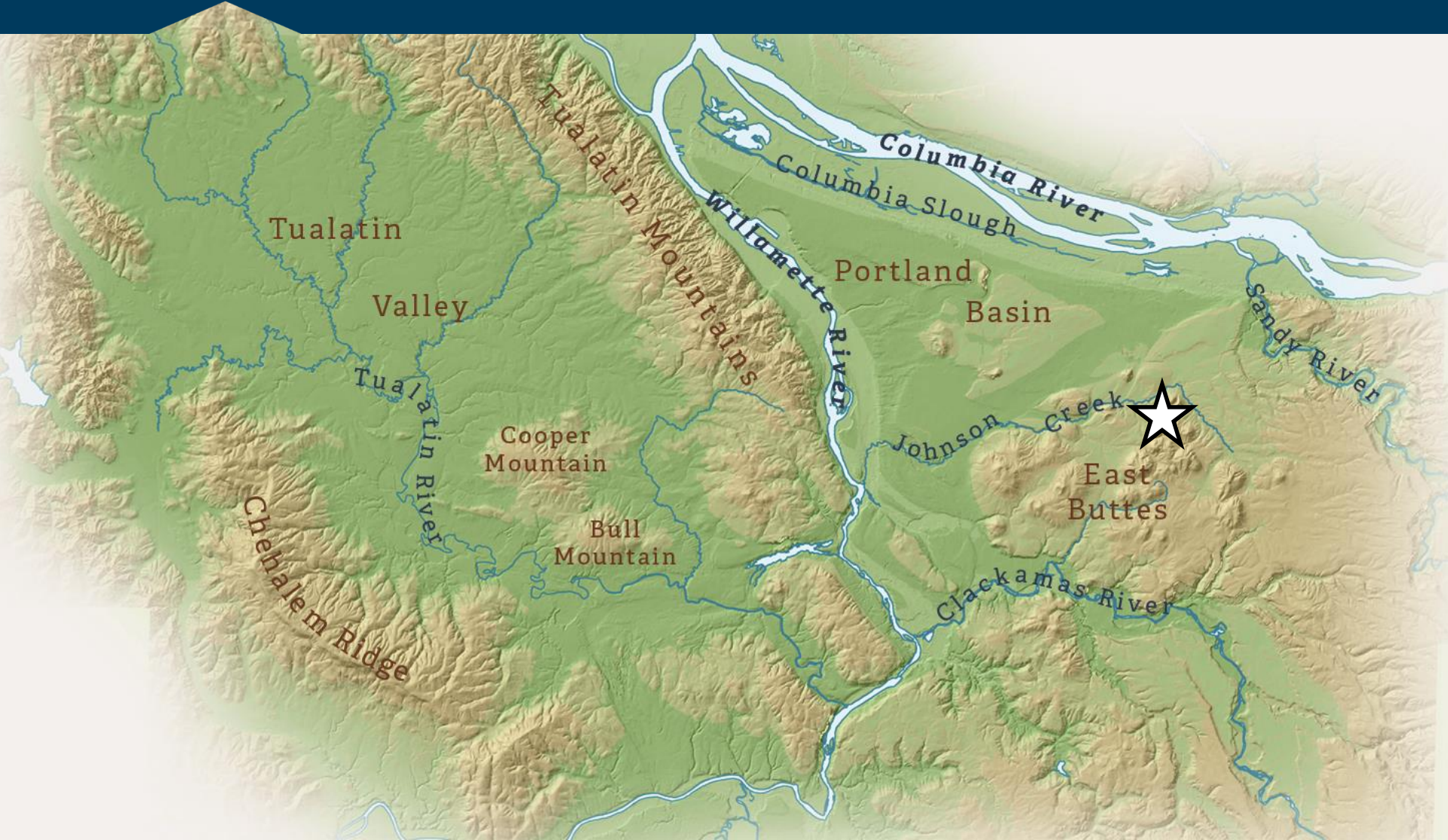
Connect with Nature report

A resource for future work



- What we heard about parks and natural areas
- Engagement approach
- Lessons learned
- Recommendations

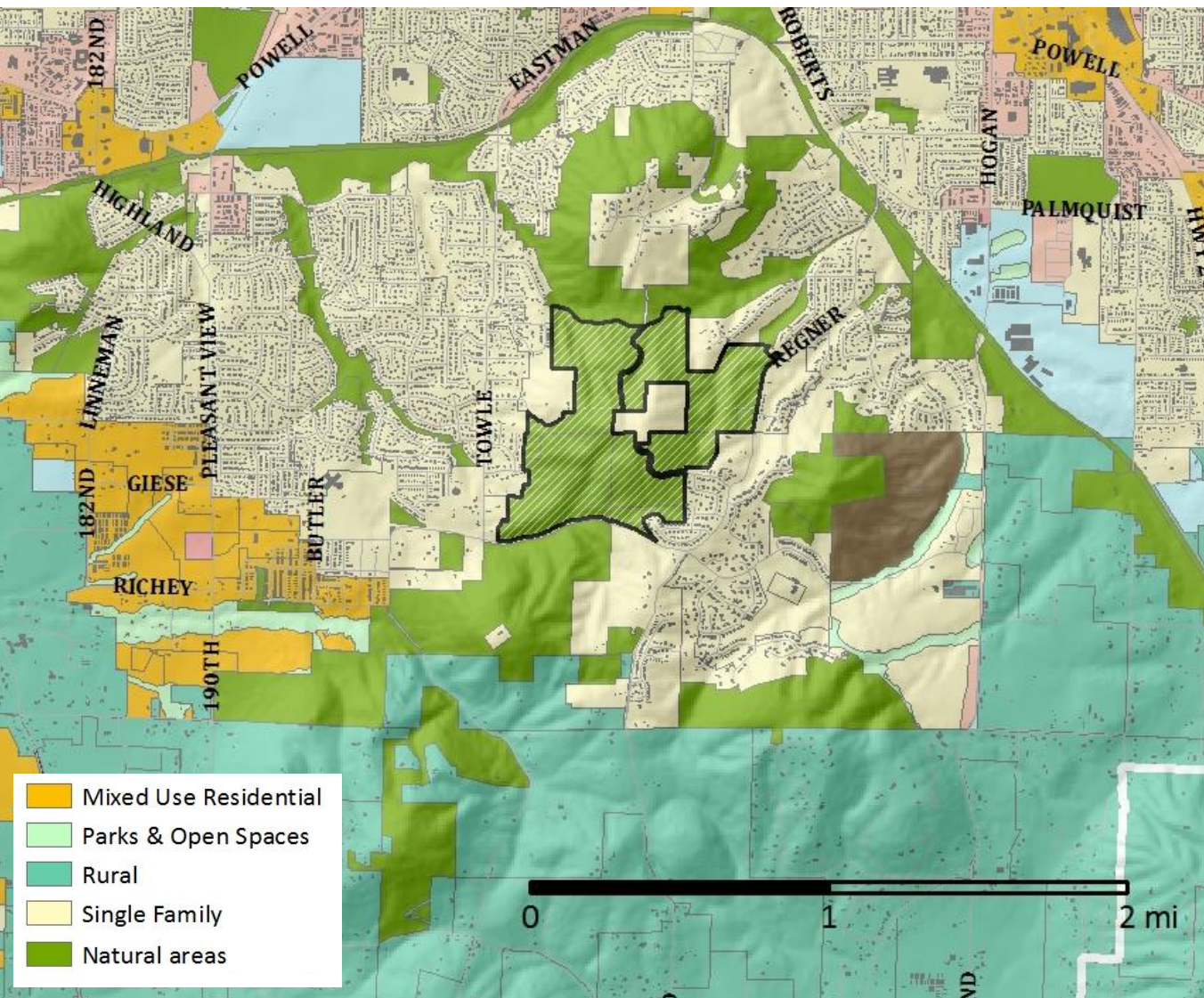
Where in the region is Gabbert Butte?



Where in the region is Gabbert Butte?



Gabbert Butte context

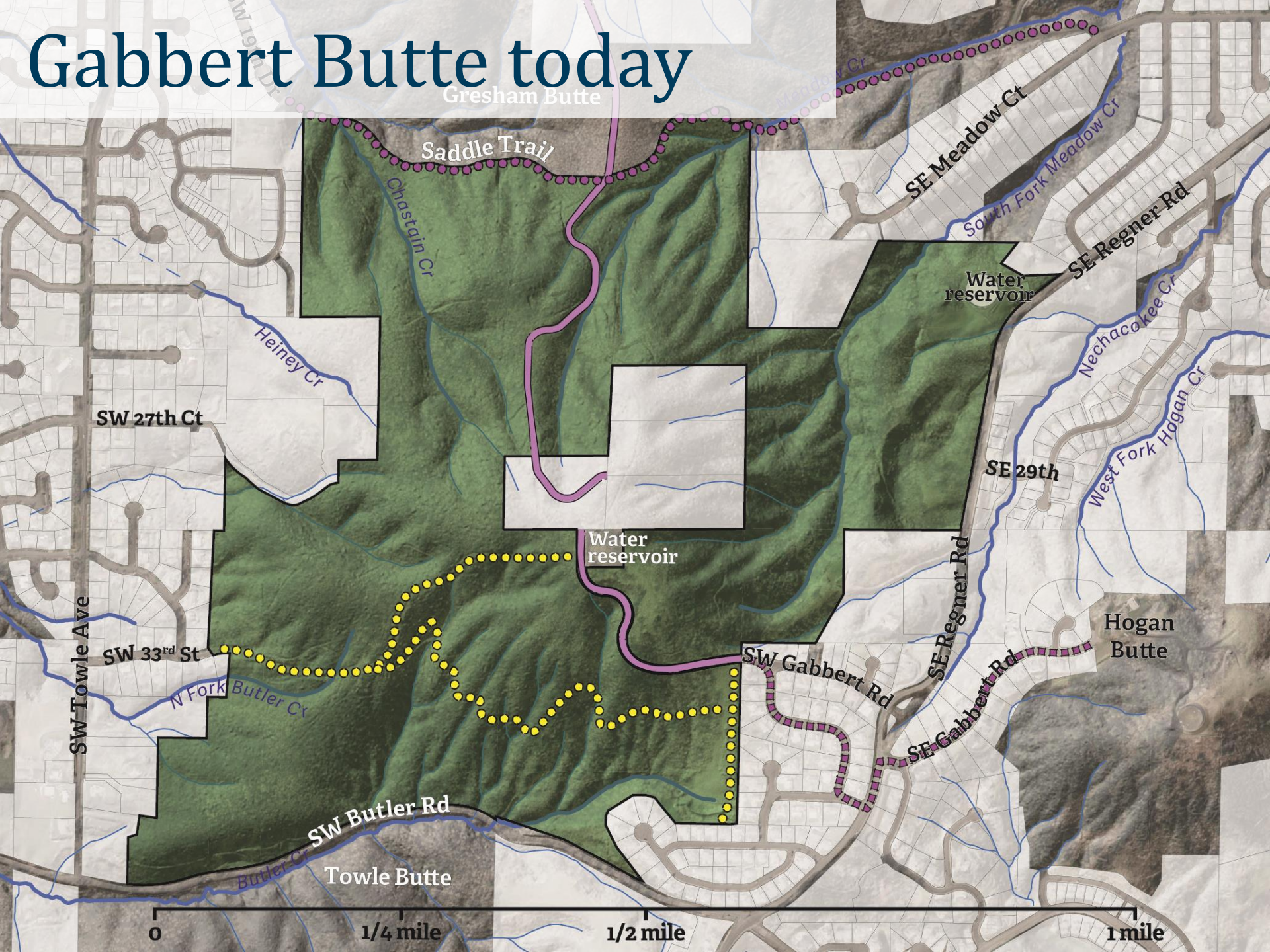




Nature Experience



Gabbert Butte today



Gabbert Butte vision

A nature park that:

- welcomes all cultures, communities, and abilities in the region
- provides meaningful experiences of nature and protects water quality and wildlife habitat
- improves trail connectivity
- celebrates the unique qualities of Gabbert Butte

Community engagement

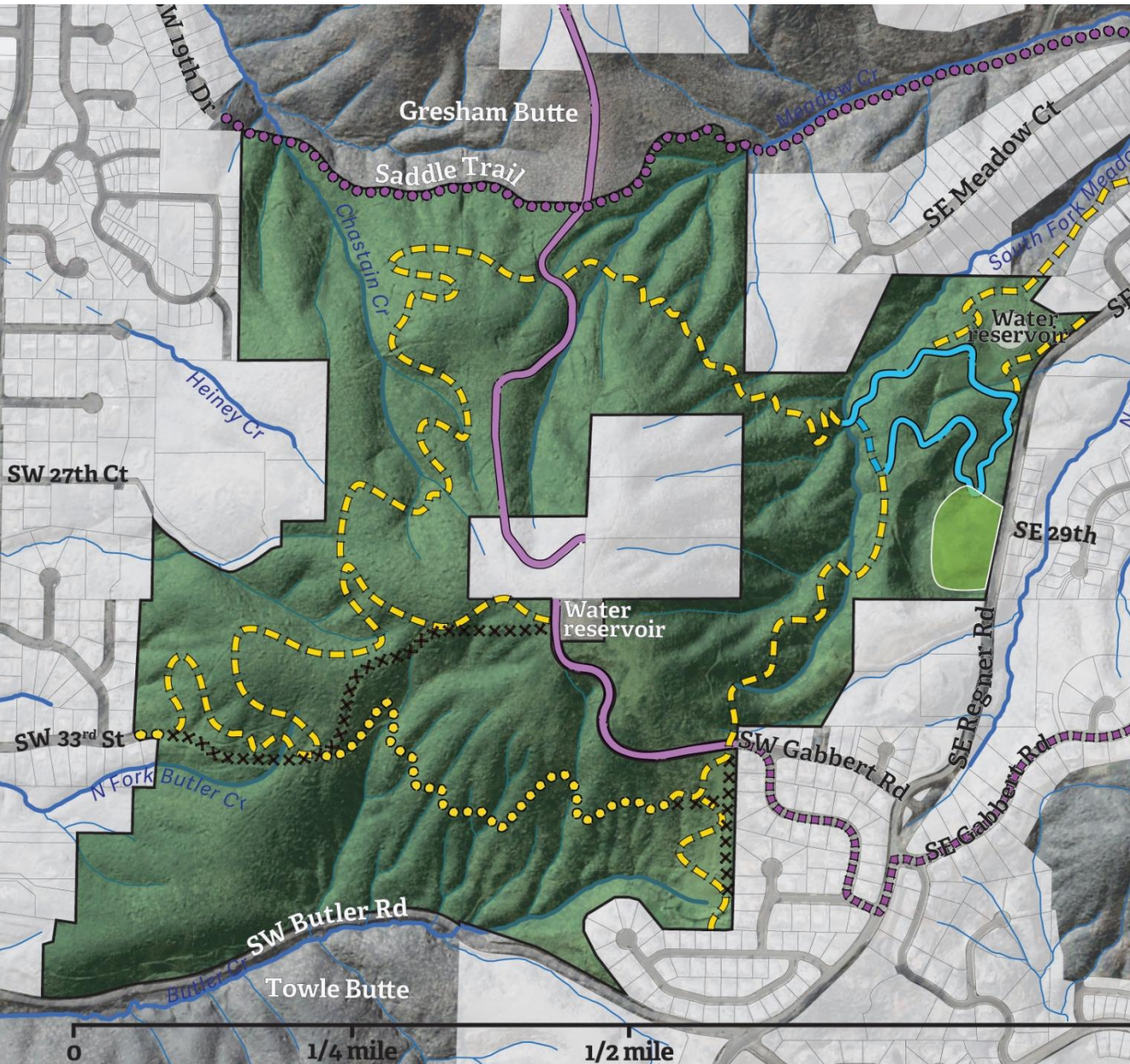
- Stakeholder advisory committee
- Multilingual workshops
- Open houses
- Natural resource Charrettes
- Online surveys
- Site tours
- Deer Glen HOA
- FACT Oregon parents
- Coalition of Gresham Neighborhoods
- Gresham Butte Neighborhood Association



Community feedback

- Overall support and enthusiasm for the plan
- Opportunities for protecting and enhancing habitat
- Need for multigenerational experiences
- Desire for a variety of trail experiences
- Tradeoffs associated with multiuse trails
- Support for off road cycling





Trail plan

- Improve trail safety and connectivity
- Offer a variety of experience types
- All ages and abilities experience

Entry area plan:

- Parking lot and driveway
- Restrooms
- Picnic area
- Flexible space for resting, wildlife viewing or spiritual practice
- Wetland resource protection



Next steps

- Design engineering, permitting (2019/2020)
- Phase 1 construction (2021/2022)



oregonmetro.gov

