

# Regional affordable housing bond

Council Work Session

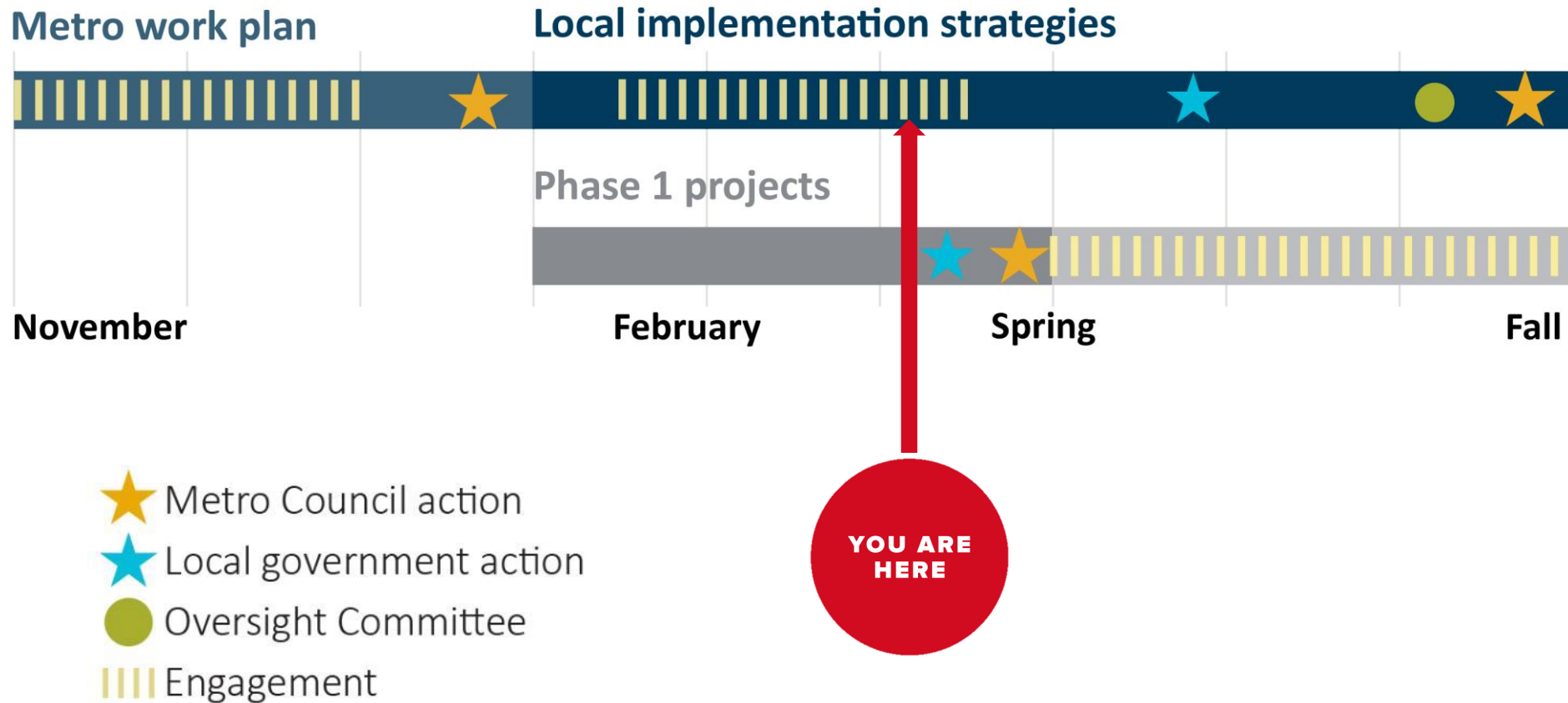
April 30, 2019



Metro



# Timeline to program launch



# Implementation strategy requirements

- ✓ **Development plan** including selection criteria/process and approach to achieve unit targets
- ✓ **Strategies for advancing racial equity** (e.g., barriers to access, inclusive contracting/workforce)
- ✓ **Engagement of historically marginalized communities** in strategy development and implementation





# Partner engagement

- Public events
  - Beaverton
  - Clackamas Co.
- Discussion groups
  - Home Forward
  - Clackamas Co.
  - City of Portland
- Existing meetings
  - Washington Co.
  - City of Gresham
- Surveys
  - City of Portland<sup>4</sup>



## Community Conversation:

# Affordable Housing and Metro Regional Bond

### Conversación de la Comunidad: Vivienda Asequible y Bono Regional Metro

**What's the future of affordable housing in Beaverton?** Come share your solutions and learn about Regional Affordable Housing Bond implementation.

**¿Qué futuro tiene la vivienda asequible en Beaverton?** Venga a compartir su opinión y conozca la implementación del Bono Regional de Vivienda Asequible.

**Thursday, April 4 | 5:30-7:30 PM**

**Highland Park Middle School | 7000 SW Wilson Avenue**

**5:30 PM** – Welcome by Mayor Denny Doyle and Overview  
Bienvenida del alcalde Denny Doyle y Perspectiva general

**6 PM** – Breakout Sessions with Community Members  
Sesiones de Discusión con Miembros de la Comunidad

*Everyone welcome. Dinner, Spanish interpretation and childcare provided.  
Todos son bienvenidos. Se proporcionará interpretación al español y cuidado de niños.*

[BeavertonOregon.gov/housing](http://BeavertonOregon.gov/housing)

 **Need Assistance?**  
503-526-2497 • Use 7-1-1 for relay  
[www.BeavertonOregon.gov/ADA](http://www.BeavertonOregon.gov/ADA)



# Phase 1 projects

Beaverton Mary Ann  
Apartments

Clackamas County  
Gladstone SRO acquisition

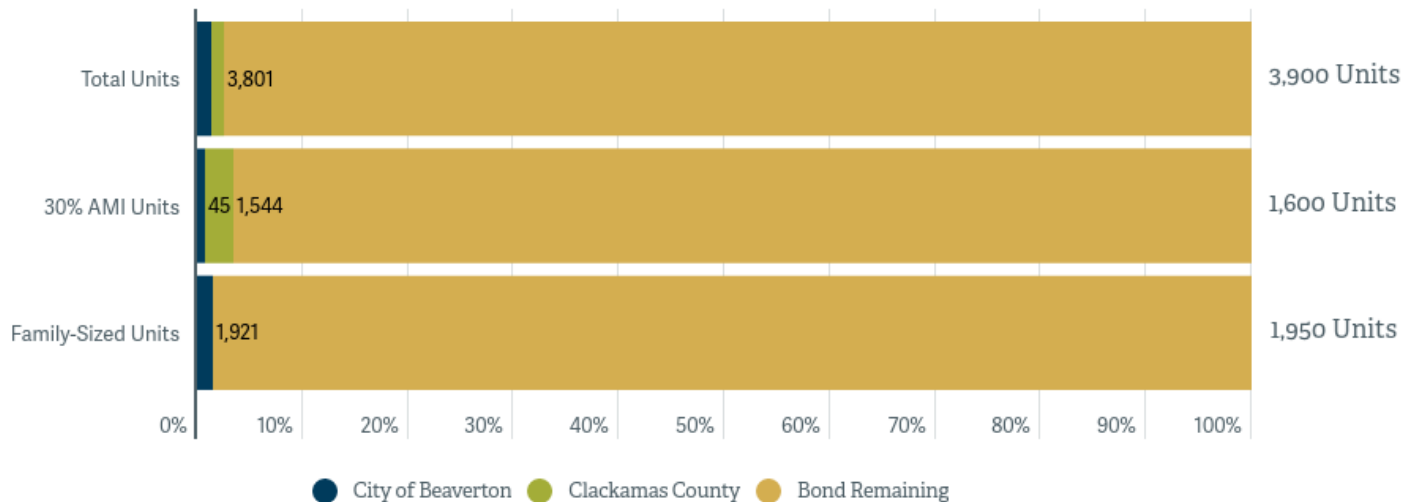
Other identified/potential  
Phase 1 projects:

- Portland/Home Forward
- Washington County

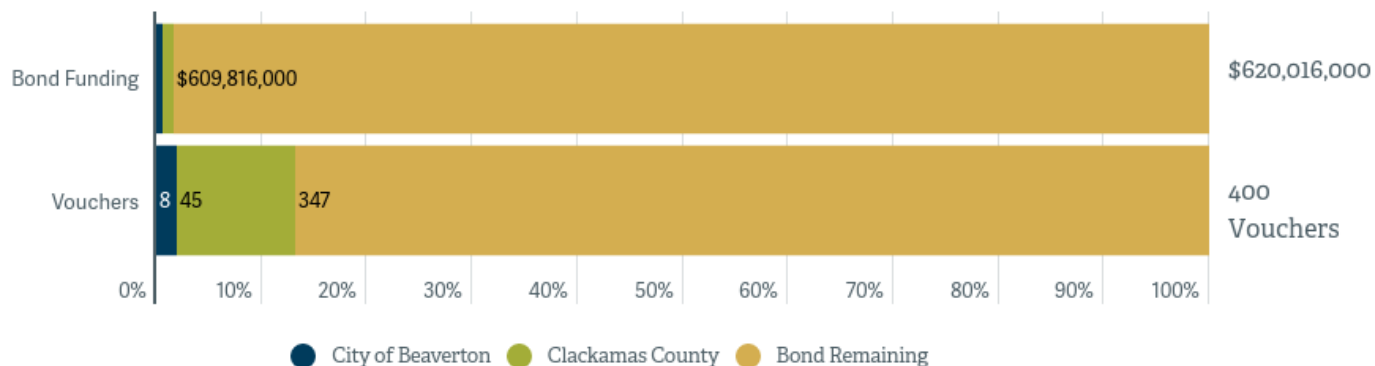


# Tracking progress

## Production Goals



## Production Resources



# Oversight Committee



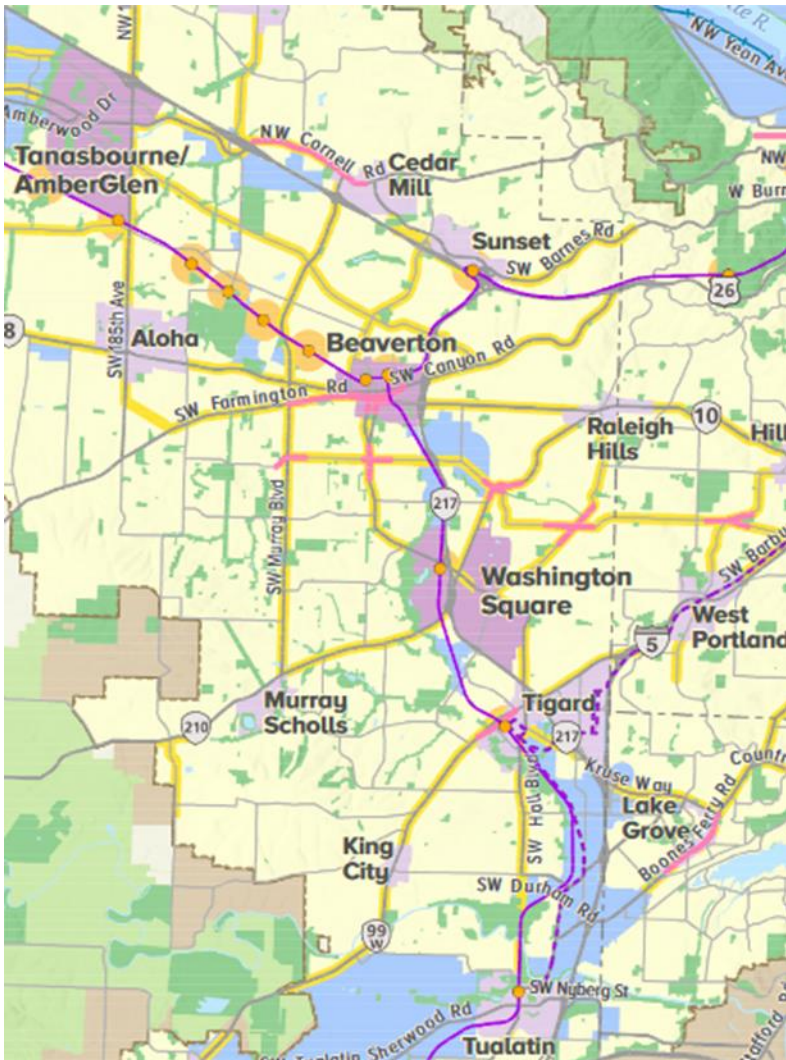
February-April: Three meetings focused on orientation to role

May-June: Jurisdiction meet and greets

July-November:  
Implementation Strategy review

Ongoing: Monitoring and annual reports

# Metro site acquisition program



Implementation planning and outreach underway

\$62 million for ~8-15 regionally significant sites for affordable housing development

Metro to acquire sites, partner with jurisdiction to RFQ; provide gap financing



# Previous Council direction

Location criteria that align with existing Metro policies

Consider other investments (eg, transportation, parks)

Geographic distribution across the region

Look for opportunities to pilot innovations



# Coordinated engagement

Coordinated with  
Transportation and Parks  
& Nature bond planning

Co-created with four  
community-based  
organizations

Seven events in May

Online survey open now



# What we are hearing about location

- Near community
- Near jobs
- Near stores
- Nature / parks
- Good transportation
- Safe area



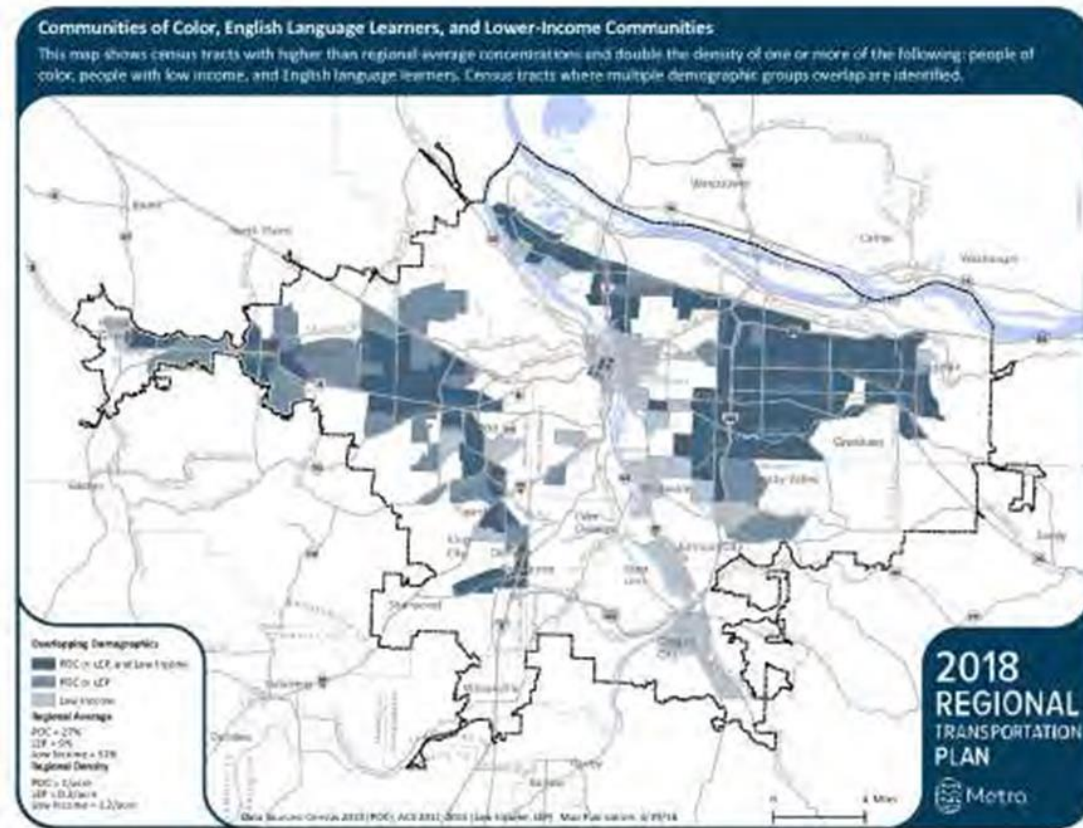


# Advancing racial equity

Locations that stabilize communities, provide access, or expand housing choice

Best practices to reduce barriers to access; support partnerships

Advance outcomes for equitable contracting and workforce





# Equitable contracting and workforce

Seek C2P2 alignment

Consider project and/or program goals

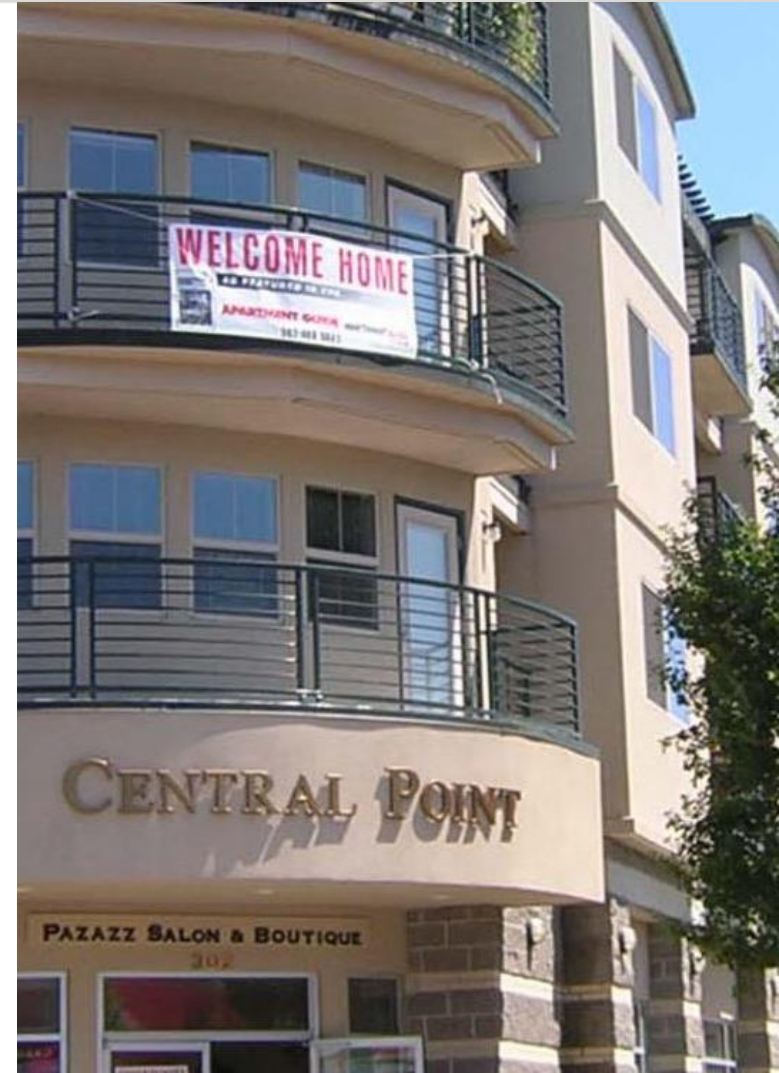
Consider allocation of additional (non-bond) funds to accomplish program goals



# Council Discussion

Does Metro Council support the Site Acquisition Program policy goals, program activities, and engagement approaches?

What goals for equitable workforce and contracting should the Site Acquisition Program incorporate?



# Next steps for Council

## Phase 1 projects (May-June)

### Implementation Strategies:

- Aug. 1: Beaverton and Washington County
- Sept. 5: Clackamas and Metro
- Sept. 26: Hillsboro and Gresham
- Oct./Nov.: Home Forward, Portland



**oregonmetro.gov**

