

Date: Monday, November 21 2018  
From: Ken Lobeck, Funding Programs Lead, 503-797-1785  
Subject: Attachment 1 to the November 2018 MTIP Formal Amendment Staff Report – Project Location Maps

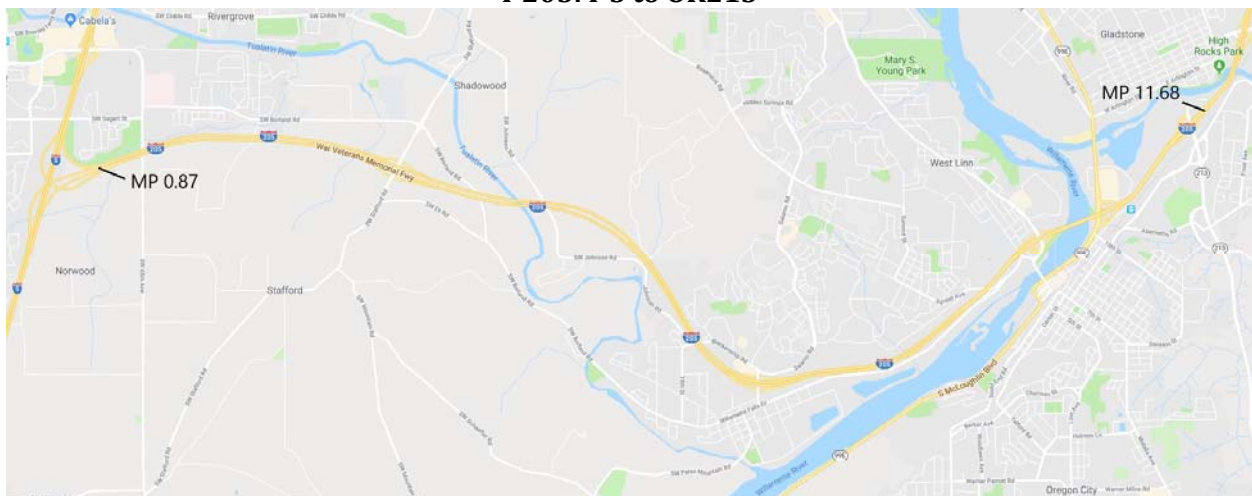
---

## BACKGROUND

Available project location maps and OTC request letters are included in this attachment to the staff report for reference for their applicable projects. Maps are included for:

- Key 19786 & 21400 – I-205: I-5 to OR213
- Key 19918 - Region 1: Bridge Screening and Rail Retrofit
- Key 18316 - SW Barbur Blvd: SW Caruthers St - SW Capitol Hwy

### **Key 19786 & 21400 I-205: I-5 to OR213**



## Key 19918

### Region 1: Bridge Screening and Rail Retrofit

#### Bridge, Locations, & estimated Dimensions:

Bridge #05054, US26 Ross Island Bridge over I-5, 993' Protective Fence



Bridge #06767A, US26 Ross Island Bridge over SE Grand Ave/SE McLoughlin Blvd, 227' Protective Fence

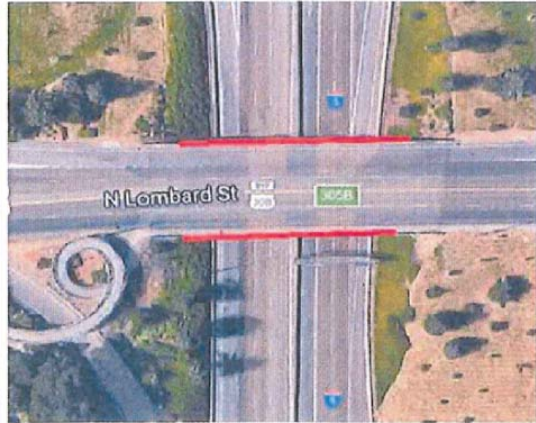


Protective screening to also cover the railroad tracks.

Bridge #08194, Hwy 3 over I-5, 372' Protective Fence  
Install protective fencing on the sidewalk side only.



Bridge #08996, N Lombard St over I-5, 286' Protective Fence



And bridge rail retrofit of Bridge #08996

Bridge #09007, N Alberta St over I-5, 235' Protective Fence

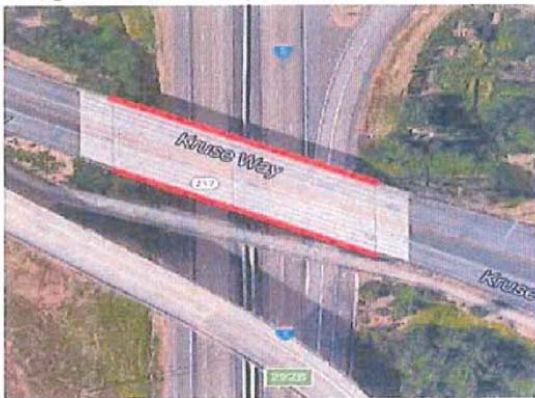


Bridge #13523, SE Washington St over I-205, 500' Protective Fence

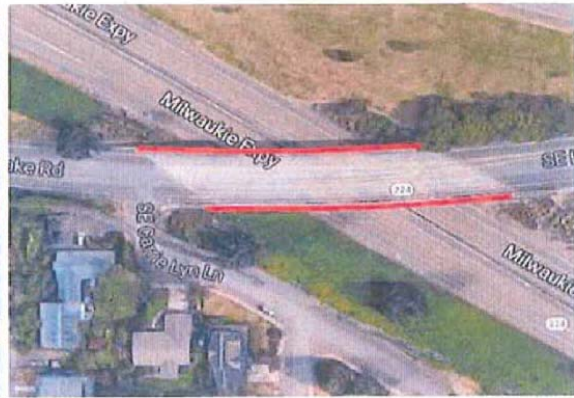


And bridge rail retrofit of Bridge #09007 and #13523

Bridge #09569, Kruse Way over I-5, 440' Protective Fence



Bridge #9623, SE Lake Rd over OR224, 392' Protective Fence



And bridge rail retrofit of Bridge #09569 and #9623



## Bridge # 02163A, NE 102<sup>nd</sup> Ave over I-84, Protective Fencing



Bridge # 09000, N Ainsworth St over I-5, Protective Fence



Bridge #13514L, RR Service Rd over I-84 and I-205 Protective Fence



Bridge # 09722, NW Helvetia Rd Conn over US26, Protective Fence



Bridge #13492, Hwy 174 over Hwy 26, 505' Protective Fence





**Key 18316**  
**SW Barbur Blvd: SW Caruthers St - SW Capitol Hwy**

