



G R E A T P L A C E S

Corridor

Portland • Sherwood • Tigard • Tualatin
Beaverton • Durham • King City
Washington County • ODOT • TriMet • Metro

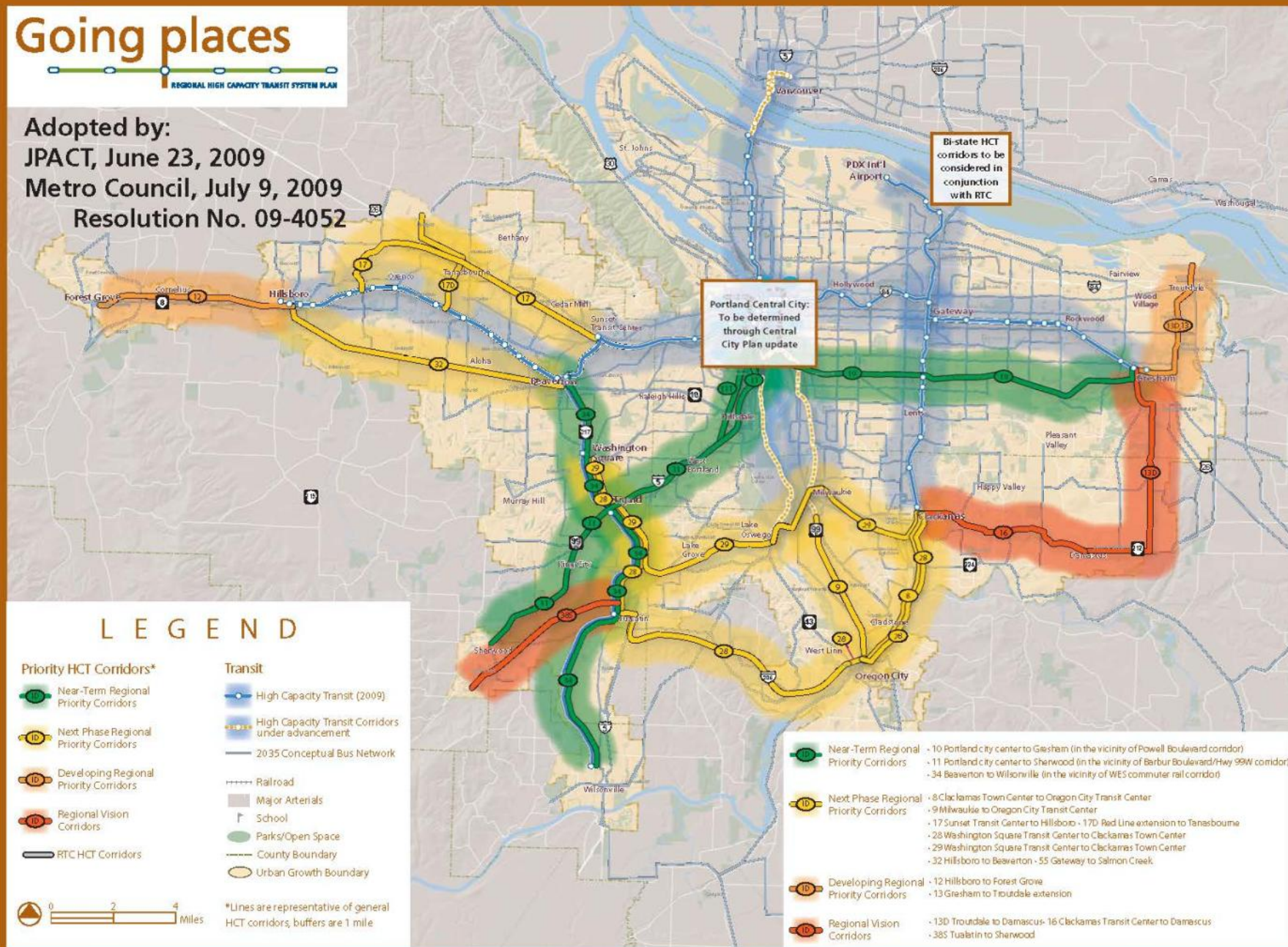
Southwest Corridor Light Rail Preferred Alternative **Resolution 18-4915**

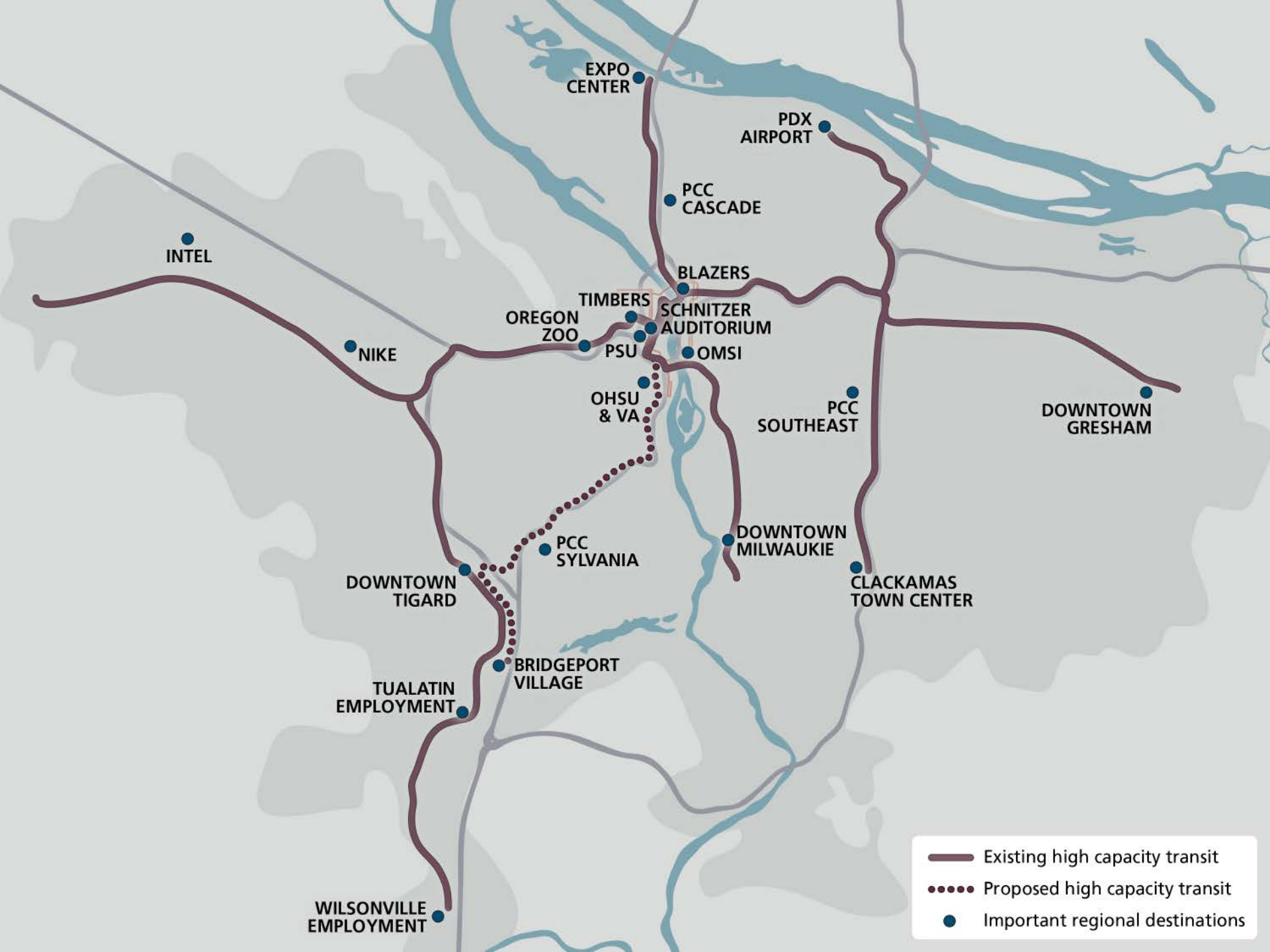
Metro Council
November 15, 2018

Going places

REGIONAL HIGH CAPACITY TRANSIT SYSTEM PLAN

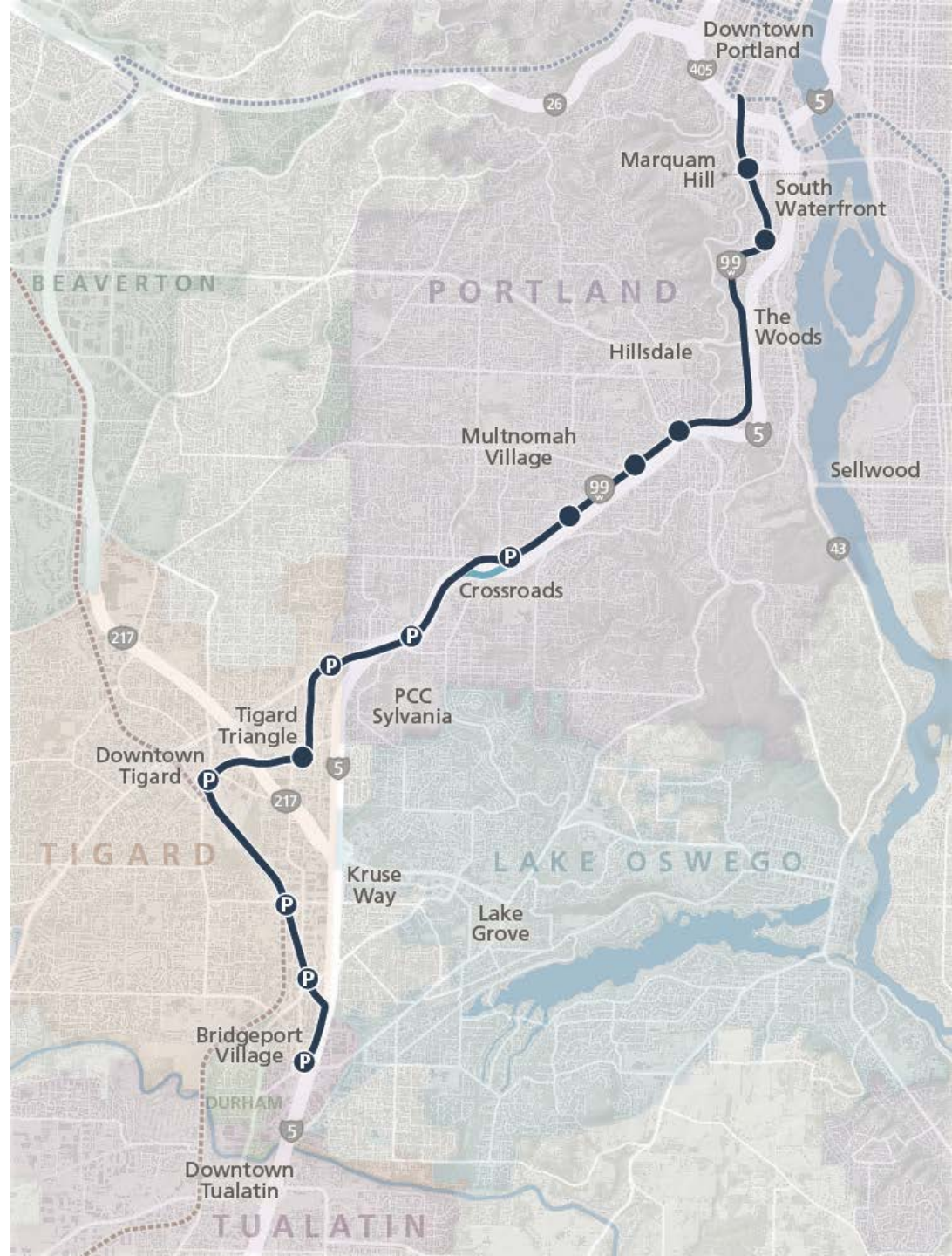
Adopted by:
JPACT, June 23, 2009
Metro Council, July 9, 2009
Resolution No. 09-4052



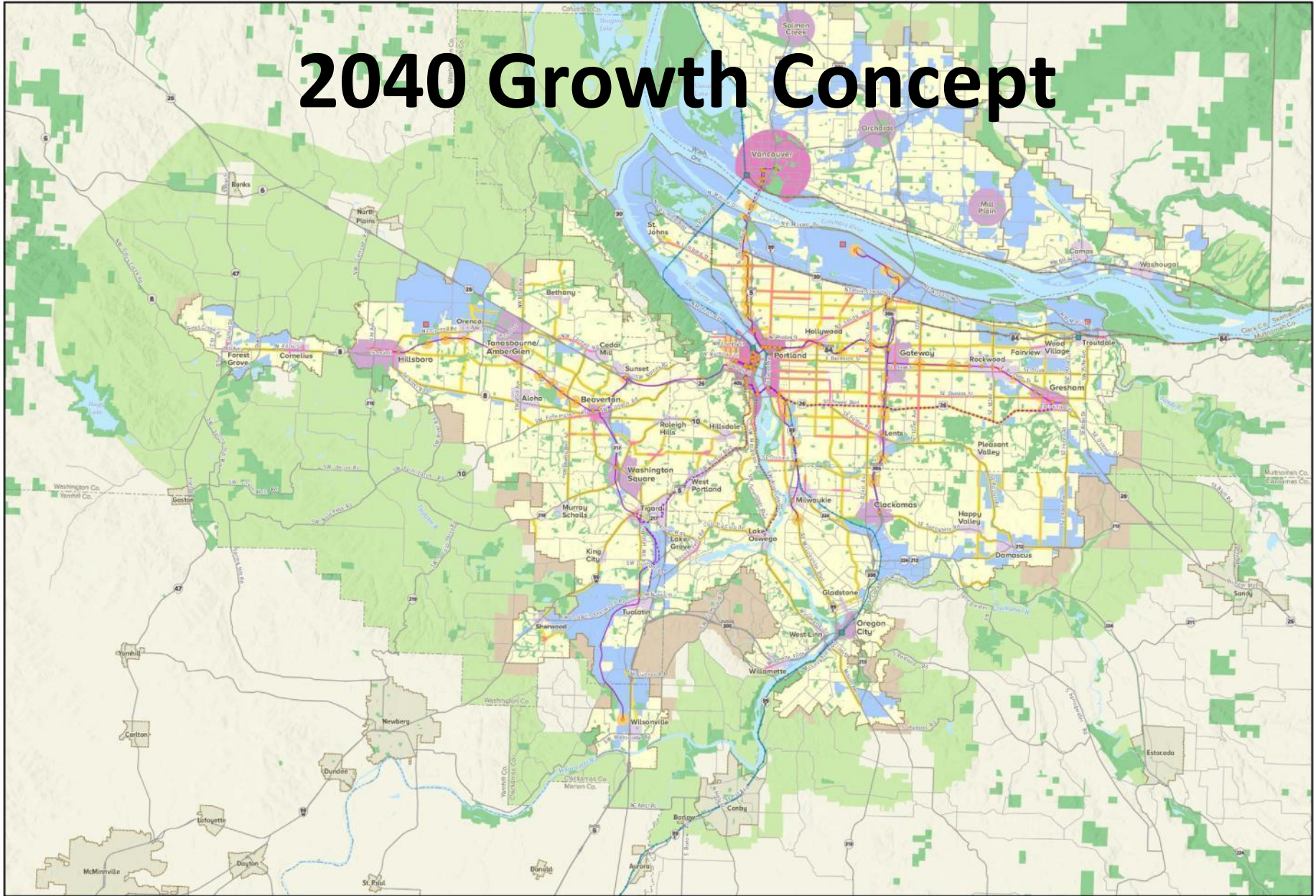


Proposed Project

- Extends Green line from PSU
- 12 miles
- 30 minutes
- 43,000 rides / day
- Downtown, OHSU, Hillsdale, Mult Vill, PCC, Tigard, Tualatin



2040 Growth Concept



2040 Growth Concept Map

September 2014

0 2 4 miles

This information on this map was derived from digital databases of Metro GIS. One use of this map is to show the location of the map. Metro cannot accept any responsibility for errors, omissions, or outdated information. There are no warranties, expressed or implied, regarding the accuracy or reliability of this map for a particular purpose, although it is the product, however, of Metro and its contractors.

The Metro 2040 Growth Concept defines the form of regional growth and development for the Portland metropolitan region. The Growth Concept was adopted in December 1995 through the Region 2040 planning and public involvement process. This concept is intended to provide long-term growth management of the region.

This map highlights elements of regional planning efforts including the 2035 Regional Transportation Plan that outlines investments in multiple modes of transportation, and a commitment to local policies and investments that will help the region better accommodate growth within its centers, corridors and employment areas.

For more information on these initiatives, visit: <http://www.oregonmetro.gov/2040>

- Central city
- Regional center
- Town center
- Station communities
- Main streets
- Corridors
- Employment land
- Parks and natural areas
- Neighborhood
- Rural reserve
- Urban reserve
- Urban growth boundaries
- Existing high capacity transit
- Planned high capacity transit
- Proposed high capacity transit tier 1
- Mainline freight
- High speed rail
- County boundaries
- Neighboring cities
- Airports
- Inter-city rail terminal



There could be 340,000 residents in
the Southwest Corridor by 2035—

70,000

more than today.

swcorridorplan.org



255,000

people:

If all the people who work in the Southwest Corridor
were their own city, they'd be bigger than Eugene.

swcorridorplan.org



13-17

hours of congestion a day:

That's how bad traffic will be on Interstate 5
between Portland and Tigard in 2035.

swcorridorplan.org

Inclusive Growth

Housing

- Metro bond: \$653M
- TriMet's commitment on housing
- Portland / Tigard Equitable Housing (funded with Metro grant)

SW Equitable Development Strategy

- Housing
- Workforce development
- Business stabilization
- Pilot programs





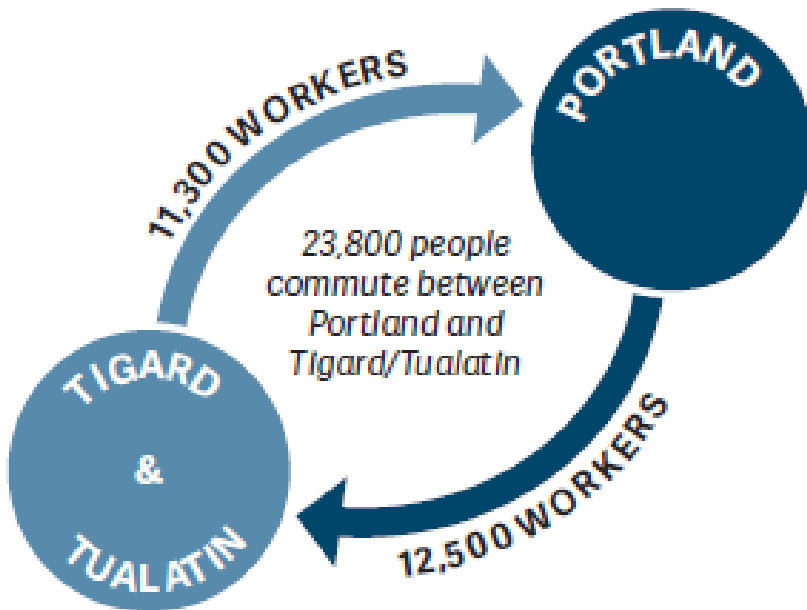
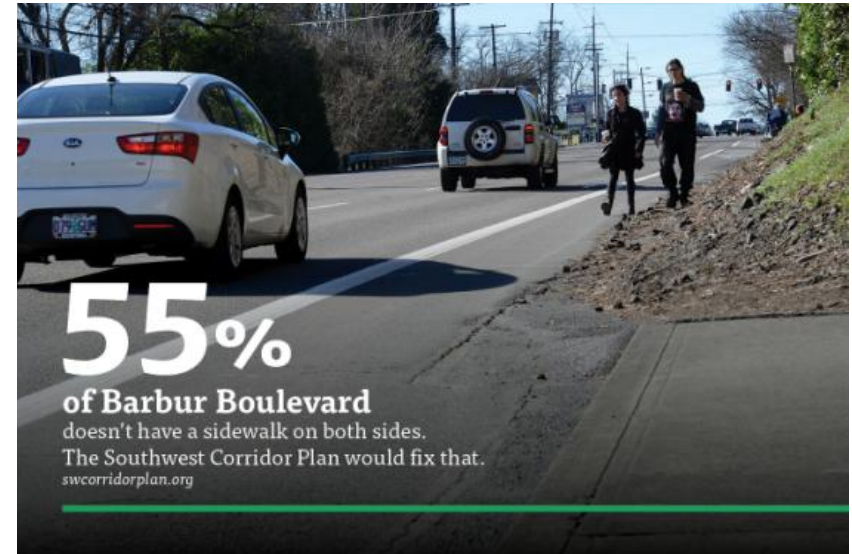
Project Benefits



43,000 riders on the line
on an average weekday in 2035



1 in 5 commuters on MAX
going southbound from downtown
during the 2035 PM rush hour



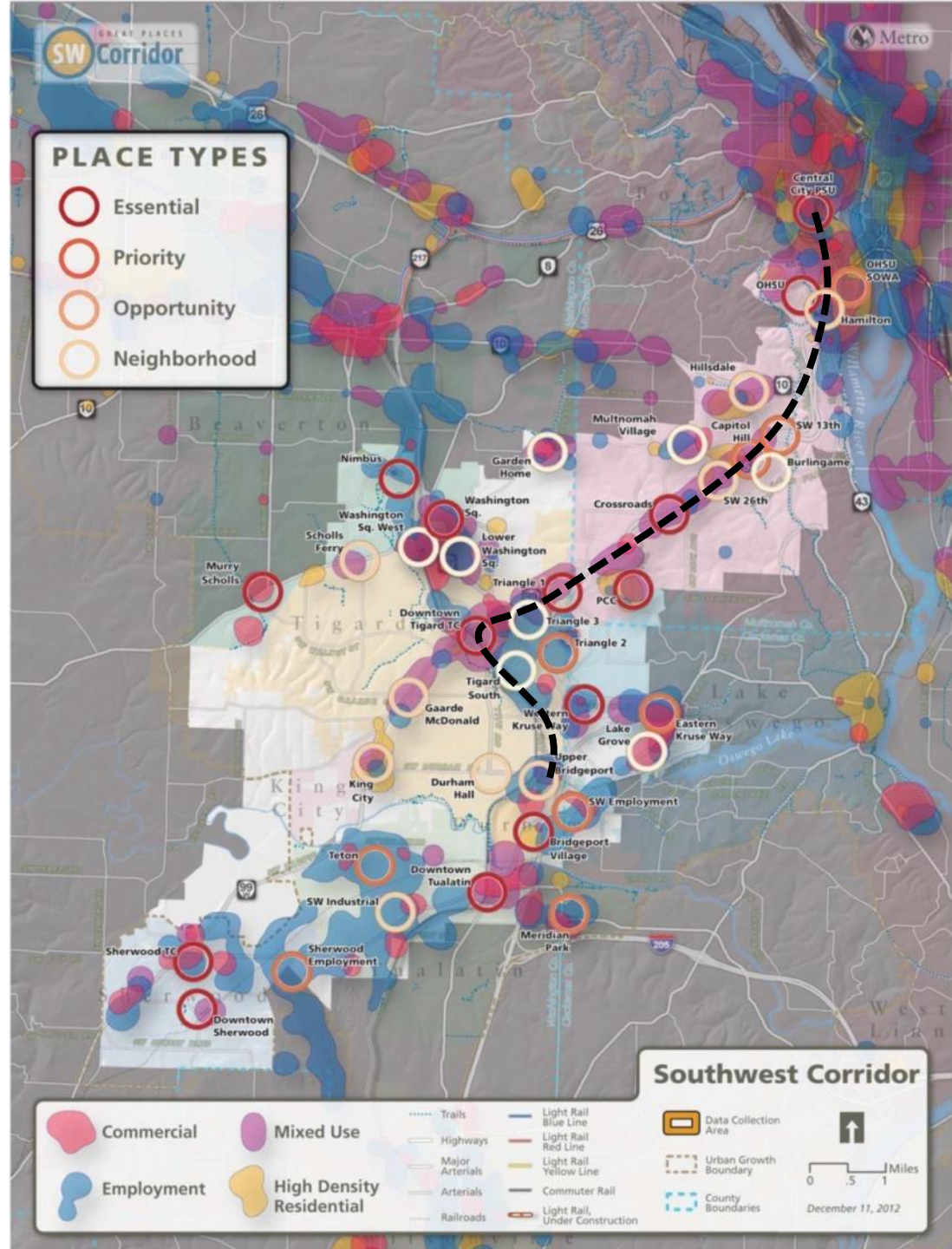
**Climate
action goals**

**Infill TOD in regional
town centers**



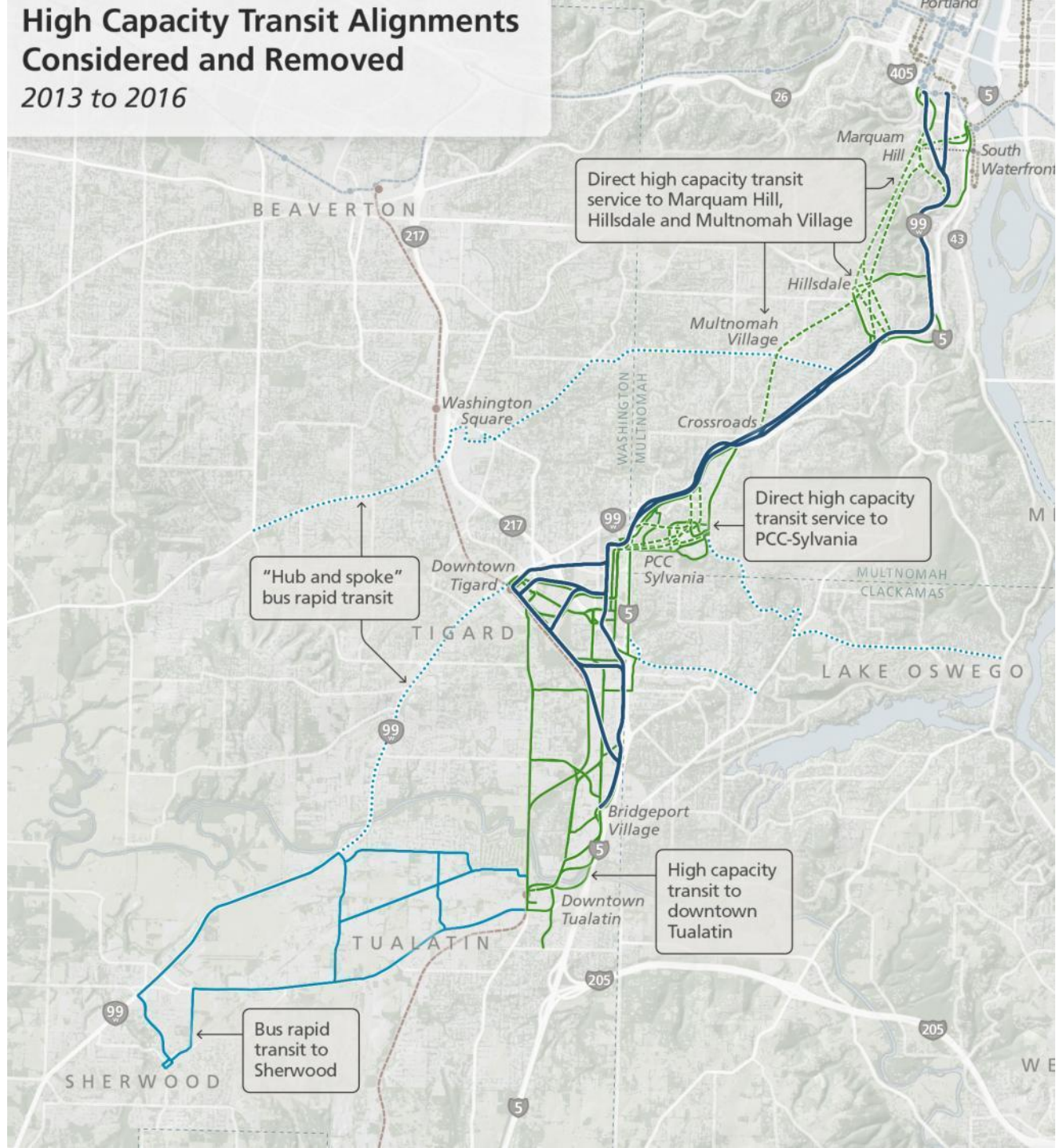
Planning started in
2011 with land use

Work directed by
Steering Committee



High Capacity Transit Alignments Considered and Removed 2013 to 2016

Over 60
alignment
options were
considered



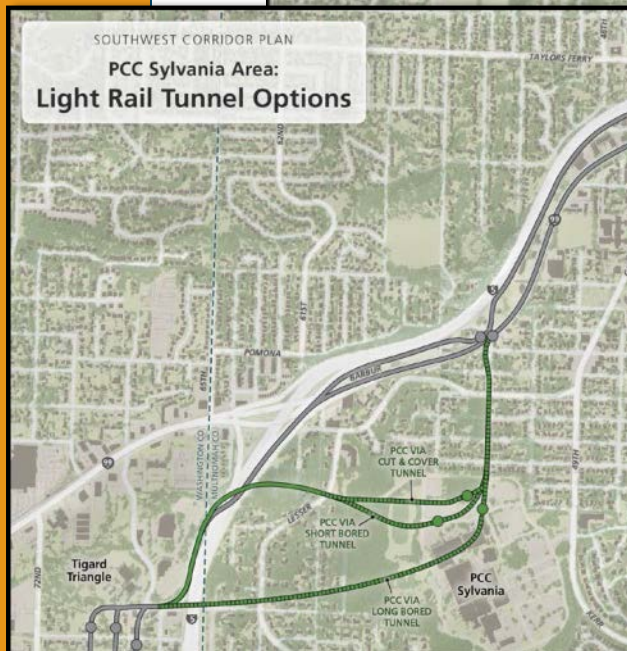
Southwest Corridor Public Involvement







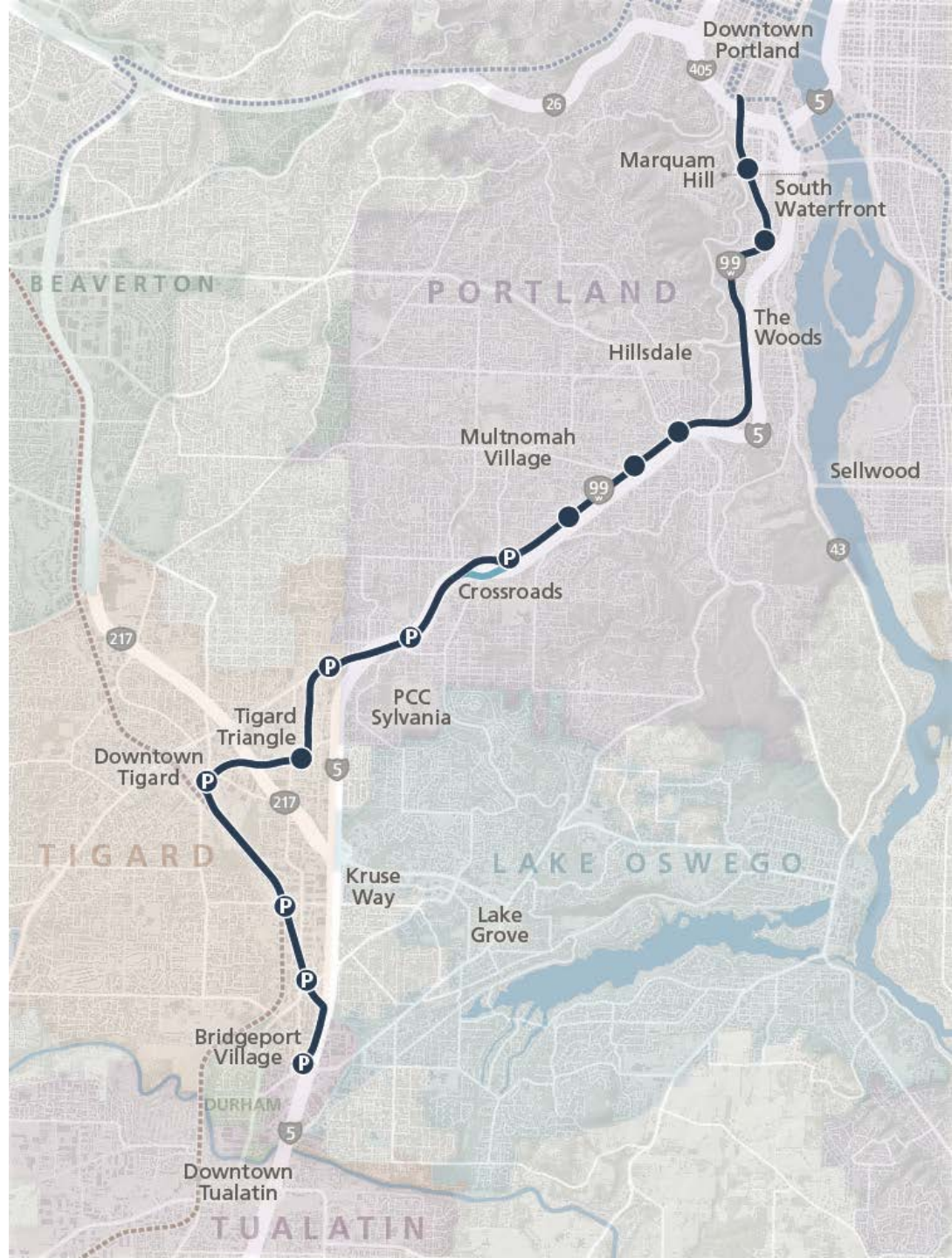
Major decisions included tunnels and BRT or light rail



Preferred Alternative recommended by SW Corridor Steering Committee

Based on...

- Purpose and Need
- Draft EIS
- Public + agency input
- FTA rating criteria



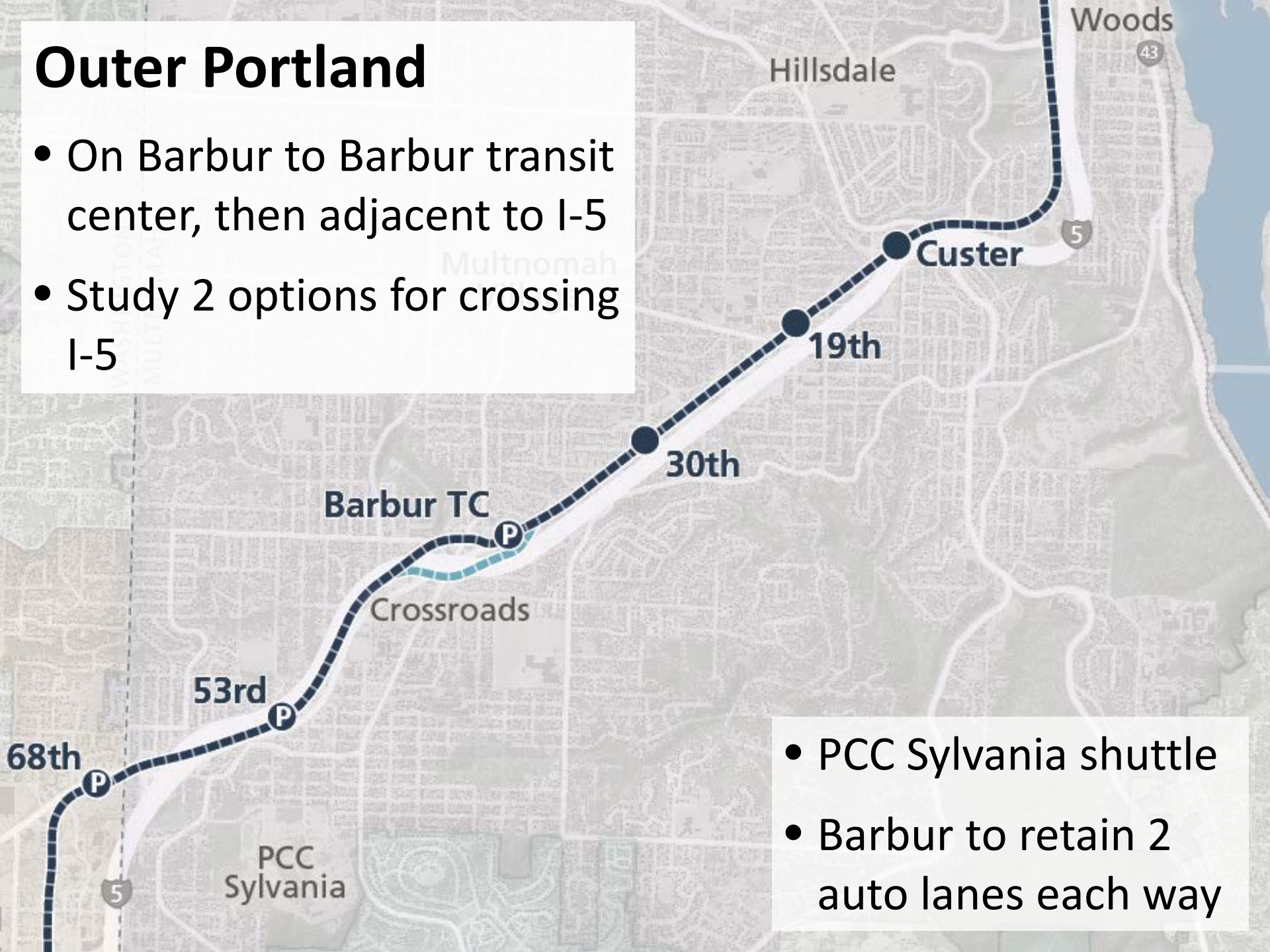
Inner Portland

- On Barbur Blvd.
- Marquam Hill connection (tbd)
- Shared transitway
- Replace Newbury and Vermont viaducts
- Continuous bike lanes & sidewalks on Barbur
- Separate Ross Island Bridgehead project



Outer Portland

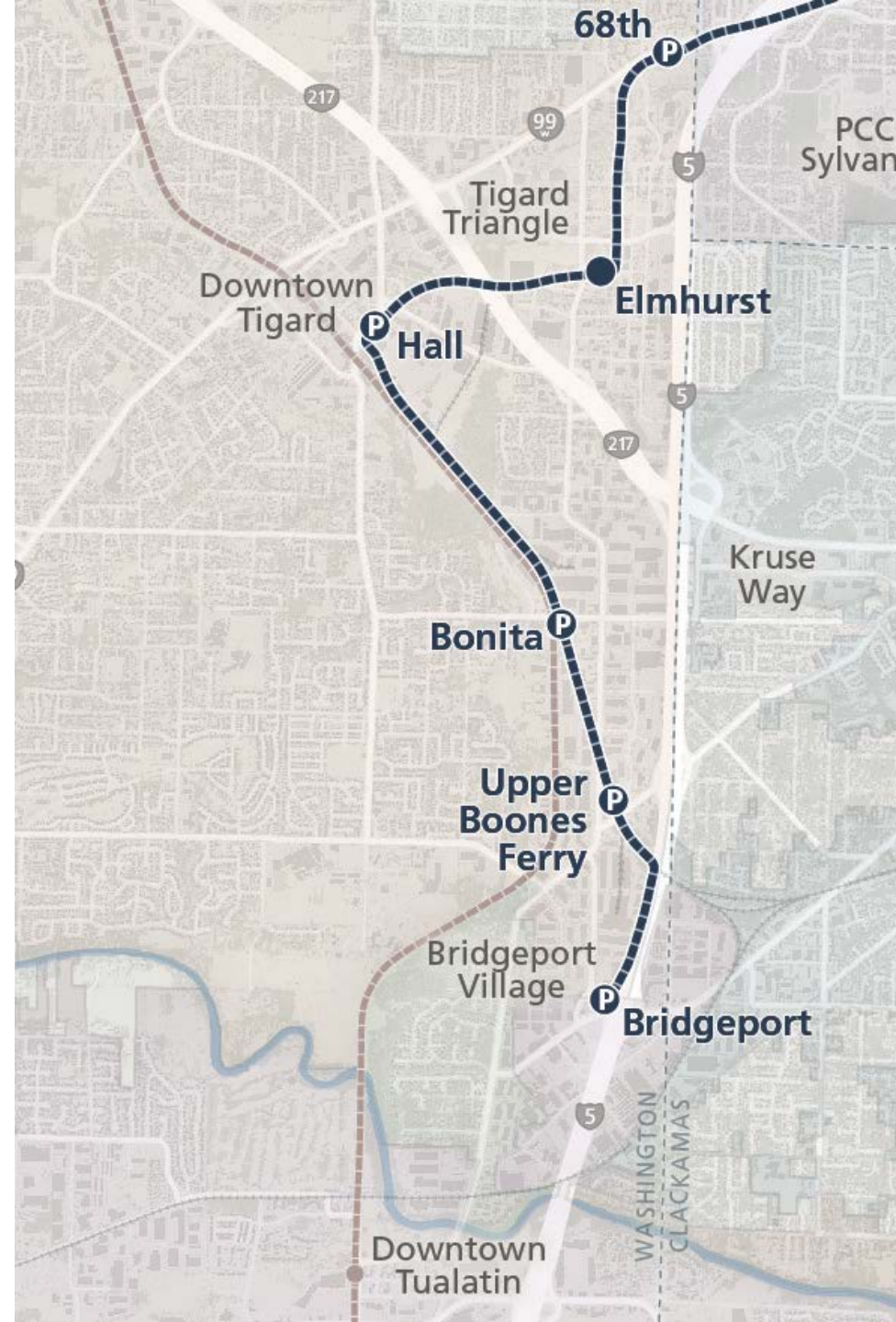
- On Barbur to Barbur transit center, then adjacent to I-5
- Study 2 options for crossing I-5



- PCC Sylvania shuttle
- Barbur to retain 2 auto lanes each way

Tigard / Tualatin

- Cross under Barbur/99W
- 70th Ave to Elmhurst
- Alignment and station east of Hall Blvd
- Hunziker O&M facility
- Adjacent to railroad
- Terminus at Bridgeport



Endorsements

- ✓ JPACT
- ✓ TPAC
- ✓ TriMet Board
- ✓ ODOT
- ✓ Washington County
- ✓ City of Portland
- ✓ City of Tigard
- ✓ City of Beaverton
- ✓ City of Tualatin

Next Steps

2019: Project Development

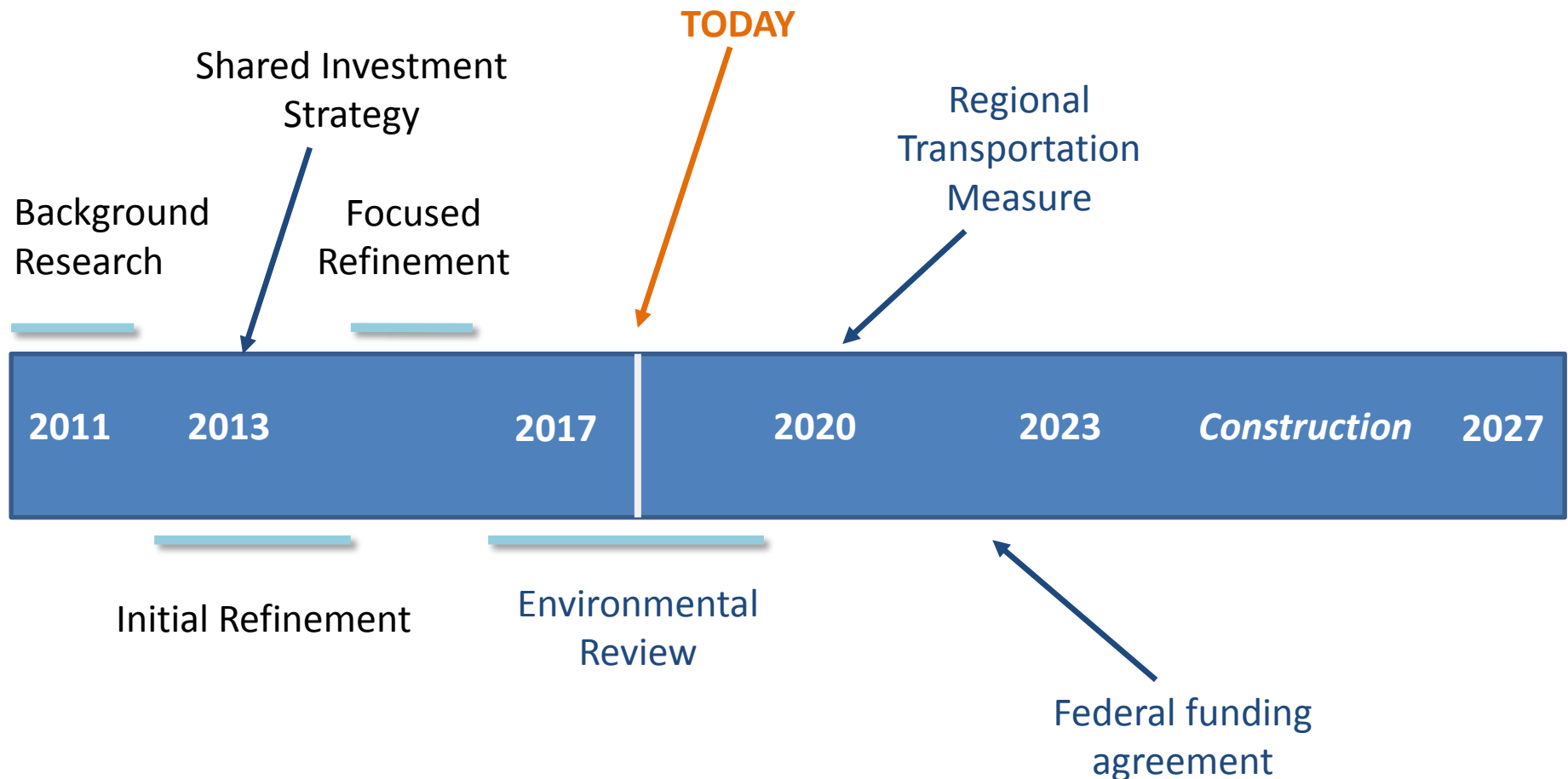
- New Steering Committee & CAC
- Public meetings & design workshops
- Update / advance designs
- Continue SWEDS
- Complete environmental review

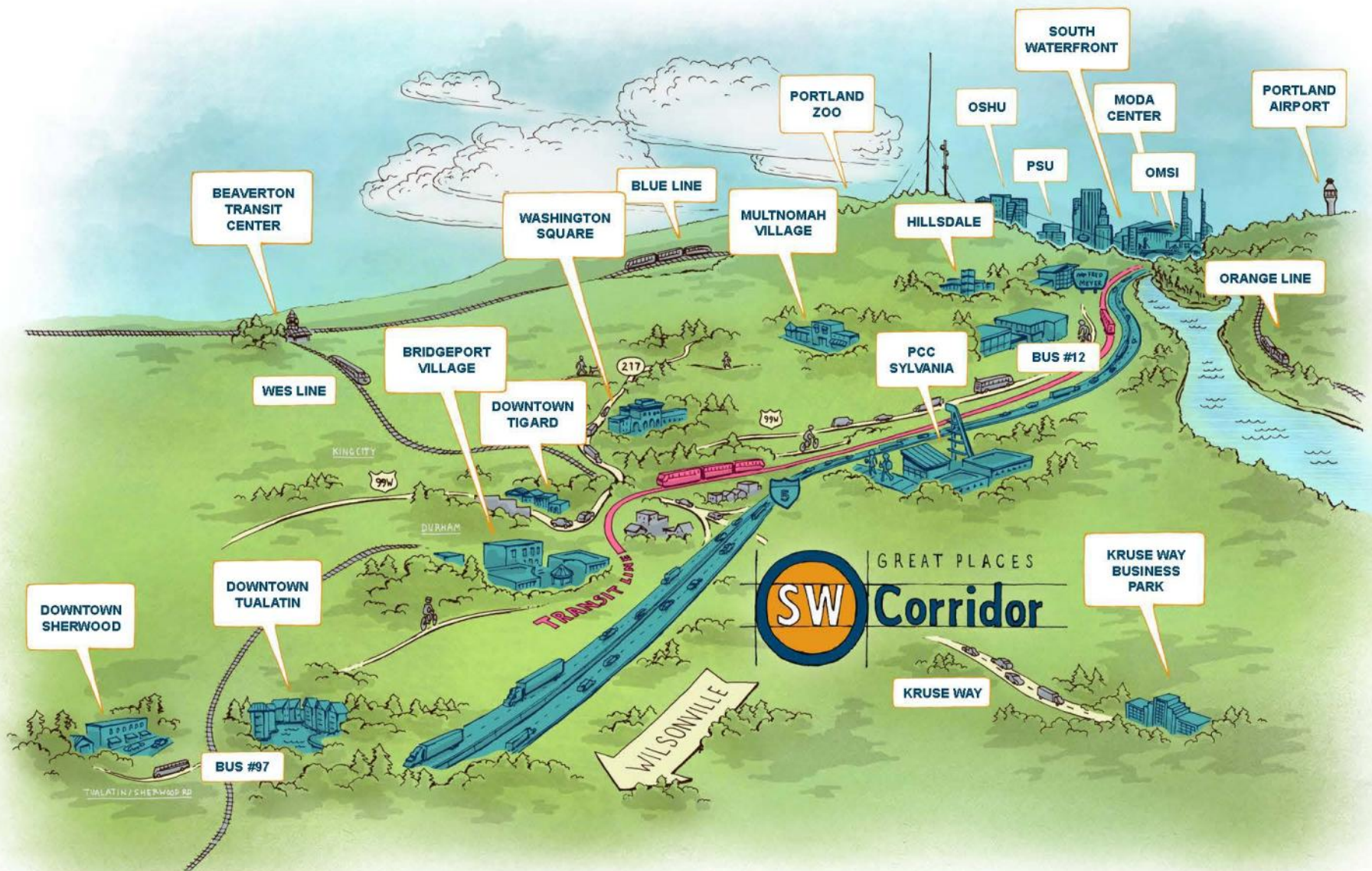
2020: Regional funding measure

2022: Secure federal funds

2027: Light rail opening

Overall LRT Schedule





BEAVERTON
TRANSIT
CENTER

PORTLAND
ZOO

SOUTH
WATERFRONT

PORTLAND
AIRPORT

BLUE LINE

OSHU

MODA
CENTER

PSU

OMSI

WASHINGTON
SQUARE

MULTNOMAH
VILLAGE

HILLSDALE

ORANGE LINE

BRIDGEPORT
VILLAGE

PCC
SYLVANIA

BUS #12

WES LINE

DOWNTOWN
TIGARD

KING CITY

DURHAM

DOWNTOWN
SHERWOOD

DOWNTOWN
TUALATIN

BUS #97

TUALATIN / SHERWOOD RD

KRUSE WAY
BUSINESS
PARK

KRUSE WAY



Steering Committee members (current and past): Craig Dirksen, Bob Stacey, Barbara Roberts, Carl Hosticka, Doug Kelsey, Neil McFarlane, Rian Windsheimer, Jason Tell, Roy Rogers, Dan Saltzman, Steve Novick, Amanda Fritz, Charlie Hales, John Cook, Lou Ogden, Ken Gibson, Al Reu, Denny Doyle, Gery Schirado, Keith Mays, Krisanna Clark, Bill Middleton

Staff: Matt Bihn, Michaela Skiles, Anthony Buczek, Eryn Kehe, Noelle Dobson, Alan Gunn, Yuliya Lee, Elissa Gertler, Brian Harper, Jeff Raker, Aaron Breakstone, Hope Whitney, Pat McLaughlin, Jamie Snook, Beth Cohen, Ramona Perrault, Dave Unsworth, Leah Robbins, Bernie Bottomly, Steve Witter, Jeb Doran, Amy Fandrich, Tom Markgraf, Jennifer Koozer, David Aulwes, Teresa Boyle, John Gillam, Art Pearce, Eric Engstrom, Ryan Curren, Caitlin Reff, Chris Deffebach, Andrew Singelakis, Mandy Putney, Megan Channel, Rory Renfro, Karyn Criswell, Lori Faha, Kenny Asher, Garet Prior, Zoe Monahan, Aquilla Hurd-Ravich, Alice Cannon, Julia Hajduk, Lauren Scott

Resolution No. 18-4915

- Endorses Steering Committee recommendation
- Direction to include in RTP and pursue MTIP amendments
- Thanks Steering Committee and CAC members and dissolves
- Directs staff to complete FEIS and support TriMet

