

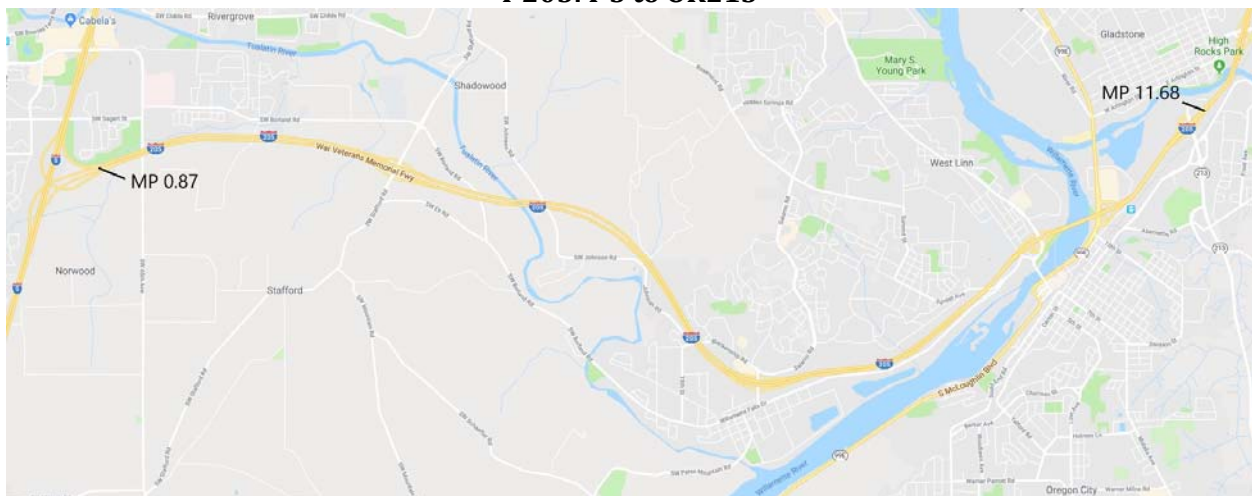
Date: Monday, November 5, 2018
From: Ken Lobeck, Funding Programs Lead, 503-797-1785
Subject: Attachment 1 to the November 2018 MTIP Formal Amendment Staff Report – Project Location Maps

BACKGROUND

Available project location maps and OTC request letters are included in this attachment to the staff report for reference for their applicable projects. Maps are included for:

- Key 19786 & 21400 – I-205: I-5 to OR213
- Key 19918 - Region 1: Bridge Screening and Rail Retrofit
- Key 18316 - SW Barbur Blvd: SW Caruthers St - SW Capitol Hwy

Key 19786 & 21400 I-205: I-5 to OR213



Key 19918

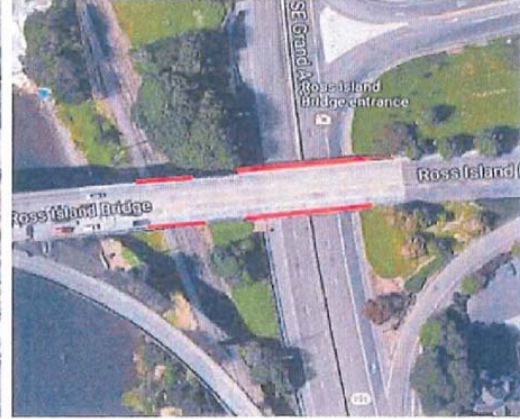
Region 1: Bridge Screening and Rail Retrofit

Bridge, Locations, & estimated Dimensions:

Bridge #05054, US26 Ross Island Bridge over I-5, 993' Protective Fence



Bridge #06767A, US26 Ross Island Bridge over SE Grand Ave/SE McLoughlin Blvd, 227' Protective Fence

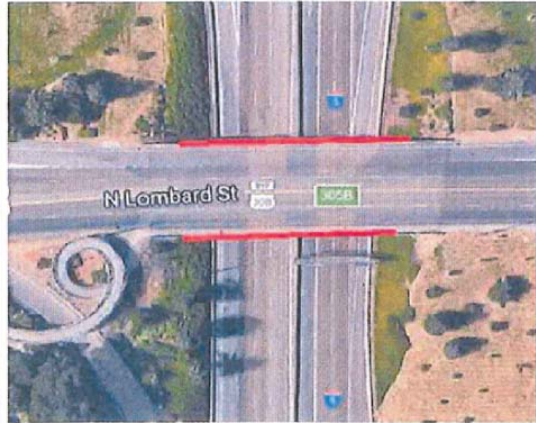


Protective screening to also cover the railroad tracks.

Bridge #08194, Hwy 3 over I-5, 372' Protective Fence
Install protective fencing on the sidewalk side only.



Bridge #08996, N Lombard St over I-5, 286' Protective Fence



And bridge rail retrofit of Bridge #08996

Bridge #09007, N Alberta St over I-5, 235' Protective Fence



Bridge #13523, SE Washington St over I-205, 500' Protective Fence

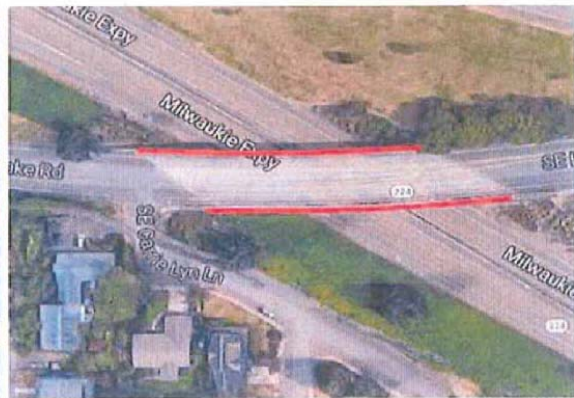


And bridge rail retrofit of Bridge #09007 and #13523

Bridge #09569, Kruse Way over I-5, 440' Protective Fence



Bridge #9623, SE Lake Rd over OR224, 392' Protective Fence



And bridge rail retrofit of Bridge #09569 and #9623

Bridge # 02163A, NE 102nd Ave over I-84, Protective Fencing



Bridge # 09000, N Ainsworth St over I-5, Protective Fence



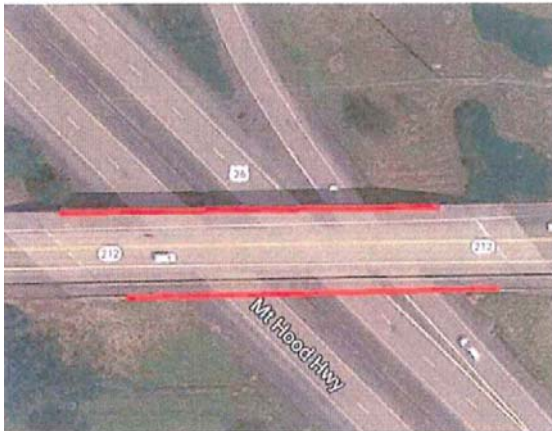
Bridge #13514L, RR Service Rd over I-84 and I-205 Protective Fence



Bridge # 09722, NW Helvetia Rd Conn over US26, Protective Fence



Bridge #13492, Hwy 174 over Hwy 26, 505' Protective Fence



Key 18316
SW Barbur Blvd: SW Caruthers St - SW Capitol Hwy

