



Metro

Parks and Nature Annual Report

November 2018

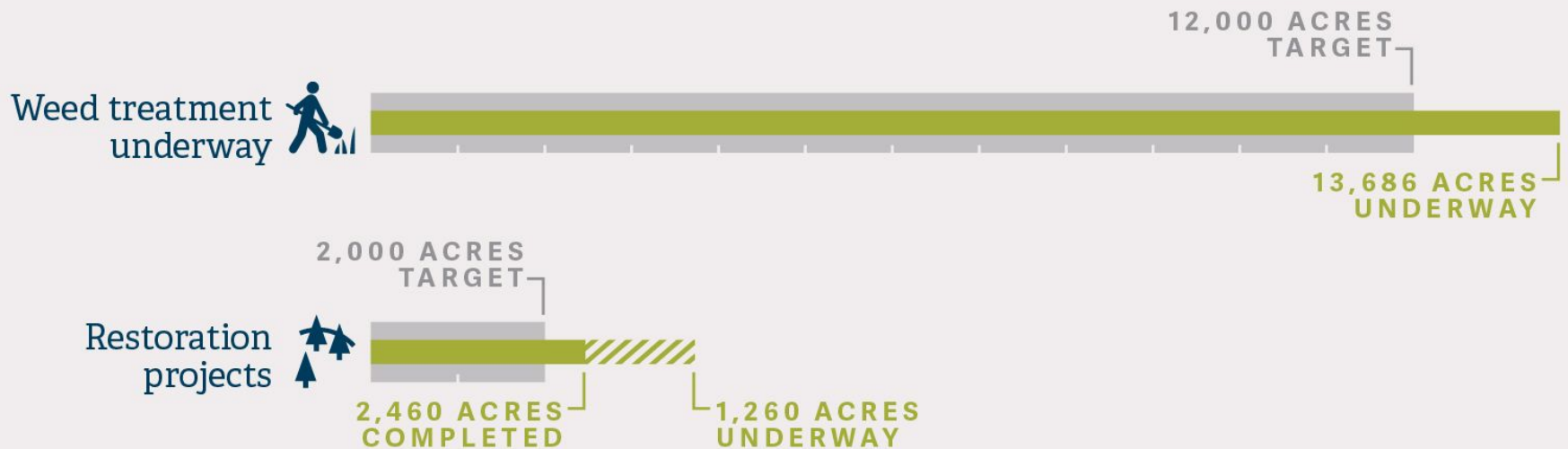


Metro

Five more years of levy funding



Metro



Restoration and maintenance

**334,000
native plants
in the ground
last winter**



Metro





Access to nature

36

PROJECTS
COMPLETED

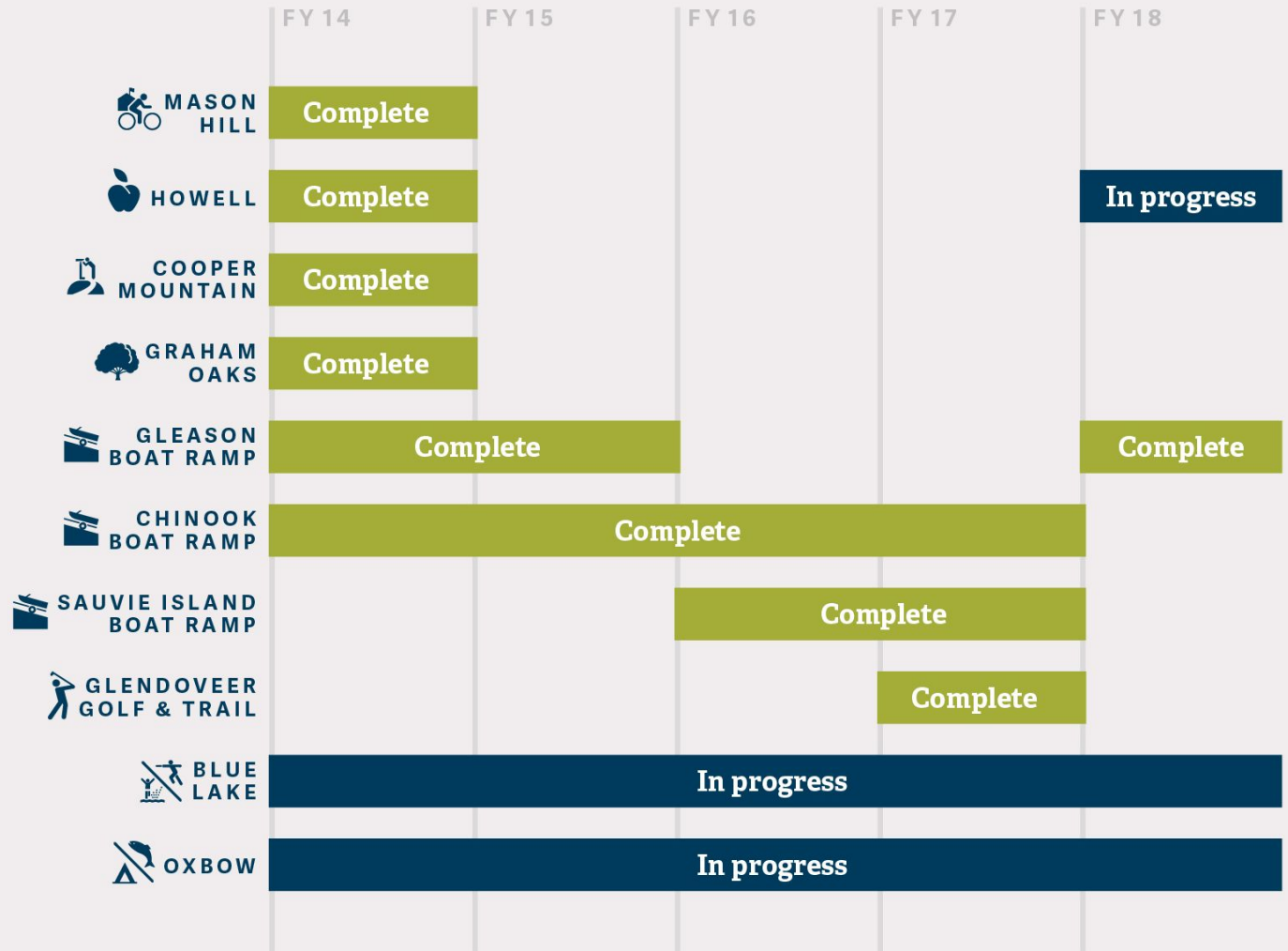
3

PROJECTS
UNDERWAY

5

PLANNED FUTURE
PROJECTS

Project sites



Park improvements



Metro



Oxbow Welcome Center



Metro

Nature education

FY 2018



6,568

Youth participants
in nature education
programs



22

Sites where nature
education programs
took place

Volunteers

FY 2018



12,088

Total volunteer hours
at parks and natural areas



48

Sites where
volunteers worked
Target = 33 sites

Nature education and volunteering



Metro



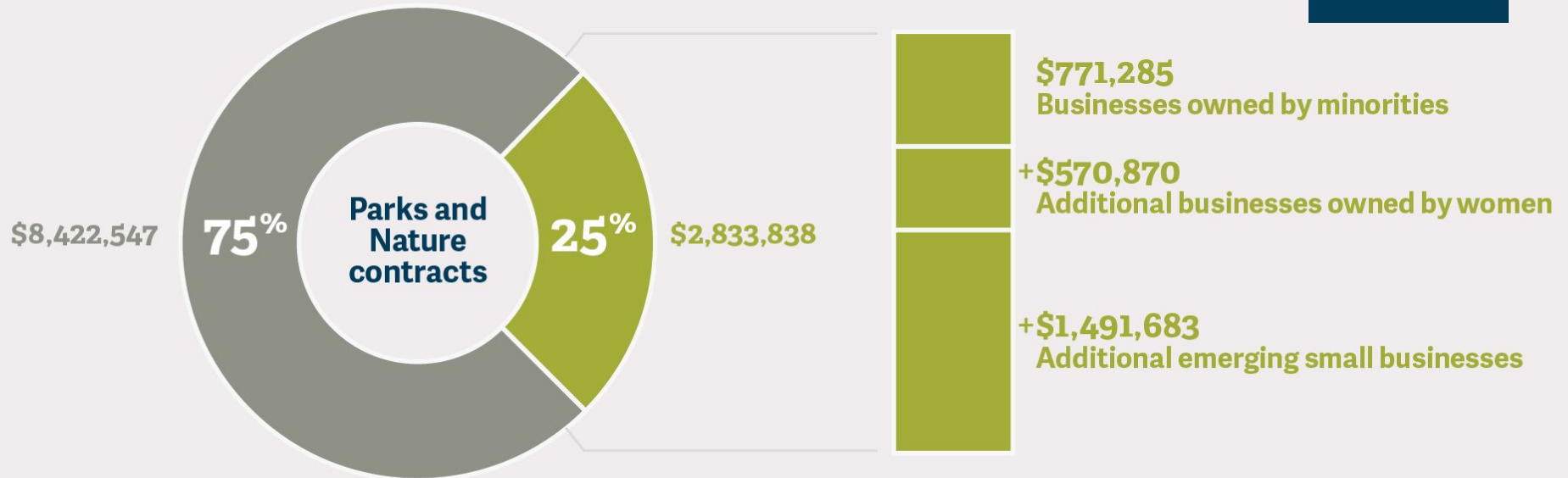
Broughton Beach volunteer clean-up



Metro



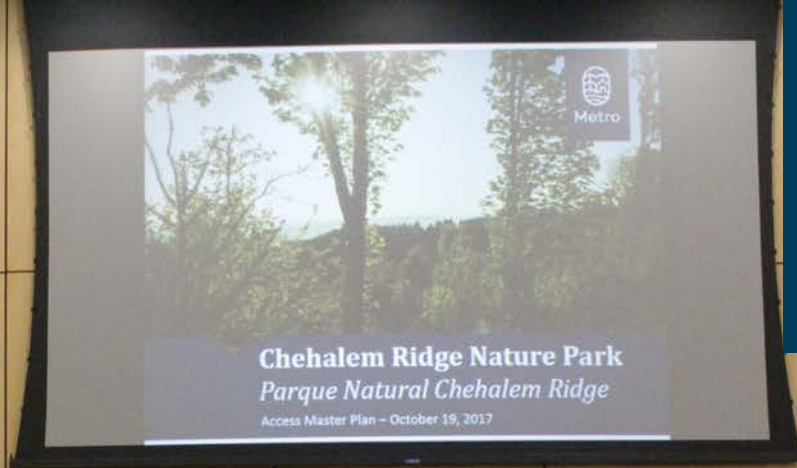
Community investments



Diversity, equity and inclusion



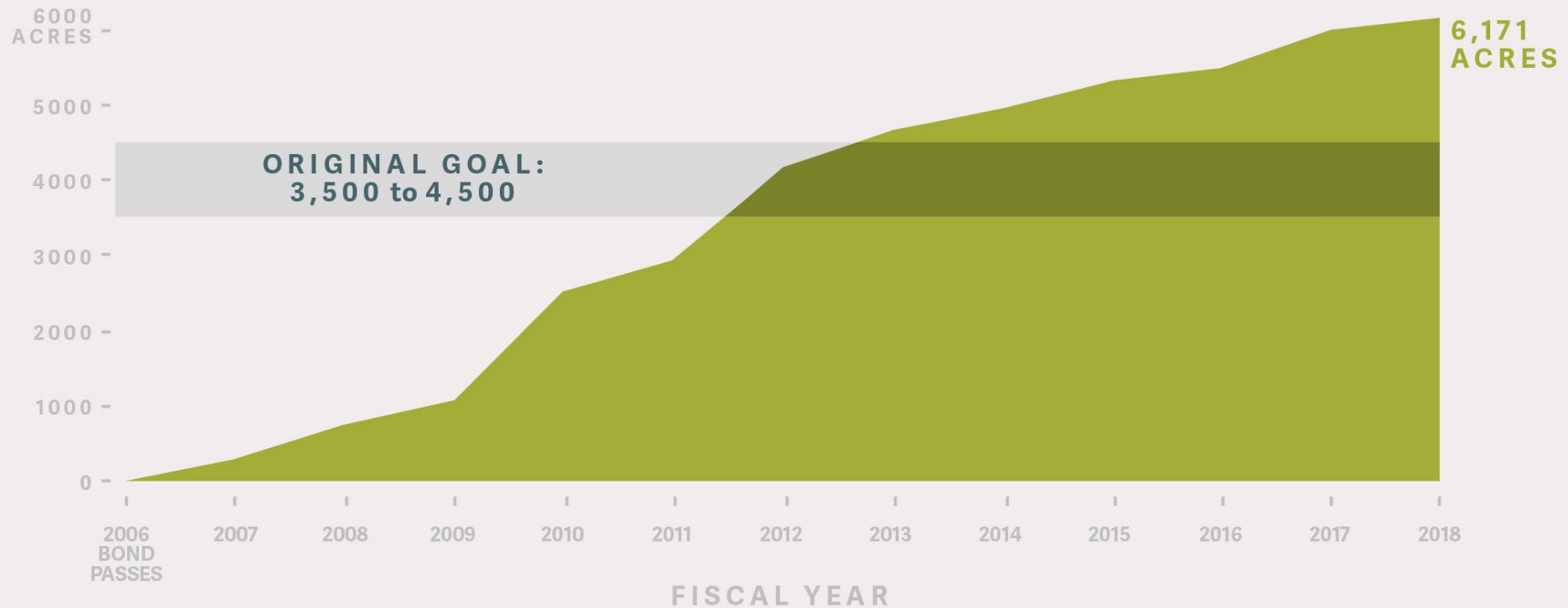
Metro



Chehalem Ridge Nature Park



Metro



Protecting land



Metro

Burials

FY 2018

↑
144

Casket and urn burials

Burial purchases

FY 2018

👤
43

Advance purchases

Burial rights

Historic cemeteries



Metro



Honoring veterans at Metro cemeteries

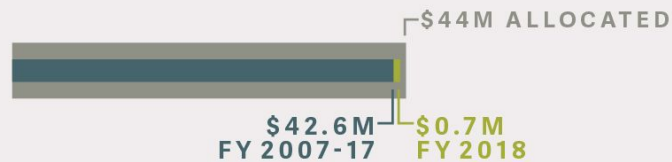


Metro

Land acquisition*



Local share

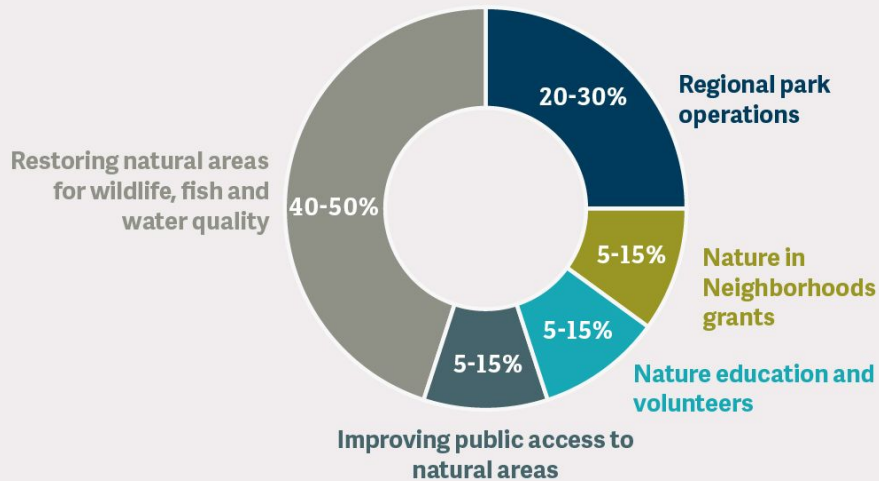


Nature in Neighborhoods capital grants**

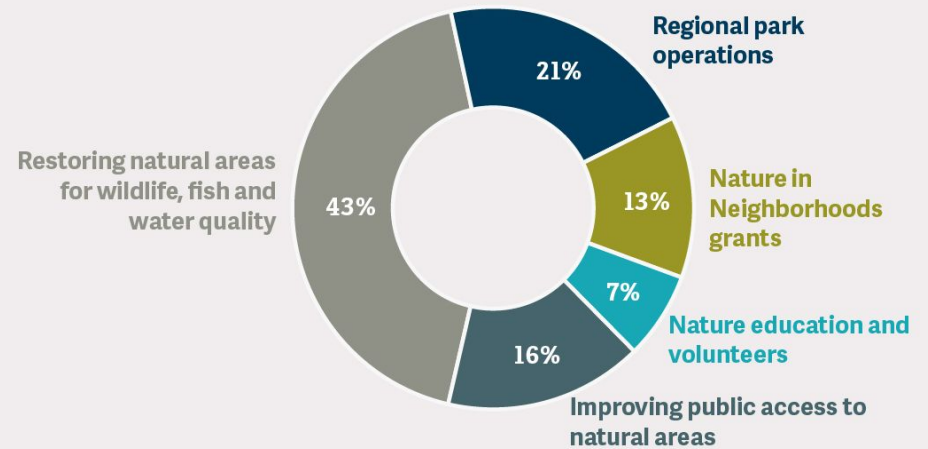


2006 natural areas bond spending

Promised to voters



Actual levy spending THROUGH JUNE 2018



Promises made, promises kept

oregonmetro.gov

