



Metro

Disposal RFP Evaluation Criteria Weighting for Public Transfer Stations

August 1, 2017



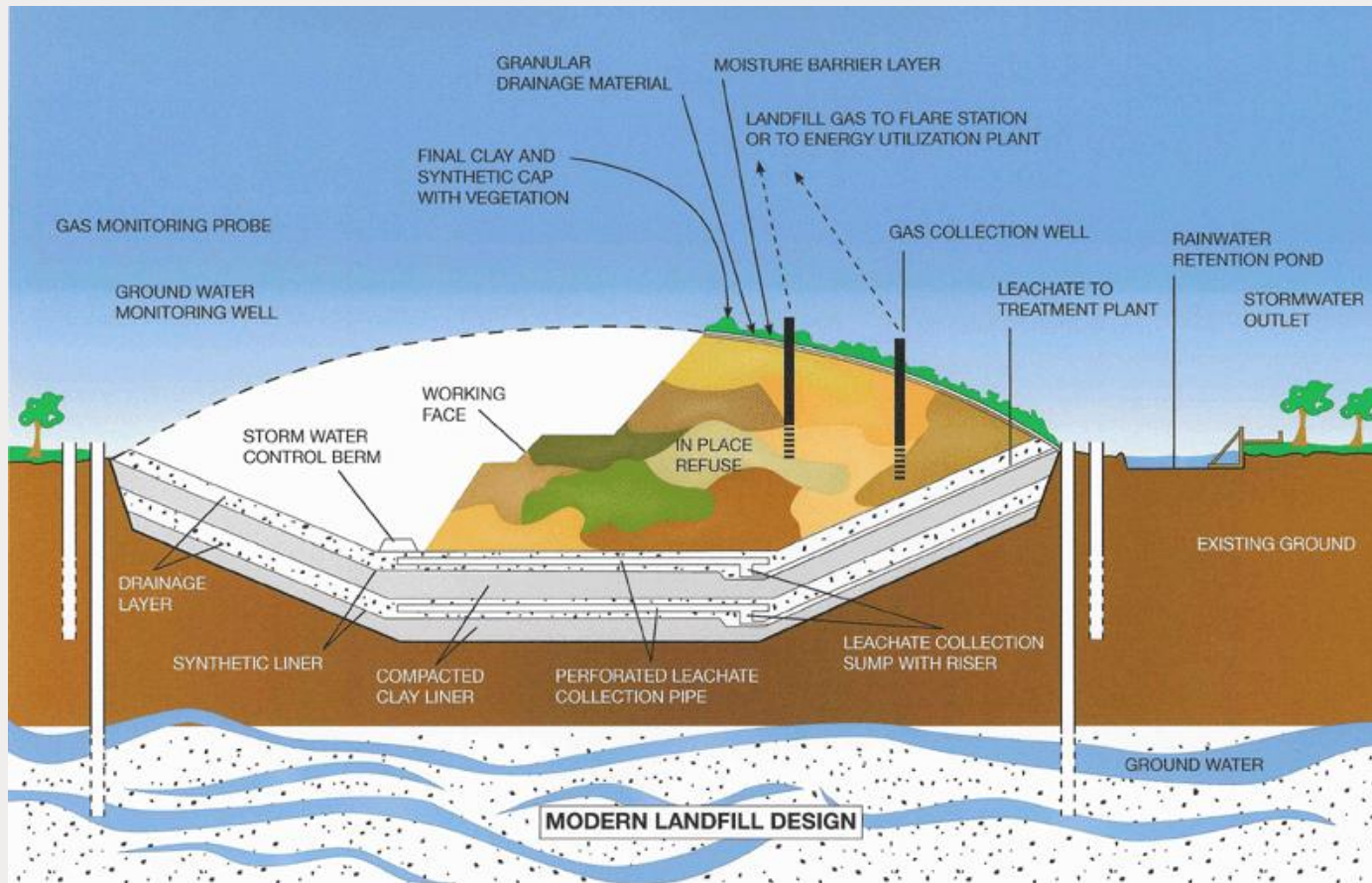
Agenda

- Introduction
- Landfills 101
- Review of Four Qualified Landfills
- Public Benefits and Evaluation Criteria
- Discussion on Weighting of Criteria

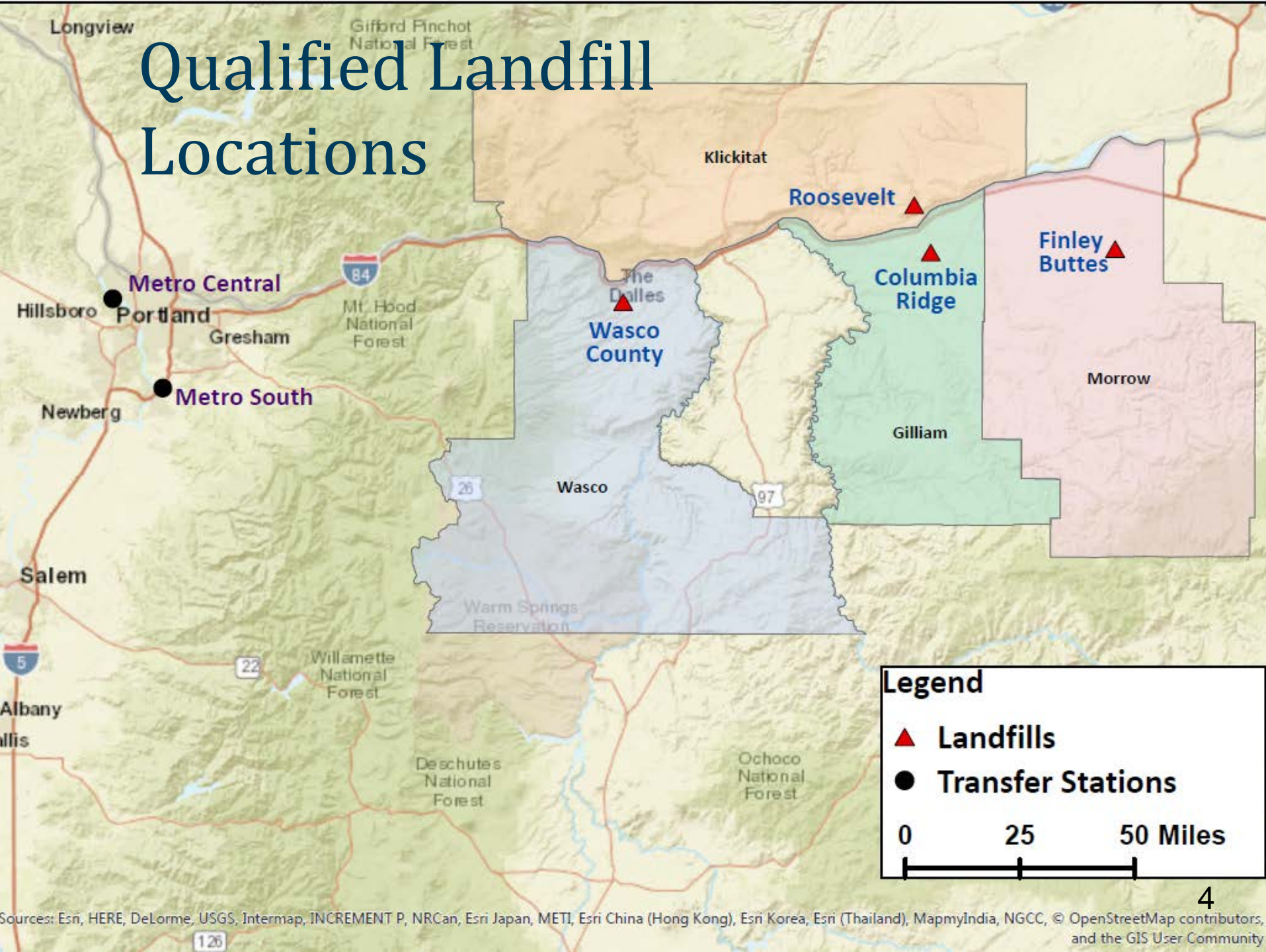
Evolution of Waste Disposal Practices



Modern Landfills



Qualified Landfill Locations



Columbia Ridge



Finley Buttes



Roosevelt



Wasco County



Focus of Today's Discussion

Disposal RFP

Transportation RFP

Public Benefits and Disposal Criteria

Public Benefits of Regional Solid Waste System	2017 Disposal RFP Evaluation Criteria
Protect people's health	Environmental Impacts
Protect the environment	
Keep the commitment to the highest and best use of materials	
Get good value for the public's money	Cost
Be adaptive and responsive in managing materials	Operational Considerations, Experience, Reduce Risk to Metro
Ensure services are available to all types of customers	Community and Diversity

Key Attributes of Disposal Criteria

Environmental	Operations	Community and Diversity	Cost
Permit compliance	Transport interface	Workforce diversity	Formula based on low cost proposal
Sustainable practices	Contingency plans	Wages and benefits	
Landfill gas management	Hours and days of operation	COBID subcontractors and suppliers	
	Safety	Community relations	
	Emergency procedures		
	Financial strength		

Handout Points for Disposal Criteria

Scratch Pad:

Your Thoughts About Point Allocation

Criteria	Points
Environmental Impacts	
Cost	
Operational Approach, Experience, and Reduction of Risk to Metro	
Community and Diversity	
Total	100

2017 Disposal RFP Evaluation

Staff Recommendation

Criteria	Points
Environmental Impacts	15
Cost	50
Operational Approach, Experience, and Reduction of Risk to Metro	15
Community and Diversity	20
Total	100

Questions for Council

- Does Council support the proposed evaluation criteria and point allocation?
- Does Council have any other comments or suggestions about the procurement?

oregonmetro.gov

