

HB2047 Urban and Rural Reserves
Washington County Area - Attachment 1
August 2017

The information on this map was derived from digital databases on Metro's GIS. Care was taken in the creation of this map. Metro cannot accept any responsibility for errors, omissions, or positional accuracy. There are no warranties, expressed or implied, including the warranty of merchantability or fitness for a particular purpose, accompanying this product. However, notification of any errors are appreciated.

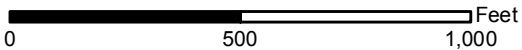
Existing Reserves

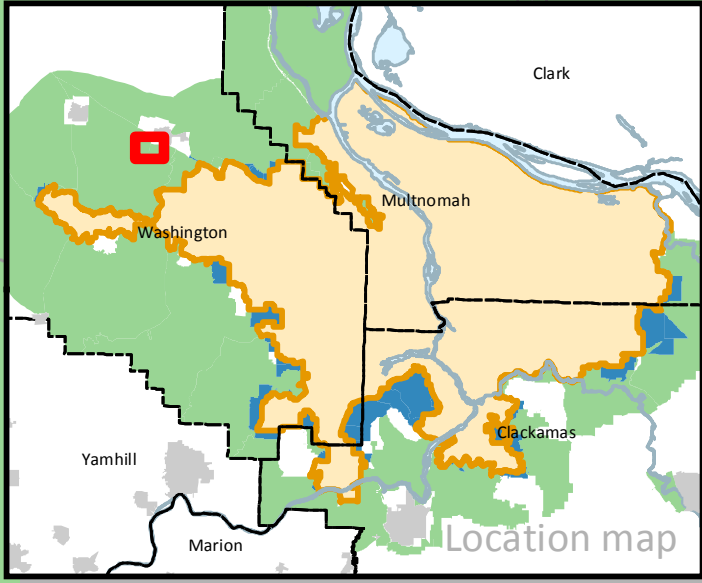
- Rural Reserve
- Urban Reserve

Reserve Changes

- Rural to Urban
- Undesignated to Urban
- Undesignated to Rural
- Urban to Undesignated

- Metropolitan Portland Urban Growth Boundary
- Taxlots







HB2047 Urban and Rural Reserves
Washington County Area - Attachment 2
August 2017




The information on this map was derived from digital databases on Metro's GIS. Care was taken in the creation of this map. Metro cannot accept any responsibility for errors, omissions, or positional accuracy. There are no warranties, expressed or implied, including the warranty of merchantability or fitness for a particular purpose, accompanying this product. However, notification of any errors are appreciated.

Existing Reserves

-  Rural Reserve
-  Urban Reserve

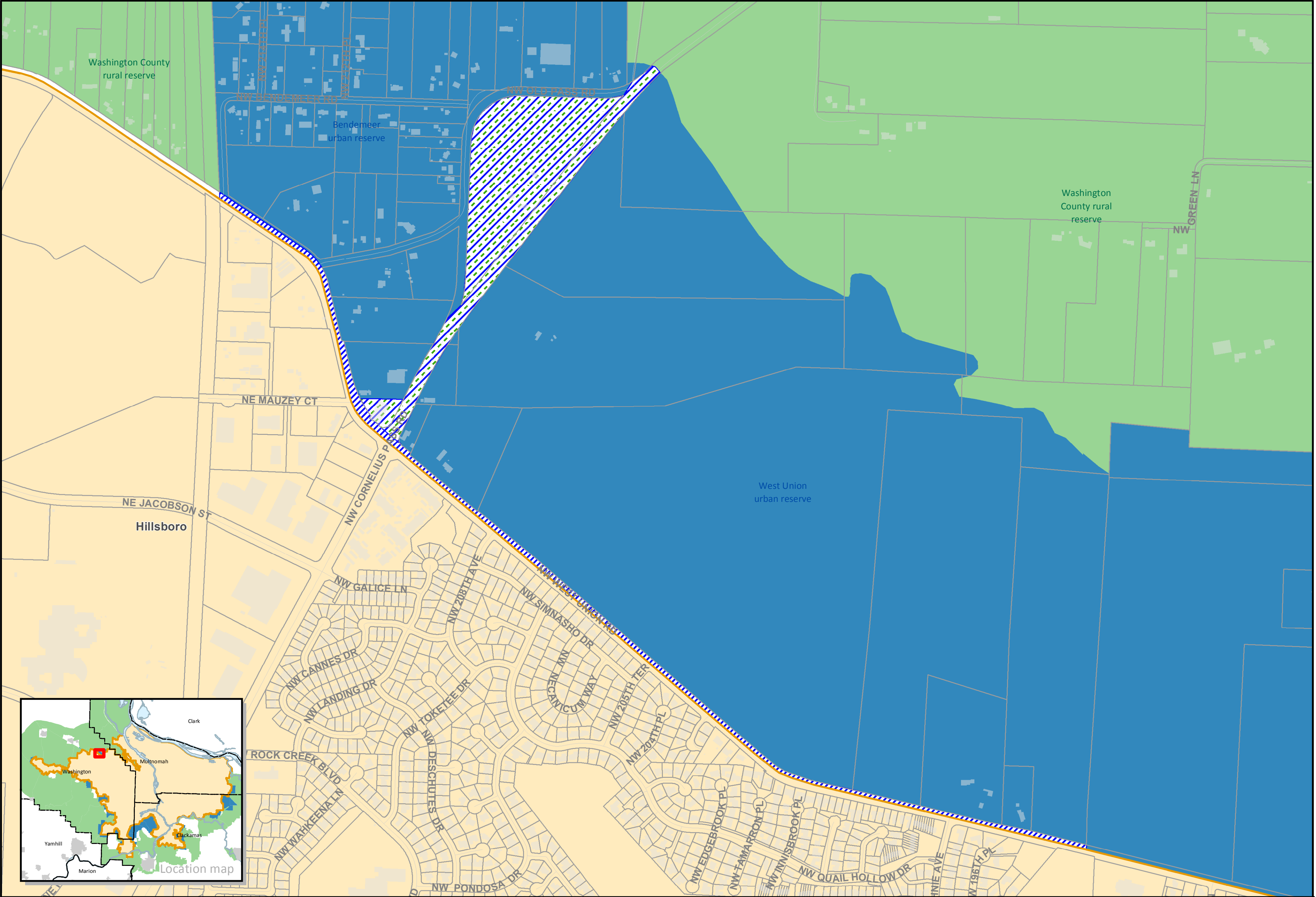
Reserve Changes

-  Rural to Urban
-  Undesignated to Urban
-  Undesignated to Rural
-  Urban to Undesignated

-  Metropolitan Portland Urban Growth Boundary
-  Other Urban Growth Boundary
-  Taxlots



0 500 1,000 Feet



HB2047 Urban and Rural Reserves
Washington County Area - Attachment 4
August 2017

The information on this map was derived from digital databases on Metro's GIS. Care was taken in the creation of this map. Metro cannot accept any responsibility for errors, omissions, or positional accuracy. There are no warranties, expressed or implied, including the warranty of merchantability or fitness for a particular purpose, accompanying this product. However, notification of any errors are appreciated.

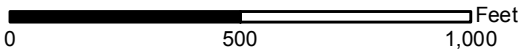
Existing Reserves

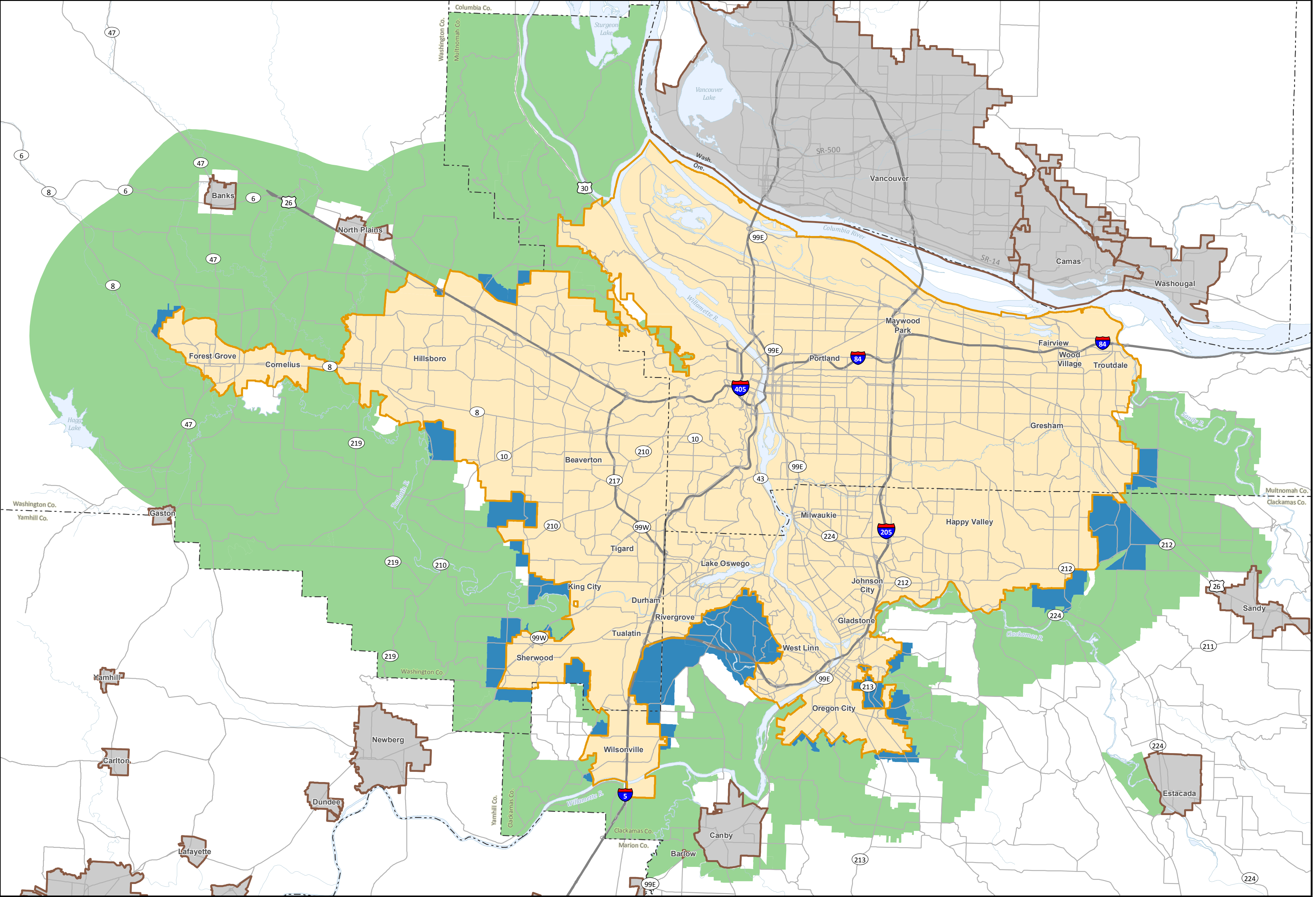
- Rural Reserve
- Urban Reserve

Reserve Changes

- Rural to Urban
- Undesignated to Urban
- Undesignated to Rural
- Urban to Undesignated

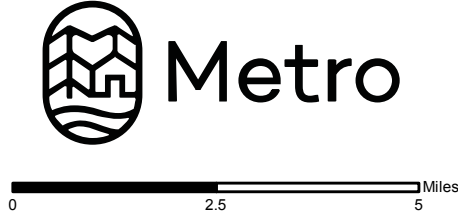
- Metropolitan Portland Urban Growth Boundary
- Taxlots





Title 14, Urban Growth Boundary
August 2017
Attachment 5

- Metropolitan Portland Urban Growth Boundary
- Other Urban Growth Boundary
- Rural Reserves
- Urban Reserves
- County Boundaries



The information on this map was derived from digital databases on Metro's GIS. Care was taken in the creation of this map. Metro cannot accept any responsibility for errors, omissions, or positional accuracy. There are no warranties, expressed or implied, including the warranty of merchantability or fitness for a particular purpose, accompanying this product. However, notification of any errors are appreciated.