

# Transport RFP Evaluation Criteria Weighting for Public Transfer Stations

July 18, 2017



Metro

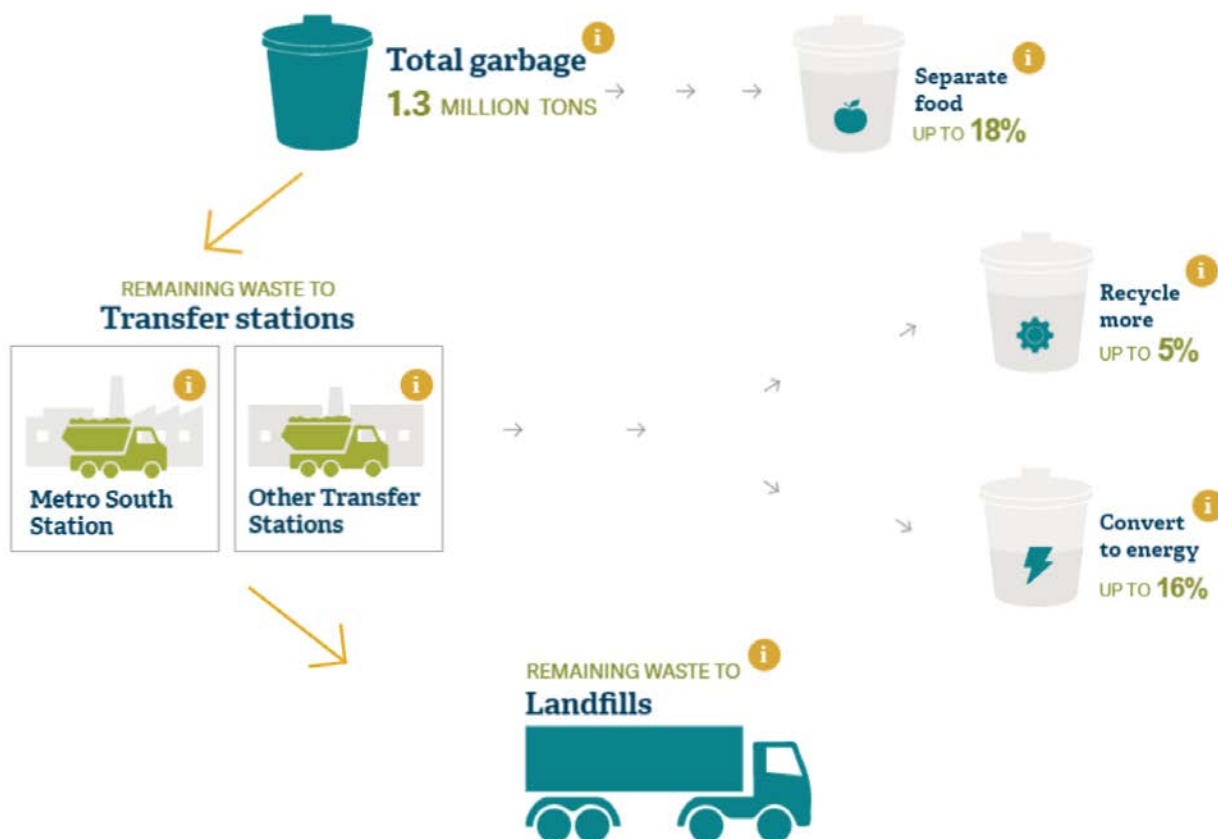


# Agenda

- Request for Qualification Update
- Communications
- Public Benefits and Evaluation Criteria
- Discussion on Weighting of Criteria

# Roadmap Project

## Using garbage as a resource



# Request for Qualification



## Transportation and Disposal Procurement 2020

May 2 2017



# Qualified Landfills for Disposal RFP



- Columbia Ridge, Gilliam County OR (Arlington)
- Finley Buttes, Morrow County OR (Boardman)
- Roosevelt, Klickitat County WA (Roosevelt)
- Wasco County, Wasco County (The Dalles)



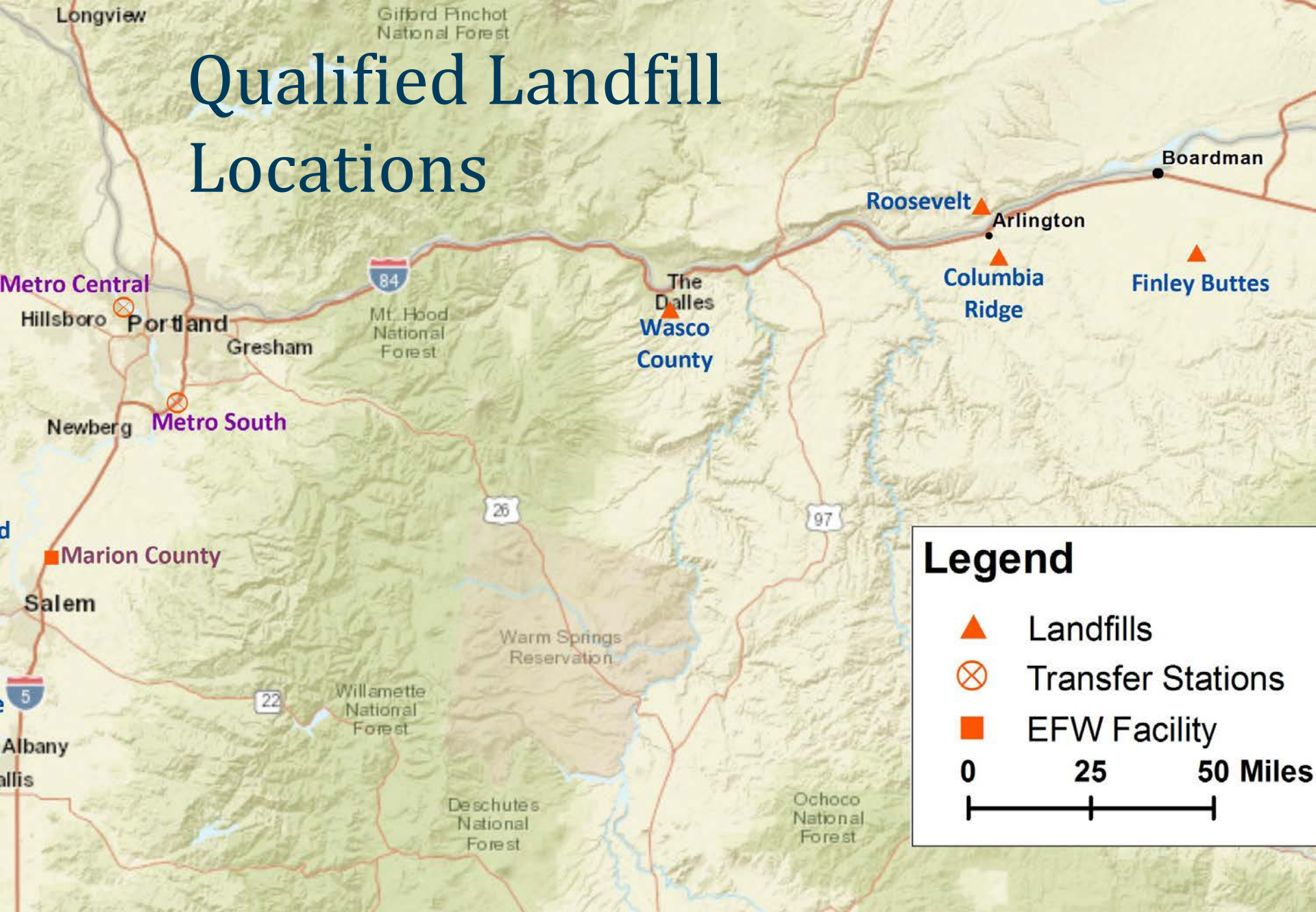
Landfill Gas to Energy



Capacity



# Qualified Landfill Locations





Metro

# Communication

- What we've done
- Through the draft RFP comment period



# Project Milestones

<b>May 2, 2017 *</b>	Overview of transport and disposal procurement.
<b>Summer 2017 *</b>	Evaluation criteria weighting.
<b>Summer 2017</b>	Qualify eligible landfills, and release draft RFPs for comment.
<b>Fall 2017*</b>	Present Council with draft RFPs feedback
<b>Fall 2017</b>	Release RFPs.
<b>Spring 2018</b>	Announce highest ranked firms.
<b>Summer 2018</b>	Negotiate final contracts.
<b>Fall 2018 *</b>	Approve contract signing.
<b>January 1, 2020</b>	New transport and disposal contracts begin.

*\* Asterisk denotes  
Council engagement*



# Focus of Today's Discussion

**Transportation RFP**

Disposal RFP

# Public Benefits and Transport Criteria

Public Benefits of Regional Solid Waste System	2008 Transportation RFP Evaluation Criteria	2017 Transportation RFP Proposed Criteria
Protect people's health	Environmental Impacts	Environmental Impacts
Protect the environment		
Keep the commitment to the highest and best use of materials		
Get good value for the public's money	Cost	Cost
Be adaptive and responsive in managing materials	Operational Considerations, Reduce Risk to Metro	Operational Approach, Experience, and Reduction of Risk to Metro
Ensure services are available to all types of customers	Socioeconomic Impacts	Community and Diversity

# Key Attributes of Transport Criteria

Environmental	Operations	Community and Diversity	Cost
Particulate matter	Equipment and staffing	Workforce diversity	Formula based on low cost proposal
Greenhouse gases	Reliable, timely service	Wages and benefits	
Emissions in Gorge	Contingency plans	COVID subcontractors and suppliers	
	Equipment maintenance and replacement	Noise and Traffic in Neighborhoods	
	Maximizing payloads	Community relations	
	Safety		
	Emergency procedures		
	Adaptable to future change		
	Financial strength		
	Sustainable practices		

# 2008 Transportation RFP Evaluation

Criteria	Points
Environmental Impacts	20
Cost	45
Operational Considerations, Reduce Risk to Metro	25
Socioeconomic Impacts	10
Total	100



# Handout Points for Transport Criteria

## Scratch Pad:

### Your Thoughts About Point Allocation

Criteria	Points
Environmental Impacts	
Cost	
Operational Approach, Experience, and Reduction of Risk to Metro	
Community and Diversity	
Total	100

# 2017 Transportation RFP Evaluation

## Staff Recommendation

Criteria	Points
Environmental Impacts	10
Cost	45
Operational Approach, Experience, and Reduction of Risk to Metro	25
Community and Diversity	20
Total	100

# Questions for Council

- Does Council support the proposed evaluation criteria and point allocation?
- Does Council have any other comments or suggestions about the procurement?

**oregonmetro.gov**

