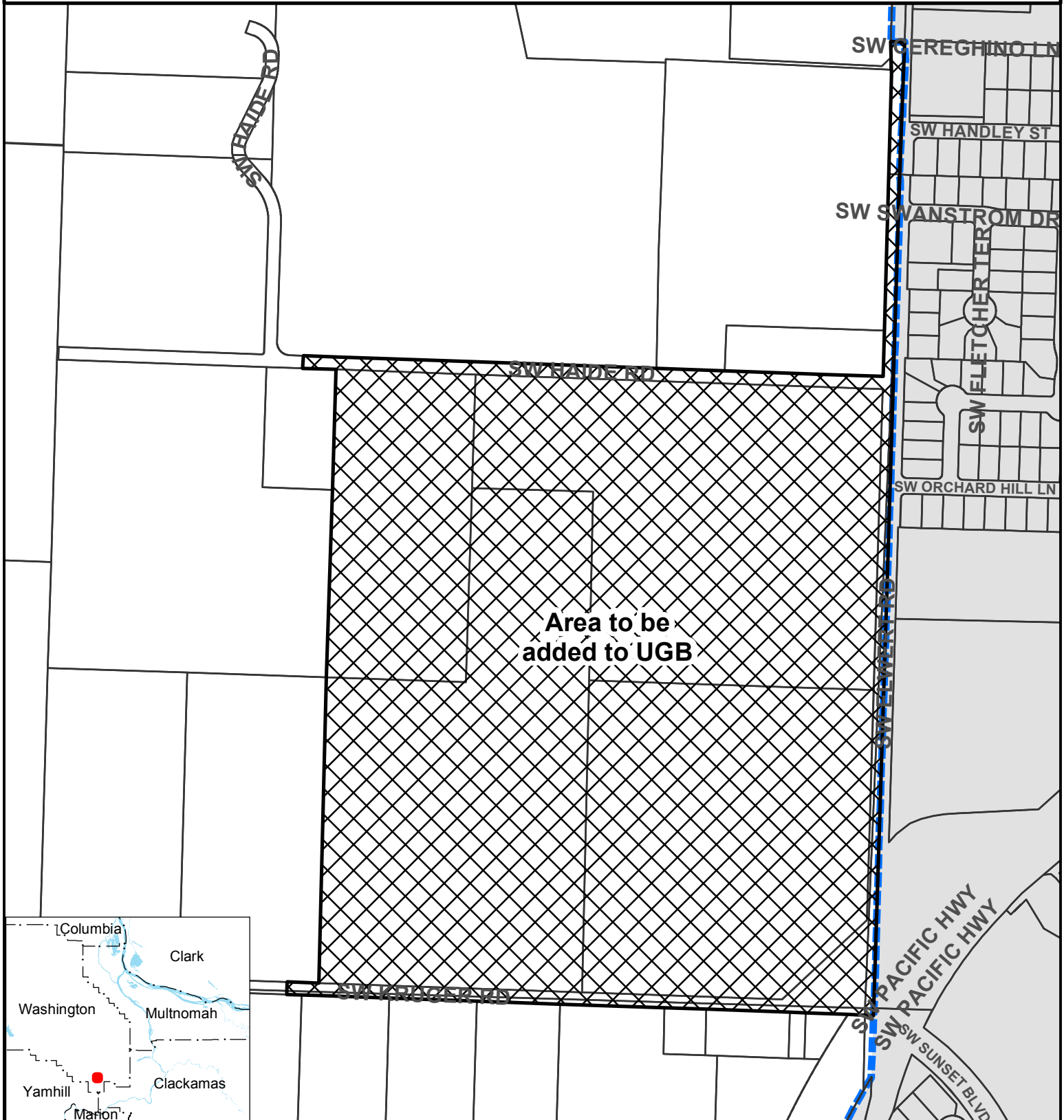


# Case No. 17-02

2S2W25, 2S2W36

Urban Growth Boundary Major Amendment

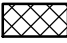

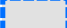
Washington County



## Case No. 17-02 UGB Major Amendment



Research Center  
600 NE Grand Ave  
Portland, OR 97232-2736  
(503) 797-1742  
<http://www.oregonmetro.gov/drc>

-  Area to be annexed
-  Taxlots
-  Urban growth boundary

1:5,000  
0 500 1,000 Feet

The information on this map was derived from digital databases on Metro's GIS. Care was taken in the creation of this map. Metro cannot accept any responsibility for errors, omissions, or positional accuracy. There are no warranties, expressed or implied, including the warranty of merchantability or fitness for a particular purpose, accompanying this product. However, notification of any errors will be appreciated.