

*Getting there*



*by transit*



Metro

# Regional Transit Strategy

*a component of the 2018 RTP*

Metro Council update  
April 11, 2017

# Regional Transit Strategy objectives

- Implement the 2040 Growth Concept and Climate Smart Strategy
- Update RTP transit-related policies and performance measures
- Update and consolidate the current Regional Transit Network Map and High Capacity Transit Map
- Update the Transit System Expansion Policy
- Recommend a coordinated strategy for future transit investments and identify potential partnerships, strategies and funding sources for implementation.

# Regional Transit Strategy

Collaborative effort

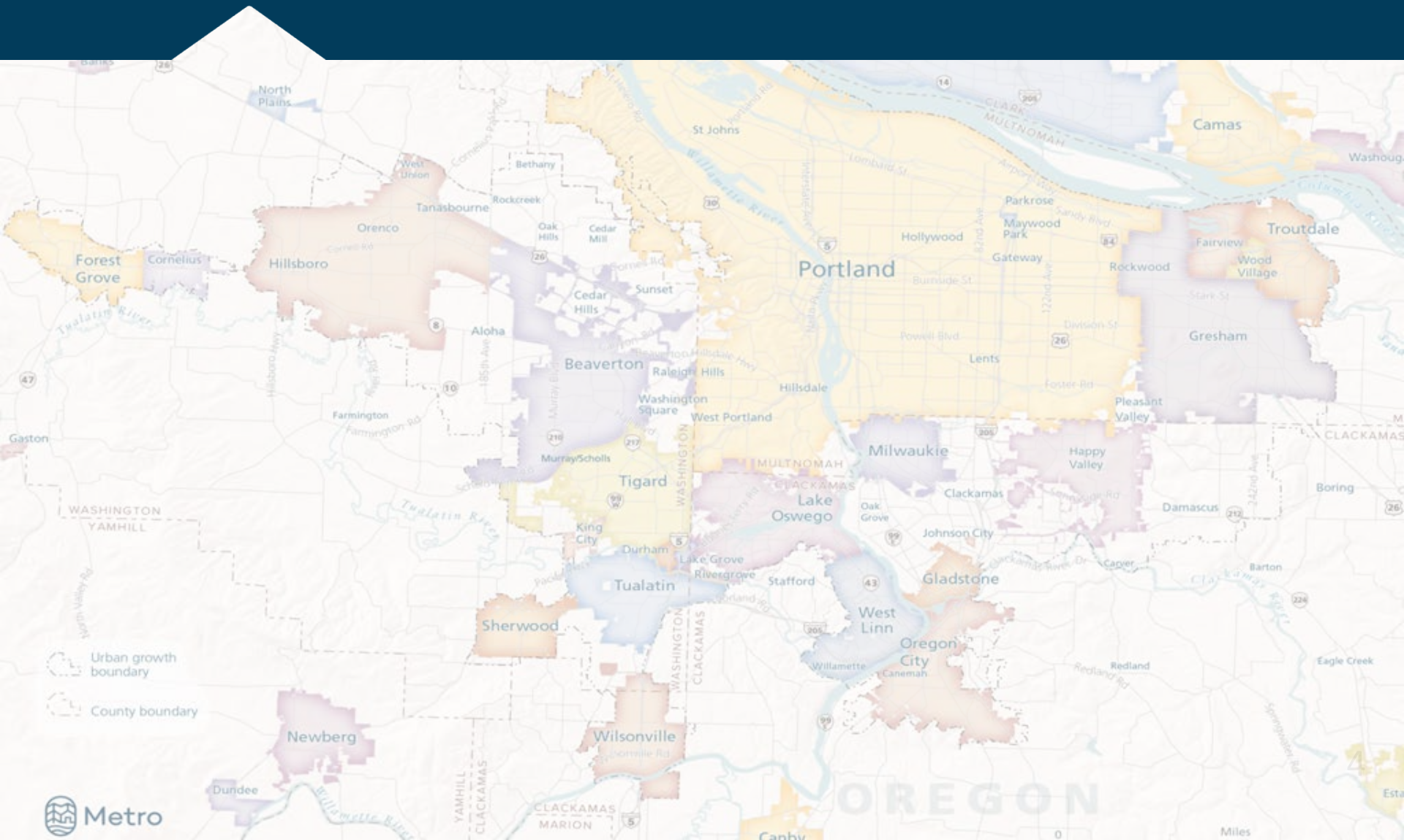
Building off past efforts

Path towards implementation

Transit component of the RTP



# Why now?





# Regional Transit Vision



*“The greatest barriers to the use of public transportation are time and reliability. If people can’t count on transit to get them there at a specific time, they’re not going to use it.”*

*—Adria Decker Dismuke, Milwaukie resident*

oregonmetro.gov

# Climate Smart Strategy

for the Portland metropolitan region

oregonmetro.gov/climatestrategy

## 2014

# 2040 Growth Concept Map

September 2014

The Metro 2040 Growth Concept defines the form of regional growth and development for the Portland metropolitan region. The Growth Concept was adopted in December 1995 through the Region 2040 planning and public involvement process. This concept is intended to provide long-term growth management of the region.

The map highlights elements of parallel planning efforts including: the 2035 Regional Transportation Plan that outlines investments in multiple modes of transportation, and a commitment to local policies and investments that will help the region better accommodate growth within its centers, corridors and employment areas.

For more information on these initiatives, visit <http://www.oregonmetro.gov/2040>

- Central city
- Regional center
- Town center
- Station communities
- Main streets
- Corridors

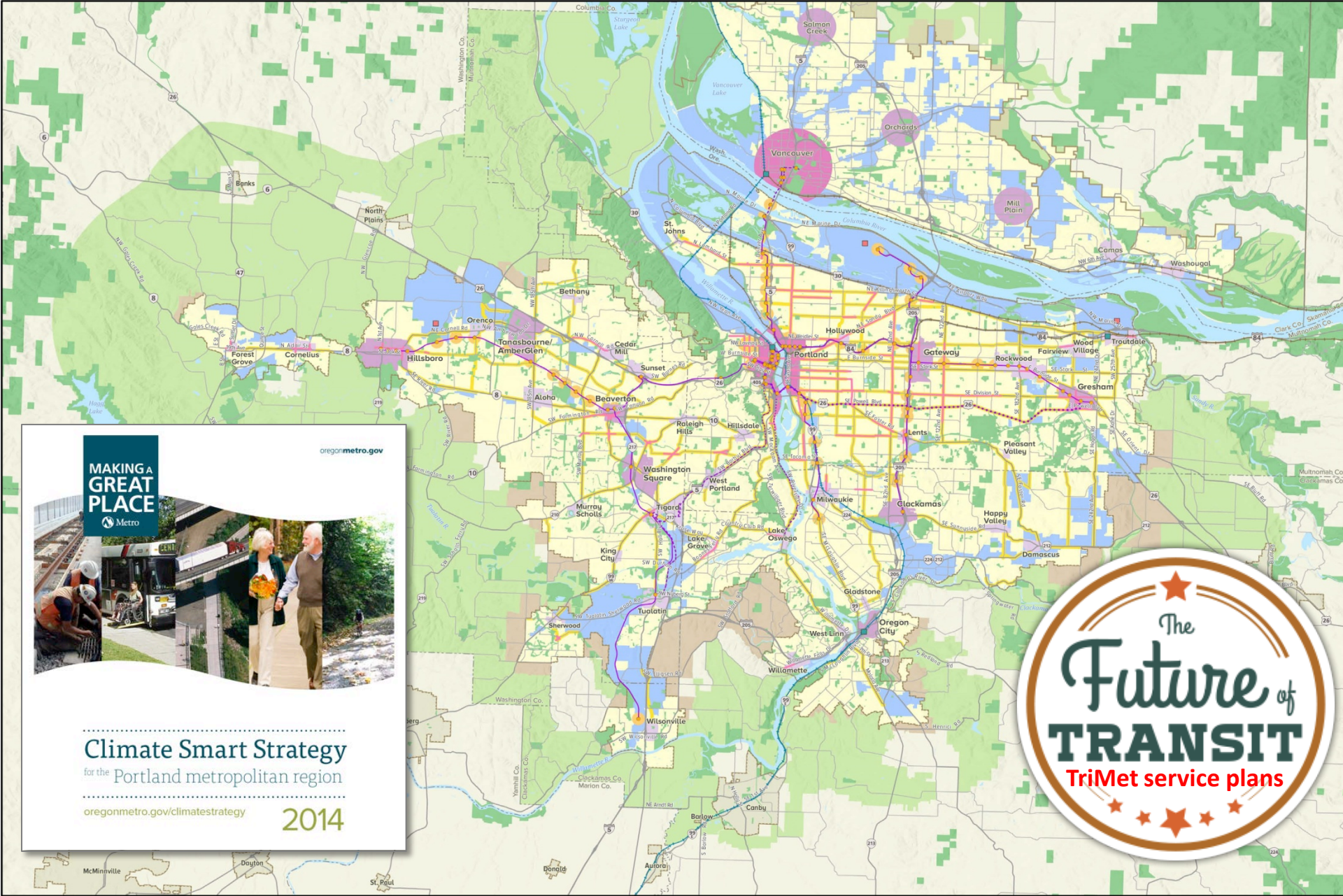
- Employment land
- Parks and natural areas
- Neighborhood
- Rural reserve
- Urban reserve
- Urban growth boundaries

- Existing high capacity transit
- Planned high capacity transit
- Proposed high capacity transit tier 1
- Mainline freight
- High speed rail
- County boundaries

- Neighboring cities
- Airports
- Intercity rail terminal

Metro

Making a great place

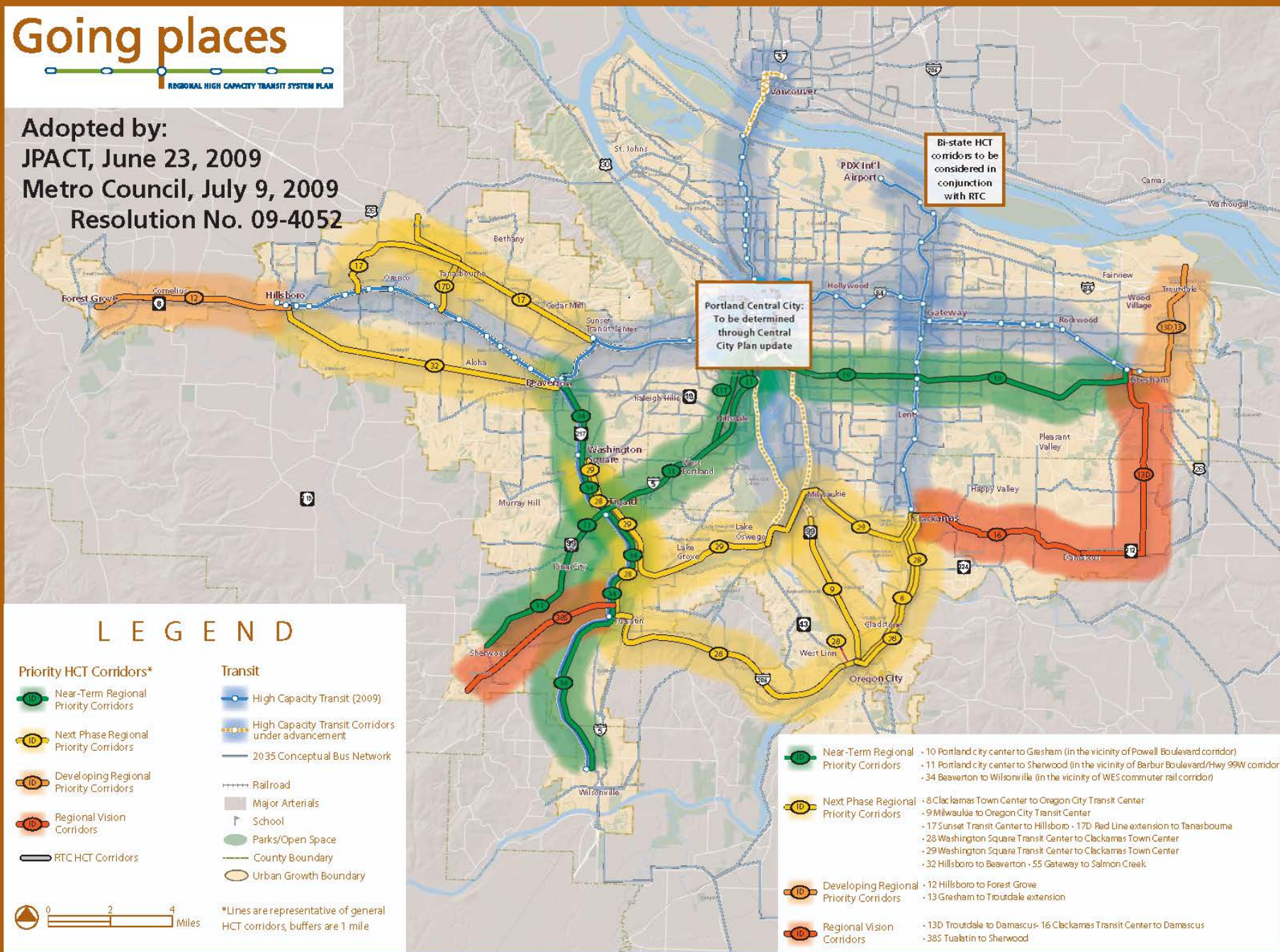




# Going places

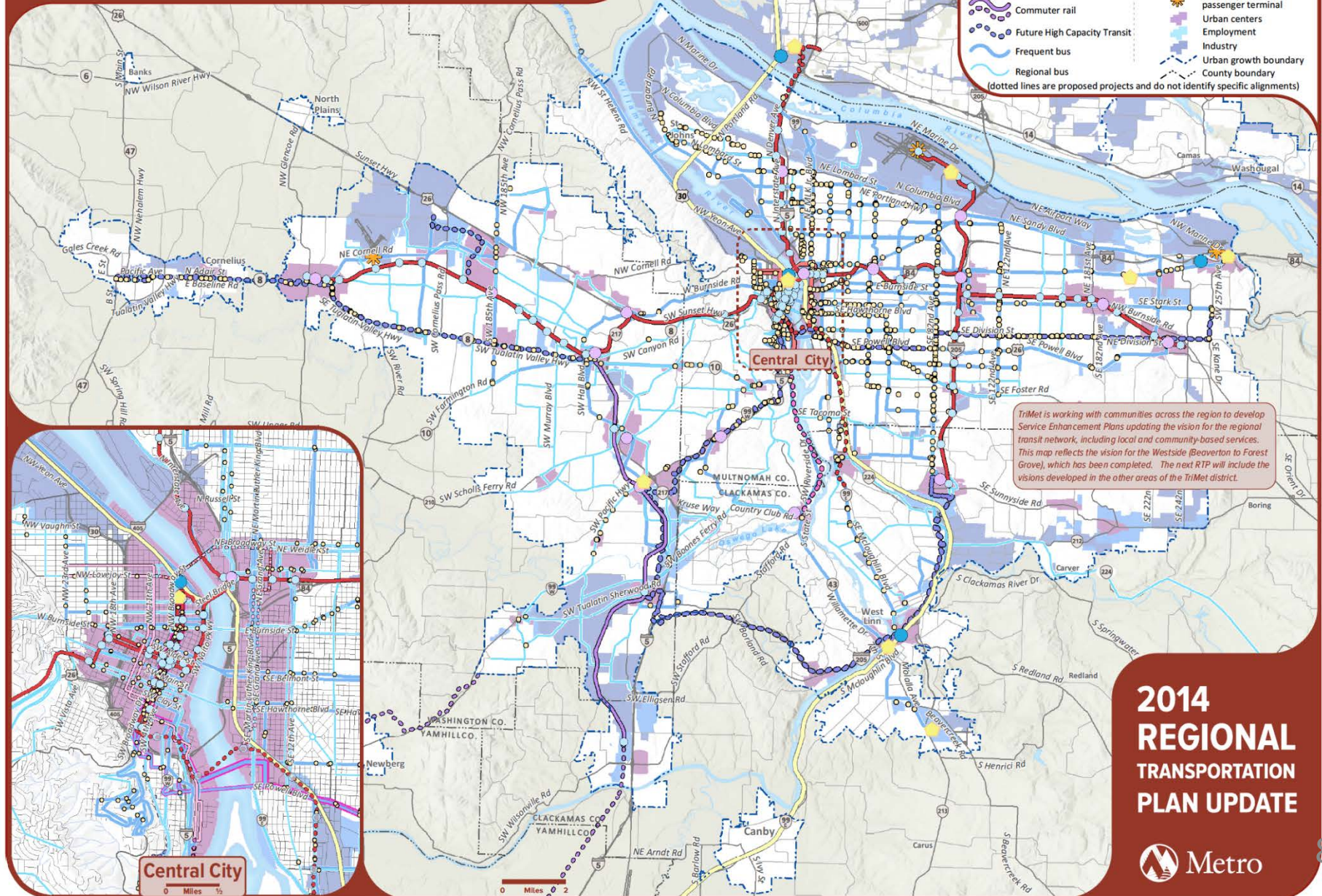


Adopted by:  
JPACT, June 23, 2009  
Metro Council, July 9, 2009  
Resolution No. 09-4052





# Regional Transit Network

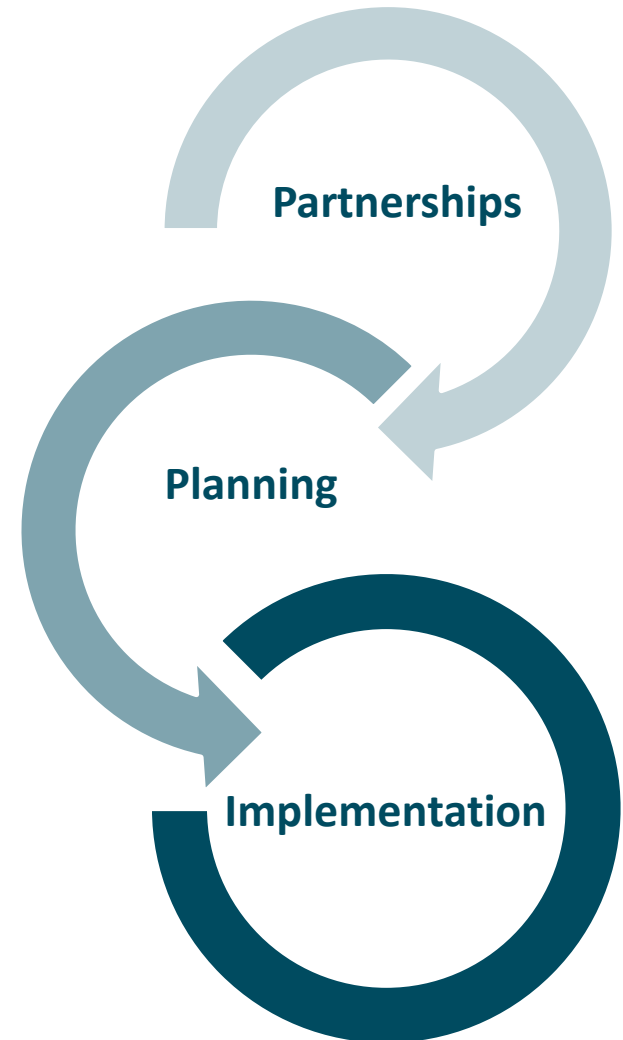




[illegible]

# Regional Transit Vision

To make transit more  
frequent, convenient,  
accessible and  
affordable for everyone





# Make transit more frequent by...

Implement transit providers service plans

Invest in capital improvements

Implement TriMet's Coordinated Transportation Plan

Coordinate with local and regional land use and transportation visions



# Make transit more convenient by...

Implement transit providers service plans

Invest in capital improvements

Invest in maintenance and bottlenecks

Improve connections

Implement/coordinate the HOP Fastpass

Invest in transit technology

Expand policies to increase transit usage

Improve route and schedule information





# Make transit more accessible by...

Provide/coordinate safe walking and biking to transit

Provide new transit connections

Enhance access to jobs and other daily needs

Coordinate shared mobility and ride-sourcing

Coordinate transit-oriented development and Equitable Housing strategies

Coordinate local and regional land use and transportation visions



# Make transit more affordable by...

Implement the low-income fare  
TriMet/Metro Task Force  
recommendation

Expand transit payment options

Expand student pass program





[illegible]

# New Concept emerging: Enhanced Transit corridors

Transit capital and operating partnerships:

- Increase capacity and reliability where needed
- Relatively low-cost to construct, context-sensitive, and able to be deployed more quickly



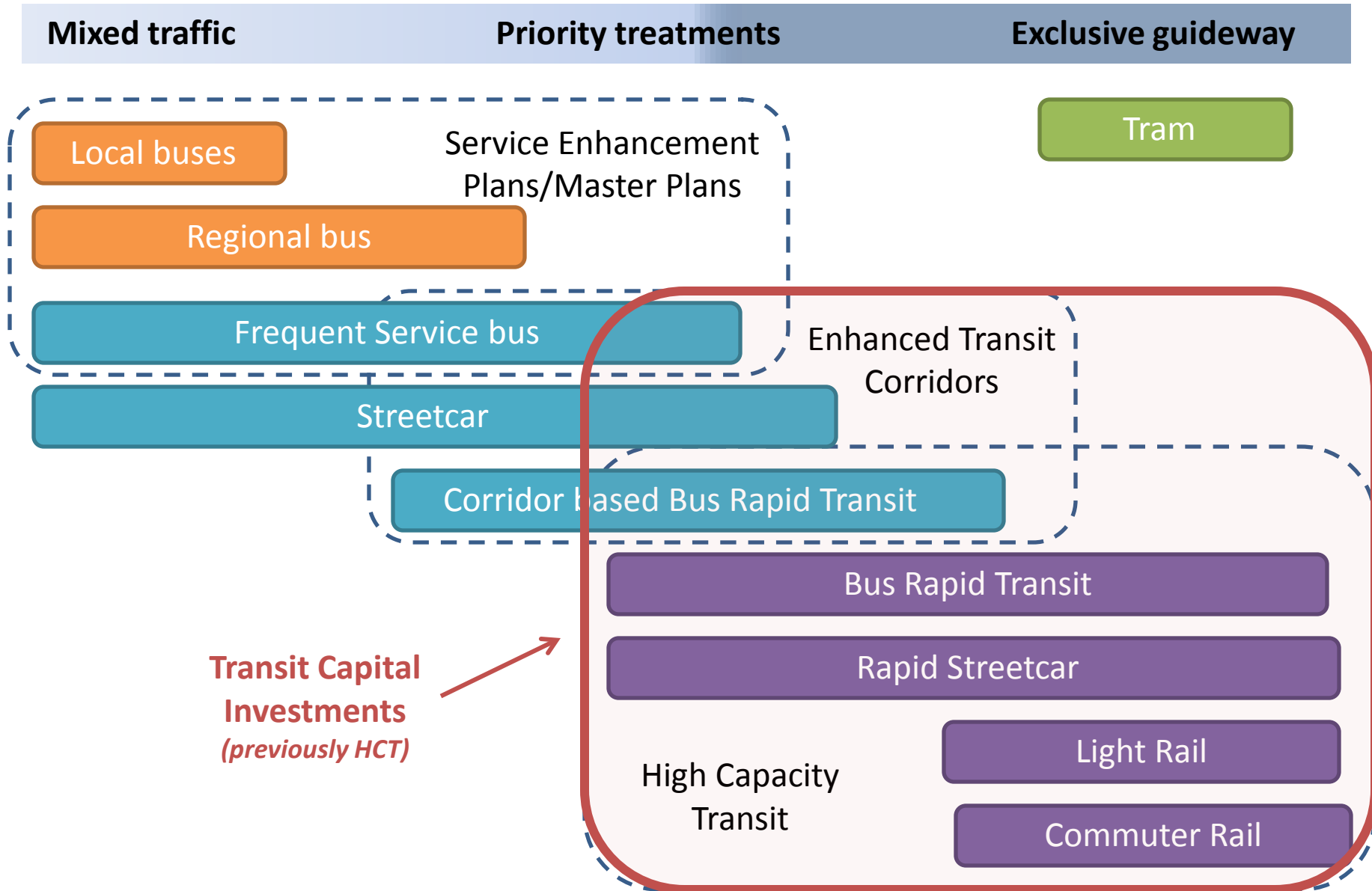


# High Capacity Transit

*“To carry high volumes of passengers quickly and efficiently from one place to another. Other defining characteristics of HCT service include the ability to **bypass traffic and avoid delay** by operating in exclusive or semi-exclusive rights of way, **faster** overall travel speeds due to wide station spacing, **frequent** service, **transit priority** street and signal treatments, and **premium station and passenger amenities**.”*

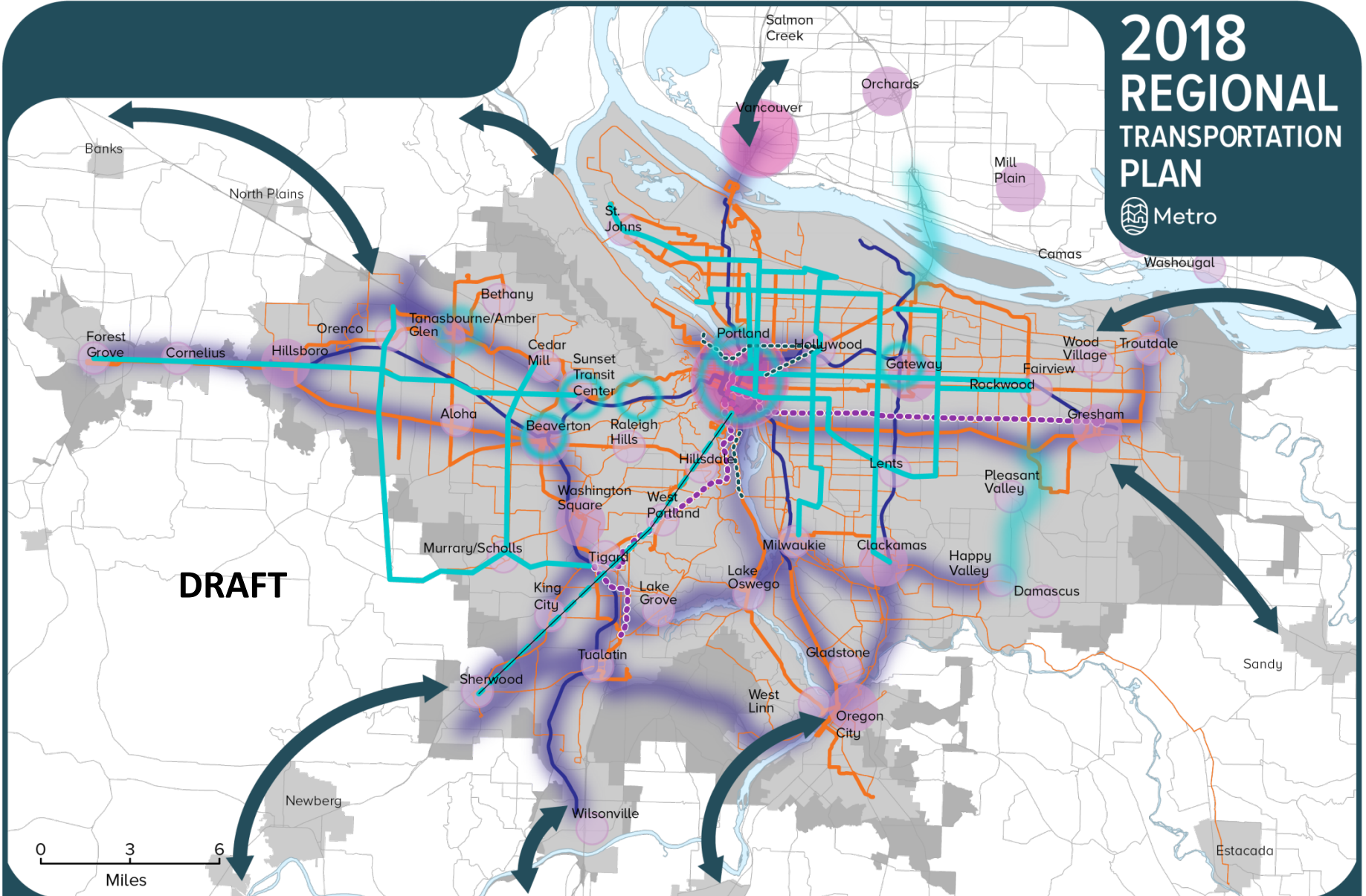
Metro, 2035 Regional High Capacity Transit System Plan, 2009.

# REGIONAL TRANSIT SPECTRUM

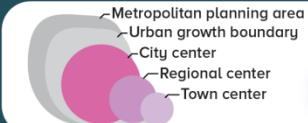




# 2018 REGIONAL TRANSPORTATION PLAN



**DRAFT**



High capacity transit  
HCT Project Development  
HCT corridor



Future bus  
Future frequent bus  
Neighboring transit

Transit Workgroup suggestions 2/23/17



Future Portland Streetcar



Potential enhanced transit corridors



Future HCT corridors



Needs



Express service

# Transit System Expansion Policy

## Updating the Transit System Expansion Policy:

Apply to projects seeking federal FTA Capital Investment Grant (CIG) funding (commuter rail, light rail, BRT, corridor-based BRT, streetcar...)

Simplify existing criteria

Guide the decision-making process for transit capital project prioritization





# Discussion/feedback

We are looking for feedback from the Metro Council regarding:

- ❑ The goals, discussed today, as establishing our policy framework
- ❑ Proposed changes and additions to our adopted HCT System Map
- ❑ The enhanced transit corridor concept and framework
- ❑ Specific ideas regarding transit capital project prioritization criteria that we should consider

# Thank you

