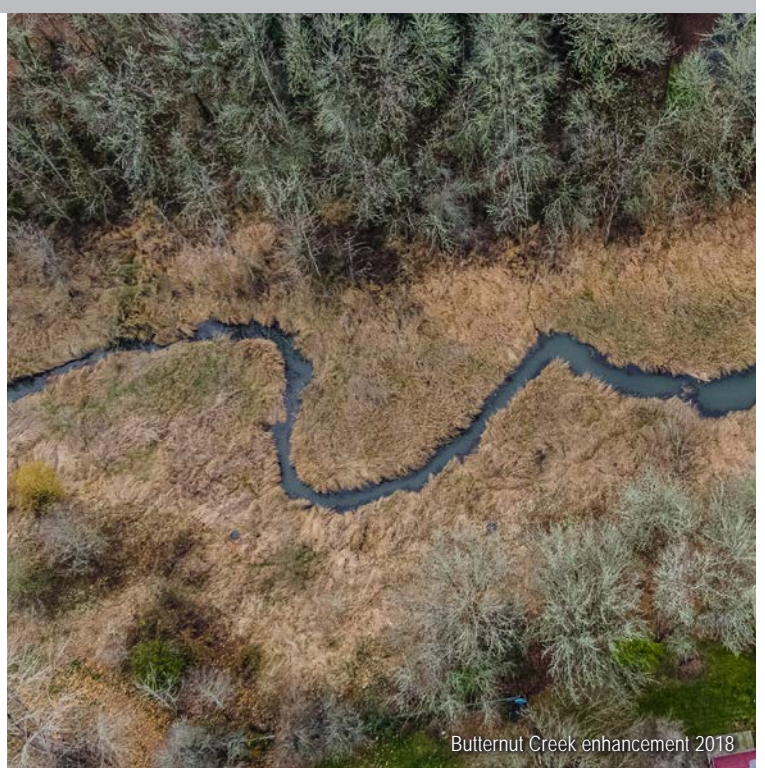


# SOUTH BULL MOUNTAIN

## REGIONAL STORMWATER AND SANITARY SYSTEM STUDY



### Planning Ahead to Support Future Growth

To support thoughtful environmental planning for our region, Clean Water Services will be working with specialized consultants to conduct two parallel regional studies in the South Bull Mountain area: a stormwater and a sanitary system study. As the region develops, careful planning is needed to ensure appropriate infrastructure is in place in each community to protect the environment and serve our growing population.

The studies will analyze technical and on-the-ground data, model alternatives and produce recommendations for effective regional stormwater management and sanitary system design for the future. Clean Water Services is coordinating with local governments and the community on the process. The studies will begin in spring 2022 and be completed in early 2023. The studies' recommendations will influence future stormwater management and sanitary systems and guide future infrastructure development.

### Stormwater Study

Stormwater, the runoff from pavement, roofs, construction and other developed areas, is an important issue to manage as communities grow. Due to the complexity of the area's geography

and all-encompassing nature of stormwater, a regional stormwater strategy is necessary to provide a more comprehensive approach to stormwater management. The study will provide technical analysis through field work and modeling. This regional strategy will also lay the ground work for better coordination between local governments and with the community.

The stormwater study results will be used to determine what options are feasible for stormwater management in the South Bull Mountain area. Options might include things like water quality facilities such as bioswales, on-site and street-side planters, detention ponds, in-stream resiliency, or a combination of approaches. It will also include recommendations to consider for stream enhancement and retrofits to mitigate existing impacts to local streams, although funding for these will not be identified. We anticipate the study will be complete in late winter 2022, and will provide guidance to local jurisdictions as they plan for future projects. This stormwater study is one element contributing to larger transportation and land use planning processes led by individual cities and counties.

For all new development, Clean Water Services requires adherence to our Design & Construction standards, which were (over)



# SOUTH BULL MOUNTAIN REGIONAL STORMWATER AND SANITARY SYSTEM STUDY

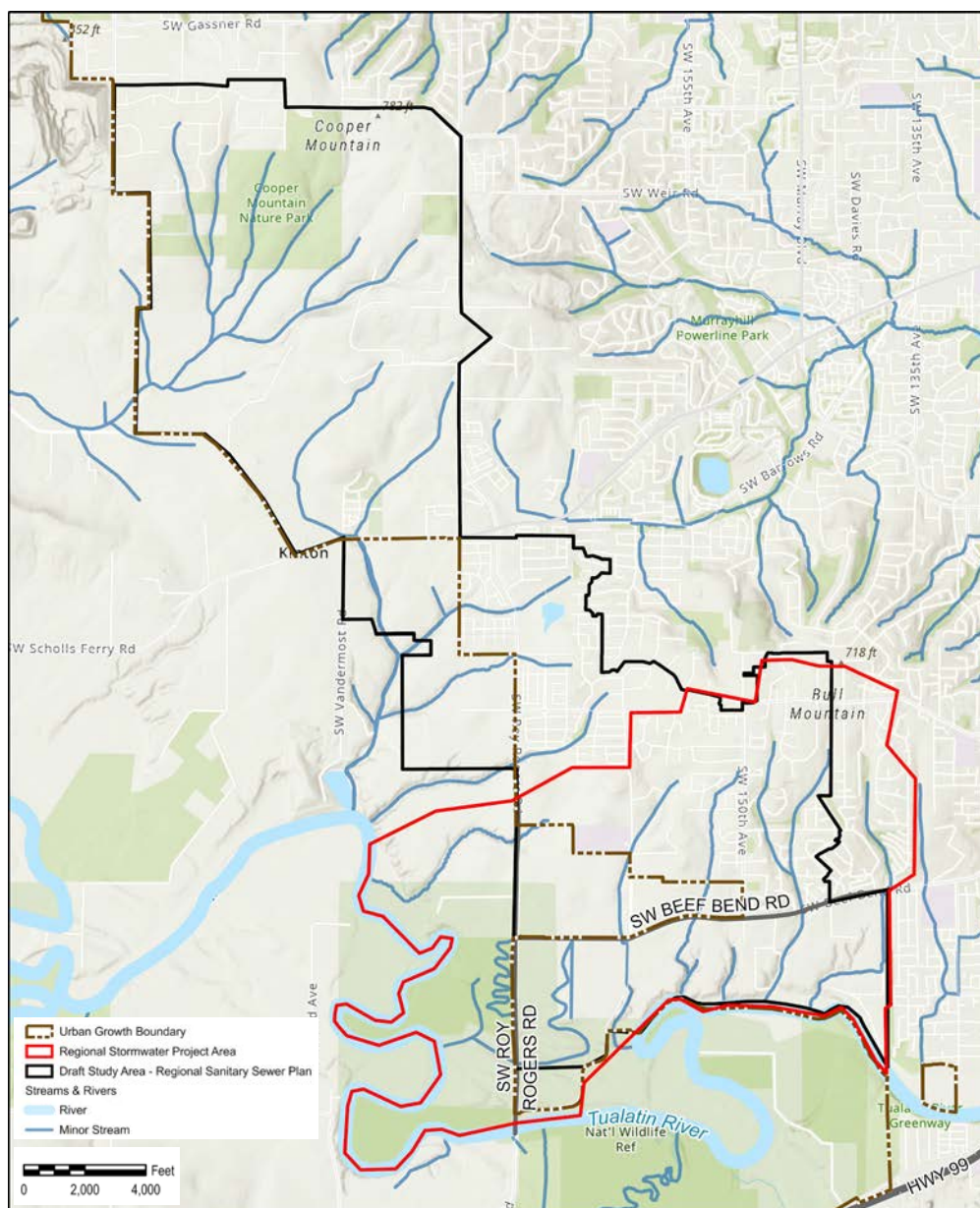
developed to minimize environmental impacts from new construction.

## Sanitary System Study

The regional sanitary system study, which covers a slightly different geographic area in order to capture the upstream sanitary drainage basin (including areas served by pump stations), will provide recommendations to manage future regional sanitary needs as this area develops.

The study will analyze areas that are being planned for future development: Two unincorporated areas within Washington County, to the west and south of Bull Mountain; Tigard's future River Terrace West and South Concept Plan (urban reserve area on Tigard's west boundary), and King City's master plan for the Beef Bend South area (also known as Kingston Terrace) as well as conveyance of the new flows from the adjacent Cooper Mountain Tile Flat Planning Area.

The study will integrate local sanitary system planning concepts with existing infrastructure to recommend the best design for an effective system to serve the growing community. It will also consider use of Class A recycled water for certain areas. A cohesive regional sanitary system plan will provide guidance to local jurisdictions and developers as they plan for future projects. We anticipate the study will be complete in early 2023.



## Community Engagement

Clean Water Services will engage with the public to provide information and seek input on topics in the studies. Methods will include mailings, personal outreach, open houses and informational materials.

Contact Chris White with questions about the project at 503.681.3669 or [southbullmtnplanning@cleanwaterservices.org](mailto:southbullmtnplanning@cleanwaterservices.org)



Lower Tualatin Pump Station

Everything we do at Clean Water Services aims to protect public health while enhancing the natural environment of the Tualatin River Watershed.

  
**Clean Water Services**

UTILITY OPERATIONS & SERVICES  
2550 SW Hillsboro Highway  
Hillsboro, OR 97123  
503.681.3600  
[cleanwaterservices.org](http://cleanwaterservices.org)

May 2022