

Overview of JPACT 2021 Work Plan

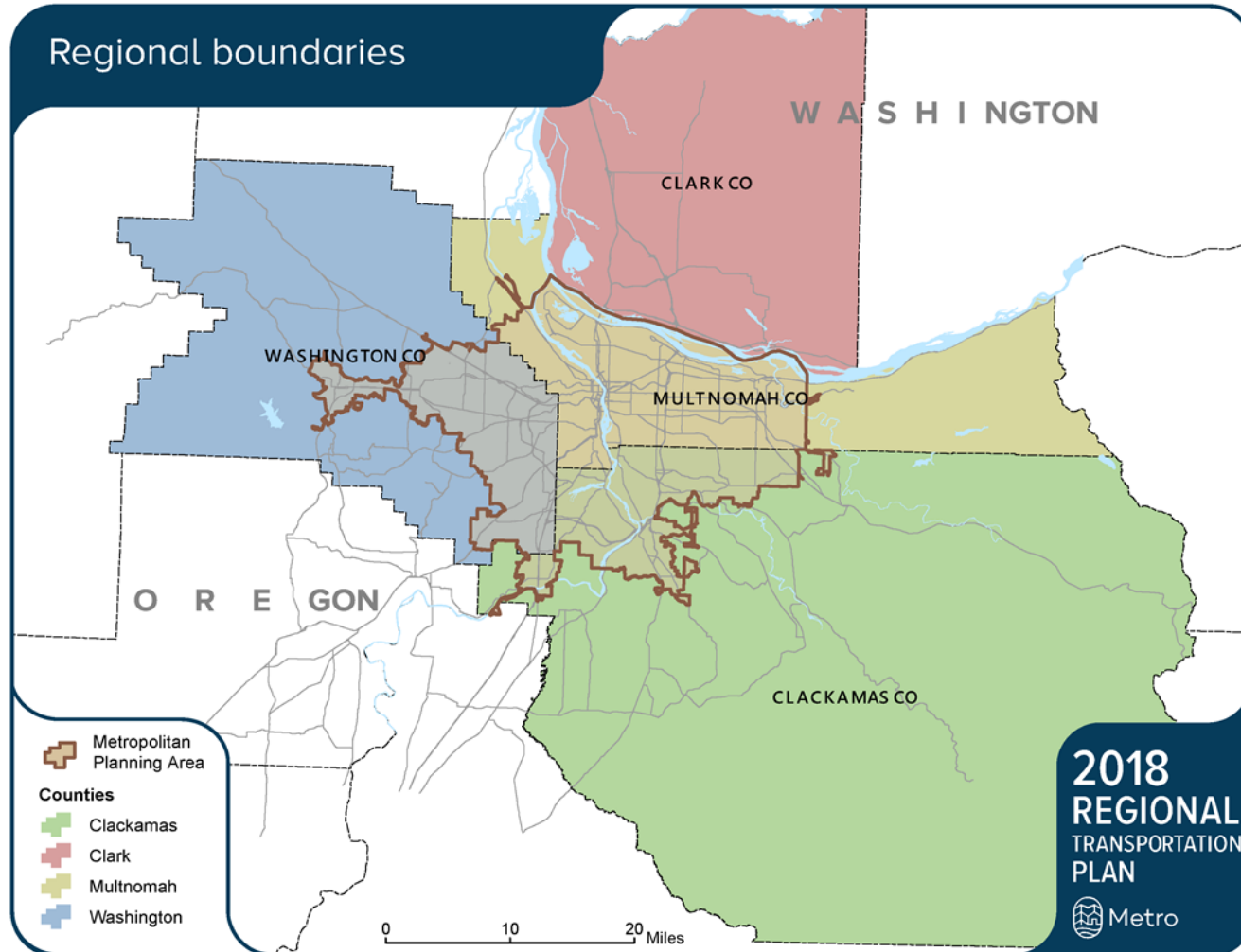
Today's presentation:

- Summary of role of the MPO and JPACT
- Overview of the JPACT 2021 Work Plan

Metropolitan Planning Organization (MPO)

- The MPO is **created by federal law** and designated to carry out the metropolitan transportation planning process.
- An urbanized area with a population over 200,000, as defined by the Bureau of the Census and designated by the Secretary of the U.S. Department of Transportation (DOT), is called a **Transportation Management Area (TMA)**.
- As described in 49 U.S.C. 5303(k), and in recognition of the greater complexity of transportation issues in large urban areas, an MPO in a TMA has a stronger voice in setting priorities for implementing projects listed in the transportation improvement program and are responsible for regional transportation plans.
- In Oregon, MPOs are also responsible for complying with **state transportation and land use law**.

Metropolitan Regional Boundary



The boundary of an MPO is based on the census and established by the Governor of Oregon.

- 24 cities
- 3 counties
- Bi-state region
- More than 1.6 million people (today)
- More than 2 million people (by 2040)

Joint Policy Advisory Committee on Transportation (JPACT)

- Federal law, MAP-21, requires TMAs to have a **decision-making structure** that incorporates input from local elected officials, transit agencies, appropriate state officials, and others.
- JPACT serves as the “**policy advisory committee**” as defined by the federal regulations.
- MPO decisions for planning, investment and programming are **shared between the Metro Council and JPACT**.
- The **Transportation Policy Alternatives Committee (TPAC)** serves as a technical and advisory committee to JPACT.

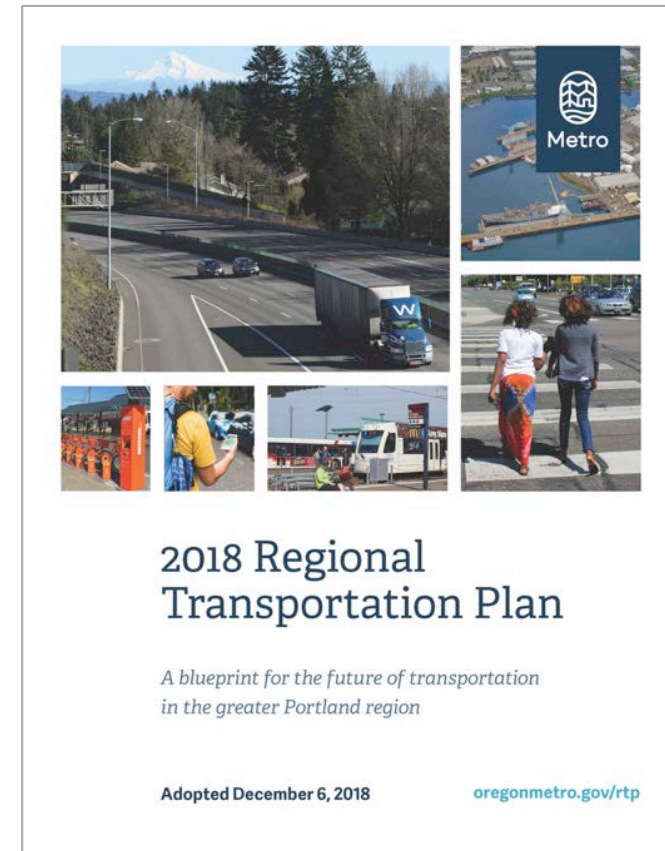
Joint Policy Advisory Committee on Transportation (JPACT)

Primary functions of the Metro MPO:

- **Regional Planning** - development of the Regional Transportation Plan and implementing plans, policies and projects
- **Funding** – allocation of federal funds and coordination of all urban area transportation funding allocations
- **Congestion Management Process** – development of a CMP and coordinating implementation; demonstrate compliance with Clean Air Act, federal laws
- **Climate Smart Strategy** – planning and coordination of implementation of Climate Smart to reduce greenhouse gases, required by state law

Regional Transportation Plan

- 20-year plan
- Blueprint to guide planning and investment in the region's transportation system
- Includes policies, plans and projects
- Coordinates local, regional, and state investments
- Establishes priorities for state and federal funding



2018 RTP Priorities



Equity



Climate



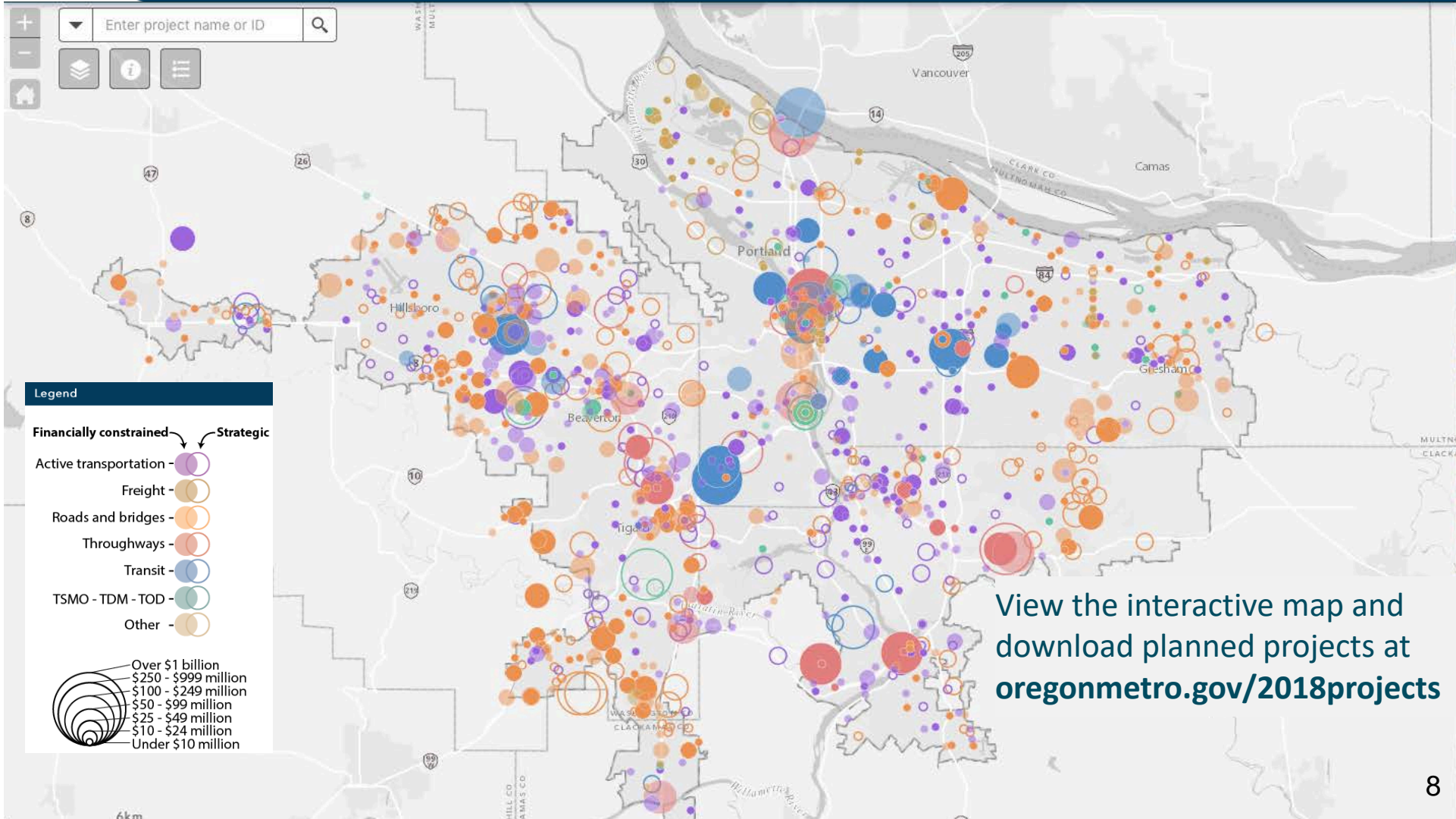
Safety



Congestion

RTP financially constrained priorities

\$42 billion planned by 2040



Metropolitan Transportation Improvement Program

Metropolitan Transportation Improvement Program (MTIP)

- Detailed list - regionally significant projects & programs
- Process - align investments to regional goals
- Administrative procedures



JPACT 2021 Work Plan

Three major categories of the JPACT 2021 Work Plan:

- Regional transportation **planning and policy**
- Regional transportation **programs and resources**
- **Corridor plans and major transportation projects**

JPACT 2021 Work Plan: Planning and Policy

Regional Transportation Plan

- Implement Chapter 8 of the 2018 RTP
- Begin scoping the 2023 RTP

Regional Mobility Policy Update

Regional Congestion Pricing Study

Regional Emergency Transportation Routes

Freight Commodity Study



Emerging Trends: Changes in transportation in 2020 and looking ahead

JPACT 2021 Work Plan: Programs and Resources

Funding

- MTIP
- Regional Flex Fund Allocation (2025-27)

Programs

- Transportation System Management Operations (TSMO) – *Strategy update*
- Traffic Safety
- Enhanced Transit Concepts/Corridors
- Safe Routes to School
- Regional Transportation Options

JPACT 2021 Work Plan: Corridor Plans and Major Projects

New Corridor Plans:

- TV Highway Corridor Plan
- Sunset/Westside (HWY 26) Corridor Plan

Projects (updates or actions on major regional projects underway):

- ODOT/WSDOT – I5 Bridge Replacement
- ODOT
- TriMet
- Metro
- Counties

Questions?

Margi Bradway
Deputy Director
Planning and Development Department
Margi.bradway@oregonmetro.gov