



Metro

Metro Housing Update

MPAC | March 22, 2023

Metro communications: From homelessness into housing

Multnomah: Raven's story



“We weren’t always houseless,” Raven explained, sitting in the community room of the Cathedral Village apartments where he lives with his husband Dash and their malamute puppy Oscar.

Clackamas: Kathy's story



Just before Christmas last year, Kathy slept on the sidewalk for the first time in her life. She remembers how the rain soaked right through her sleeping bag, with only the plastic poncho a friend gave her to keep some of her dry. It was around 33 degrees that night.

Washington: Steve's story



Three months ago, Steve was spending his nights in a field in rural Washington County. When his wife passed away from cancer seven years before, things started to unravel for him, leading to years of homelessness.

SHS Regional overview: Progress to goals snapshot as of December 31, 2023

Housing Placements: Permanent Supportive housing*

	Clackamas	Multnomah	Washington	Regional total
Progress	124 households <i>204 people</i>	155 households <i>265 people</i>	348 households <i>403 people</i>	627 households <i>872 people</i>
Goals	385 households	545 households	500 households	1,430 households

**Supportive housing: permanent supportive housing and other service-enriched housing for Population A (e.g. transitional recovery housing)*

SHS Regional overview: Progress to goals snapshot as of December 31, 2023

Housing Placements: Rapid Re-Housing

	Clackamas	Multnomah	Washington	Regional total
Progress	3 households <i>3 people</i>	112 households <i>169 people</i>	82 households <i>206 people</i>	197 households <i>378 people</i>
Goals	140 households	800 households	400 households	1,340 households

SHS Regional overview: Progress to goals snapshot as of December 31, 2023

Eviction and homelessness prevention

	Clackamas	Multnomah	Washington	Regional total
Progress	30 households <i>30 people</i>	118 households <i>192 people</i>	0 households <i>0 people</i>	148 households <i>222 people</i>
Goals	250 households	800 households	200 households	1,250 households

SHS Regional overview: Progress to goals snapshot as of December 31, 2023

Shelter beds/units

	Clackamas	Multnomah	Washington	Regional total
Progress	139 beds	304 units	70 units	513 beds / units
Goals	140 beds	400 units	80 units	620 beds / units

Regional overview: Population A/B

Report Out : Q1 and Q2 (FY22-23)

		Long-term Homeless (Population A)			Homeless/At Risk (Population B)			TOTAL (regional)
		Clack	Mult	Wash	Clack	Mult	Wash	
Total households placed/ stabilized in housing		111	201	247	46	199	183	987
Total people placed/ stabilized in housing		174	236	308	63	306	301	1,388

Regional Long-term Rent Assistance program snapshot

	Clackamas	Multnomah	Washington	Regional total
Total housed (leased up) this year	92 households	98 households	324 households	514 households
Total households in housing using RLRA voucher*	214 households	287 households	623 households	1,124 households

****Number of households in housing using an RLRA:*** Number of households/people who were in housing using an RLRA voucher at any point during the reporting period. (Includes (a) everyone who has been housed to date with RLRA and is still housed, and (b) households who became newly housed during the reporting period.)

Tri County Planning Body - Update

Background:

- Required by ballot measure 26-210
- Tasked with setting goals for regionalization
- Directs 5% of SHS revenue towards regionalization
- Convened monthly
- Sep-March – developing regional goals

Tri County Planning Body - Update

Current Status: Finalizing Goals and Recommendations

- Training and Technical Assistance
- Employee Recruitment and Retention
- Coordinated Entry
- Regionwide Landlord Recruitment
- Healthcare System Alignment

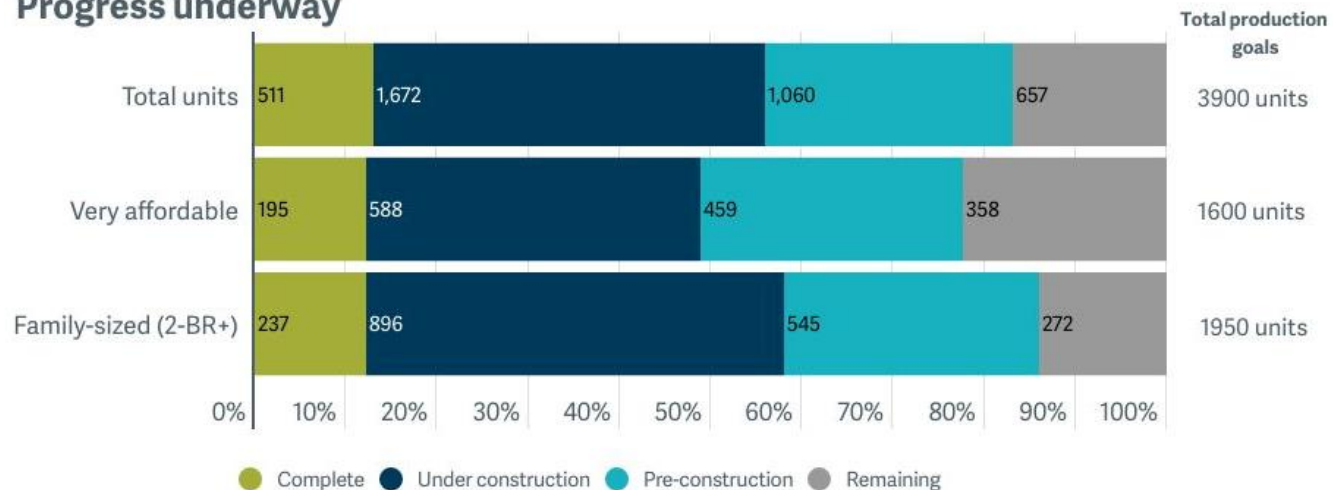
Tri County Planning Body - Update

Next Steps:

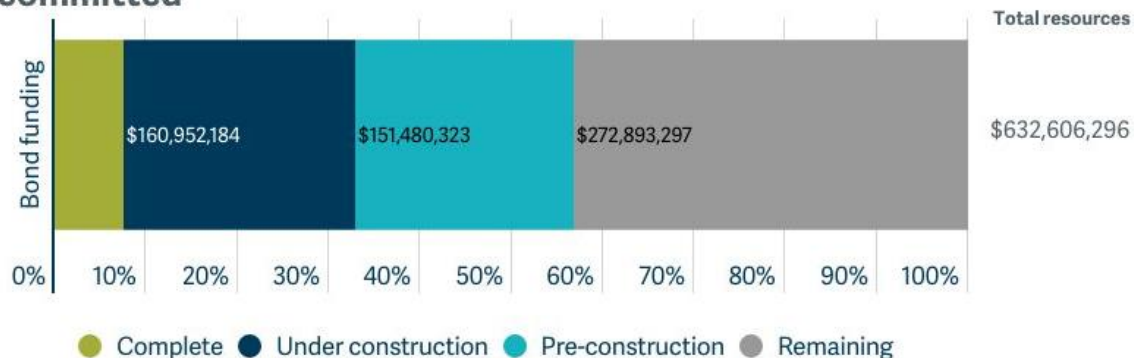
- Metro and county staff scope opportunities consistent with the TCPB's direction
- Staff develop associated work plans and budgets for TCPB review

Affordable housing bond dashboard

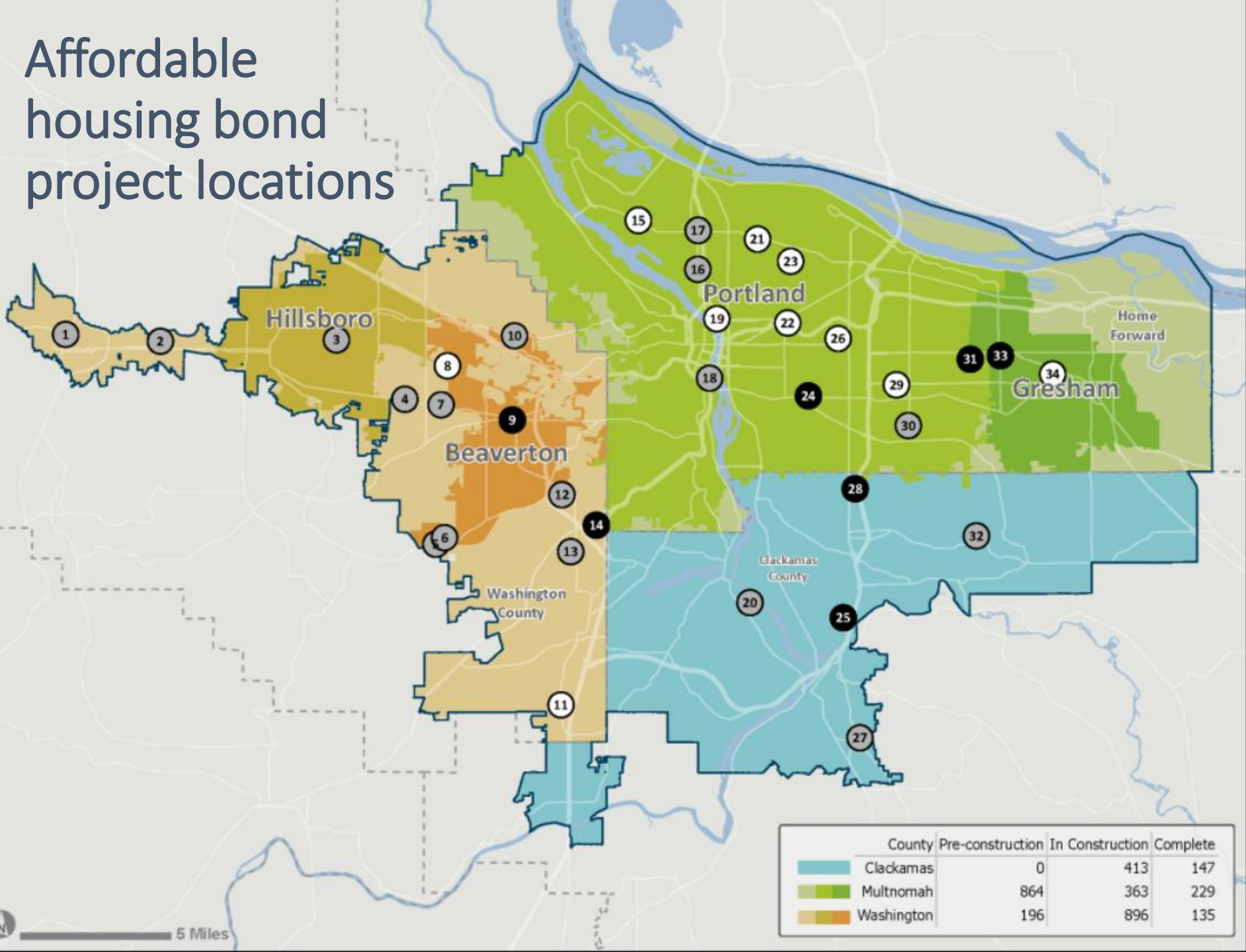
Progress underway



Resources committed



Affordable housing bond project locations



Fuller Station (Clackamas County)

- 100 apartments
- Geller Silvis and Guardian with JOIN and DevNW



Hattie Redmond (Multnomah County)

- 60 studio apartments
- Home Forward and Urban League



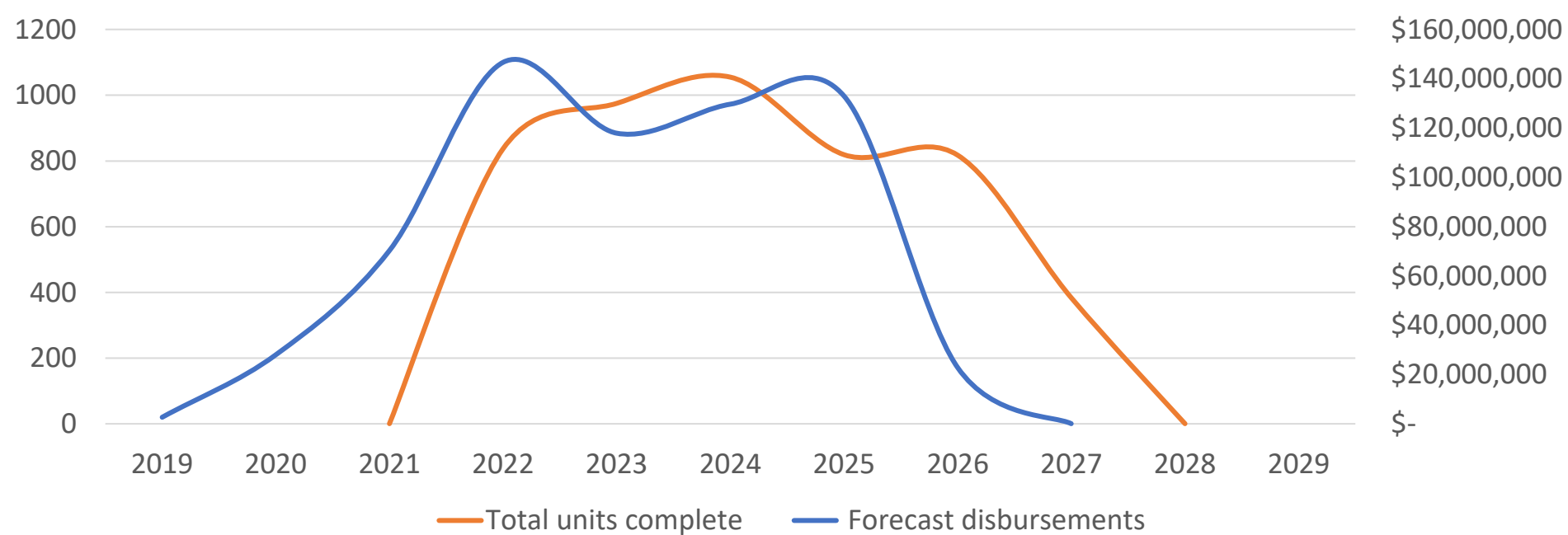
Aloha Inn (Washington County)

- 54 studio apartments
- Housing Authority of Washington County with Bienestar and Urban League



Affordable housing bond pipeline

Yearly total units complete; disbursements



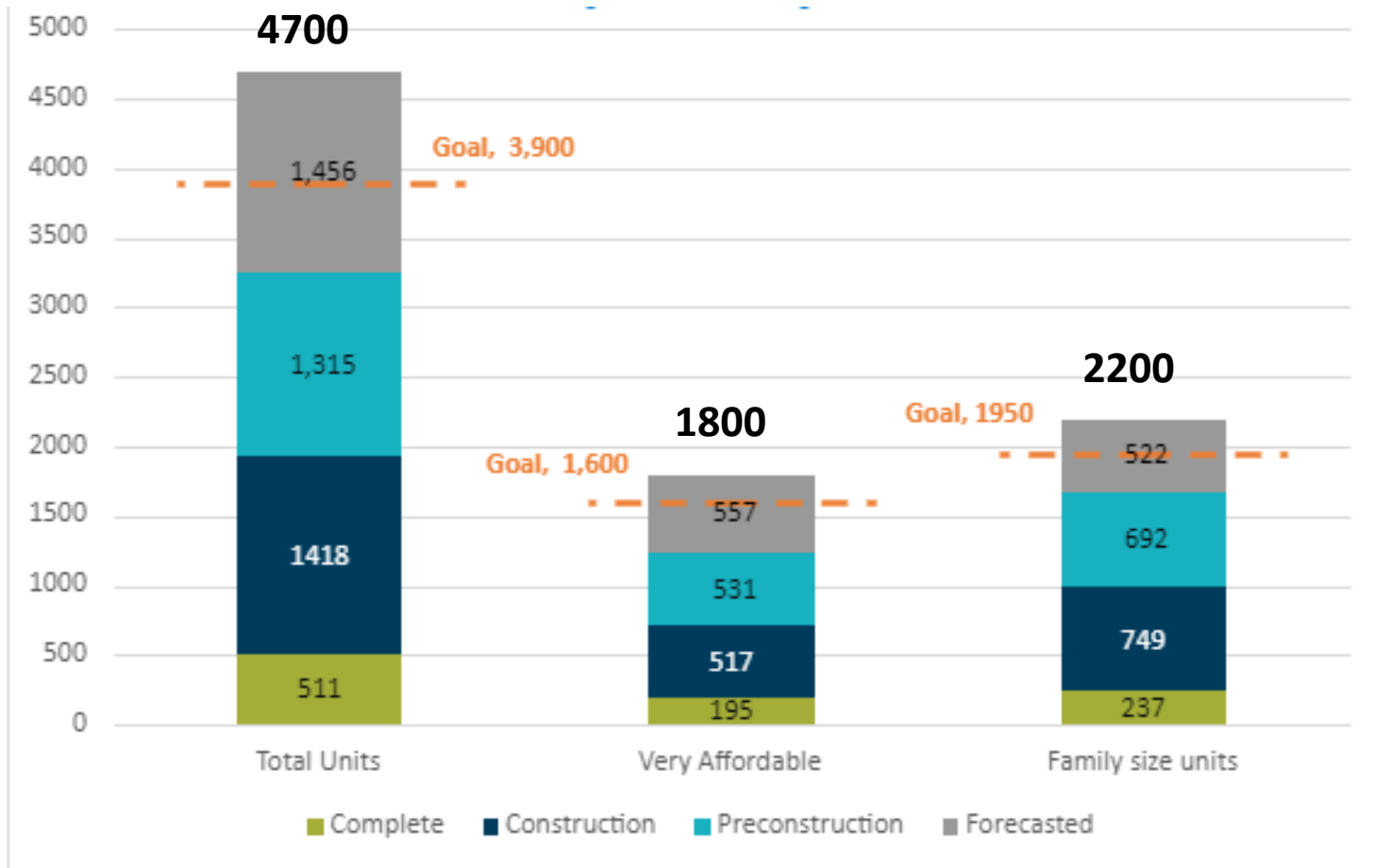
Typical project timeline:

Solicitation and
predevelopment (12-
18 months)

Construction (18-24
months)

Lease up (9-15
months)

Forecasted production outcomes





Metro

Thank you

MPAC | March 22, 2023