



Garbage & Recycling System Facilities Plan

Metro Policy Advisory Committee
Phase 2 Engagement Summary
January 25, 2023



Agenda

Project overview

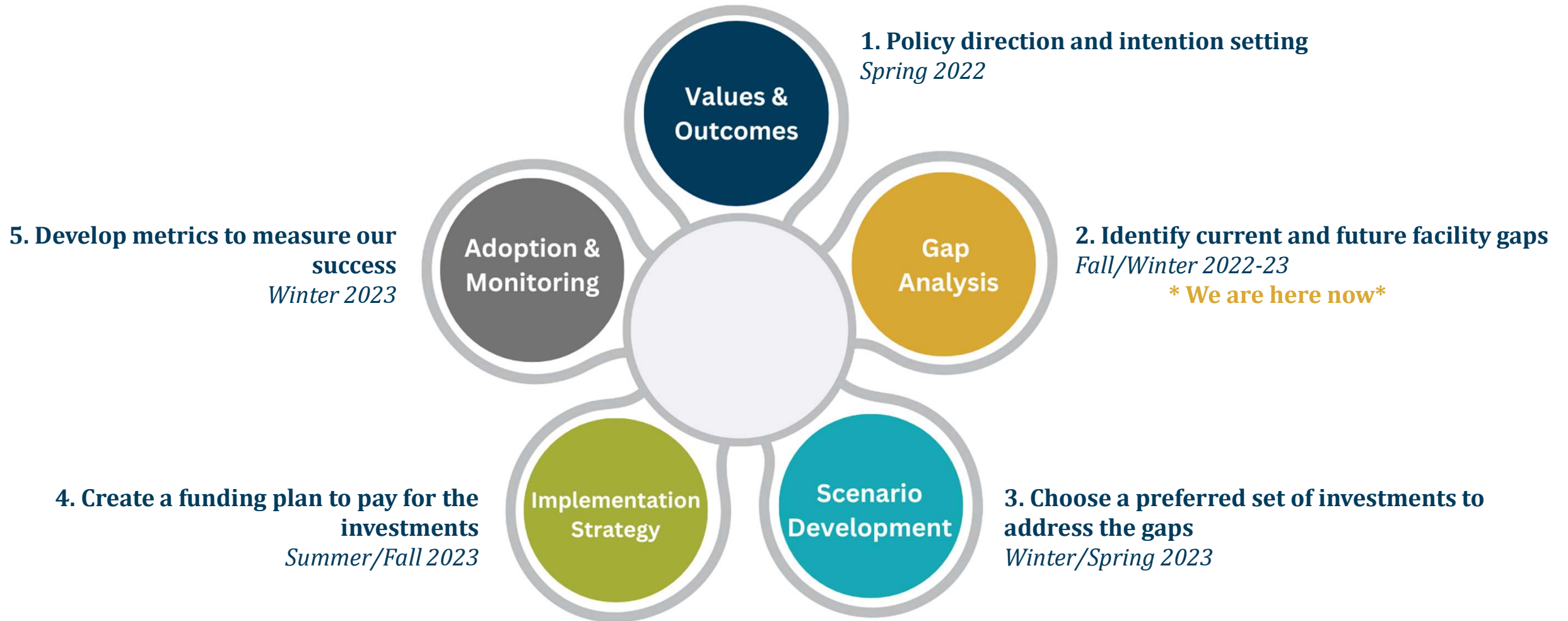
Phase 2 engagement

- What we did
- What we learned
- What's next

Questions & discussion



Project overview



Project overview



Healthy people and environment



Resource conservation



Environmental literacy



Economic well-being



Excellent service; equitable system access



Operational resilience



Community restoration



Community partnerships



Community investment



Tribal consultation

Values &
Outcomes



Metro

Garbage and Recycling System Facilities Plan

Project overview



Tribal Consultation

Letters inviting consultation shared with 7 Tribes

- 2 accepted, 1 declined and offered comments

Possible areas of Tribal interest include:

- Protection of cultural, historical and natural resources
- Improved access to recycling and household hazardous waste services for Tribal members

This work is ongoing.



What We Did



Engage

Community
Partners

Business and
Industry

Local
Government

Reuse & Repair
Businesses

Metro Facility and Committee Engagements



Summarize

Roundtable Summaries

Private Industry Roundtable Summary
Garbage and Recycling System Facilities Plan

November 2022

Metro hosted a roundtable on November 3, 2022 to seek input from local garbage and recycling businesses. The focus of this meeting was to identify infrastructure or facilities needed to support garbage, recycling, reuse, repair, recycling, and composting services in the greater Portland region. The following is a high-level summary of what we heard.

Existing facility gaps

At the roundtable, we heard about existing gaps including:

- There is only one facility in the region that accepts asbestos, and its location in Hillsboro can be a barrier.
- Space and separation from commercial traffic are barriers for some operators in allowing public self-haul.
- A request for a curbside drop-off center that could pay for recyclable metals.
- Specialty haulers need more storage space for hard-to-recycle items, as well as coordination on collection of these items to achieve a cost-effective volume and to weather changes in price for materials.
- Specialty haulers have difficulty finding someone who will accept recyclables like plastic film and pit toilets.
- More centralization of collection sites would benefit specialty haulers so different types of items/materials can be received at a single location.
- It's difficult to find donation centers that will consistently accept large reuse items like couches and mattresses.
- Gaps related to amenities at Metro transfer stations:
 - Request to retain the truck wash at Metro South.
 - Suggestions for expanding reuse options, like adding a reuse room at transfer stations.
 - Specialty haulers would benefit from alternative testing opportunities at transfer stations.

Other system gaps

- Education needed
- Specialty haulers would benefit from knowing where various items are accepted.
- Metro has an important role in providing public education that helps facility operators reduce contamination and hazards - such as from batteries.
- More public education is needed about where customers can take items for reuse.

Policy and regulatory barriers concerns

- The DEQ classification of a specialty hauler as a transfer station imposes unreasonable requirements.
- Collaboration between Metro and DEQ on sharing required reporting would help lessen the burden on facility operators.
- Private transfer station operators would like to capture more of the waste stream currently processed at Metro-owned facilities and feel they could operate more efficiently than the public sector.
- Transfer station operators need to know the future regulatory environment and markets to make significant investments in their facilities.
- Materials Recovery Facility operators face economic pressures from low or uncertain commodity prices, gaps on net waste, as well as disposal costs for garbage.
- Despite for collecting hard-to-recycle items are not likely to cover the cost to operate.

oregonmetro.gov

Phase 2 Engagement Summary Report

Metro Garbage & Recycling System Facilities Plan
Phase 2 Engagement Summary Report

January 2023

Convenience, Access, Affordability.
Everyone, no matter where they live in the region, should have equitable access to garbage and recycling facilities and services. But to get there, we need a plan.

Overview
Metro is developing a Garbage and Recycling System Facilities Plan to understand the investments needed to ensure better access to services in our garbage and recycling system. The project will look at the region's current public, private and non-profit garbage, recycling and reuse infrastructure. Identify service gaps and present potential approaches and a plan for future system investments.

Future investments may include construction of new facilities, incorporation of new services in existing facilities and identifying non-facility-based alternatives in some cases.

Throughout the plan development, Metro is engaging potentially affected and interested individuals, communities and organizations, as well as local governments, businesses, reuse organizations and advocacy organizations. Additionally, several Metro advisory groups are providing input at key decision points.

This report summarizes the engagement completed in Phase 2 from September 2022 to January 2023. The work in this phase was focused on outreach to diverse audiences to help identify gaps and facility needs in the regional garbage and recycling system.

Gap
Analysis



Metro

Garbage and Recycling System Facilities Plan

What We Did



Analyze

Most common facility gaps:

1. More places to take residential self-haul waste
2. More locations to drop-off large household items (bulky waste)
3. More places to take hard-to-recycle items (eg. old clothes, medicines, sharps, residential construction waste)
4. Improved services and amenities at transfer facilities (new and existing)
5. More household hazardous waste facilities
6. Warehouse spaces for reuse and repair



Share

- Roundtable and meeting participants
- Community Advisory Group
- Regional Waste Advisory Committee
- Committee on Racial Equity
- Metro Policy Advisory Committee
- Metro Council



Gap
Analysis



Metro

Garbage and Recycling System Facilities Plan

What We Learned

1) More locations for:

- Residential self-haul
- Large household items
- Hard-to-recycle items
- Household hazardous waste

2) Improved services and amenities:

- Prioritize recovery
- Partnerships at facilities
- Amenities for staff

3) Warehouse space:

- Storage for reuse
- Space for sorting
- Repair hubs



What We Learned

1) More locations for:

- Residential self-haul
- Large household items
- Hard-to-recycle items
- Household hazardous waste



"Illegal dumping of garbage is an issue for communities throughout the region, and illegal dumping of household hazardous waste is especially concerning. More facilities with more equitable access could help reduce illegal dumping."

- Local Government roundtable participant

Gap
Analysis



Metro

Garbage and Recycling System Facilities Plan

What We Learned

2) Need improved services and amenities:

- Prioritize recovery
- Partnerships at facilities
- Amenities for staff

"Partnerships with the public sector or volunteers (like master recyclers) could help staff and offset rising costs to private industry in making depots available to the public."

- Business and Industry roundtable participant

"We should do more recovery for reuse at transfer stations: there are so many reusable items (like furniture, bicycles) that come through here that we see every day."

- Metro South staff member



Gap
Analysis



Metro

Garbage and Recycling System Facilities Plan

What We Learned

3) Need warehouse space:

- Storage for reuse
- Space for sorting
- Repair hubs



"We need a hub for people to drop off, sort and store items for reuse. Then, organizations with outlets to consumers could pick up materials for sale or distribution."

-Reuse and Repair roundtable participant

"Need to prioritize reuse and repair at facilities to combat culture of excess buying and consumerism."

-Community Advisory Group member

Gap
Analysis



Metro

Garbage and Recycling System Facilities Plan

What's Next: Technical Analysis

Current State

- What facilities exist today?
- How much is being recycled, composted or reused compared to landfilled?

Needed Facilities

- What facilities are needed to reduce the demand for garbage services and focus on more reuse, repair and recycling?

Priority Materials

- What materials should Metro focus on for infrastructure investments?



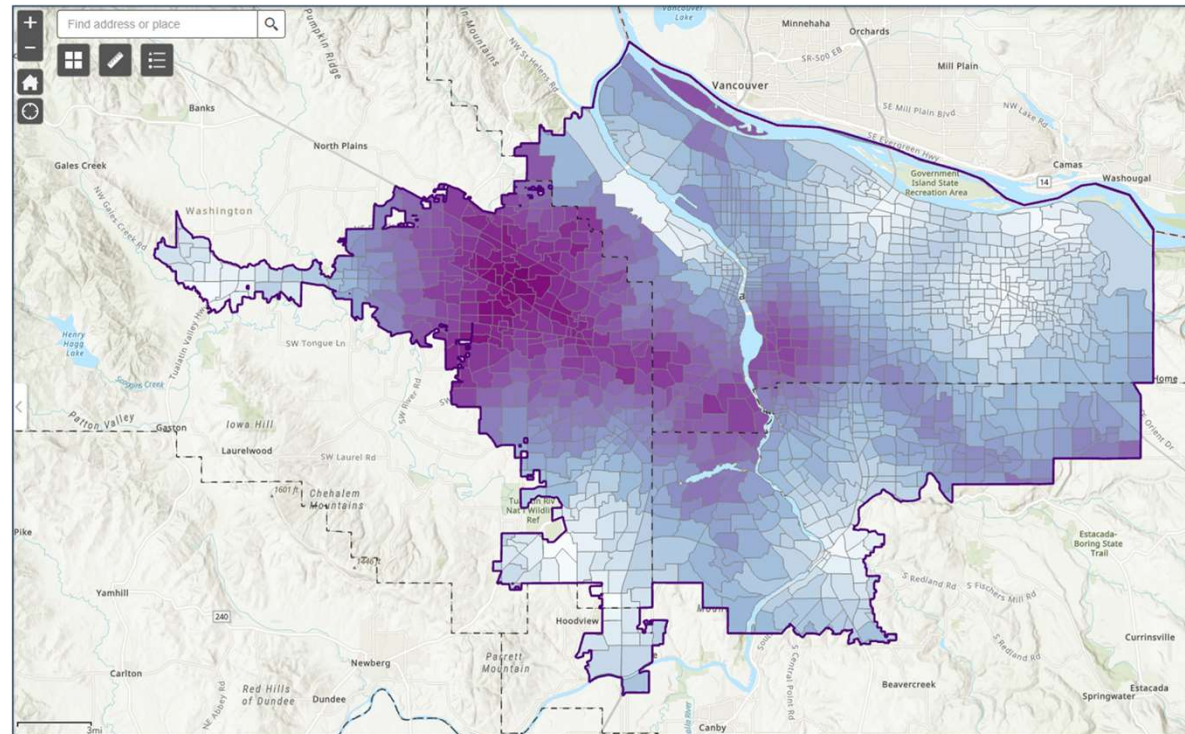
Gap
Analysis



What's Next: Preview

Access to facilities

**Travel Times
to Transfer
Facilities
(in minutes)**



Legend

- ☒ Metro_Boundary
- ☒ Time_to_Transit_facility
- 28 - 1.0

Gap
Analysis



Metro

Garbage and Recycling System Facilities Plan

What's Next: Preview

Case Studies from other jurisdictions



 **King County**



metrovancouver

Gap
Analysis



Metro

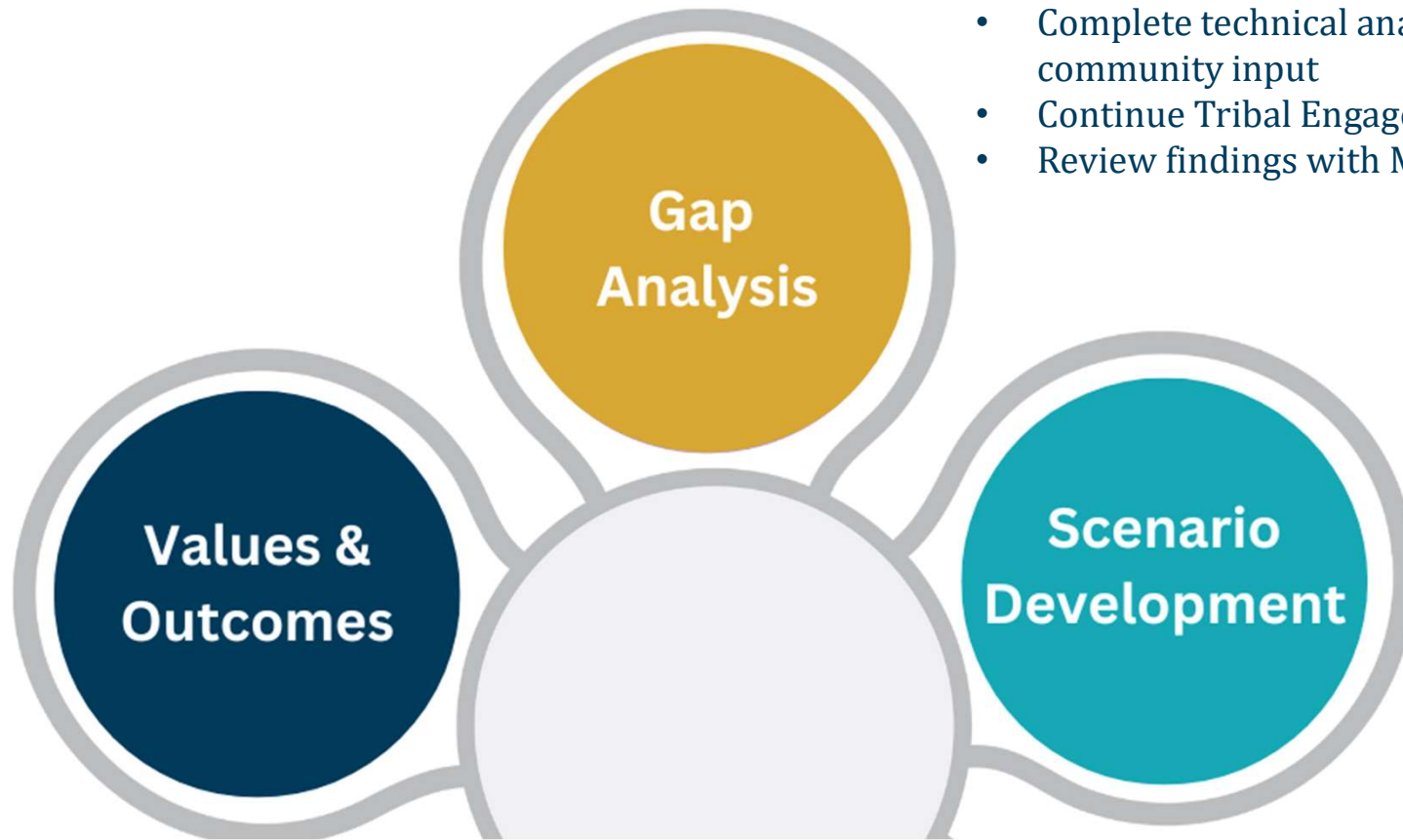
Garbage and Recycling System Facilities Plan

What's Next: Phases 2 & 3

2. Identify current and future facility gaps

Fall/Winter 2022-23

- Complete technical analysis using community input
- Continue Tribal Engagement
- Review findings with Metro Council



3. Choose a preferred set of investments to address the gaps

Winter/Spring 2023

- Develop draft scenarios
- Engage stakeholders
- Continue Tribal Engagement
- Seek decision by Metro Council



Questions

How do the identified gaps and themes align with what you hear from your constituents?

Do you have any general questions or feedback?



thank you

Project website: oregonmetro.gov/systemfacilitiesplan

