



I-205 Toll Project: Regional Transportation Plan (RTP) Amendment

MPAC

Presenters:

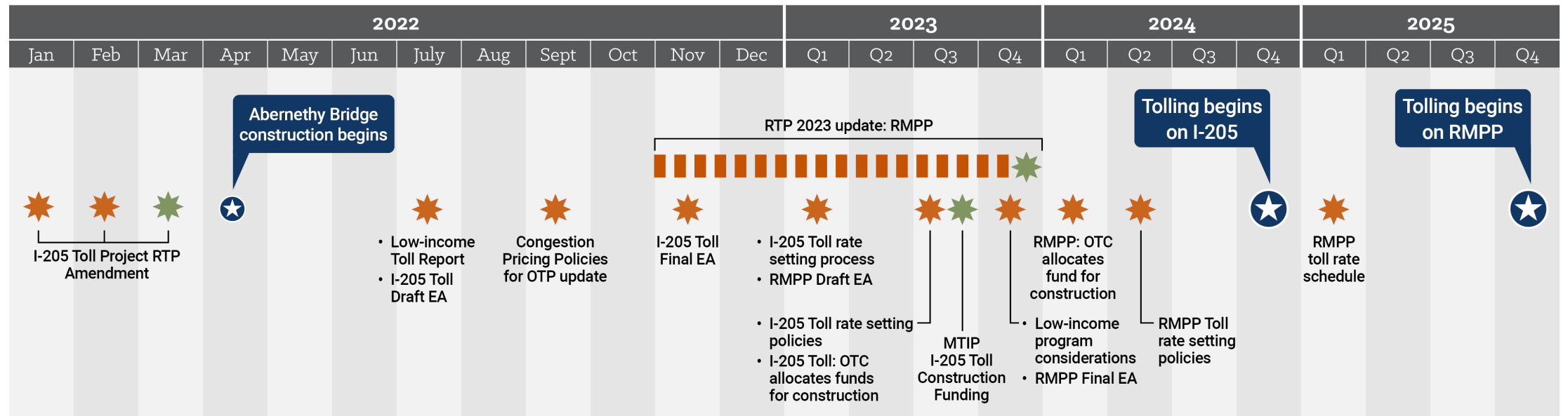
Mandy Putney (she/her)

Della Mosier (she/her)

January 26, 2022

This is one of many opportunities to comment on the I-205 Toll Project.

Metro Engagement Opportunities



LEGEND

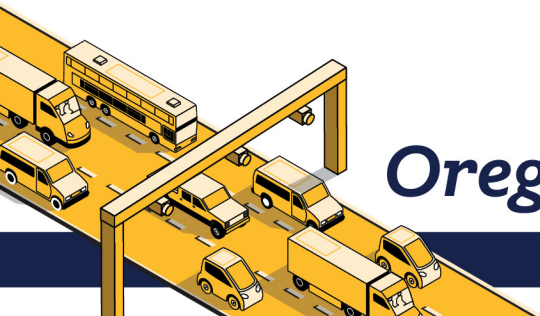
★ Engagement milestone with Metro

✱ Metro formal action

Oregon Toll Program

ODOT Commitments – 205 Toll Project

- Incorporate Equity Framework developed by Equity and Mobility Advisory Committee
- Determine multimodal mitigation projects and timeline in cooperation with local jurisdictions and transit
- Develop and implement diversion monitoring program by end of 2024 and before I-205 Tolls are collected
- Continue to share analysis and information as it is updated
- Engage partners as tolling program policies are developed, including
 - Income based toll rates
 - Oregon Highway Plan/Oregon Transportation Plan updates
 - Ongoing updates on toll rate setting process, including other toll discounts
- Collaborate with transit agencies and local jurisdictions to identify transit and multimodal solutions
- Continue to develop a project that supports climate change goals through emission reductions



Oregon Toll Program

I-205 Toll Project RTP Amendment

Background

- I-205 Improvements Project is already in the 2018 RTP, for preliminary engineering and construction phases, and is assumed in regional land use and transportation plans
- 2018 RTP project description states source of construction funds are unknown
- HB 3055 (2021 Legislative Session) creates financial link between I-205 Improvements and tolling
- Metro staff has recommended approval for this amendment based on a review of consistency with RTP policy



Oregon Toll Program

I-205 Toll Project RTP Amendment

What is in the proposed amendment?

- Adds I-205 Toll Project to the fiscally constrained list (PE phase only)
- Connects construction financing for Phase 1A of I-205 Improvements Project
- Clarifies purpose – to manage congestion and raise revenue
- Describes analysis to be completed under NEPA process
- Next step: describe partner coordination to identify mitigation projects (transit/multimodal investments) and incorporate equity framework



Oregon Toll Program

What does this amendment fund?

- Continued planning for tolling implementation in Oregon
- Inclusive, equitable community engagement
- Further analysis on diversion and potential mitigation for impacts
- Development of potential multimodal strategies
- Development of low-income toll rate strategies
- Completion of Environmental Assessment with partner agency and public input
- Preliminary design of the tolling gantries for I-205
- Traffic and revenue study to understand funding potential and schedule for construction of other phases of I-205 improvements



Oregon Toll Program

What happens if we delay the I-205 Toll Project environmental analysis?

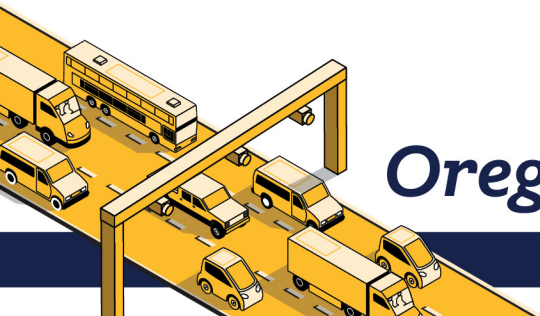
- Inability to finalize traffic analysis, develop mitigation commitments, and answer outstanding questions about benefits and impacts
- Inability to reduce congestion, or improve reliability and safety because I-205 Improvements Project will not be implemented
- I-205 Improvement costs increase, likely resulting in a higher toll



Oregon Toll Program

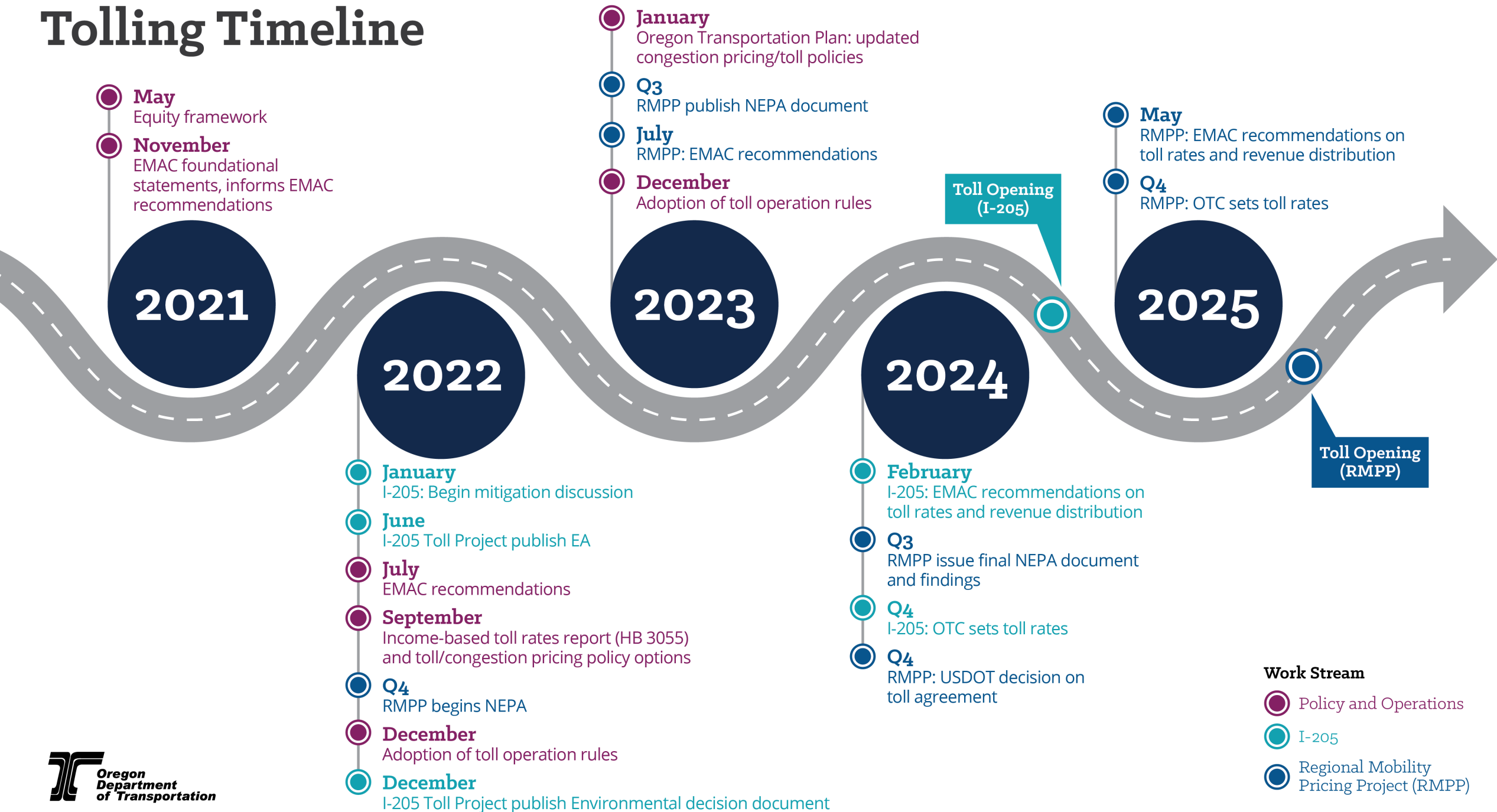
What's next?

- Coordinating with people who are most impacted, the Equity and Mobility Advisory Committee, and transit service and transportation option providers to **identify mitigation measures to offset potential impacts**
- Mitigation measures and the full analysis is published for public comments as a **draft Environmental Assessment in June-July 2022**
- Income based toll setting draft report available for review **summer 2022**



Oregon Toll Program

Tolling Timeline



Please contact us with your questions

Mandy Putney, Urban Mobility Office Director of Strategic Initiatives

Mandy.Putney@odot.Oregon.gov
503.720.4843



Della Mosier, ODOT Urban Mobility Office Deputy Director

Della.D.Mosier@odot.Oregon.gov
503.731.8309



Oregon Toll Program

