

2018 Regional Transportation Plan Amendment: I-205 Toll Project

**Joint Policy Advisory Committee on
Transportation (JPACT)**

Presenters:

Brendan Finn (he/him)

Mandy Putney (she/her)

October 21, 2021



ODOT Urban Mobility Office

Our charge



Equity



Safety



**Climate
Change**



**Reliable
Funding**




Congestion

ODOT's Core Portland Metro Area Projects

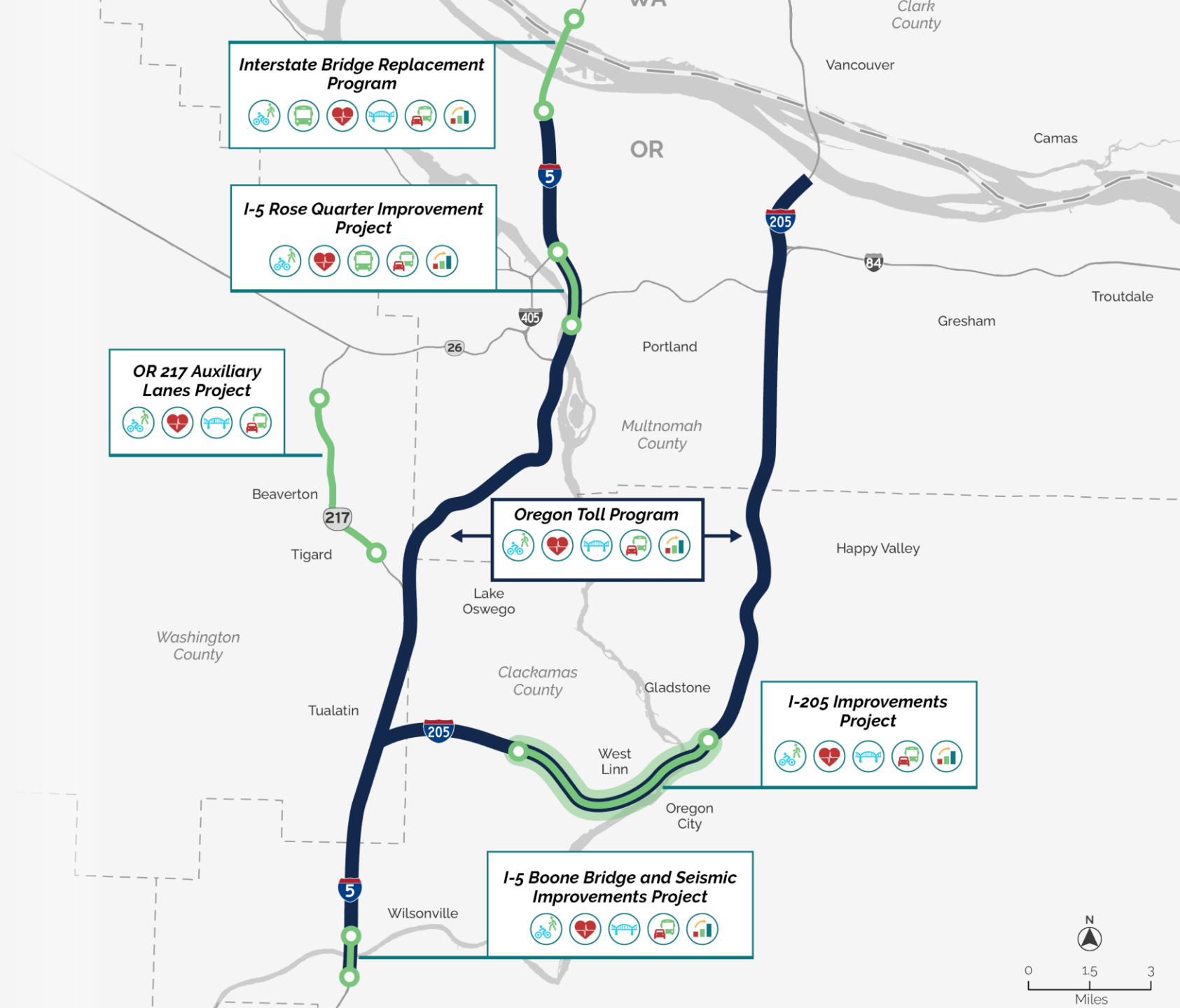
 Core Project

 Regional Mobility Pricing Project

 I-205 Toll Project

Project Elements

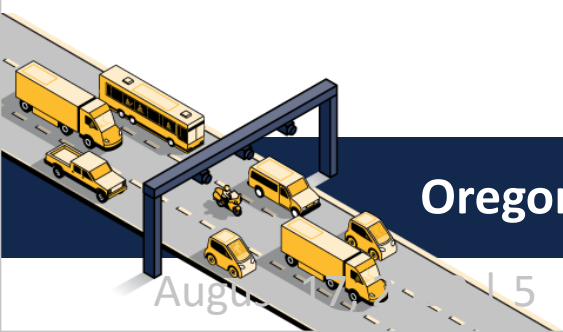
-  Bicycle and Pedestrian Improvements
-  Public Transportation Improvements
-  Safety Enhancements
-  Seismic Enhancements
-  Congestion Management
-  Funding Plan Includes Toll Revenue



Regional Mobility Pricing Project & I-205 Toll Project



When will it start?



Oregon Toll Program

www.OregonTolling.org

What will it pay for?



UMO core
improvement
projects



Transit and
multimodal
transportation
options

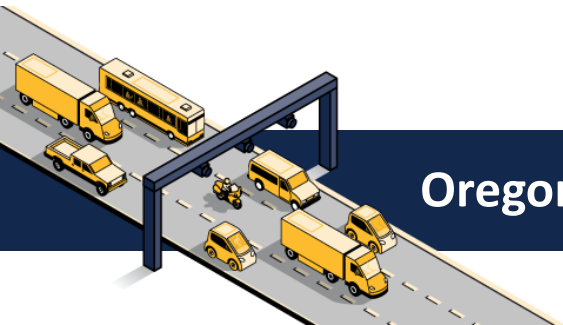


Neighborhood
health and
safety



People
experiencing
low income

*September 2022
report to OTC*



Oregon Toll Program

www.OregonTolling.org



**Equity and Mobility
Advisory Committee**

**Oregon Transportation
Commission**



Oregon Toll Program

www.OregonTolling.org

Congestion pricing/toll policy coordination

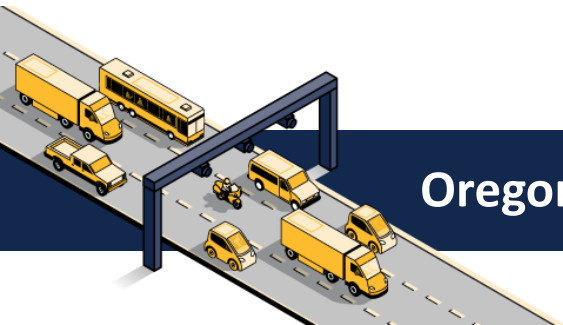
- ☐ Address diversion impacts to neighborhood health and safety
- ☐ Investment in transit and multimodal transportation
- ☐ Address impacts to affordability

Moving to Our Future:
Pricing Options for Equitable Mobility



Regional congestion pricing study

Metro is collecting information to determine if congestion pricing can reduce traffic and greenhouse gas emissions and increase safety and equity in our regional transportation system.



Oregon Toll Program

www.OregonTolling.org

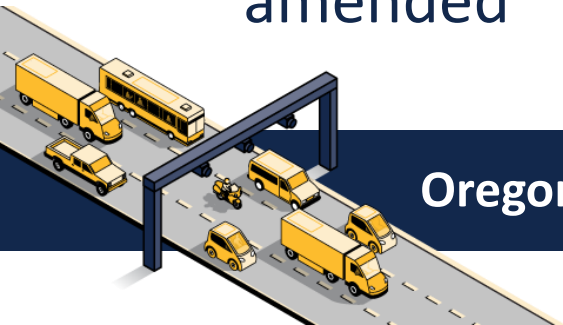
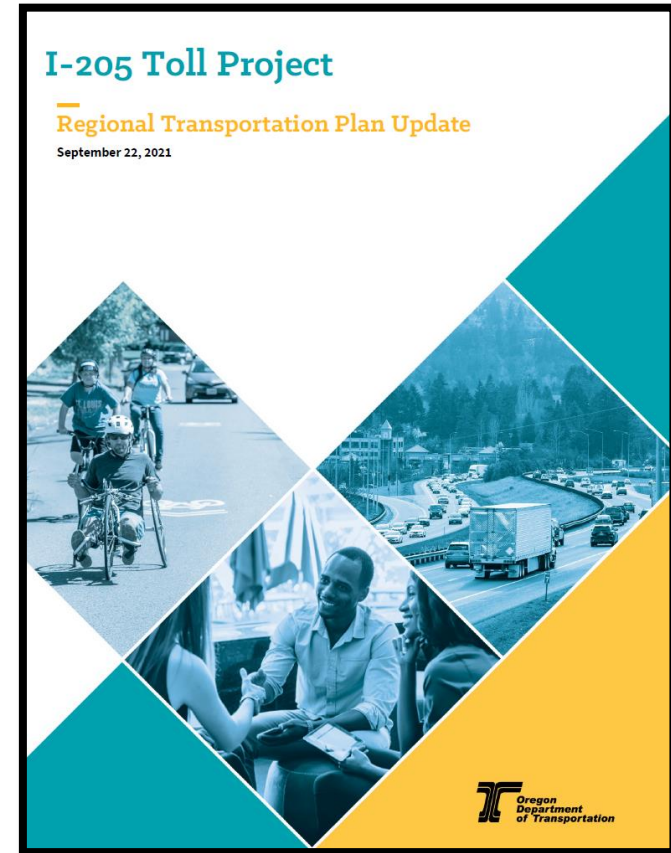


I-205 Toll Project RTP amendment

- October 2021 to February 2022
- TPAC, MTAC, JPACT, MPAC, and Metro Council

Why now?

- Align the federal documentation (NEPA analysis) for I-205 Toll Project and I-205 Improvements Project
- FHWA requires NEPA to be completed under a programmed PE phase
- The RTP needs to be updated so that the MTIP can be amended

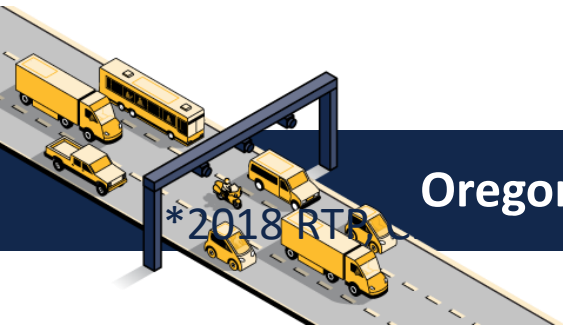


Oregon Toll Program

www.OregonTolling.org

RTP I-205 Improvements Description

Preliminary design work is underway to widen I-205 between OR 213 and Stafford Road and improve the I-205/Abernethy Bridge to ensure it remains functional after a catastrophic earthquake. The design work was funded **through HB 2017**; however, **construction funding for this project has not been identified.**



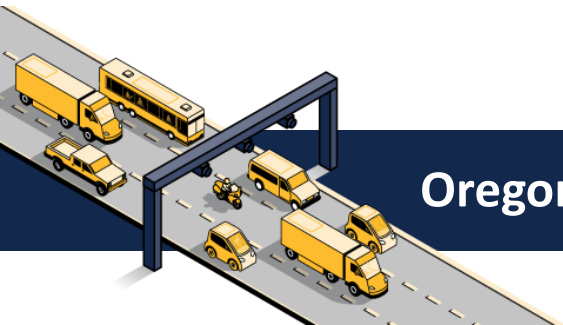
Oregon Toll Program

www.OregonTolling.org



Proposed edits

Preliminary design work is underway to widen I-205 between OR 213 and Stafford Road and improve the I-205/Abernethy Bridge to ensure it remains functional after a catastrophic earthquake. The design work is funded. Construction **financing for Phase 1A (Abernethy Bridge) is identified in HB 3055 (2021 Session). Variable Rate Tolls priced to manage travel demand as well as provide revenue will be used to fund the rest of the project (Phase 1B, 1C, 1D and Phase 2).**



Please contact us with your questions

Brendan Finn

Director, Urban Mobility Office

Brendan.C.Finn@odot.state.or.us

503.348.1991

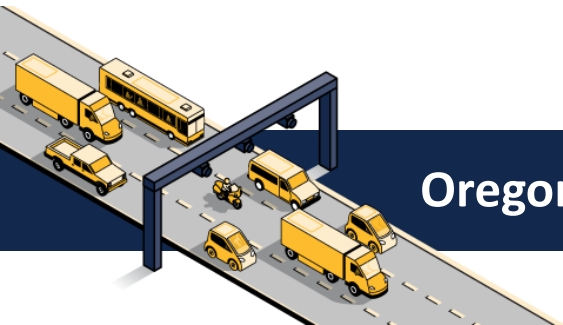


Mandy Putney

Urban Mobility Office Strategic Initiatives Director

Mandy.Putney@odot.state.or.us

503.720.4843



Oregon Toll Program

www.OregonTolling.org