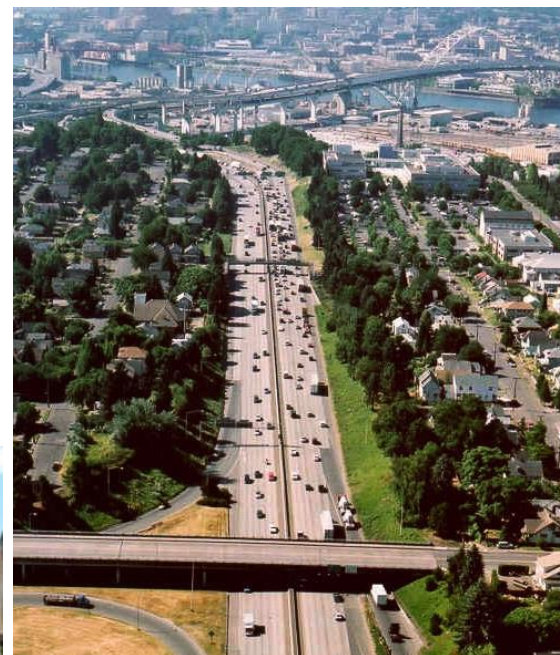
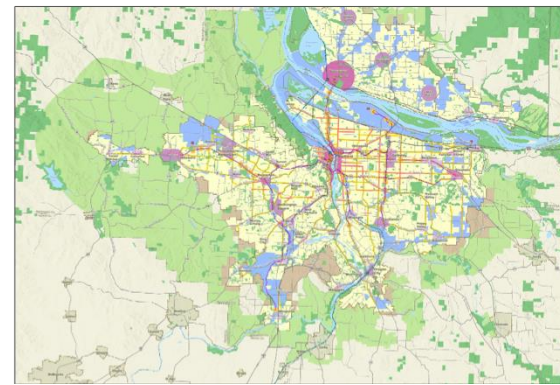


Regional mobility policy update

JPACT

April 15, 2021

Kim Ellis, Metro project manager
Glen Bolen, ODOT



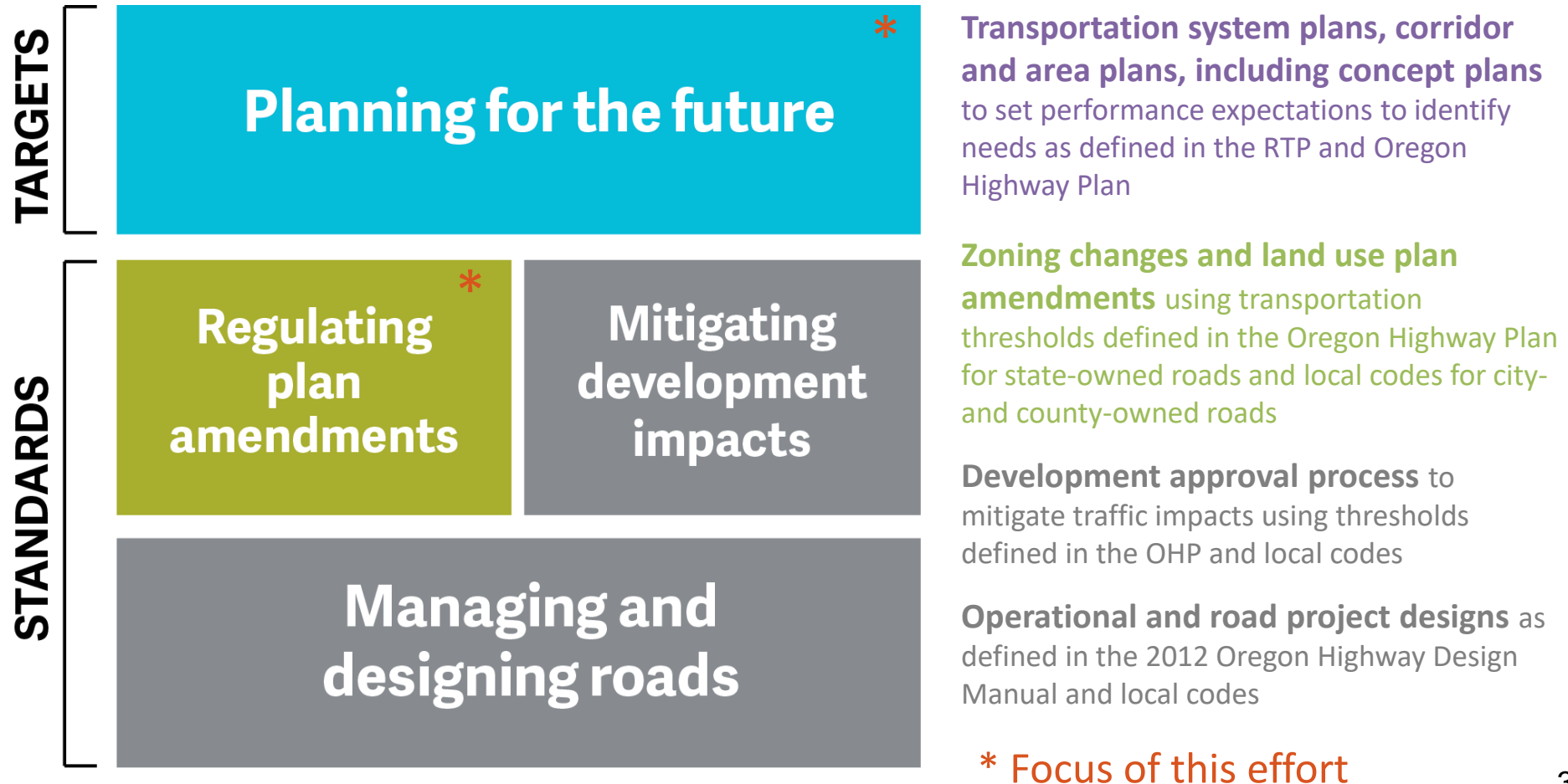
Project purpose

- Update the policy on how we define and measure mobility for the Portland area transportation system
- Recommend amendments to the RTP and Oregon Highway Plan Policy 1F for the Portland area

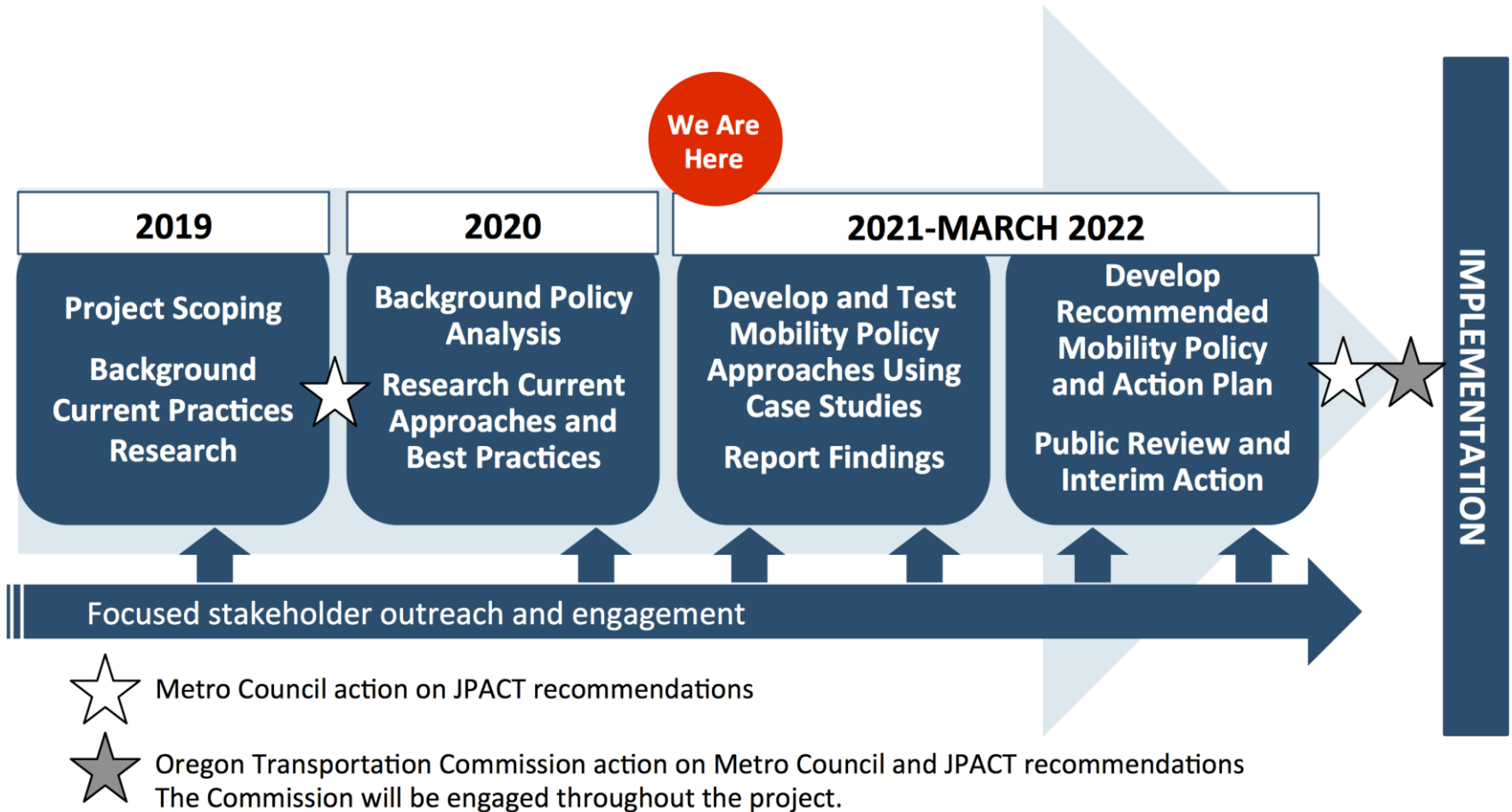


Visit oregonmetro.gov/mobility

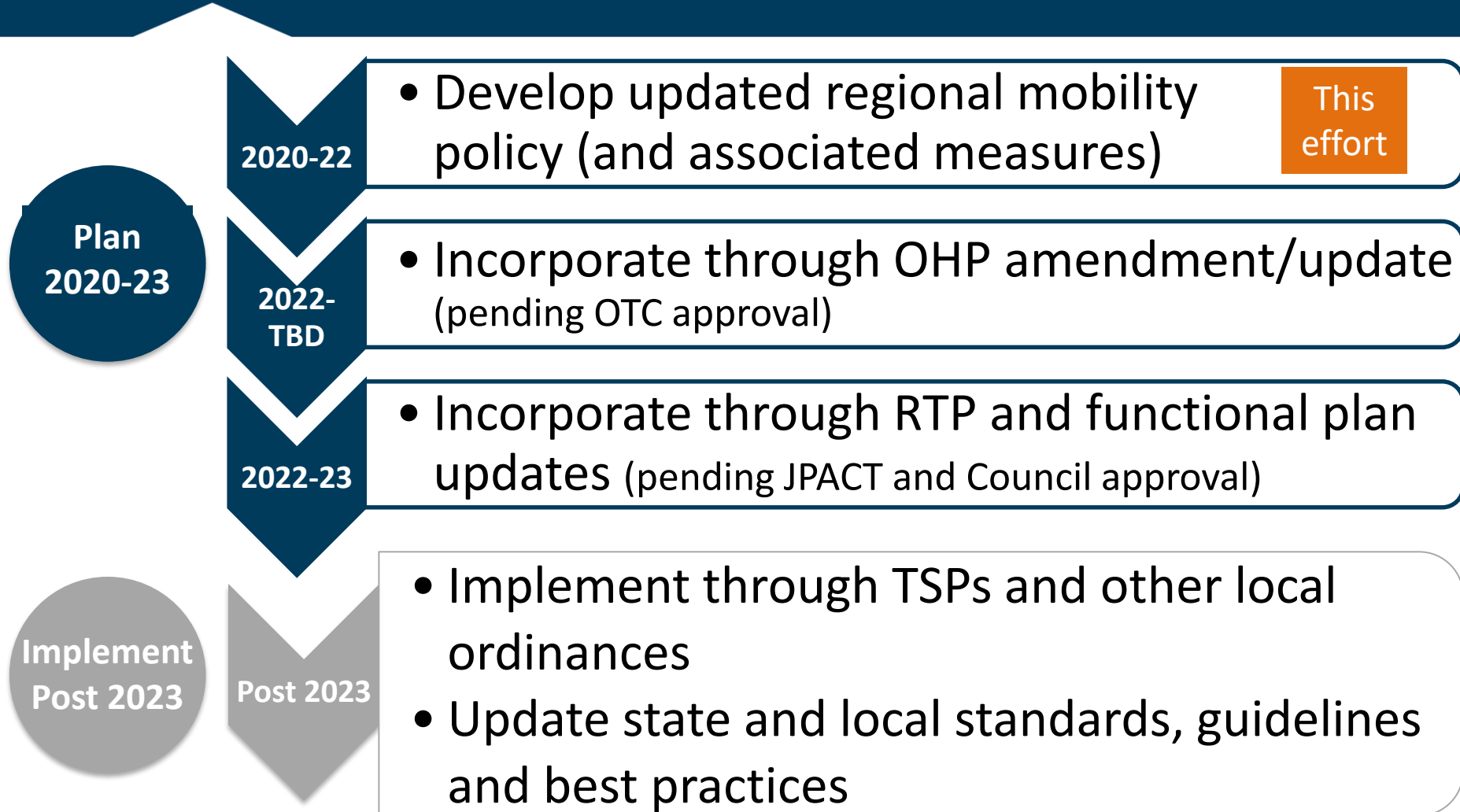
State and local decisions are connected to current congestion (mobility) policy



Project timeline



Where is this headed?

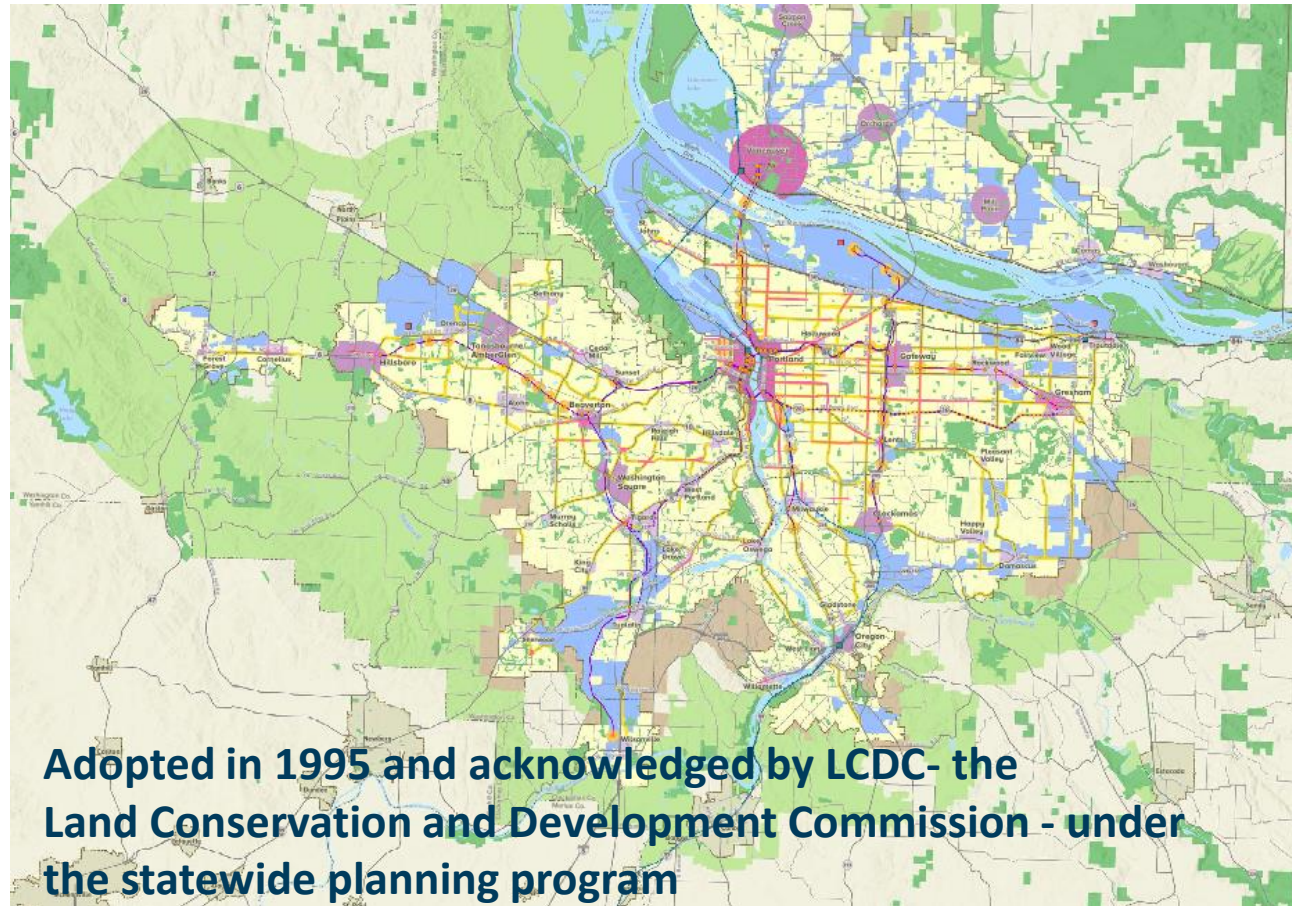


2040 Growth Concept is our foundation

Adopted as the land use plan for the region under state law (ORS 197)

Transportation plans must be adequate to serve planned land uses

Codified in regional plans governing cities and counties



2018 Regional Transportation Plan priorities



Equity



Climate



Safety



Congestion

Oregon Transportation Commission Strategic Action Plan Priorities...



Equity

Prioritize diversity, equity, and inclusion by identifying and addressing systemic barriers to ensure all Oregonians benefit from transportation services and investments.



Modern Transportation System

Build, maintain, and operate a modern, multimodal transportation system to serve all Oregonians, address climate change, and help Oregon communities and economies thrive.



Sufficient and Reliable Funding

Seek sufficient and reliable funding to support a modern transportation system and a fiscally sound ODOT.

...Oregon Transportation Commission Strategic Action Plan Priorities

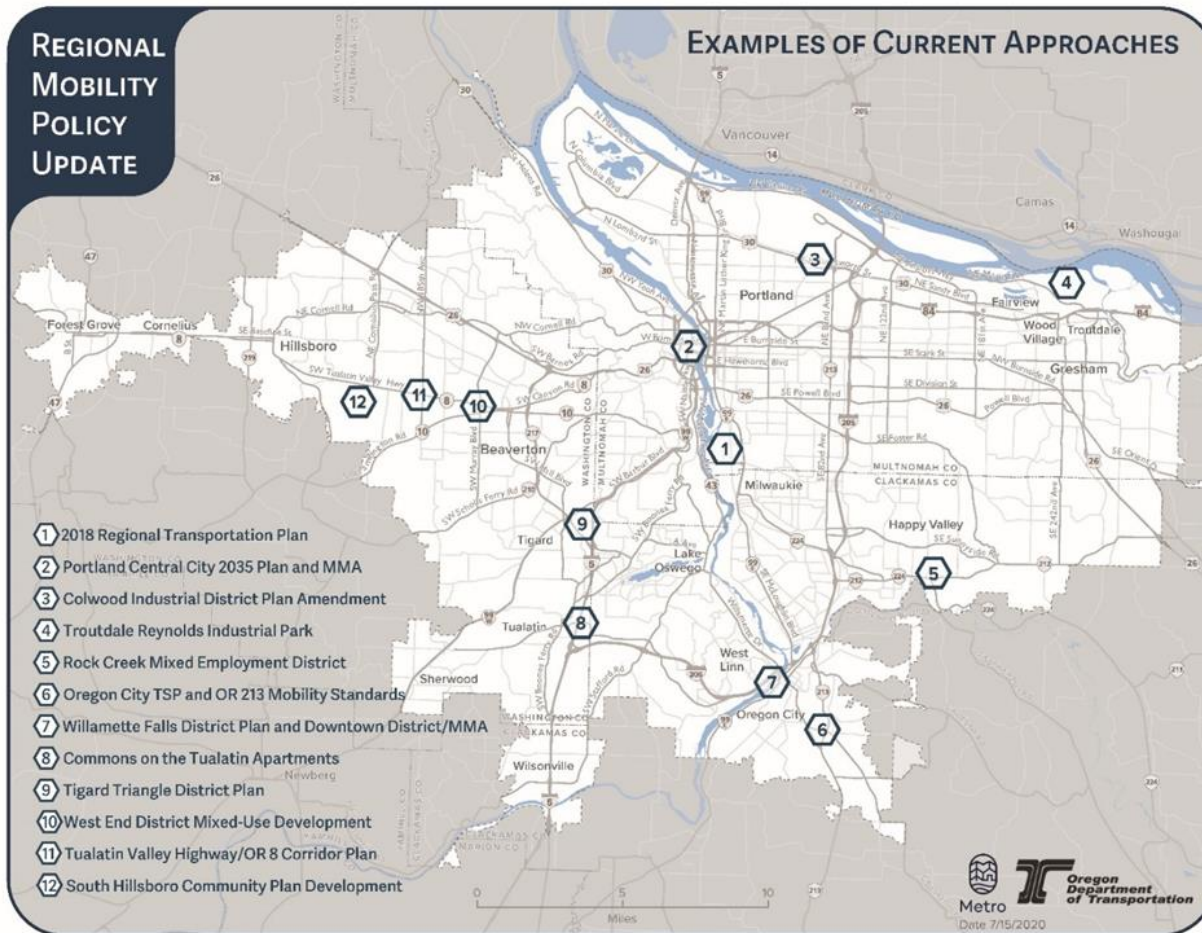


Modern Transportation System

Build, maintain, and operate a modern, multimodal transportation system to serve all Oregonians, address climate change, and help Oregon communities and economies thrive.

- **Preservation and Stewardship:** Preserve, maintain, and operate Oregon's multimodal transportation system and achieve a cleaner environment.
- **Safety:** Prevent traffic fatalities and serious injuries and ensure the safety of system users and transportation workers.
- **Accessibility, Mobility and Climate Change:** Provide greater transportation access and a broader range of mobility options for Oregonians and address climate change.
- **Congestion Relief:** Invest in a comprehensive congestion management strategy for the Portland metropolitan region to benefit all Oregonians. Implement system and operational innovations to reduce traffic congestion throughout Oregon.
- **Project Delivery:** Develop practical solutions to transportation problems in order to address community needs and ensure system reliability and resiliency.
- **Innovative Technologies:** Invest in and integrate technologies to improve transportation services and operations throughout Oregon.

Current approaches in the region



An overview and series of 12 factsheets will be posted on the project website soon!

oregonmetro.gov/mobility

Key Themes and Observations

from research on current approaches

- V/C measure is a useful diagnostic tool
- V/C ratio is more strictly applied as we move from system planning to project design



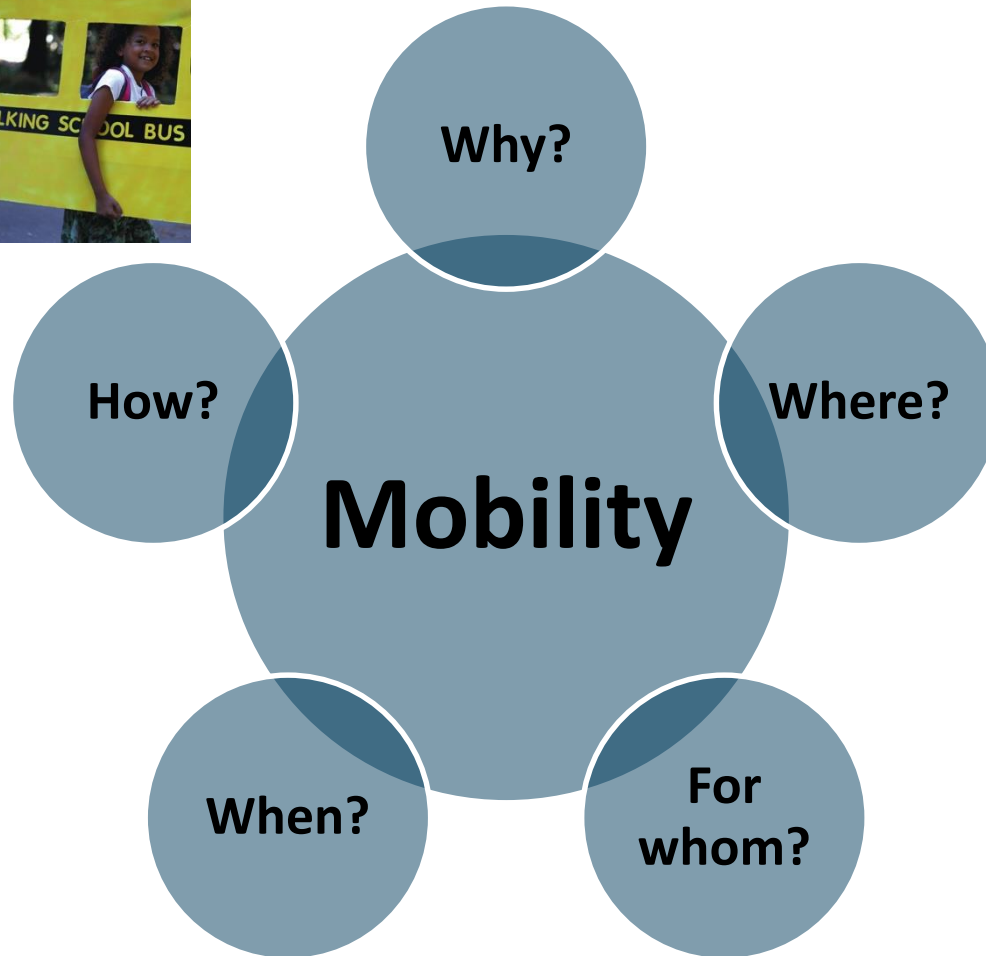
- Mobility is one of many policies and measures considered in system planning
- ODOT and local agencies would like more multi-modal measures that could be applied to plan amendments and development review
- Plan amendments should focus more on consistency with the local plans than the v/c measure

Stakeholder definitions of mobility

- “Getting to where you need to go safely, affordably and reliably no matter your [mode of travel], age, gender, race, income level, ZIP code...”
- "Mobility – focus on moving people and moving goods predictably and efficiently."
- "Efficient freight movement and access to industry and ports...play a key role in the state's economic development."



How do you *define* mobility?



Draft Mobility Policy Elements

Access

- All people and goods can get where they need to go.

Time Efficiency

- People and goods can get where they need to go in a reasonable amount of time.

Reliability

- Travel time is reliable or predictable for all modes.

Safety

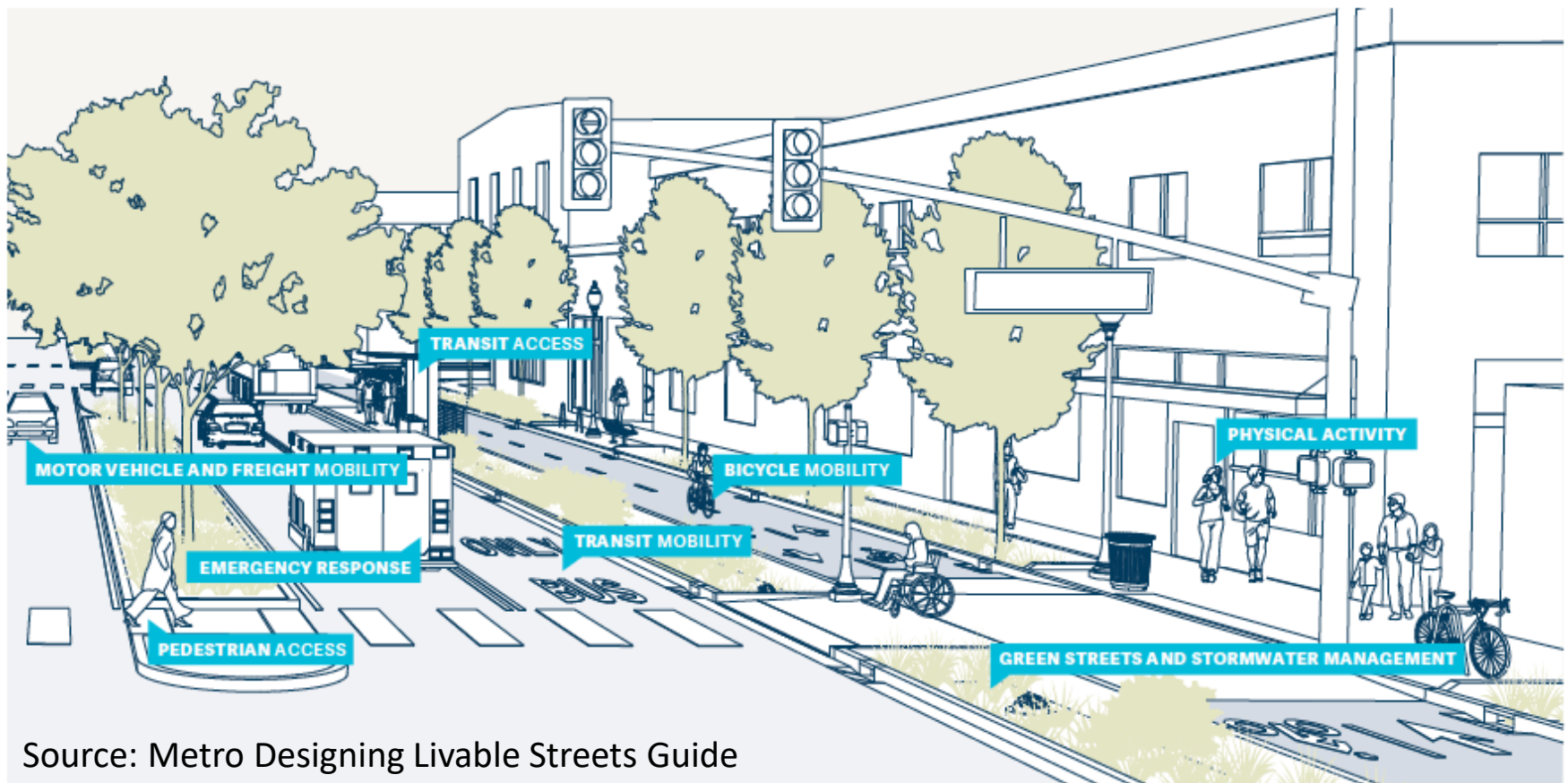
- Available travel options are safe for all users.

Travel Options

- People can get where they need to go by a variety of travel options or modes.

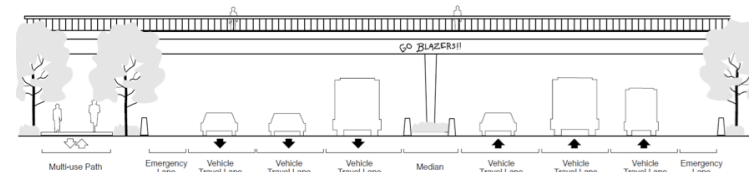
What does mobility look like?

Streets serve many different functions. Various functions and modes may be prioritized on different streets depending on planned land use context.



Source: Metro Designing Livable Streets Guide

How should we measure mobility in different contexts?



Source: 2018 Regional Transportation Plan (Chapter 3)

Draft Potential measures being considered for testing subject to further refinement

listed in order from
highest to lowest
screening score

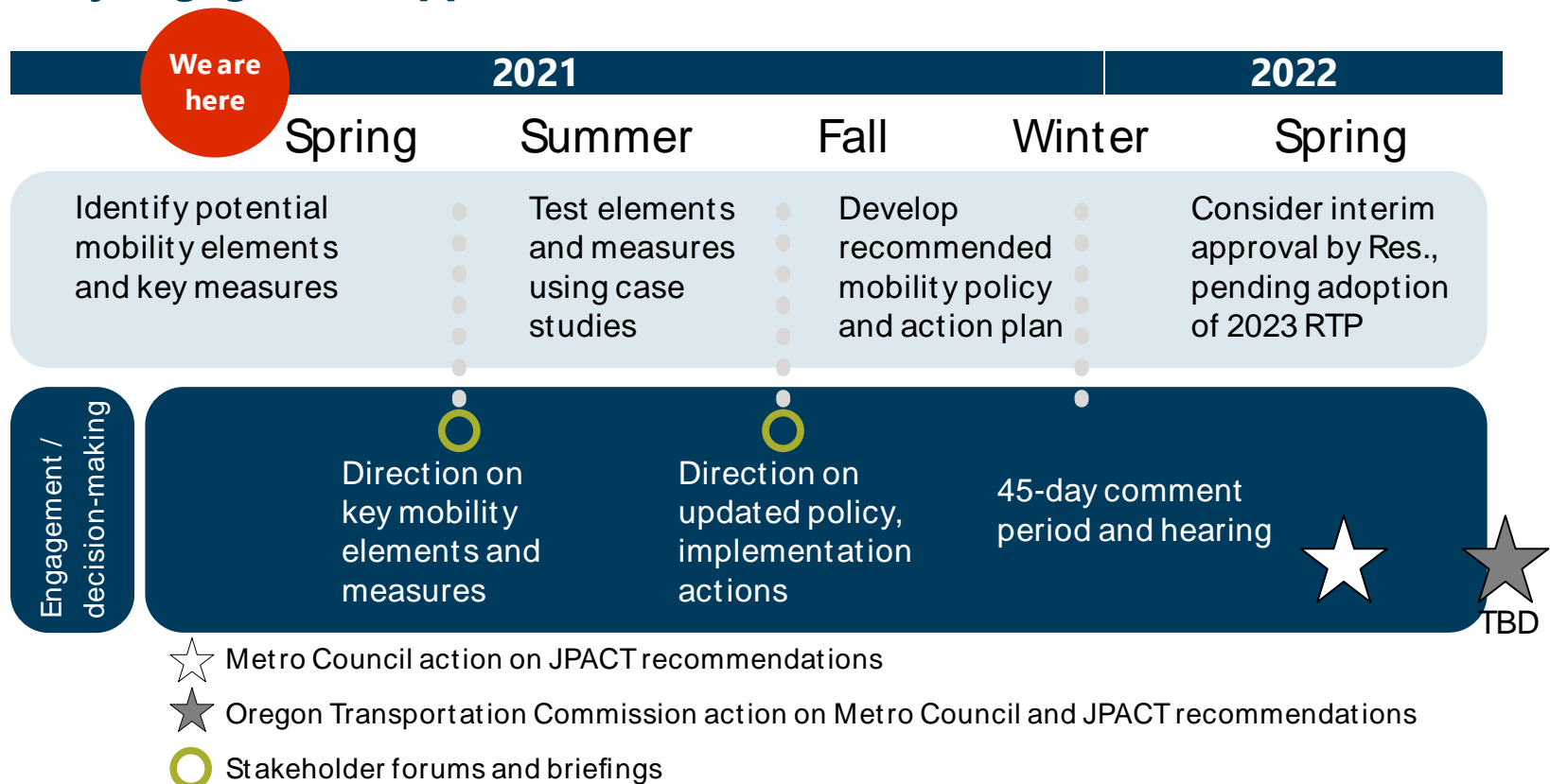
Yellow = updated from packet

Measure	Mobility Policy Elements					Planning Applications		
	Access	Time Efficiency	Reliability	Safety	Travel Options	System Planning / Scenario Testing/ Target	Needs Identification/ Project Identification	Plan Amendments/ Standard
Multimodal Level of Service (MMLOS)	●			○	All modes	●	●	
Level of Traffic Stress (LTS)	●	○		●	Bike, Pedestrian	●	●	●
Pedestrian crossing index	●	●		●	Pedestrian	●	●	●
System completeness	●	○		●	All modes	●	●	●
Travel speed			○	●	Vehicle, Freight, Transit	●	●	●
Accessibility to destinations	●	○			All modes	●	●	●
Hours of congestion/ duration of congestion		●	●		Vehicle, Freight, Transit	●	●	●
Travel time reliability			●		Vehicle, Freight, Transit	●	●	●
Vehicle miles traveled (VMT) per capita	○	●		○	Vehicle, Freight, Transit	●	●	●
Travel time		●			All modes	●	●	●
Volume-to-capacity ratio for roadway links		●	○		Vehicle, Freight	●	●	●
Volume-to-capacity ratio at Intersections		●	○		Vehicle, Freight	●	●	●

● direct measure ○ indirect measure

Engagement and outreach

Key engagement opportunities



JPACT kick-off discussion

1. Thinking about the different ways that people travel and goods move in our region:
 - **Are these the most important elements of mobility to include in the updated mobility policy?**
 - **Anything missing?**
2. Looking at the list of potential measures being considered for testing:
 - **Initial comments or feedback on the draft measures?**
 - **Anything missing?**

Thank you!

Kim Ellis, Metro

kim.ellis@oregonmetro.gov



Lidwien Rahman, ODOT

lidwien.rahman@odot.state.or.us



oregonmetro.gov

