

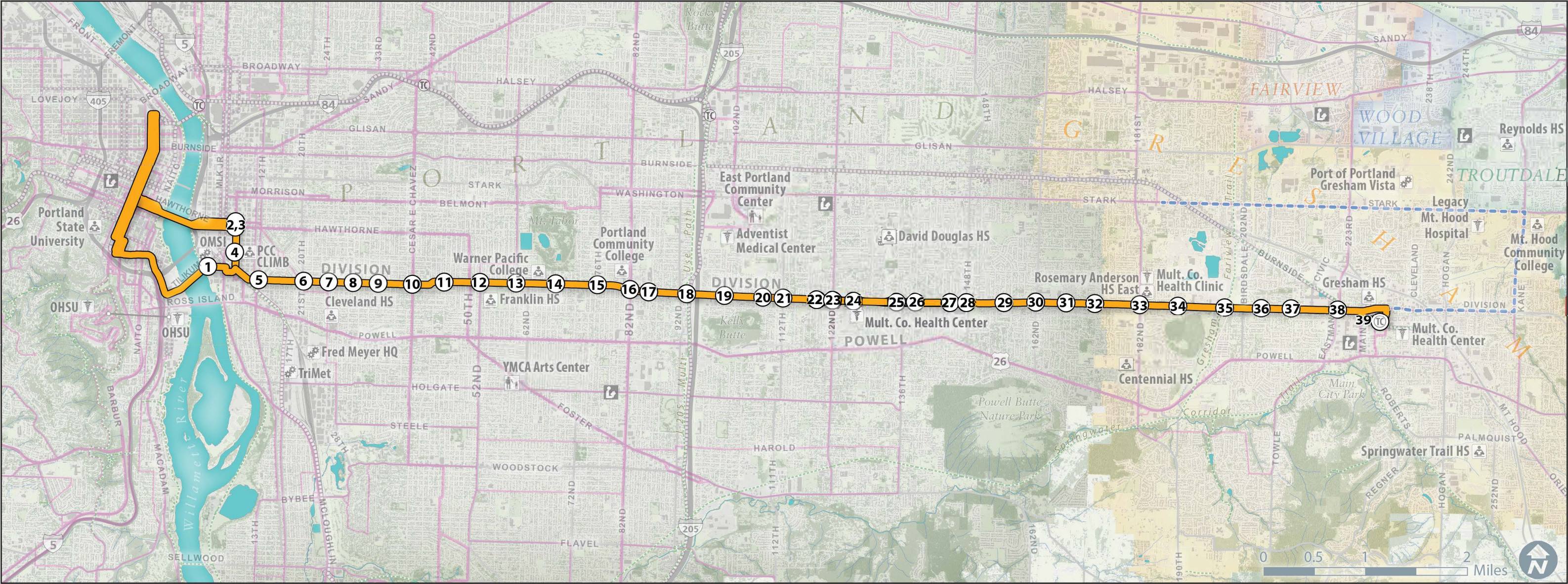
Staff Report
Ordinance No. 17-1396
Attachment 1

Powell-Division Steering Committee
Locally Preferred Alternative Text and Map

Powell-Division Steering Committee Locally Preferred Alternative

The recommended Locally Preferred Alternative for high capacity transit in the Powell-Division corridor is bus rapid transit with stations at the locations indicated on the attached map, operating between downtown Portland and the Gresham Transit Center. The route will operate on the transit mall (5th and 6th avenues) in downtown Portland, cross the Willamette River, and run on Division Street from SE 8th Avenue in Portland to the Gresham Transit Center.

Powell-Division Transit and Development Project: Recommended Locally Preferred Alternative



Map Key	Station Location	Map Key	Station Location	Map Key	Station Location	Map Key	Station Location
1	OMSI	11	Division & 45th	21	Division & 112th	31	Division & 167th
2	Madison & 7th	12	Division & 51st	22	Division & 119th	32	Division & 174th
3	Hawthorne & 7th	13	Division & 60th	23	Division & 122nd	33	Division & 182nd
4	Harrison & 7th	14	Division & 68th	24	Division & 127th	34	Division & 190th
5	Division & 12th	15	Division & 76th	25	Division & 135th	35	Division & Gresham-Fairview Trail
6	Division & 20th	16	Division & 82nd	26	Division & 139th	36	Division & Bella Vista
7	Division & 26th	17	Division & 85th	27	Division & 145th	37	Division & Wallula/212th
8	Division & 30th	18	Division & MAX	28	Division & 148th	38	Division & Eastman
9	Division & 34th	19	Division & 101st	29	Division & 156th	39	Gresham Transit Center
10	Division & Chavez	20	Division & 109th	30	Division & 162nd		

Elements of the Recommended Locally Preferred Alternative*

- Bus Rapid Transit Alignment (River crossing to be determined)
- Approximate station location
- Line 20 connection to Mount Hood Community College

- Light rail
- Streetcar
- Aerial tram
- Frequent bus
- Standard bus
- Regional trail

*Recommended by project Steering Committee on November 7, 2016