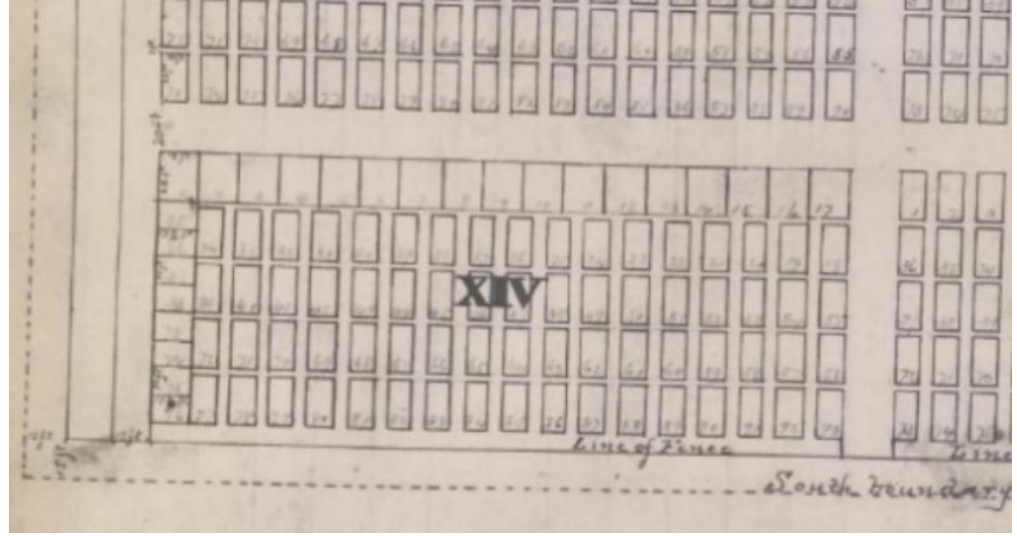


Cultural heritage and healing garden

文化遺產和療癒花園



Metro



Council Work Session – May 2024

Block 14 at Lone Fir Cemetery

朗花墓園第14區



Schedule

時程

Spring 2021
2021 春季

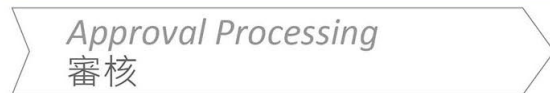


Summer 2024
2024 春季

Summer 2024
2024 夏季

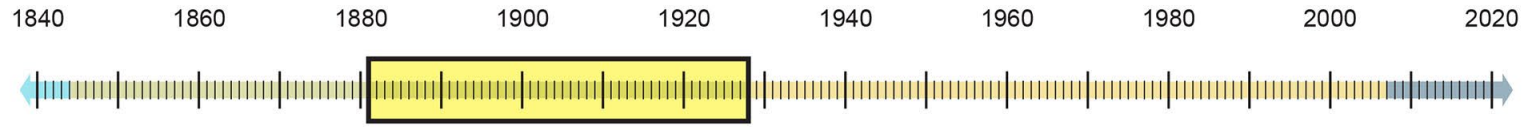


2026



Significance | 歷史意義



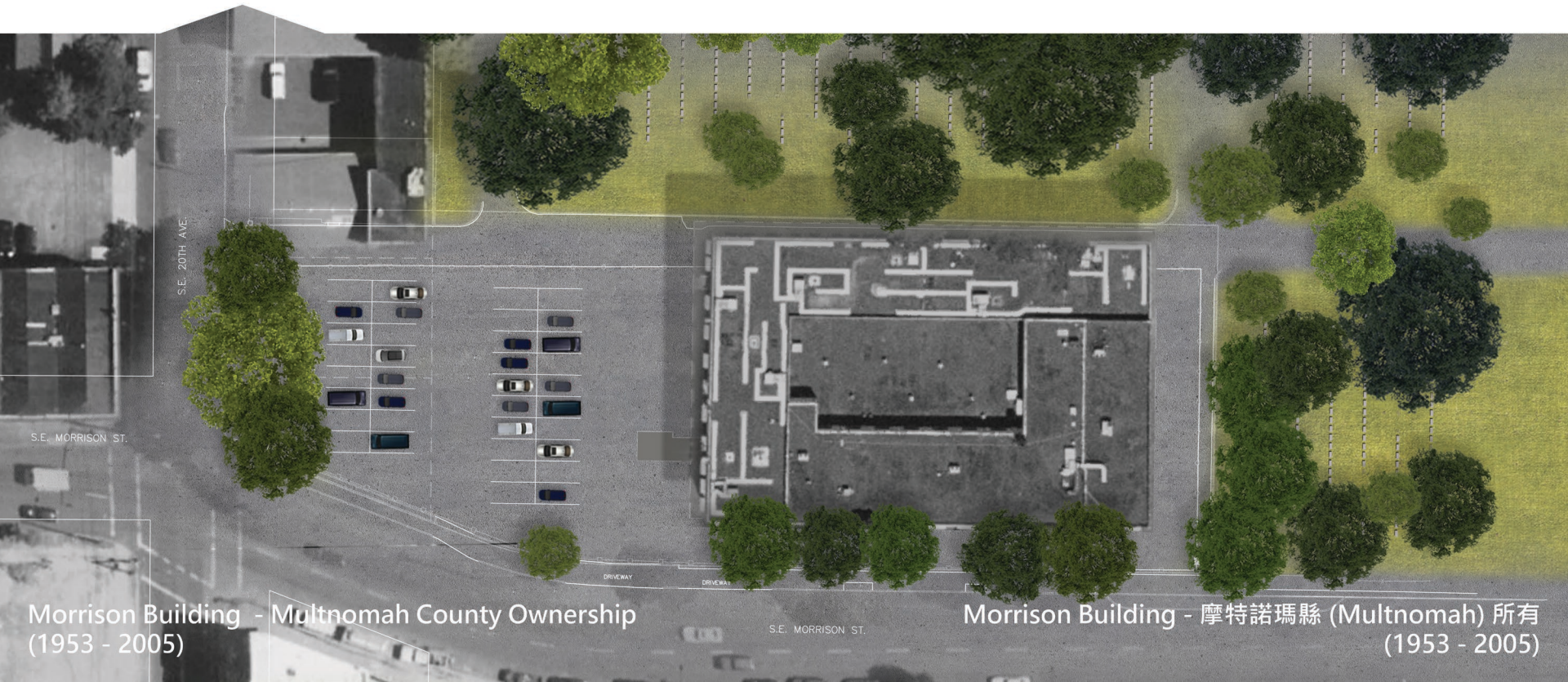


Chinese Burial Grounds
(1881 - 1928)

華人墓地
(1881 - 1928)



1840 1860 1880 1900 1920 1940 1960 1980 2000 2020



Morrison Building - Multnomah County Ownership
(1953 - 2005)

Morrison Building - 摩特諾瑪縣 (Multnomah) 所有
(1953 - 2005)



Block 14 - Metro Ownership
(2007 – present)

第 14 區 - Metro 所有
(2007)

History: OHI Patients

歷史：俄勒岡精神病院的患者

Approximate OHI patient burials:

粗估俄勒岡精神病院的患者埋葬人數：

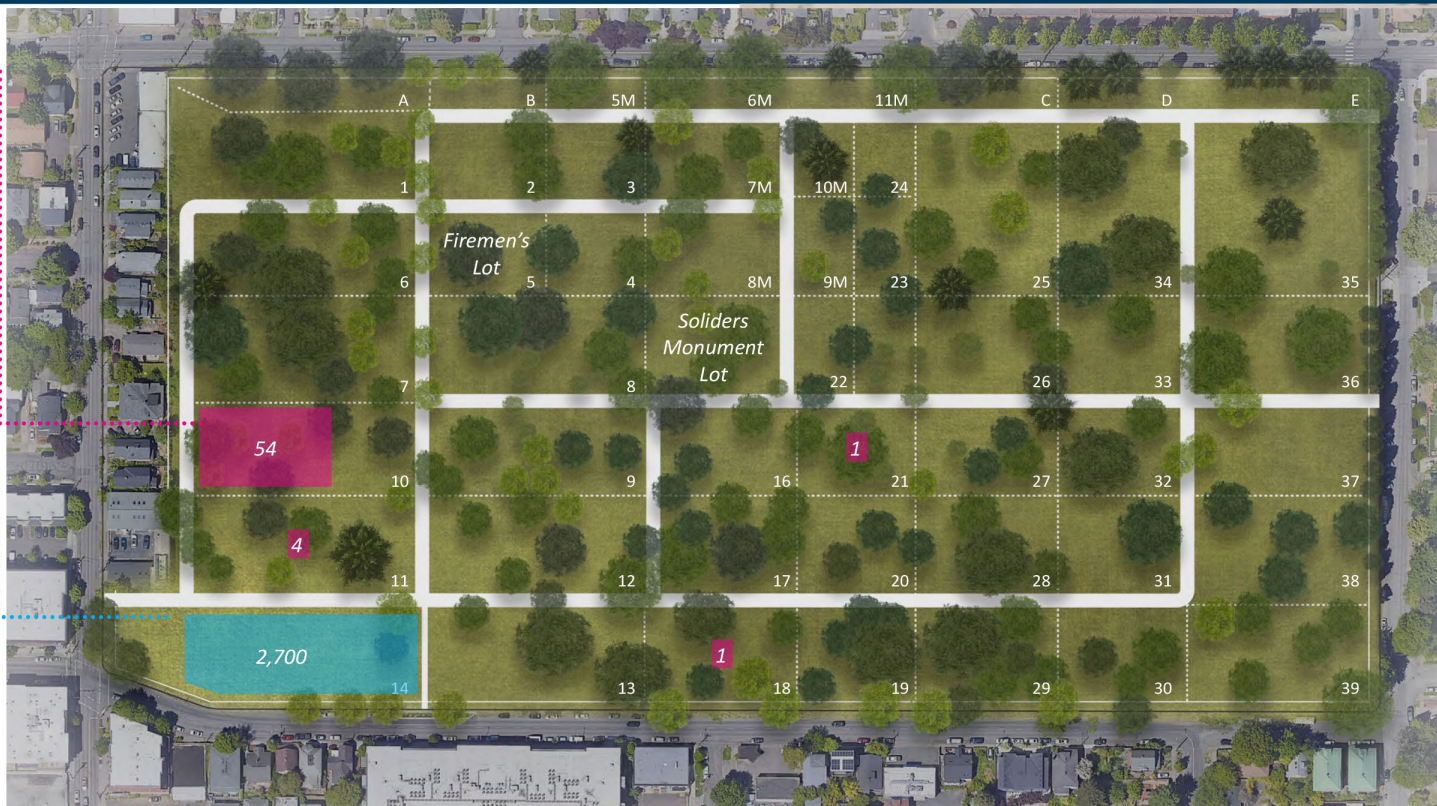
- Block 10: 54
- Block 11: 4
- Block 18: 1
- Block 21: 1

Block 14: Chinese Burial Grounds(1881 - 1928)*

第14區華人墓地 (1891-1928)

*Approximate Chinese burials :
粗估第14區華人墓地埋葬人數：
2,700

* Approximate based on incomplete records



Patient Recognition

- Equitably honor both Chinese people and hospital patients
- Publicly share patient burial research
- Fabricate & install patient headstones
- Create a welcoming and healing space for all with a therapeutic design a
- Provide interpretative information



Design to Protect Ancestors



Community Input

Recognize and honor those once buried at Lone Fir

Authentically tell the stories from the past in order to learn and heal

Desire to conduct ritual with traditional altar space for offerings and burning incense



Design Options



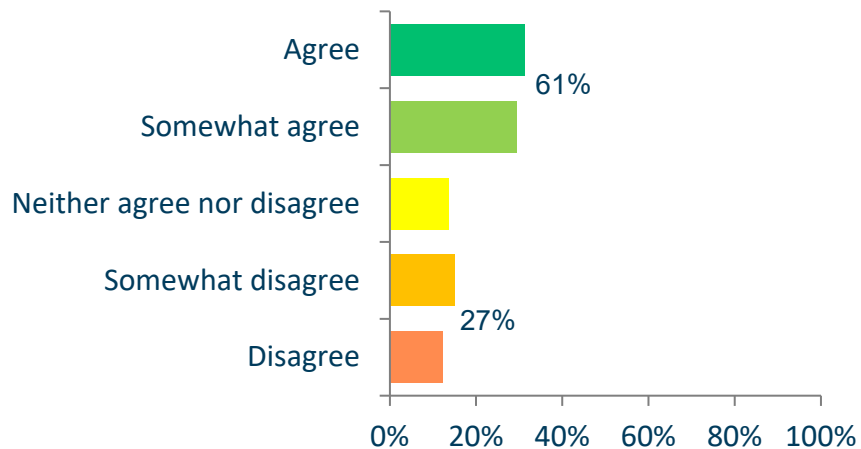
The Hill



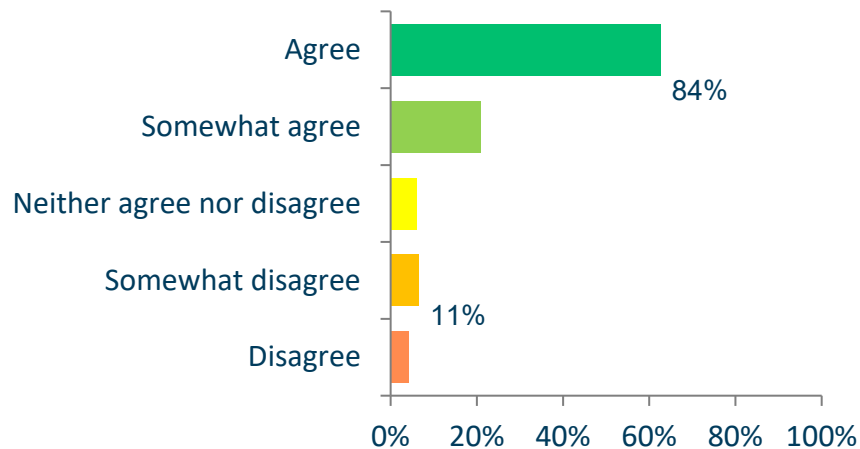
The Grove

General Survey Results

I feel connected to **the Hill** design



I feel connected to **the Grove** design



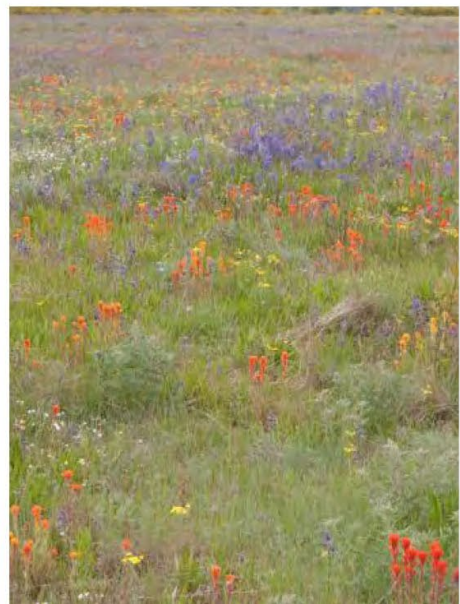
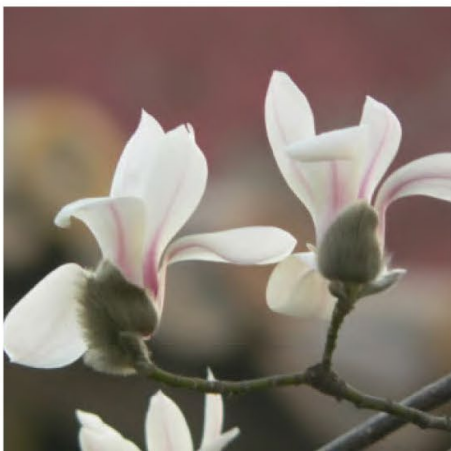
Memorial Design: Experience Needs

Learning – Recognition of past harms. Narrating challenging histories directly and honestly validates the experiences of marginalized communities and can spread empathy and compassion.

Reflection – Acknowledging one's own role in the history holds space for grief, joy, anger, gratitude.

Participation and Healing – Opportunities to engage with the site will provide a platform for healing.





SE 20th Ave

SE Morrison

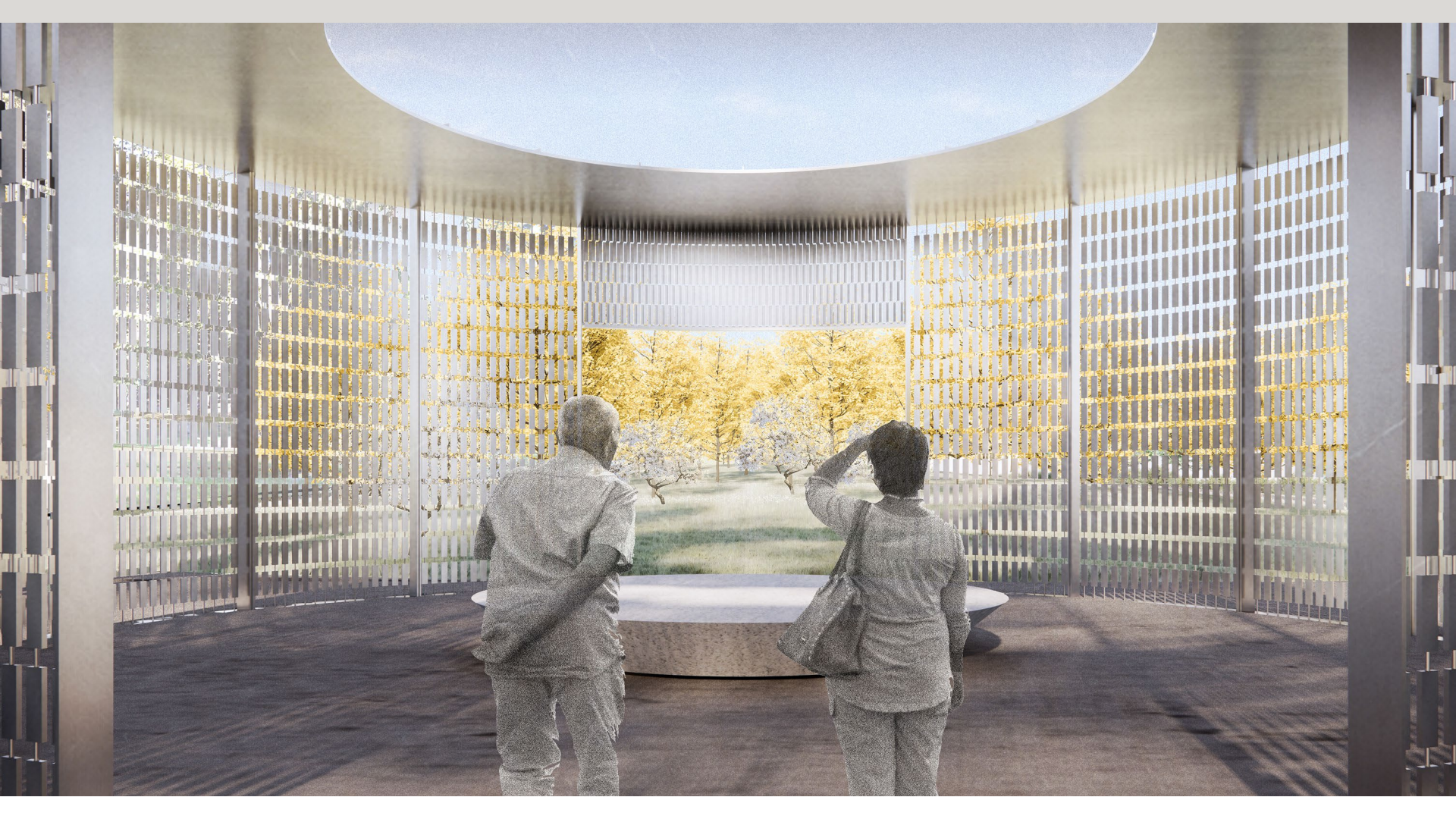
- ① Entrance Monument Sign
- ② Memorial Pavilion
- ③ New Altar
- ④ Interpretive Wall and Entrance gates
- ⑤ Native Savanna
- ⑥ Ginkgo and Magnolia Grove
- ⑦ Traditional Shrine
- ⑧ Historic Altar
- ⑨ Culturally Significant Plantings

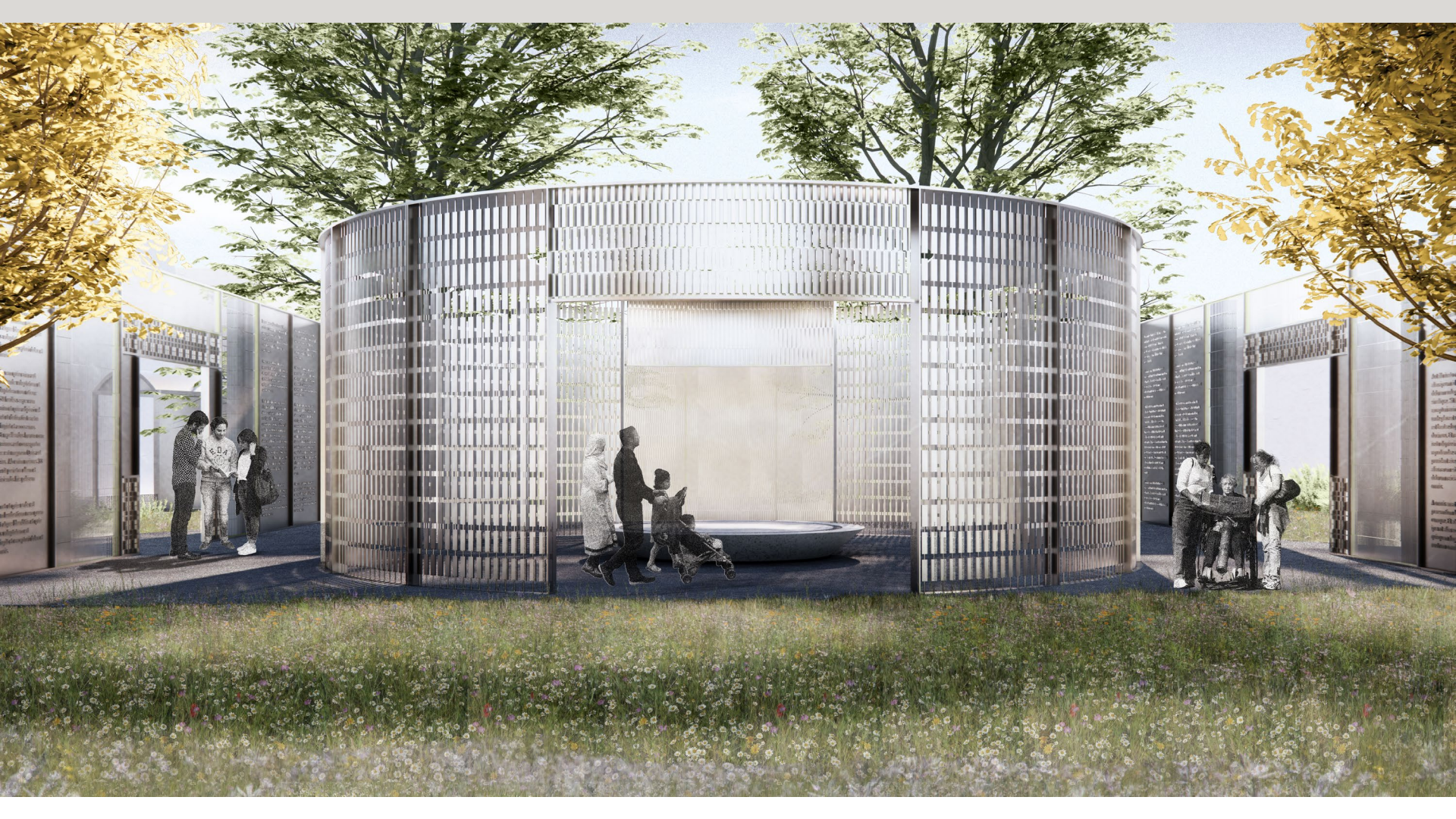




長懷園

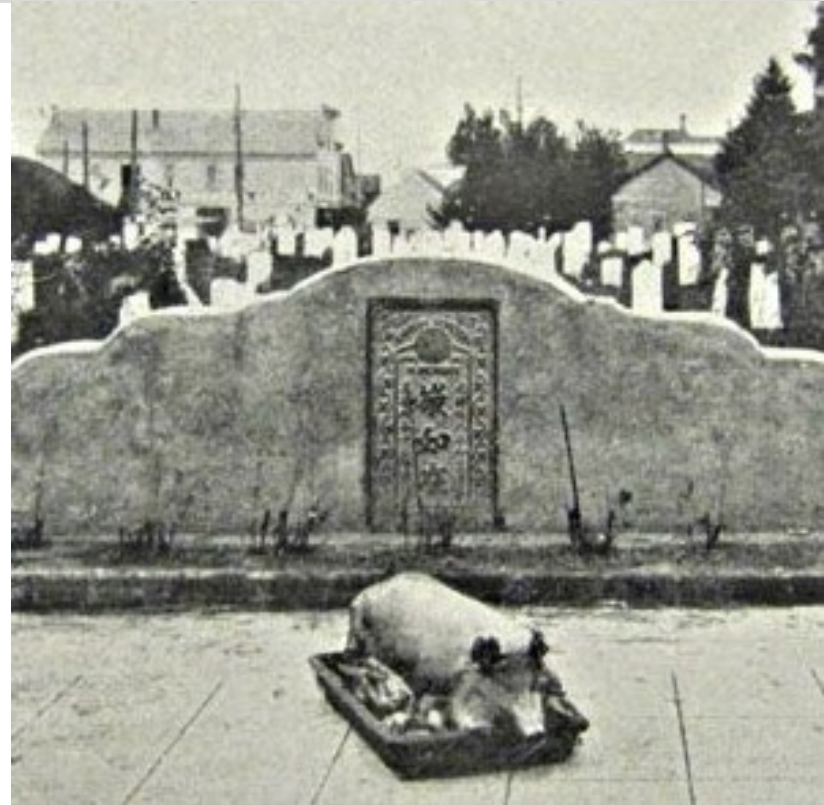
長懷園



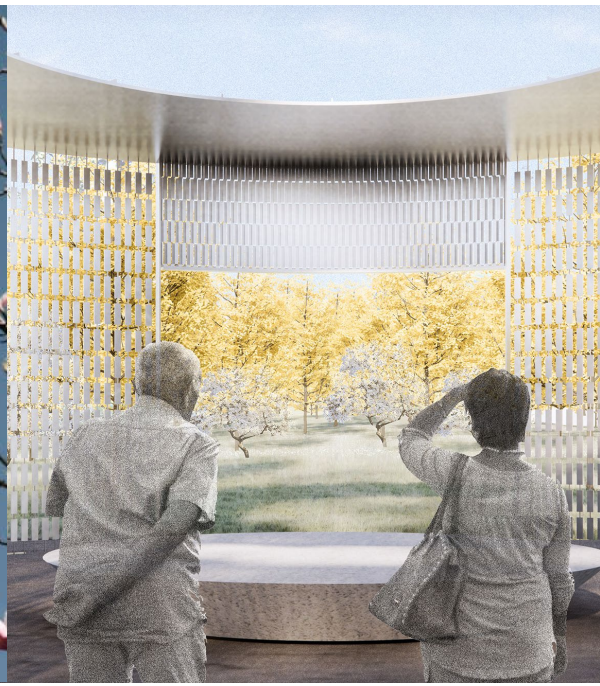


Next steps | 後續工作

- Design engineering, land use approval and permitting
- Out for construction bids winter 2025/26
- Opening celebration late 2026



Thank you





Metro

Arts and events
Garbage and recycling
Land and transportation
Oregon Zoo
Parks and nature

oregonmetro.gov